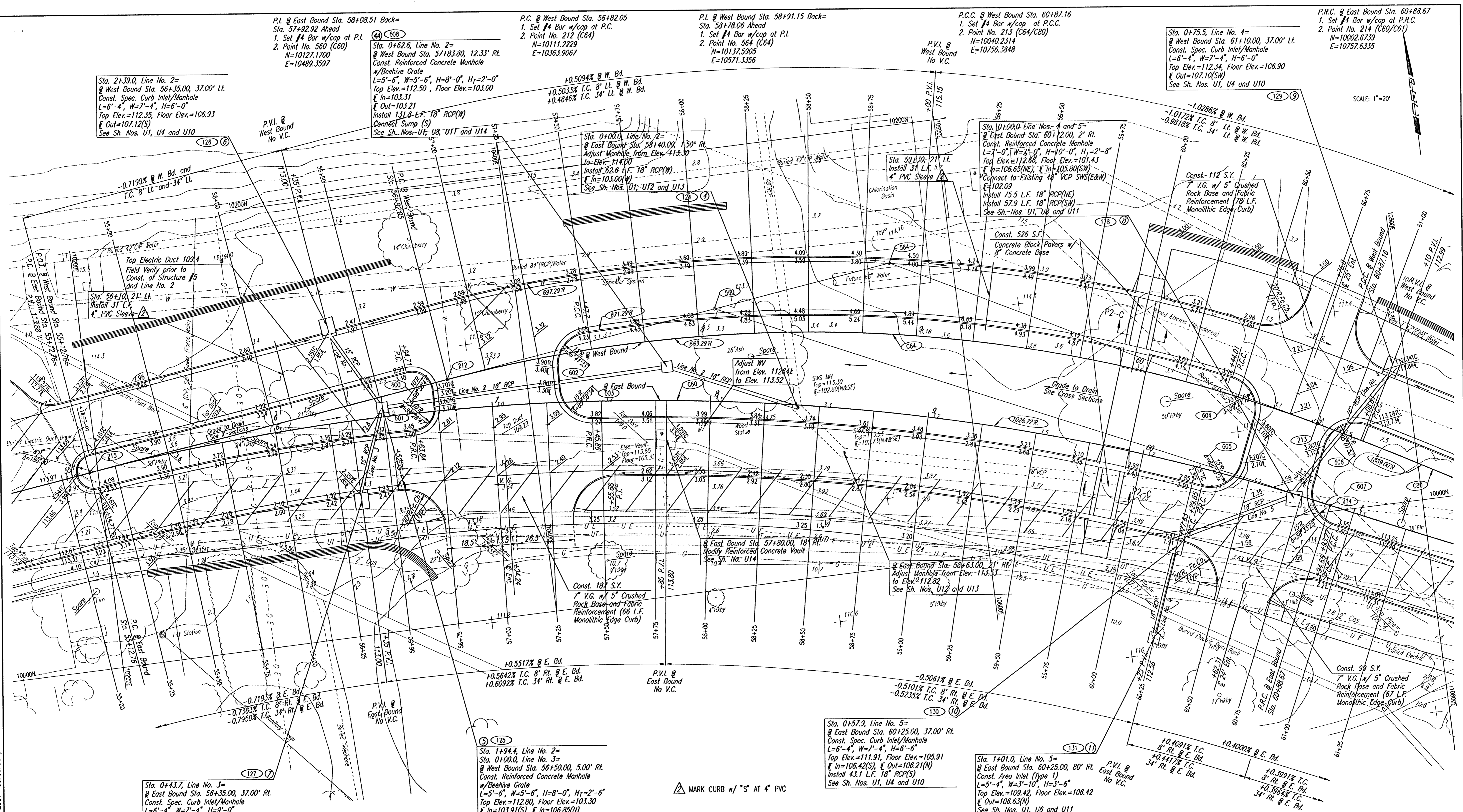


PLAN	DATE
SURVEYED	
NOTED	
FLIPPED	
CHECKED	
BY	
NO.	
BY	
NO.	
BY	
NO.	

DSNR, DEP. OPER. DEP. SCALE: 1"=20.00'
 C: 1999/09/27 10:00 AM REVISED 06-01-2001 03:06:33 pm



Sta. 2+39.0, Line No. 2=
 @ West Bound Sta. 56+35.00, 37.00' Lt.
 Const. Spec. Curb Inlet/Manhole
 L=6'-4", W=7'-4", H=6'-0"
 Top Elev.=112.35, Floor Elev.=106.93
 Out=107.12(S)
 See Sh. Nos. U1, U4 and U10

P.I. @ East Bound Sta. 58+08.51 Back=
 Sta. 57+92.92 Ahead
 1. Set #4 Bar w/cop at P.I.
 2. Point No. 560 (C60)
 N=10127.1700
 E=10489.3597

Sta. 0+62.6, Line No. 2=
 @ West Bound Sta. 57+83.80, 12.33' Rt.
 Const. Reinforced Concrete Manhole
 w/Beehive Grate
 L=5'-6", W=5'-6", H=8'-0", H₁=2'-0"
 Top Elev.=112.50, Floor Elev.=103.00
 In=103.31
 Out=103.21
 Install 131.8 L.F. 18" RCP(W)
 Connect Sump (S)
 See Sh. Nos. U1, U8, U11 and U14

P.C. @ West Bound Sta. 56+82.05
 1. Set #4 Bar w/cop at P.C.
 2. Point No. 212 (C64)
 N=10111.2229
 E=10363.9067

P.I. @ West Bound Sta. 58+91.15 Back=
 Sta. 58+78.06 Ahead
 1. Set #4 Bar w/cop at P.I.
 2. Point No. 564 (C64)
 N=10137.5905
 E=10571.3356

P.C.C. @ West Bound Sta. 60+87.16
 1. Set #4 Bar w/cop at P.C.C.
 2. Point No. 213 (C64/C80)
 N=10040.2314
 E=10756.3848

P.R.C. @ East Bound Sta. 60+88.67
 1. Set #4 Bar w/cop at P.R.C.
 2. Point No. 214 (C60/C81)
 N=10002.6739
 E=10757.6335

Sta. 0+75.5, Line No. 4=
 @ West Bound Sta. 61+10.00, 37.00' Lt.
 Const. Spec. Curb Inlet/Manhole
 L=6'-4", W=7'-4", H=6'-0"
 Top Elev.=112.34, Floor Elev.=106.90
 Out=107.10(SW)
 See Sh. Nos. U1, U4 and U10

SCALE: 1"=20'

Sta. 0+43.7, Line No. 3=
 @ East Bound Sta. 56+35.00, 37.00' Rt.
 Const. Spec. Curb Inlet/Manhole
 L=6'-4", W=7'-4", H=9'-0"
 Top Elev.=112.35, Floor Elev.=103.93
 In=104.12(N)
 Out=104.12(N)
 See Sh. Nos. U1, U4 and U10

B.M. #2 - Chiseled # of Top of SW corner of concrete
 slab to Water Vault.
 @ Sta. 55+20, 83' Lt.
 Elev.=115.88

+0.5517% @ E. Bd.
 +0.5642% T.C. 8' Rt. @ E. Bd.
 +0.6092% T.C. 34' Rt. @ E. Bd.

Sta. 1+94.4, Line No. 2=
 Sta. 0+00.0, Line No. 3=
 @ West Bound Sta. 56+50.00, 5.00' Rt.
 Const. Reinforced Concrete Manhole
 w/Beehive Grate
 L=5'-6", W=5'-6", H=8'-0", H₁=2'-6"
 Top Elev.=112.80, Floor Elev.=103.30
 In=103.91(S), In=106.85(N)
 Out=103.76(E)
 Install 44.6 L.F. 15" RCP(N)
 Install 44.7 L.F. 15" RCP(S)
 See Sh. Nos. U1, U8 and U11

MARK CURB w/ 'S' AT 4" PVC

Sta. 0+57.9, Line No. 5=
 @ East Bound Sta. 60+25.00, 37.00' Rt.
 Const. Spec. Curb Inlet/Manhole
 L=6'-4", W=7'-4", H=6'-6"
 Top Elev.=111.91, Floor Elev.=105.91
 In=106.42(S), Out=106.21(N)
 Install 43.1 L.F. 18" RCP(S)
 See Sh. Nos. U1, U4 and U10

Sta. 1+01.0, Line No. 5=
 @ East Bound Sta. 60+25.00, 80' Rt.
 Const. Area Inlet (Type 1)
 L=5'-4", W=3'-10", H=3'-6"
 Top Elev.=109.42, Floor Elev.=106.42
 Out=106.63(N)
 See Sh. Nos. U1, U6 and U11

SEE SH. NO. P12 FOR COORDINATE DATA
 SEE SH. NO. P11 FOR CURVE TABLES.

REV.	DATE	DESCRIPTION

HELLMUTH, OBATA & KASSEBAUM, INC.
 DALLAS, TEXAS
 PROFESSIONAL ENGINEERING
 CONSULTANTS, P.A.
 WICHITA, KANSAS
 BRAD J. GOLDBERG
 DALLAS, TEXAS

MUSEUM DISTRICT ROADWAY AND
 PEDESTRIAN IMPROVEMENTS
 WICHITA, KANSAS

SIM PARK DRIVE
 STA. 55+00.00 TO STA. 61+10.00

PROJECT NO.	SHEET
	P-6