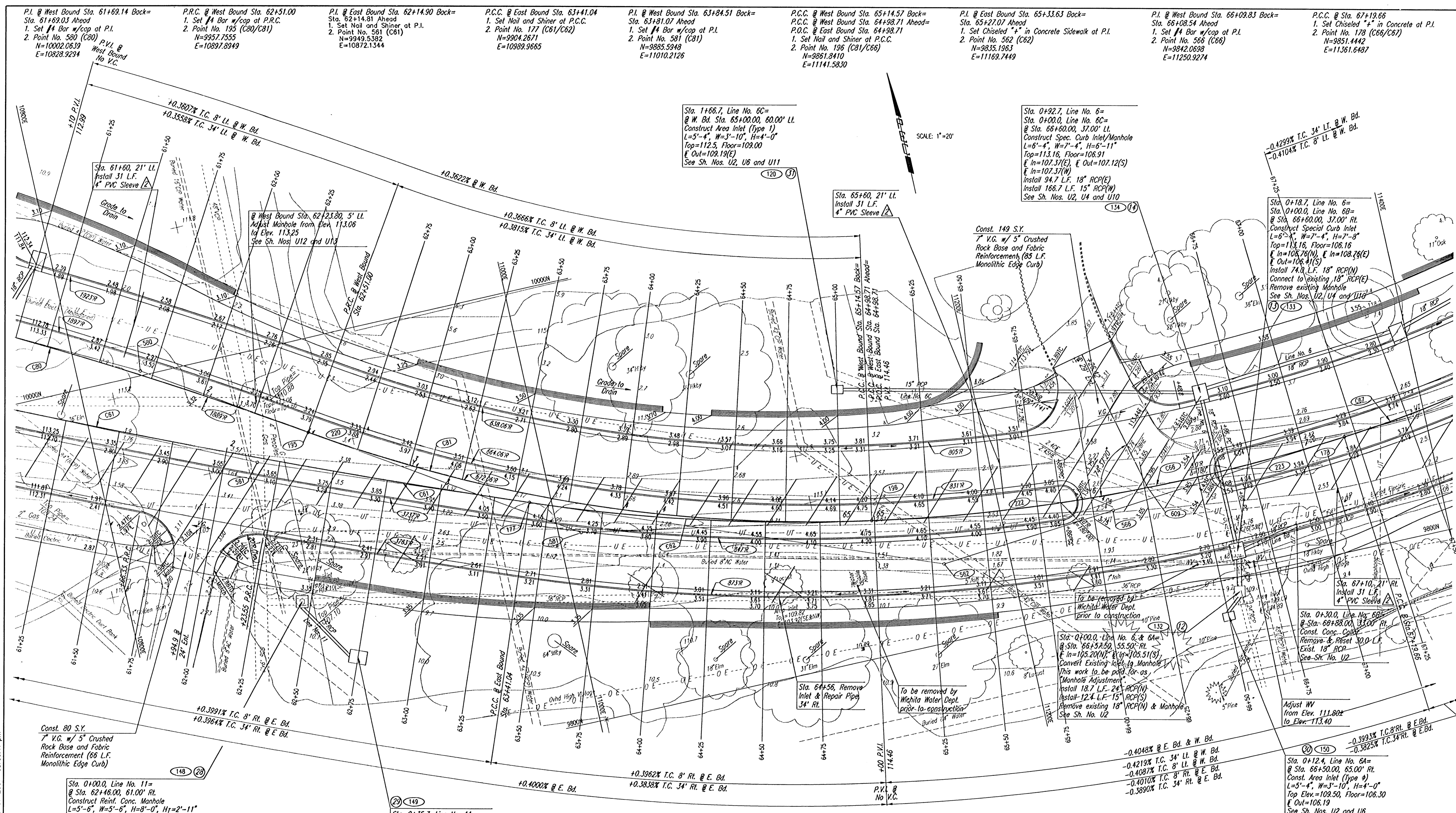


PLAN	SURVEYED	BY	DATE
NOTE BOOK PLOTTED	ALIGNMENT CHECKED		
NO.	RT. OF WAY CHECKED		

DSNR: DEP. OPER. DEP. SCALE: 1"=20.00  
 Q:\1999\99773\000\WDRIVE3\_06-01-2001\_03:06:11 pm



<p>Const. 80 S.Y.          7" V.C. w/ 5" Crushed Rock Base and Fabric Reinforcement (66 L.F. Monolithic Edge Curb)</p> <p>Sta. 0+00.0, Line No. 11=          @ Sta. 62+46.00, 61.00' Rt.          Construct Reinf. Conc. Manhole          L=5'-6", W=5'-6", H=8'-0", H<sub>1</sub>=2'-11"          Top Elev.=113.2, Floor=102.28          E In=105.12 (SE)          E=103.10 (E&amp;H)          Connect to Exist. 36" RCP          Remove Exist. Area Inlet          Install 35.7 L.F. 15" RCP (SE)          See Sh. Nos. U3, U8 and U11</p> <p>Sta. 0+35.7, Line No. 11=          @ Sta. 62+75.00, 82.00' Rt.          Construct Area Inlet (Type 1)          L=5'-4", W=3'-10", H=4'-0"          Top Elev.=109.50, Floor=106.00          E Out=106.19          See Sh. Nos. U3, U6 and U11</p> <p>B.M. #3 - Railroad Spike in North Face of H.L.P.          @ East Bound Sta. 62+70, 125' Rt.          Elev.=112.745</p>	<p>MARK CURB w/ "S" at 4" PVC</p> <p>SEE SH. NO. P12 FOR COORDINATE DATA.          SEE SH. NO. P11 FOR CURVE TABLES.</p>	<p>HELLMUTH, OBATA &amp; KASSEBAUM, INC.          DALLAS, TEXAS</p> <p>PROFESSIONAL ENGINEERING          CONSULTANTS, P.A.          WICHITA, KANSAS</p> <p>BRAD J. GOLDBERG          DALLAS, TEXAS</p>	<p>MUSEUM DISTRICT ROADWAY AND          PEDESTRIAN IMPROVEMENTS          WICHITA, KANSAS</p> <p style="text-align: center;"><b>SIM PARK DRIVE</b>          STA. 61+10.00 TO STA. 67+50.00</p>
REV.    DATE    DESCRIPTION	PROJECT NO. _____ SHEET P-7		