

P.I. @ Sta. 68+46.91 Back= Sta. 68+42.98 Ahead  
 1. Set #4 Bar w/cap at P.I.  
 2. Point No. 567 (C67)  
 N=9862.1799  
 E=11488.4480

P.I. @ Sta. 69+70.23  
 1. Set Nail and Shiner at P.I.  
 2. Point No. 179 (C67)  
 N=9924.8151  
 E=11599.2187

P.C. @ East Bound Sta. 69+83.23= P.O.T. @ West Bound Sta. 69+83.23 Back=  
 P.O.T. @ West Bound Sta. 69+99.09 Ahead  
 1. Set Nail and Shiner at P.C.  
 2. Point No. 89 (C55)  
 N=9931.2139  
 E=11610.5349

P.C. @ West Bound Sta. 70+46.11  
 1. Set Nail and Shiner at P.C.  
 2. Point No. 198 (C68)  
 N=9954.3562  
 E=11651.4622

P.I. @ East Bound Sta. 71+50.16 Back= Sta. 71+28.91 Ahead  
 1. Set #4 Bar w/cap at P.I.  
 2. Point No. 555 (C55)  
 N=10013.3779  
 E=11755.8423

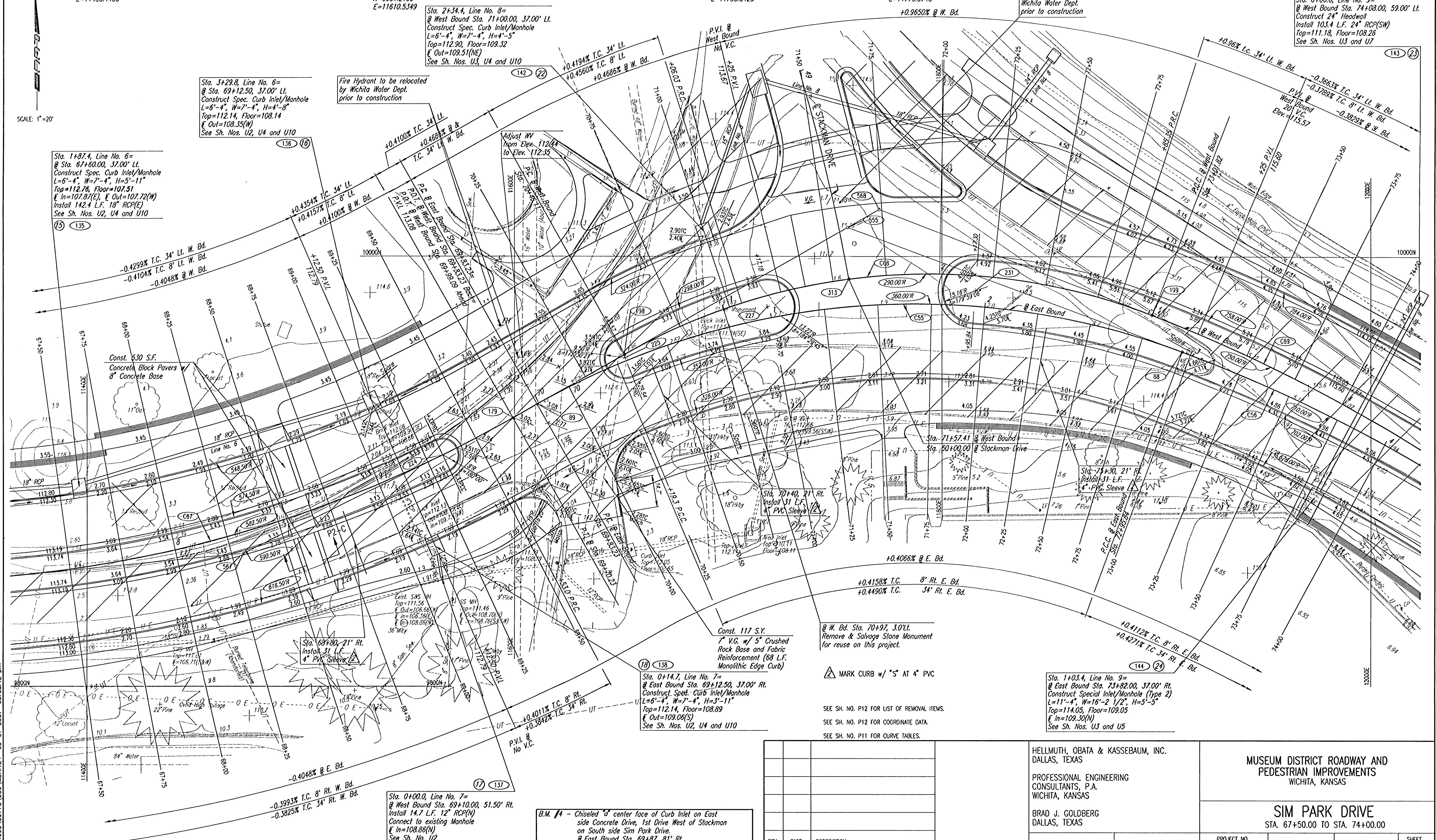
P.I. @ West Bound Sta. 71+82.95 Back= Sta. 71+64.98 Ahead  
 1. Set #4 Bar w/cap at P.I.  
 2. Point No. 568 (C68)  
 N=10021.7084  
 E=11770.5748

P.C.C. @ West Bound Sta. 73+01.82  
 1. Set #4 Bar w/cap at P.C.C.  
 2. Point No. 199 (C68/C69)  
 N=9972.5939  
 E=11898.2927

P.C.C. @ East Bound Sta. 72+95.84  
 1. Set #4 Bar w/cap at P.C.C.  
 2. Point No. 88 (C55/C56)  
 N=9955.5534  
 E=11912.4357

SCALE: 1"=20'

PLAN	DATE
SURVEYED	BY
NOTE BOOK	NO.
FLIPPED	NO.
ALIGNED	NO.
CHECKED	NO.
RET. BY	NO.
DATE	



DSNR: DEP. OPER. DEP. SCALE: 1"=20.00  
 05-05-2001 03-05-2001

REV.	DATE	DESCRIPTION

HELLMUTH, OBATA & KASSEBAUM, INC.  
 DALLAS, TEXAS  
 PROFESSIONAL ENGINEERING  
 CONSULTANTS, P.A.  
 WICHITA, KANSAS  
 BRAD J. GOLDBERG  
 DALLAS, TEXAS

MUSEUM DISTRICT ROADWAY AND  
 PEDESTRIAN IMPROVEMENTS  
 WICHITA, KANSAS  
**SIM PARK DRIVE**  
 STA. 67+50.00 TO STA. 74+00.00  
 PROJECT NO. SHEET P-8