

P.I. @ West Bound Sta. 75+13.96 Back=  
Sta. 75+03.16 Ahead  
1. Set #4 Bar w/cap at P.I.  
2. Point No. 569 (C69)  
N=9898.4505  
E=12096.2970

P.I. @ East Bound Sta. 75+01.81 Back=  
Sta. 74+90.80 Ahead  
1. Set Chiseled "d" in Concrete Sidewalk at P.I.  
2. Point No. 556 (C56)  
N=9884.2053  
E=12105.6518

P.T. @ West Bound Sta. 77+15.30  
1. Set Nail and Shiner at P.T.  
2. Point No. 200 (C69)  
N=9727.8738  
E=12225.0813

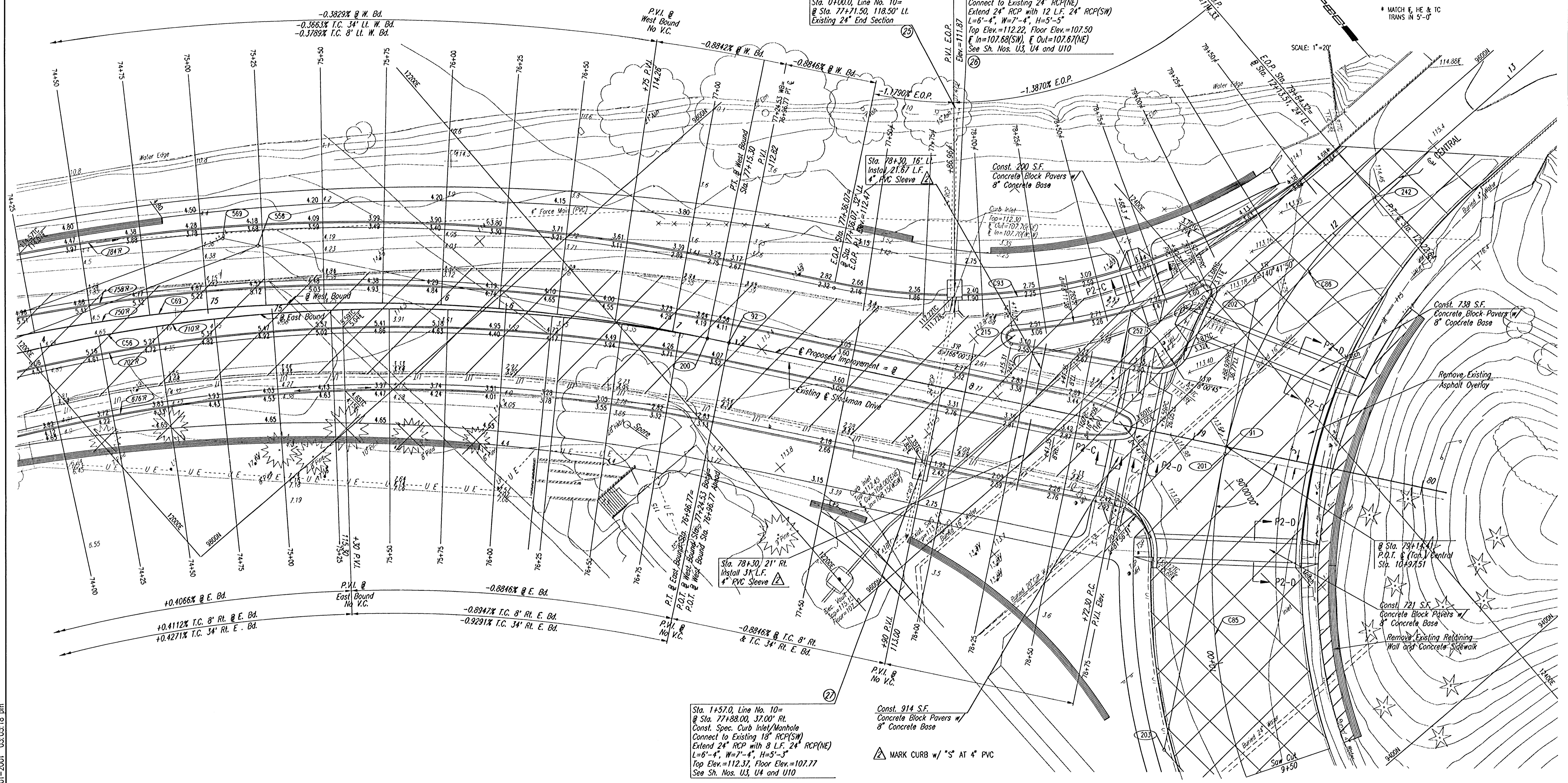
P.T. @ East Bound Sta. 76+96.77=  
P.O.T. @ West Bound Sta. 77+24.53 Back=  
P.O.T. @ West Bound Sta. 76+96.77 Ahead  
1. Set Nail and Shiner at P.T.  
2. Point No. 92 (C56)  
N=9720.5330  
E=12230.6893

P.O.T. @ Sta. 79+14.41=  
P.O.T. @ (Tan.) Central Sta. 10+97.51  
1. Set Nail and Shiner at P.O.T.  
2. Point No. 91  
N=9547.5812  
E=12362.8159

P.C.C. @ Central Sta. 10+94.51  
1. Set Nail and Shiner at P.C.C.  
2. Point No. 201  
N=9545.7600  
E=12360.4320  
3. Back of Curb Central 38.5' S  
4. West Back of Curb Stockman  
Extended South 24.6' W  
\* MATCH E, NE & TC  
TRANS IN 5'-0"

PLAN	SURVEYED	DATE
	PLOTTED	
	ALIGNED	
	CHECKED	
	BY	
	RT. OF WAY	
	CHECKED	

DSNR: BRJ OPER. DEP. SCALE: 1"=20.00  
G:\1999\99773\000\MDRIVES 06-01-2001 03:05:18 pm



B.M. #5 - Chiseled "d" center East side Top  
Concrete Electric Vault.  
@ Sta. 77+65, 86' Rt.  
Elev.=115.00

Δ EDGE OF PAVEMENT STATION (LT.)  
SEE SH. NO. P12 FOR COORDINATE DATA.  
SEE SH. NO. P11 FOR CURVE TABLES.

REV.	DATE	DESCRIPTION

HELLMUTH, OBATA & KASSEBAUM, INC.  
DALLAS, TEXAS  
PROFESSIONAL ENGINEERING  
CONSULTANTS, P.A.  
WICHITA, KANSAS  
BRAD J. GOLDBERG  
DALLAS, TEXAS

MUSEUM DISTRICT ROADWAY AND  
PEDESTRIAN IMPROVEMENTS  
WICHITA, KANSAS

SIM PARK DRIVE  
STA. 74+00.00 TO STA. 80+00.00

PROJECT NO.		SHEET	P-9
-------------	--	-------	-----