

P.C. @ Stockman Sta. 47+66.29
 1. Set Nail and Shiner at P.C.
 2. Point No. 312
 N=10211.4549
 E=11685.4839

P.I. @ Stockman Sta. 48+83.80 Back=
 Sta. 48+82.48 Ahead
 1. Set Nail and Shiner at P.I.
 2. Point No. 500
 N=10105.0751
 E=11735.4229

Sta. 0+00.0, Line No. 8=
 @ E.O.P. Sta. 49+75.33, 55' Lt.
 Construct 24" Headwall
 Top Elev.=111.18, F=108.26
 Install 50.0 L.F. 24" RCP(SW)
 See Sh. Nos. U3 and U7

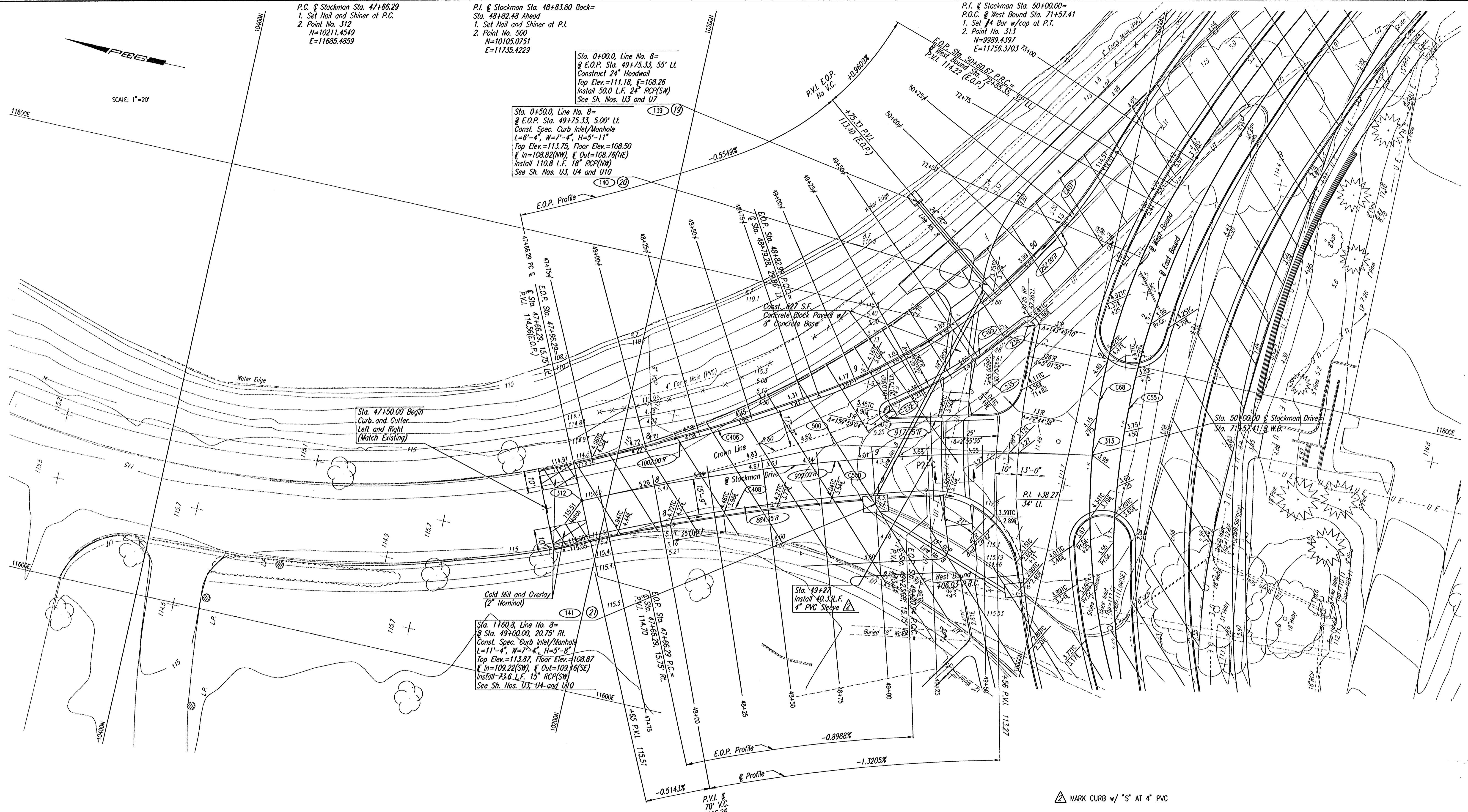
Sta. 0+50.0, Line No. 8=
 @ E.O.P. Sta. 49+75.33, 5.00' Lt.
 Const. Spec. Curb Inlet/Manhole
 L=6'-4", W=7'-4", H=5'-11"
 Top Elev.=113.75, Floor Elev.=108.50
 F In=108.82(NW), F Out=108.78(NE)
 Install 110.8 L.F. 18" RCP(NW)
 See Sh. Nos. U3, U4 and U10

P.T. @ Stockman Sta. 50+00.00=
 P.O.C. @ West Bound Sta. 71+57.41
 1. Set #4 Bar w/loop at P.T.
 2. Point No. 313
 N=9289.4397
 E=11756.3703

SCALE: 1"=20'

PLAN	SURVEYED	BY	DATE
NOTE BOOK	PLOTTED		
	ALIGNMENT CHECKED		
	RT. OF WAY CHECKED		

DSNR: DEP. OPER. DEP. SCALE: 1"=20.00
 C: 1999/09/23 10:00 MORNING 06-01-2001 03:04:52 pm



Cold Mill and Overlay
 (2" Nominal)

Sta. 1+60.8, Line No. 8=
 @ Sta. 49+00.00, 20.75' Rt.
 Const. Spec. Curb Inlet/Manhole
 L=11'-4", W=7'-4", H=5'-8"
 Top Elev.=113.87, Floor Elev.=108.87
 F In=109.22(SW), F Out=109.16(SE)
 Install 73.6 L.F. 15" RCP(SW)
 See Sh. Nos. U3, U4 and U10

Sta. 49+27
 Install 40.3 L.F.
 4" PVC Sleeve

B.M. #4 - Chiseled "d" center face of Curb Inlet
 on East side Concrete Drive, 1st Drive
 West of Stockman on South side Sim
 Park Drive.
 @ East Bound Sta. 69+87, 81' Rt.
 Elev.=112.03

MARK CURB w/ "S" AT 4" PVC

REV.	DATE	DESCRIPTION

HELLMUTH, OBATA & KASSEBAUM, INC.
 DALLAS, TEXAS
 PROFESSIONAL ENGINEERING
 CONSULTANTS, P.A.
 WICHITA, KANSAS
 BRAD J. GOLDBERG
 DALLAS, TEXAS

MUSEUM DISTRICT ROADWAY AND
 PEDESTRIAN IMPROVEMENTS
 WICHITA, KANSAS
STACKMAN DRIVE
 STA. 47+66.29 TO STA. 50+00.00
 PROJECT NO. SHEET P-10