

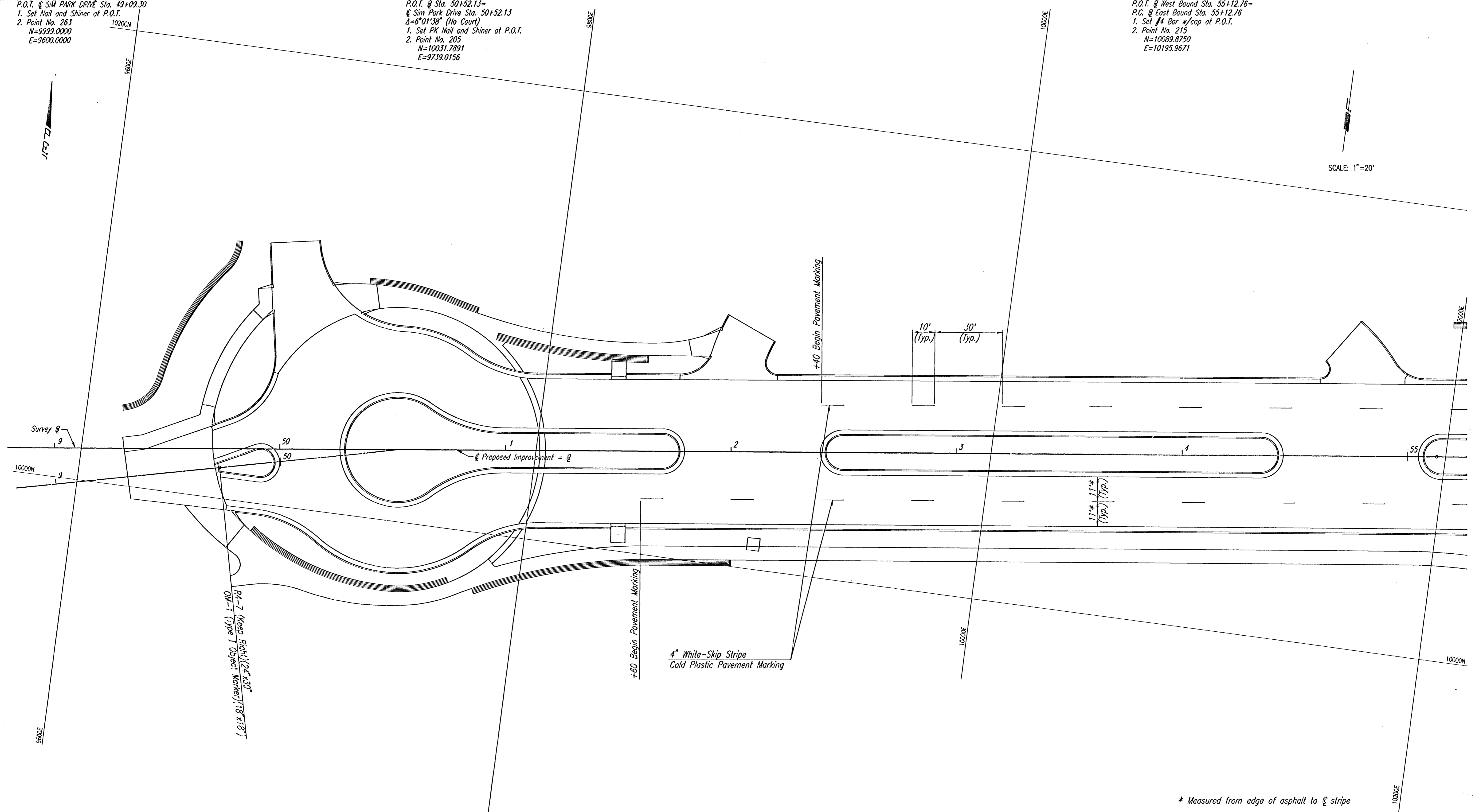
P.O.T. @ SIM PARK DRIVE Sta. 49+09.30
 1. Set Nail and Shiner at P.O.T.
 2. Point No. 263
 N=9999.0000
 E=9600.0000

P.O.T. @ Sta. 50+52.13=
 @ Sim Park Drive Sta. 50+52.13
 Δ=6°01'38" (No Court)
 1. Set PK Nail and Shiner at P.O.T.
 2. Point No. 205
 N=10031.7891
 E=9739.0156

P.O.T. @ West Bound Sta. 55+12.76=
 P.C. @ East Bound Sta. 55+12.76
 1. Set #4 Bar w/cop at P.O.T.
 2. Point No. 215
 N=10089.8750
 E=10195.9671

SCALE: 1"=20'

PLAN	SURVEYED	BY	DATE
NOTE BOOK	PLOTTED		
	ALIGNMENT CHECKED		
	RT. OF WAY CHECKED		



DSNR: DEP. OPER. DEP. SCALE: 1"=20.00
 Q:\1999\99773\000\MARKING50-55_06-01-2001_03:04:27.pm

B.M. #1 - Chiseled "d" center concrete sidewalk
 just North of Electric Box.
 @ Sta. 48+26, 70' Rt.
 Elev.=114.77

Datum B.M. - Found Brass Rod in concrete post at
 NW corner Bullum and Franklin.
 City of Wichita Elev.=115.61

REV.	DATE	DESCRIPTION

* Measured from edge of asphalt to @ stripe

**MUSEUM DISTRICT ROADWAY AND
 PEDESTRIAN IMPROVEMENTS**
 WICHITA, KANSAS

MARKING AND SIGNING PLAN
 STA. 50+00.00 TO STA. 55+00.00

PROJECT NO.			
SHEET	MS-1		