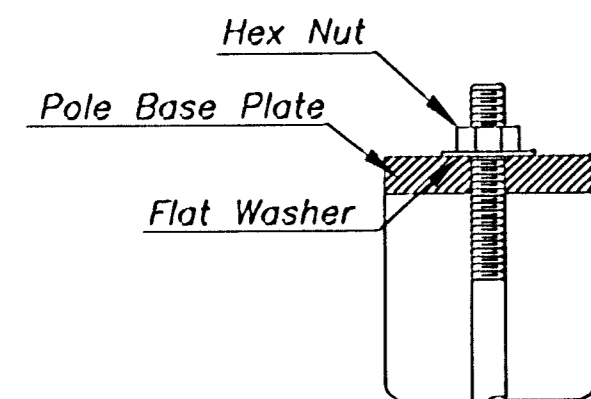
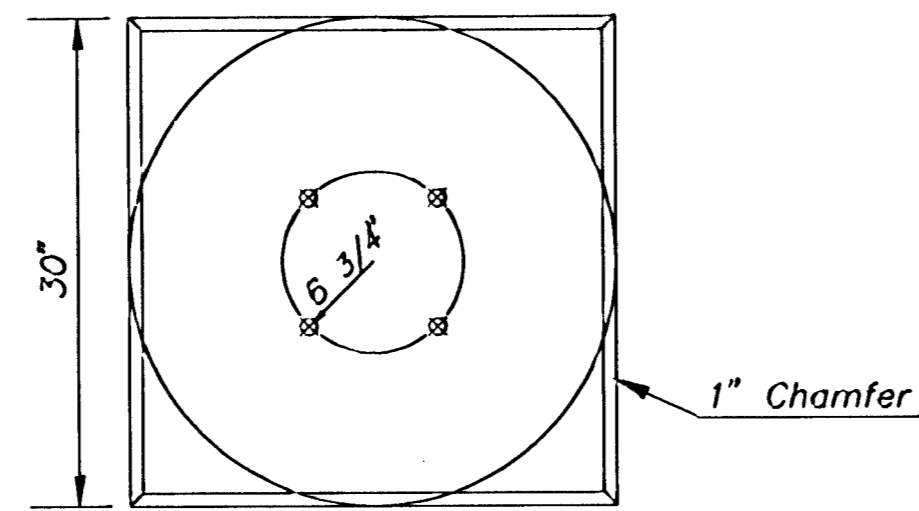


Use Keystone "No-Weld Number 1 Anti-Seize Compound" on all bolts & nuts.

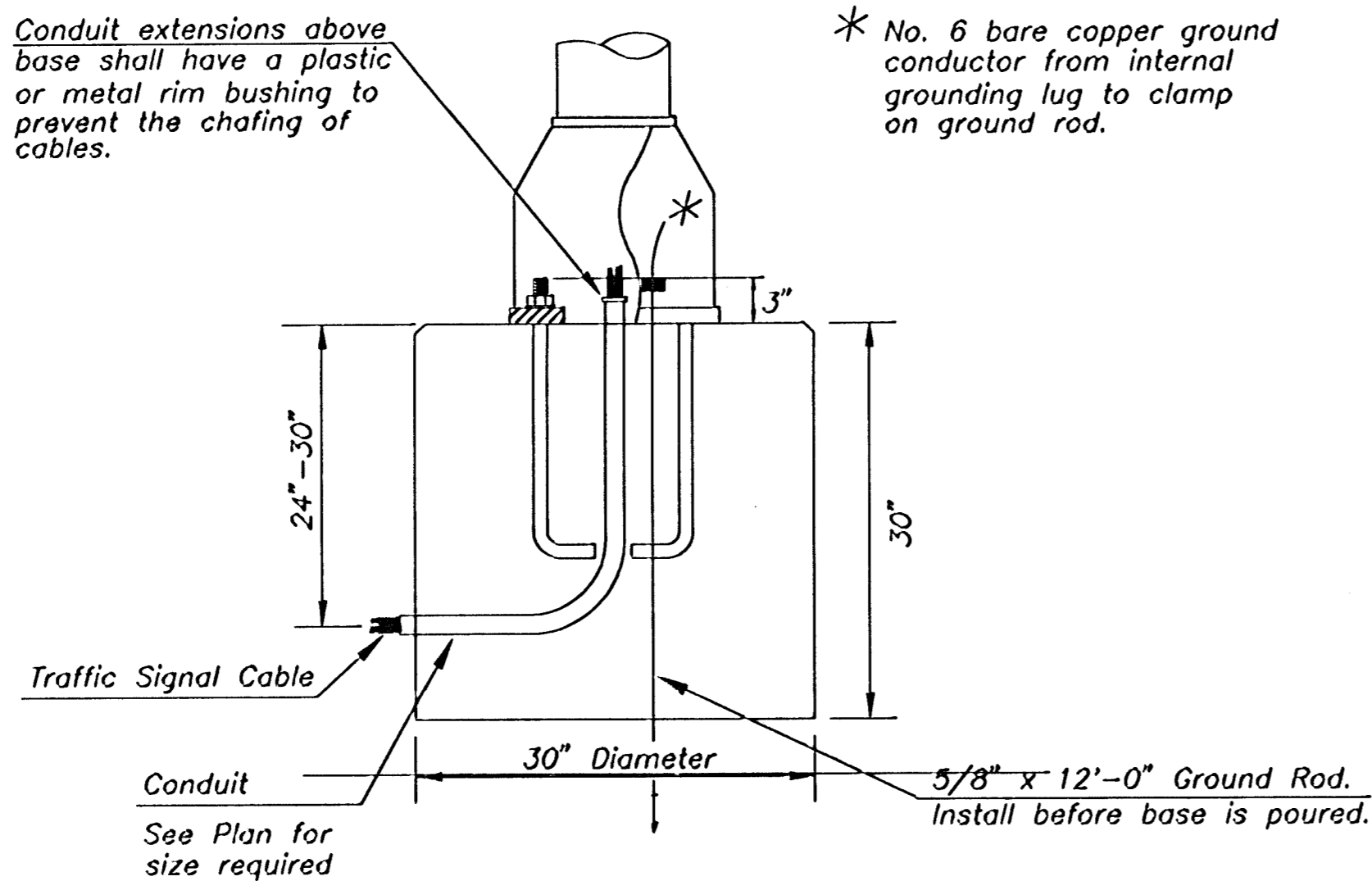


ANCHOR BOLT DETAIL

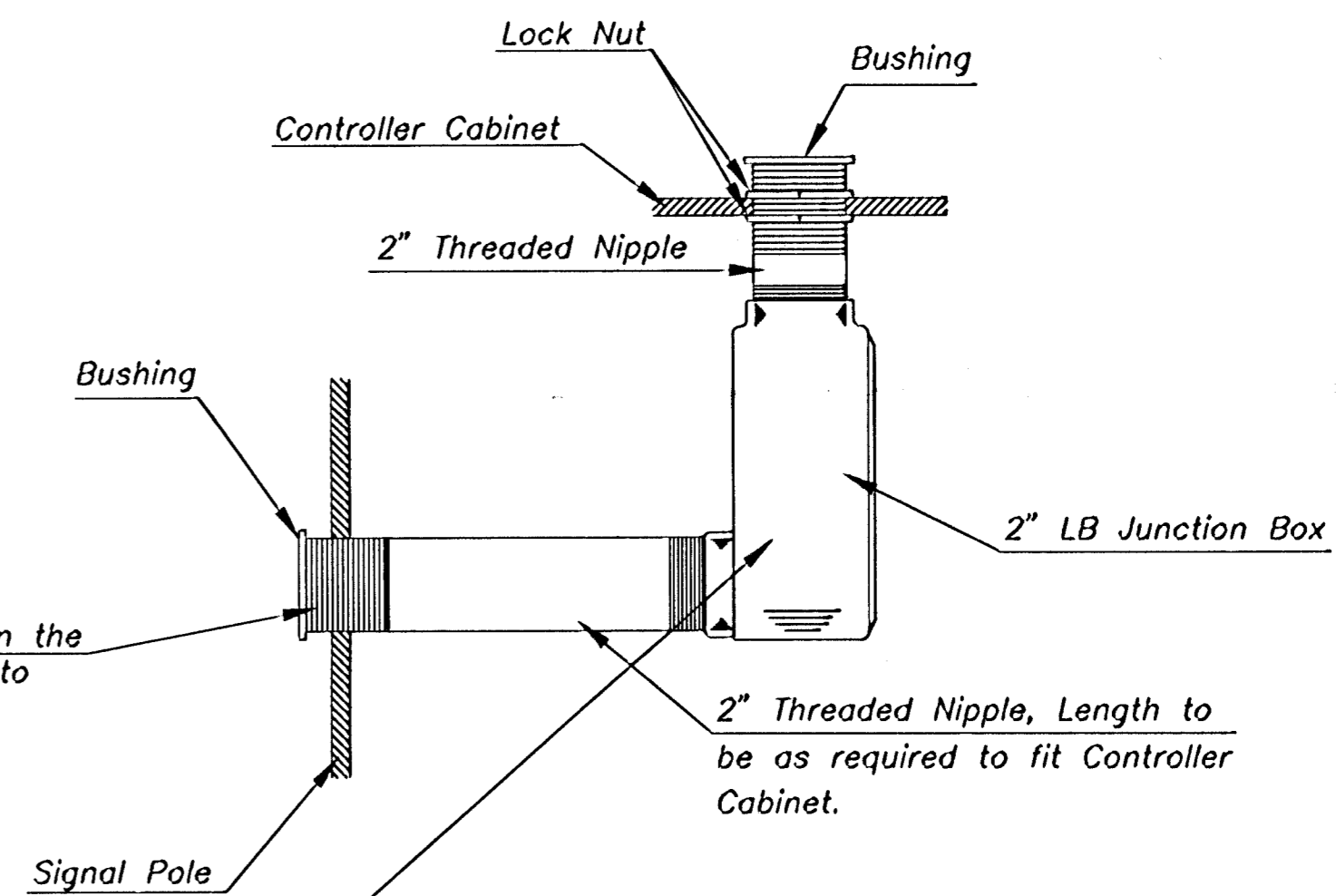


Conduit extensions above base shall have a plastic or metal rim bushing to prevent the chafing of cables.

\* No. 6 bare copper ground conductor from internal grounding lug to clamp on ground rod.



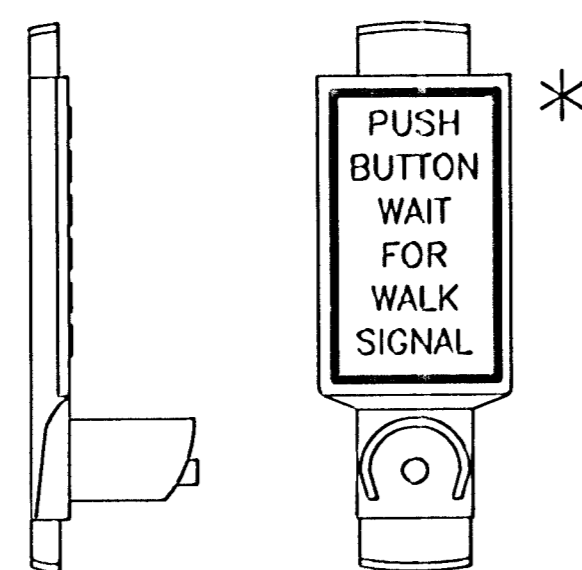
CONCRETE BASE DETAIL



A hole shall be drilled in the signal pole & threaded to receive the 2" nipple.

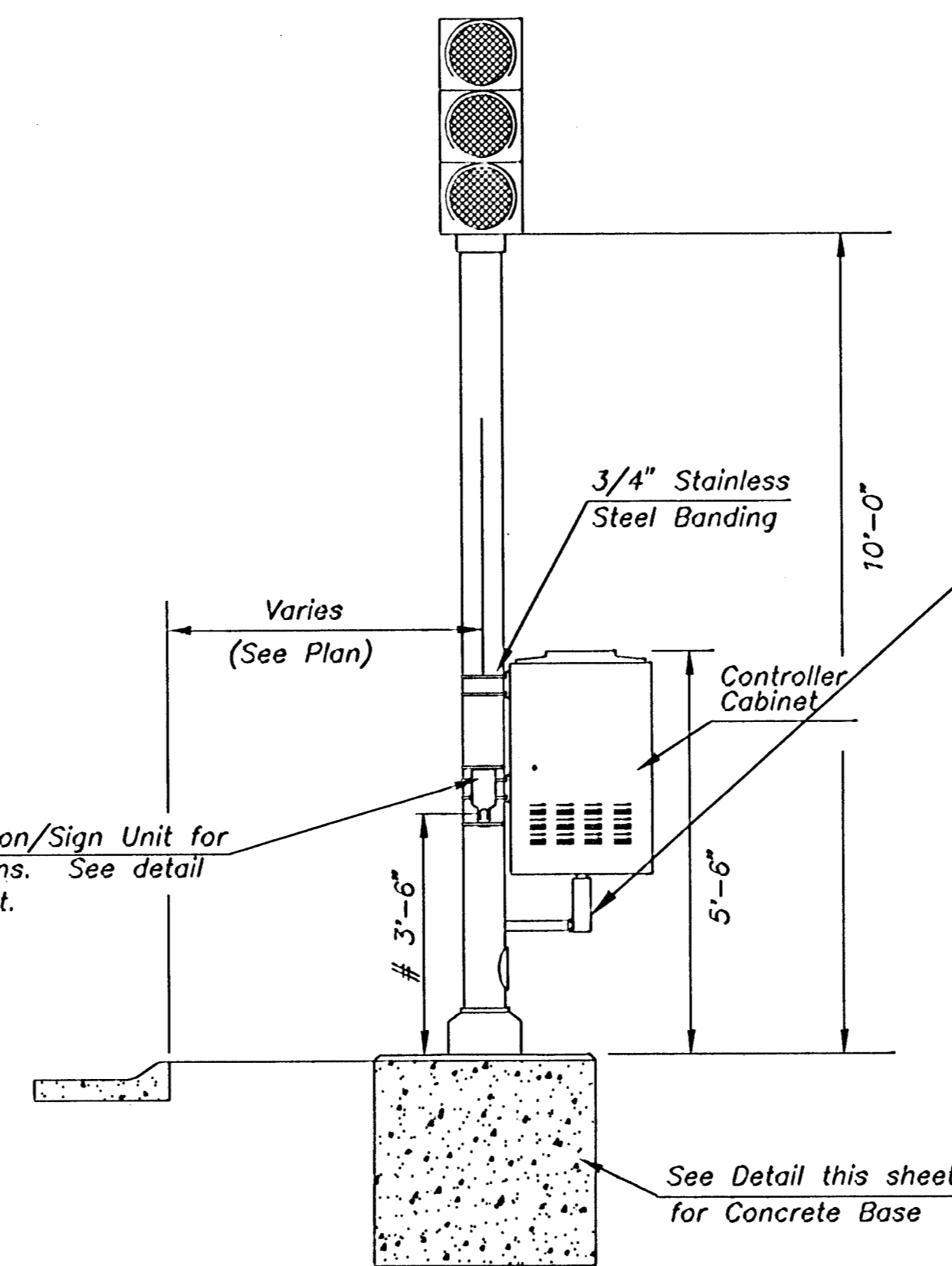
2" Threaded Nipple, Length to be as required to fit Controller Cabinet.

\*NOTE: MESSAGE TO BE CAST WITH HOUSING (ONE PIECE)



PEDESTRIAN PUSHBUTTON/SIGN UNIT DETAIL

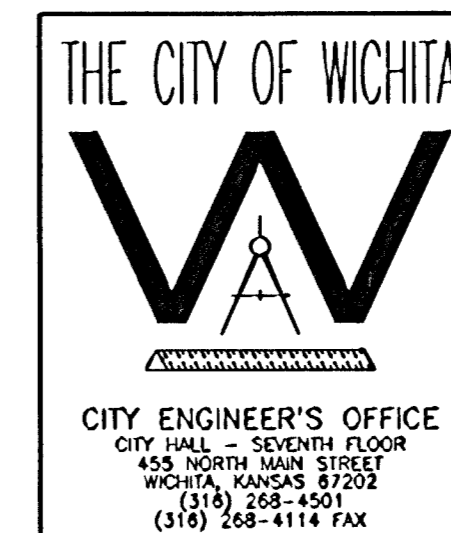
INSTALL PEDESTRIAN PUSHBUTTON UNDERNEATH CORRESPONDING PEDESTRIAN SIGNAL HEAD ON SIDE OF POLE NEAREST CROSSWALK. UNIT SHALL BE FIRMLY ATTACHED TO THE SIDE OF POLE WITH 3/4" STEEL BANDS. SHARP ENDS SHALL BE FOLDED UNDER TO PREVENT INJURY TO PEDESTRIANS.



TRAFFIC SIGNAL PEDESTAL

# From Sidewalk Finish Grade to Center of Pushbutton.

DSNR: RER OPER: DEP SCALE: 1=1.00  
 C: 1999 \9773\PEDESTAL 06-04-2001 08:26:58 am



|   |                  |             |
|---|------------------|-------------|
| PROJECT DESCRIPTION                     |                  |             |
| TRAFFIC SIGNAL PEDESTAL & CONCRETE BASE |                  |             |
| DETAIL SHEET                            |                  |             |
| PROJECT NUMBER                          |                  |             |
| DRAWN BY: T.M.                          | SCALE: NO SCALE  | REVISED BY: |
| DATE: MAY 97                            |                  | DATE:       |
| CITY OF WICHITA                         |                  |             |
| DEPARTMENT OF PUBLIC WORKS              |                  |             |
| DIVISION OF TRAFFIC ENGINEERING         |                  |             |
| WM. G. MCKINLEY P.E.                    | TRAFFIC ENGINEER | SHEET TS5   |