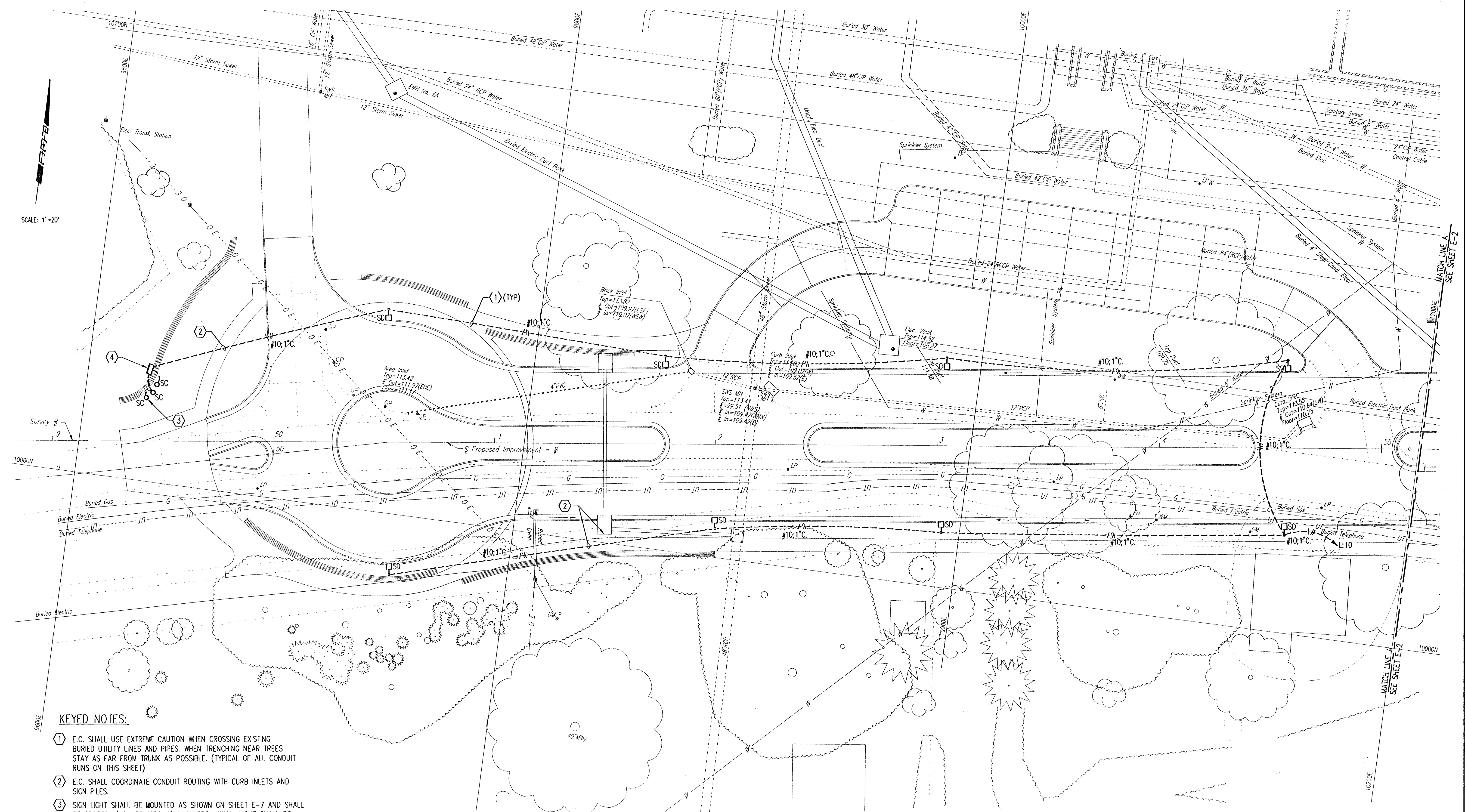


DSNR: ZDH OPER: MOB SCALE: 1"=20'-0"
 E: 1995/09/7/3/000/MUSE/1.DWG 06-04-2001 01:09:28 pm

SCALE: 1"=20'



KEYED NOTES:

- ① E.C. SHALL USE EXTREME CAUTION WHEN CROSSING EXISTING BURIED UTILITY LINES AND PIPES. WHEN TRENCHING NEAR TREES STAY AS FAR FROM TRUNK AS POSSIBLE. (TYPICAL OF ALL CONDUIT RUNS ON THIS SHEET)
- ② E.C. SHALL COORDINATE CONDUIT ROUTING WITH CURB INLETS AND SIGN PILES.
- ③ SIGN LIGHT SHALL BE MOUNTED AS SHOWN ON SHEET E-7 AND SHALL BE SPACED 4' ON CENTERS, 1' AWAY FROM WALL. LIGHT SHALL BE CENTERED ON SIGN. LIGHTS SHALL BE SPLIT UP INTO TWO CIRCUITS AND CONNECT TO 2 POLE BREAKER IN NEMA -3R ENCLOSURE.
- ④ PROVIDE 500VA, 480V PRIMARY 240/120V SECONDARY TRANSFORMER. PROVIDE IN-LINE FUSES ON THE PRIMARY OF TRANSFORMER. PROVIDE (1) 20A, 2P, 240V. CIRCUIT BREAKER. ROUTE #6 AWG. CU CONDUCTOR TO 3/4"x20" GROUND ROD. ALL DEVICES SHALL BE MOUNTED IN NEMA-3R, PAD MOUNTED ENCLOSURE, MAX. 18" HIGH. SUBMIT DETAIL FOR APPROVAL.

REV.	DATE	DESCRIPTION

HELLMUTH, OBATA & KASSEBAUM, INC.
 DALLAS, TEXAS
 PROFESSIONAL ENGINEERING
 CONSULTANTS, P.A.
 WICHITA, KANSAS
 BRAD J. GOLDBERG
 DALLAS, TEXAS

**MUSEUM DISTRICT ROADWAY AND
 PEDESTRIAN IMPROVEMENTS
 WICHITA, KANSAS**

LIGHTING PLAN

PROJECT NO. 99773-000	SCALE: 1"=20'	SHEET E-1
--------------------------	------------------	--------------