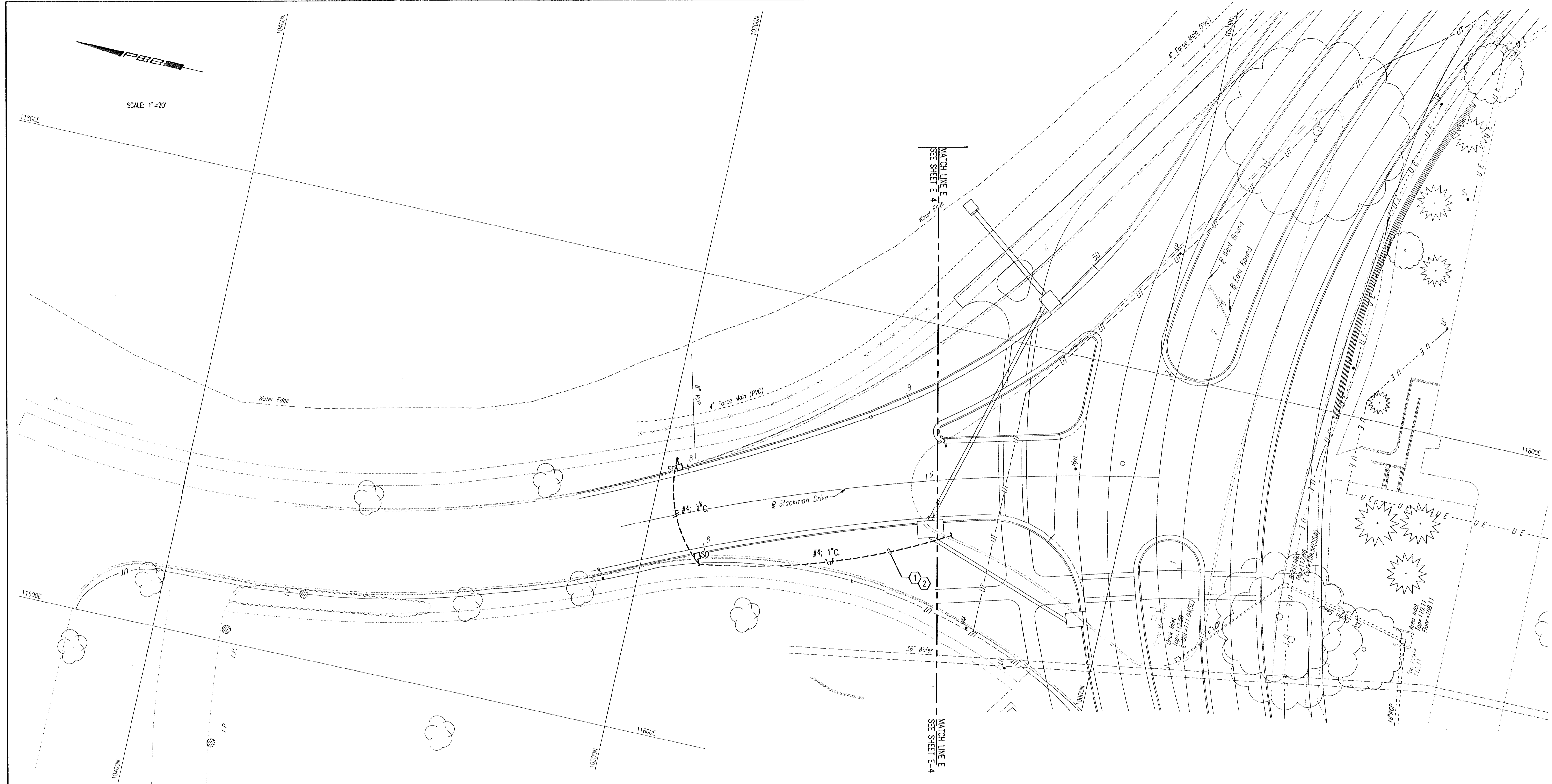


DSNR: ZOH OPER: MDB SCALE: 1"=20'-0" 01:49:23 pm
 E:\1995\99773\000\WUSEG.DWG 06-04-2001



SCALE: 1"=20'

KEYED NOTES:

- ① E.C. SHALL USE EXTREME CAUTION WHEN CROSSING EXISTING BURIED UTILITY LINES AND PIPES. WHEN TRENCHING NEAR TREES STAY AS FAR FROM TRUNK AS POSSIBLE. (TYPICAL OF ALL CONDUIT RUNS ON THIS SHEET)
- ② E.C. SHALL COORDINATE CONDUIT ROUTING WITH CURB INLETS AND SIGN PILES.

REV.	DATE	DESCRIPTION

HELLMUTH, OBATA & KASSEBAUM, INC.
 DALLAS, TEXAS
 PROFESSIONAL ENGINEERING
 CONSULTANTS, P.A.
 WICHITA, KANSAS
 BRAD J. GOLDBERG
 DALLAS, TEXAS

MUSEUM DISTRICT ROADWAY AND PEDESTRIAN IMPROVEMENTS WICHITA, KANSAS			
LIGHTING PLAN			
PROJECT NO. 99773-000	SCALE: 1"=20'	SHEET E-6	