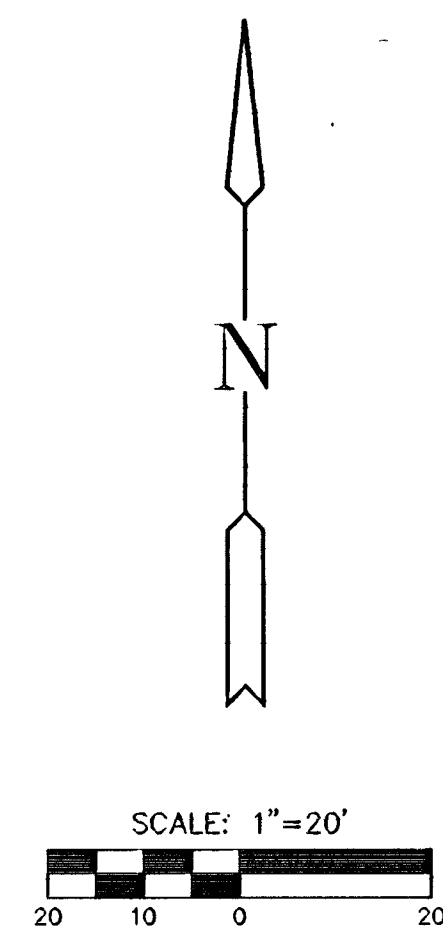
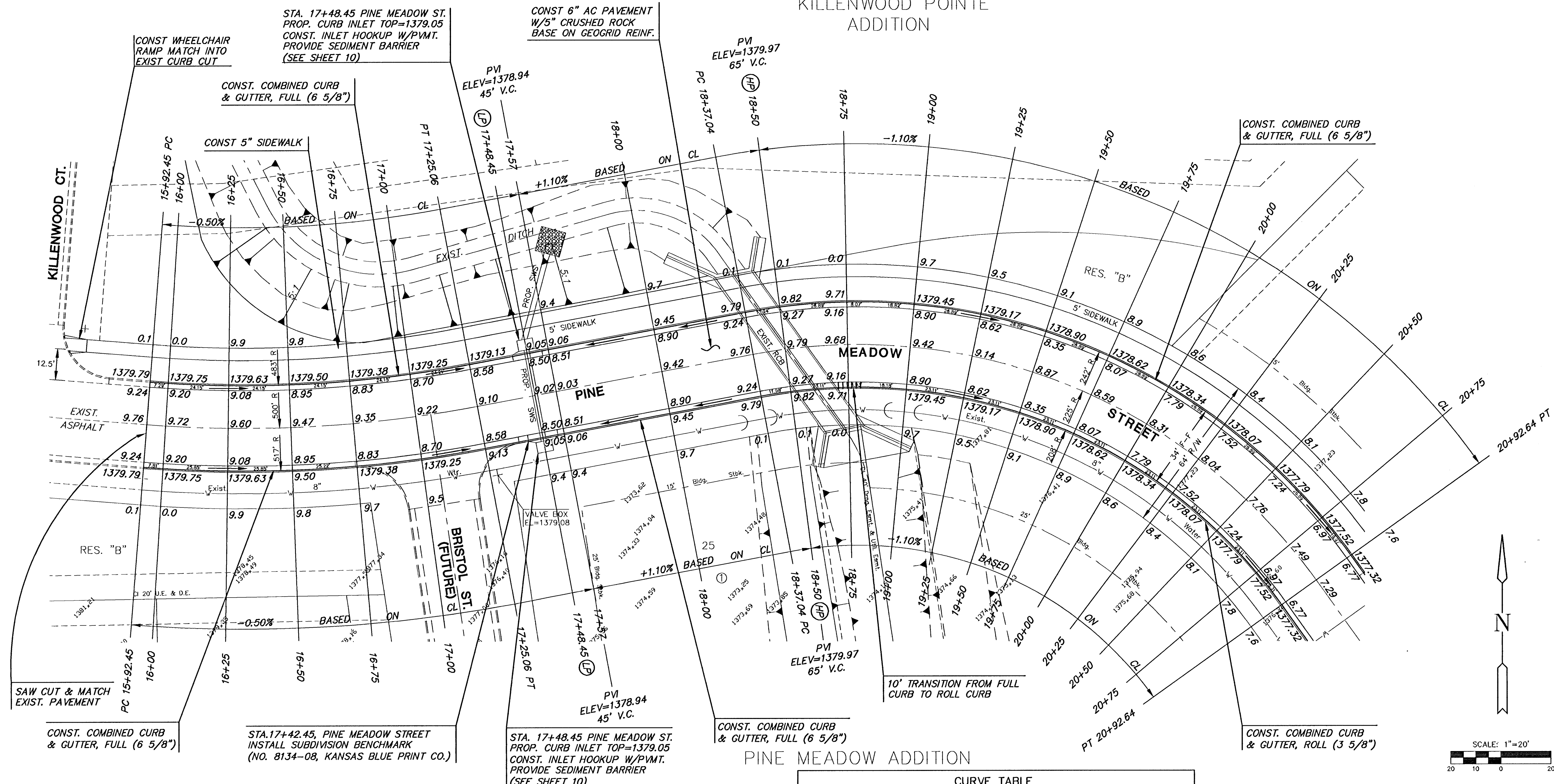


KILLENWOOD POINT  
ADDITION



**CURVE TABLE**

$\Delta = 15^{\circ}11'47"$  R = 500.00' T = 66.70' L = 132.61' LC = 132.23'

CURVE DATA BASED ON CENTERLINE  $\Delta / 2 = 07^{\circ}35'53"$

STATION	ARC	CHORD LENGTH		DEFLECTION	TOTAL DEFLECTION
		8' Off LtCb	8' Off RtCb		
15+92.45	-	-	-	00°00'00"	00°00'00"
16+00.00	7.55'	7.22'	7.88'	00°25'57"	00°25'57"
16+25.00	25.00'	23.90'	26.10'	01°25'57"	01°51'54"
16+50.00	25.00'	23.90'	26.10'	01°25'57"	03°17'51"
16+75.00	25.00'	23.90'	26.10'	01°25'57"	04°43'47"
17+00.00	25.00'	23.90'	26.10'	01°25'57"	06°09'44"
17+25.00	25.00'	23.90'	26.10'	01°25'57"	07°35'40"
17+42.45	06'	06'	07'	00°00'13"	07°35'54"

Def/Ft = 3.43775 Min.

**CURVE TABLE**

$\Delta = 65^{\circ}05'23"$  R = 225.00' T = 143.59' L = 255.61' LC = 242.08'

CURVE DATA BASED ON CENTERLINE  $\Delta / 2 = 32^{\circ}32'41"$

STATION	ARC	CHORD LENGTH		DEFLECTION	TOTAL DEFLECTION
		8' Off LtCb	8' Off RtCb		
18+37.04	-	-	-	00°00'00"	00°00'00"
18+50.00	12.96'	14.23'	11.69'	01°39'00"	01°39'00"
18+75.00	25.00'	27.43'	22.54'	03°10'59"	04°50'00"
19+00.00	25.00'	27.43'	22.54'	03°10'59"	08°00'59"
19+25.00	25.00'	27.43'	22.54'	03°10'59"	11°11'58"
19+50.00	25.00'	27.43'	22.54'	03°10'59"	14°22'57"
19+75.00	25.00'	27.43'	22.54'	03°10'59"	17°33'56"
20+00.00	25.00'	27.43'	22.54'	03°10'59"	20°44'55"
20+25.00	25.00'	27.43'	22.54'	03°10'59"	23°55'55"
20+50.00	25.00'	27.43'	22.54'	03°10'59"	27°06'54"
20+75.00	25.00'	27.43'	22.54'	03°10'59"	30°17'53"
20+92.64	17.64'	19.37'	15.92'	02°14'49"	32°32'42"

Def/Ft = 7.63944 Min.

**MKEC**  
ENGINEERING CONSULTANTS  
411 N. WEBB ROAD  
WICHITA, KS. 67206  
316 - 684 - 9600

**PINE MEADOW & PINE MEADOW SECOND ADDITION**  
PROJECT NAME

**PINE MEADOW STREET**  
SHEET TITLE

DFL DESIGN BY. DMU/KKL DRAWN BY. GJA CHECKED BY.  
MARCH 2002 DATE. 01077E1 JOB NO. 4 / 20 SHEET OF

H:\CIVIL\01077E1\DWG\PAV\01077E1.DWG Tue Mar 05 15:30:14 2002