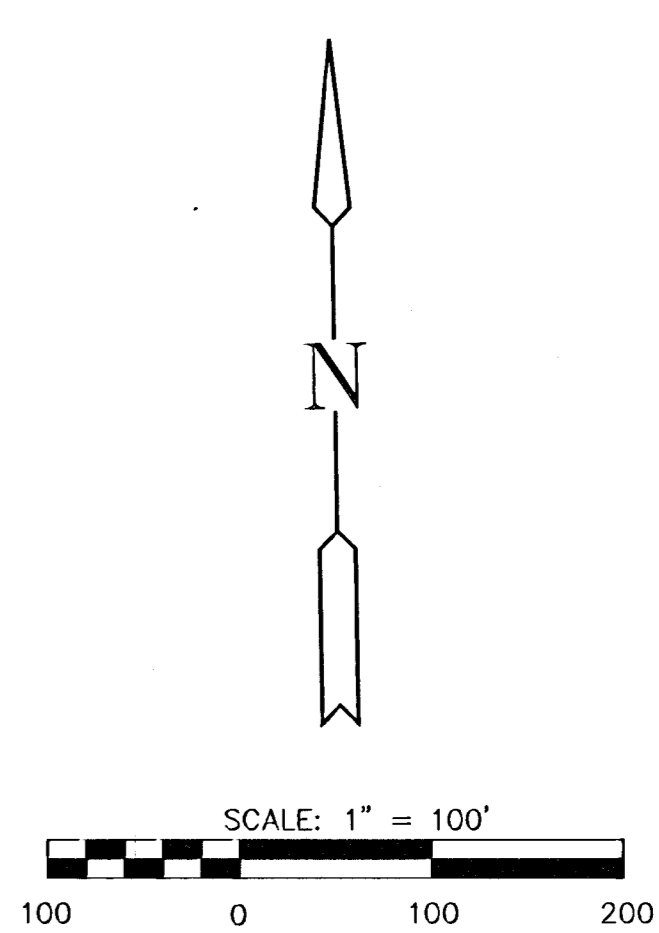
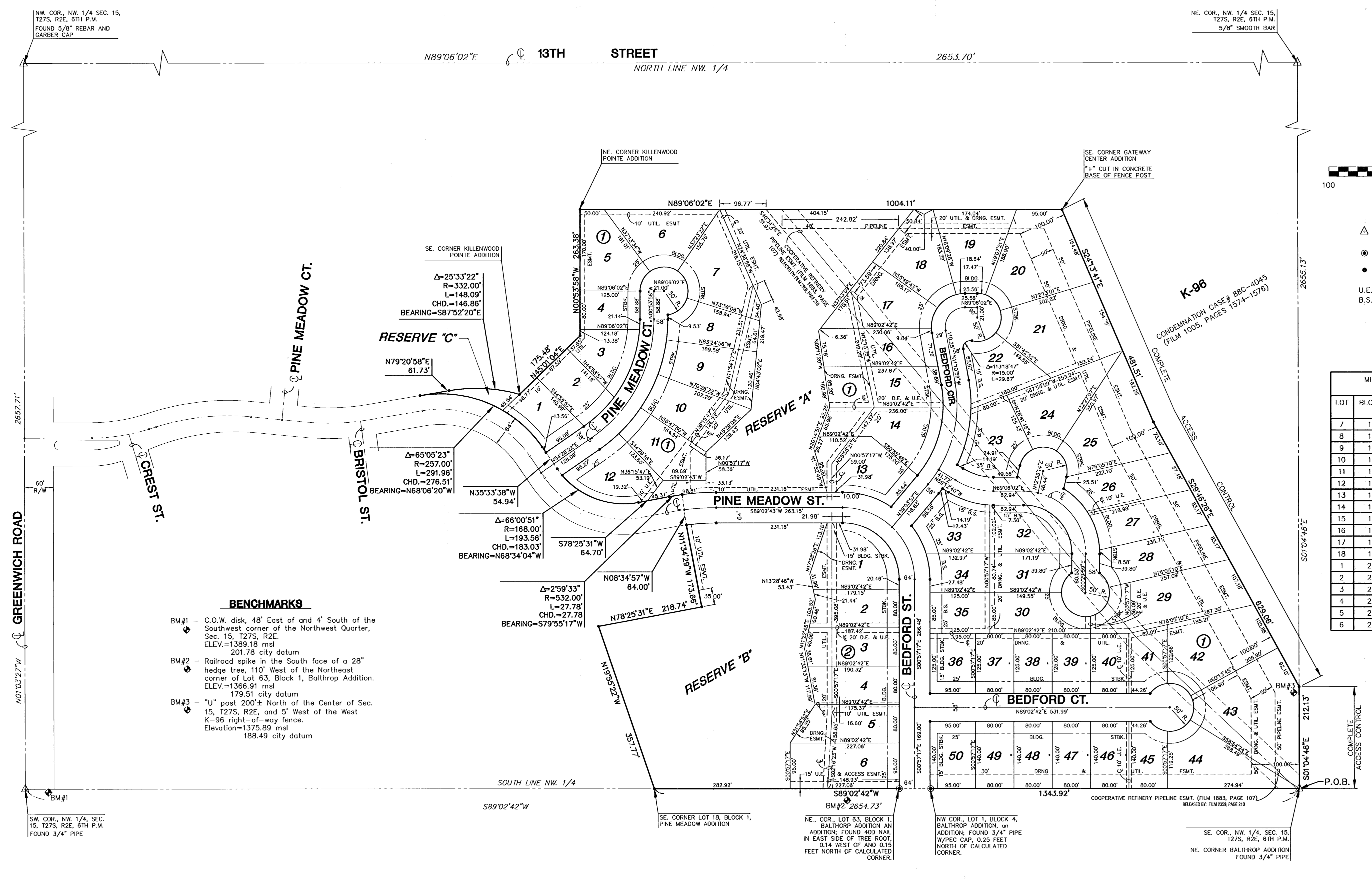


FINAL PLAT

PINE MEADOW SECOND ADDITION

AN ADDITION TO WICHITA, SEDGWICK COUNTY, KANSAS



- LEGEND**
- △ = SECTION CORNER MONUMENT FOUND
 - = FOUND PROPERTY CORNER REBAR
 - = SET 5/8" REBAR W/ MKEC CLS #39 CAP
 - U.E. = UTILITY EASEMENT
 - B.S. = BUILDING SETBACK

MINIMUM PAD ELEVATIONS (LOWEST OPENINGS)			
LOT	BLOCK	ELEVATION (CITY DATUM)	ELEVATION (USGS)
7	1	186.8	1374.2
8	1	186.8	1374.2
9	1	186.8	1374.2
10	1	186.8	1374.2
11	1	186.8	1374.2
12	1	186.8	1374.2
13	1	186.8	1374.2
14	1	186.8	1374.2
15	1	186.8	1374.2
16	1	186.8	1374.2
17	1	186.8	1374.2
18	1	186.8	1374.2
1	2	182.3	1369.7
2	2	182.3	1369.7
3	2	182.3	1369.7
4	2	182.3	1369.7
5	2	182.3	1369.7
6	2	182.3	1369.7

- BENCHMARKS**
- BM#1 - C.O.W. disk, 48" East of and 4" South of the Southwest corner of the Northwest Quarter, Sec. 15, T27S, R2E. ELEV.=1389.18 msl 201.78 city datum
 - BM#2 - Railroad spike in the South face of a 28" hedge tree, 110' West of the Northeast corner of Lot 63, Block 1, Balthrop Addition. ELEV.=1366.91 msl 179.51 city datum
 - BM#3 - "U" post 200± North of the Center of Sec. 15, T27S, R2E, and 5' West of the West K-96 right-of-way fence. Elevation=1375.89 msl 188.49 city datum

NW COR., NW 1/4 SEC. 15, T27S, R2E, 6TH P.M. FOUND 5/8" REBAR AND GARBOR CAP

NE COR., NW 1/4 SEC. 15, T27S, R2E, 6TH P.M. 5/8" SMOOTH BAR

SW COR., NW 1/4 SEC. 15, T27S, R2E, 6TH P.M. FOUND 3/4" PIPE

SE CORNER LOT 18, BLOCK 1, PINE MEADOW ADDITION

NE COR., LOT 63, BLOCK 1, BALTHROP ADDITION. AN ADDITION: FOUND 400 NAIL IN EAST SIDE OF TREE ROOT, 0.14 WEST OF AND 0.15 FEET NORTH OF CALCULATED CORNER.

NW COR., LOT 1, BLOCK 4, BALTHROP ADDITION, on ADDITION: FOUND 3/4" PIPE W/PEC CAP, 0.25 FEET NORTH OF CALCULATED CORNER.

SE COR., NW 1/4 SEC. 15, T27S, R2E, 6TH P.M. NE CORNER BALTHROP ADDITION FOUND 3/4" PIPE