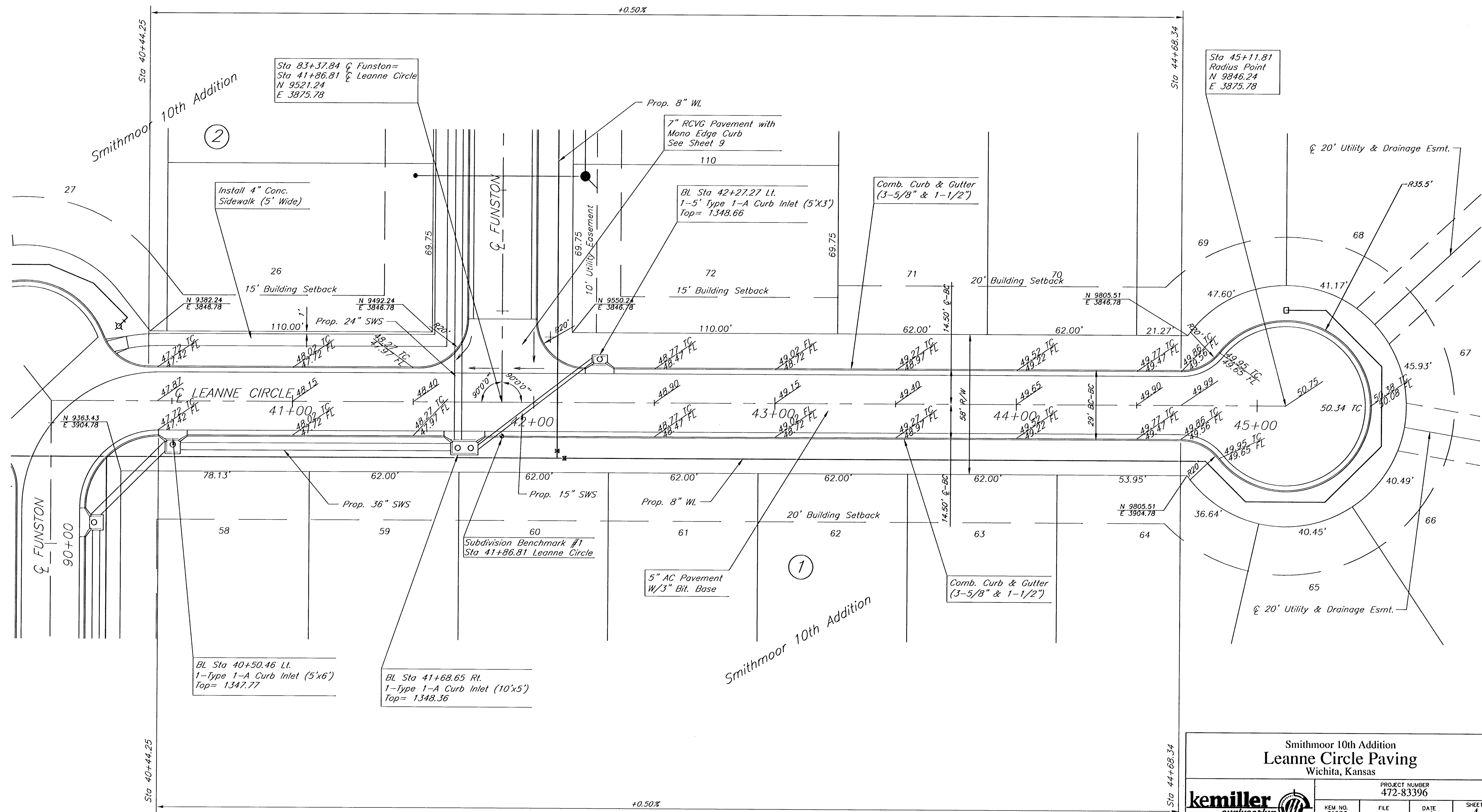


BENCHMARKS:

BM#1 City disc on the SW corner traffic signal base on the NE corner of the intersection of Harry St. and Greenwich Rd. Elev. = 1343.49 USGS

BM#2 " " cut on the SW corner of the N. Headwall at the east end of pond on the W. side of Greenwich Rd., approx. 1000' S. of Harry St. Elev. = 1341.87 USGS



**Smithmoor 10th Addition
Leanne Circle Paving
Wichita, Kansas**

| | | | |
|---------------------------------------|---------------------|-----------------------------|---------------|
| kemiller <i>engineering</i> | | PROJECT NUMBER 472-83396 | |
| | | KEM NO. 01083 | DATE 01/02 |
| DESIGN RR | FILE PVPLAN2.dwg | DRAWN | REVISED |
| SHEET 4 | | OF 24 | |

518 S. Market, Wichita, KS 67202 318/264-0242