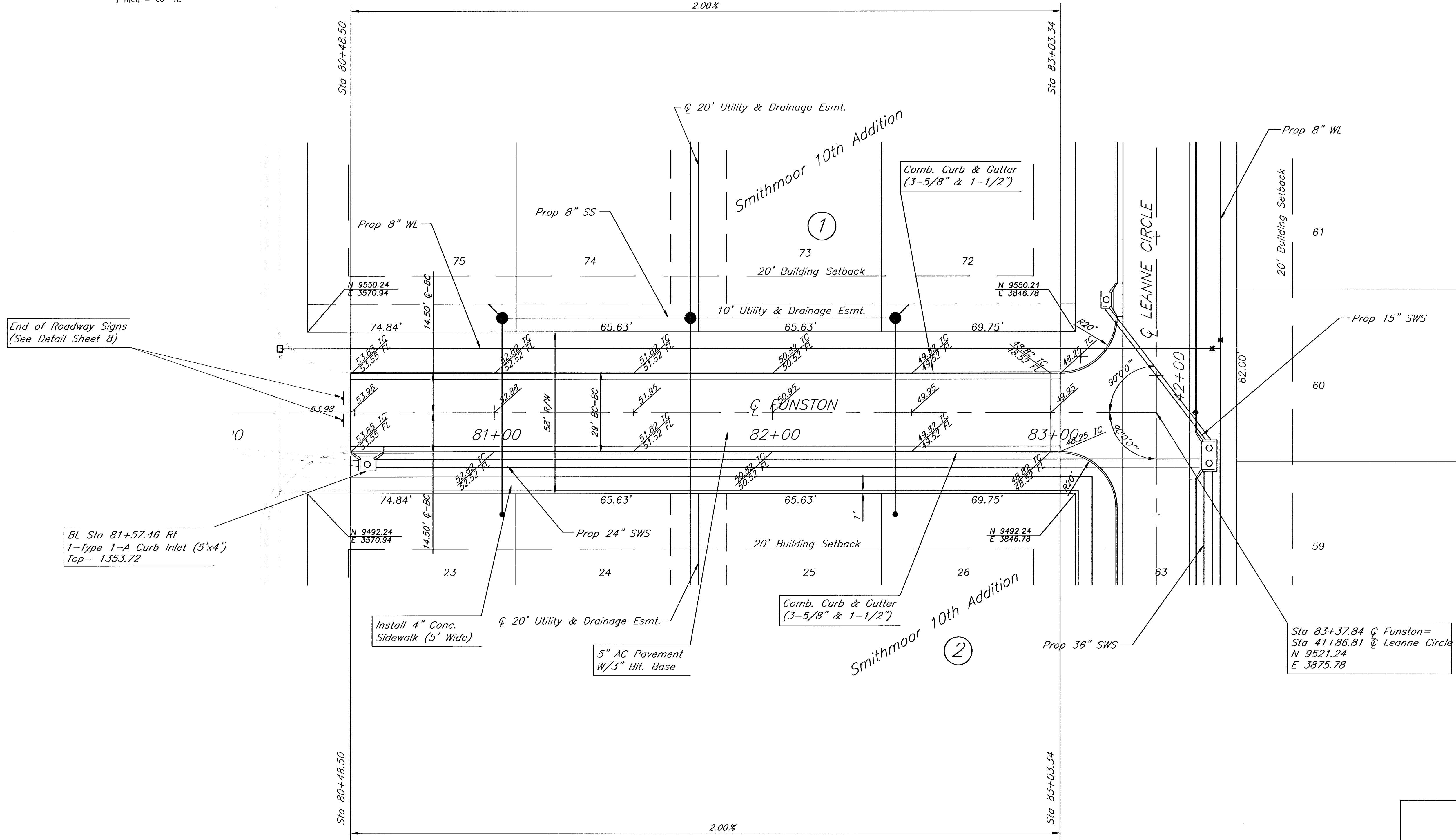


**BENCHMARKS:**

BM#1 City disc on the SW corner traffic signal base on the NE corner of the intersection of Harry St. and Greenwich Rd. Elev. = 1343.49 USGS

BM#2 " " cut on the SW corner of the N. Headwall at the east end of pond on the W. side of Greenwich Rd., approx. 1000' S. of Harry St. Elev. = 1341.87 USGS



End of Roadway Signs  
(See Detail Sheet 8)

BL Sta 81+57.46 Rt  
1-type 1-A Curb Inlet (5'x4')  
Top = 1.353.72

Install 4" Conc.  
Sidewalk (5' Wide)

5" AC Pavement  
W/3" Bit. Base

Comb. Curb & Gutter  
(3-5/8" & 1-1/2")

Sta 83+37.84 @ Funston =  
Sta 41+86.81 @ Leanne Circle  
N 9521.24  
E 3875.78

<b>Smithmoor 10th Addition</b> <b>Funston Paving Cont.</b> Wichita, Kansas			
PROJECT NUMBER <b>472-83396</b>			
<b>kemiller</b> <i>engineering</i>	KEM NO. 01083	FILE PVPLAN4.dwg	DATE 01/02
	DESIGN RR	DRAWN	REVISED
			SHEET <b>6</b> OF <b>24</b>

518 S. Market,  
Wichita, KS 67202

316/264-0242