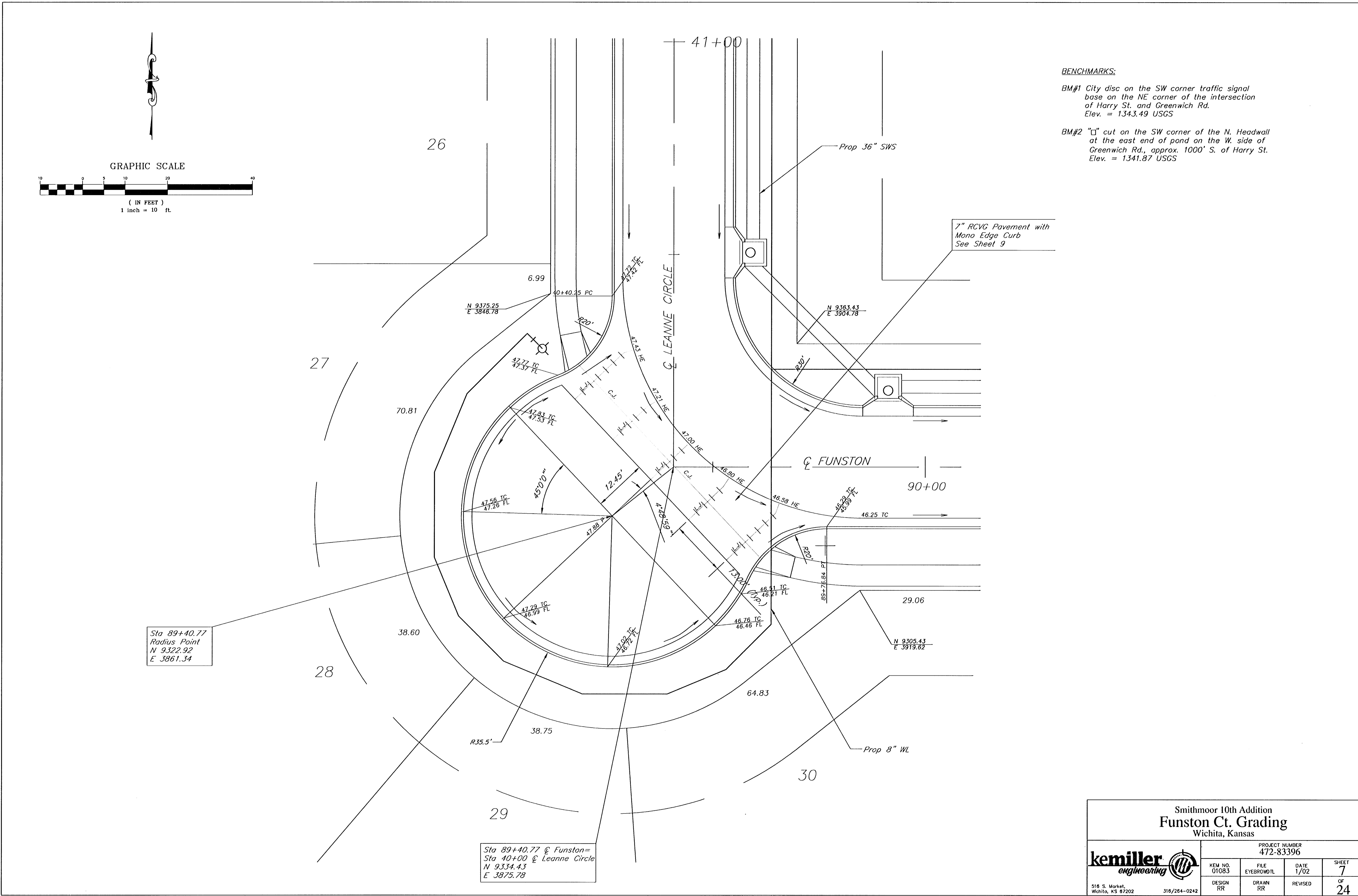


Sta 89+40.77  
Radius Point  
N 9322.92  
E 3861.34

Sta 89+40.77 @ Funston=  
Sta 40+00 @ Leanne Circle  
N 9334.43  
E 3875.78

**BENCHMARKS:**  
 BM#1 City disc on the SW corner traffic signal base on the NE corner of the intersection of Harry St. and Greenwich Rd. Elev. = 1343.49 USGS  
 BM#2 "□" cut on the SW corner of the N. Headwall at the east end of pond on the W. side of Greenwich Rd., approx. 1000' S. of Harry St. Elev. = 1341.87 USGS

7" RCVG Pavement with Mono Edge Curb  
See Sheet 9



Smithmoor 10th Addition <b>Funston Ct. Grading</b> Wichita, Kansas			
PROJECT NUMBER <b>472-83396</b>			
<b>kemiller</b> <i>engineering</i>	KEM NO. 01083	FILE EYEBROWDL	DATE 1/02
	DESIGN RR	DRAWN RR	REVISED
SHEET <b>7</b> OF <b>24</b>			516 S. Market, Wichita, KS 67202