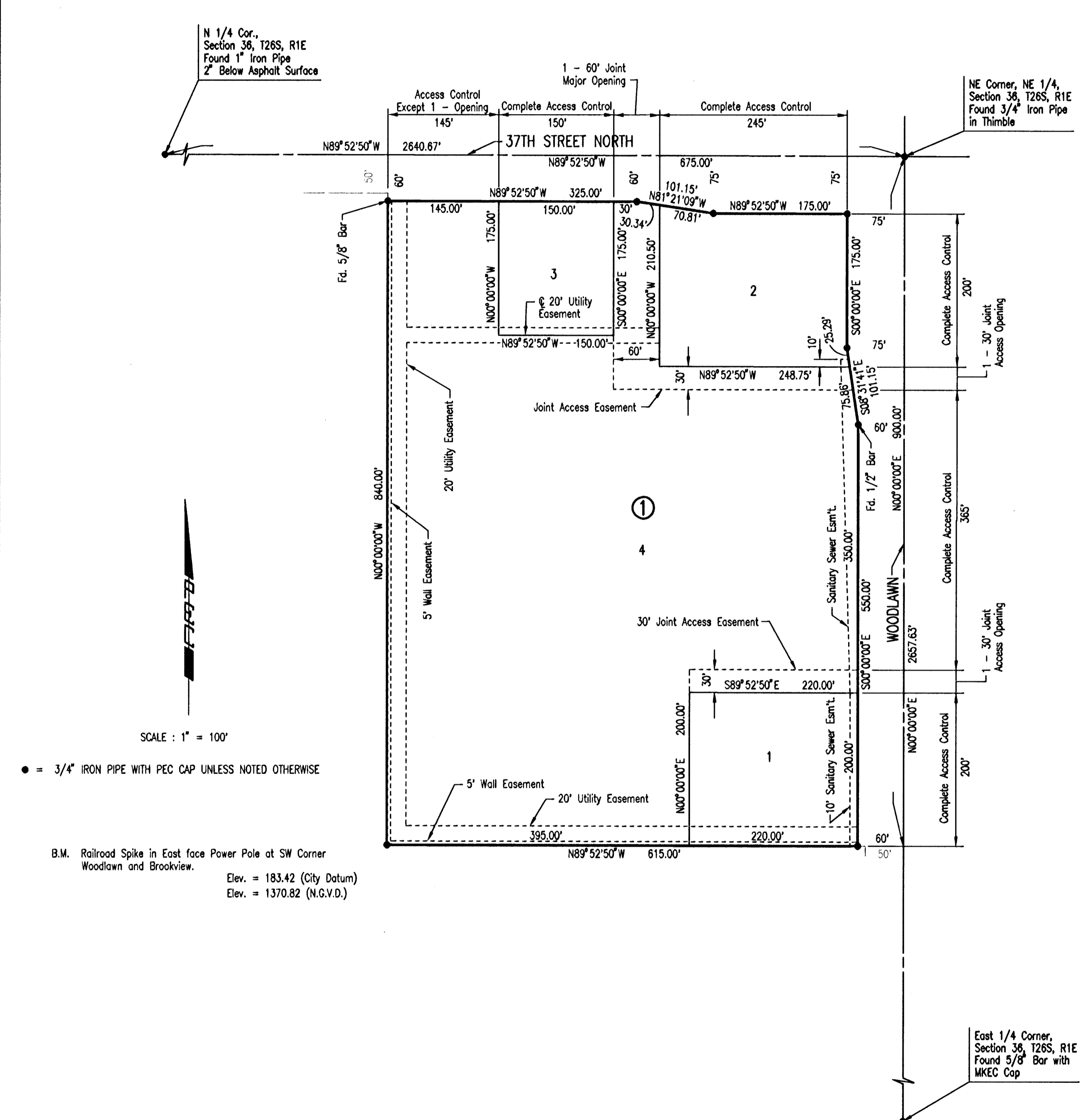


# WHISPERING BROOK COMMERCIAL 2ND ADDITION

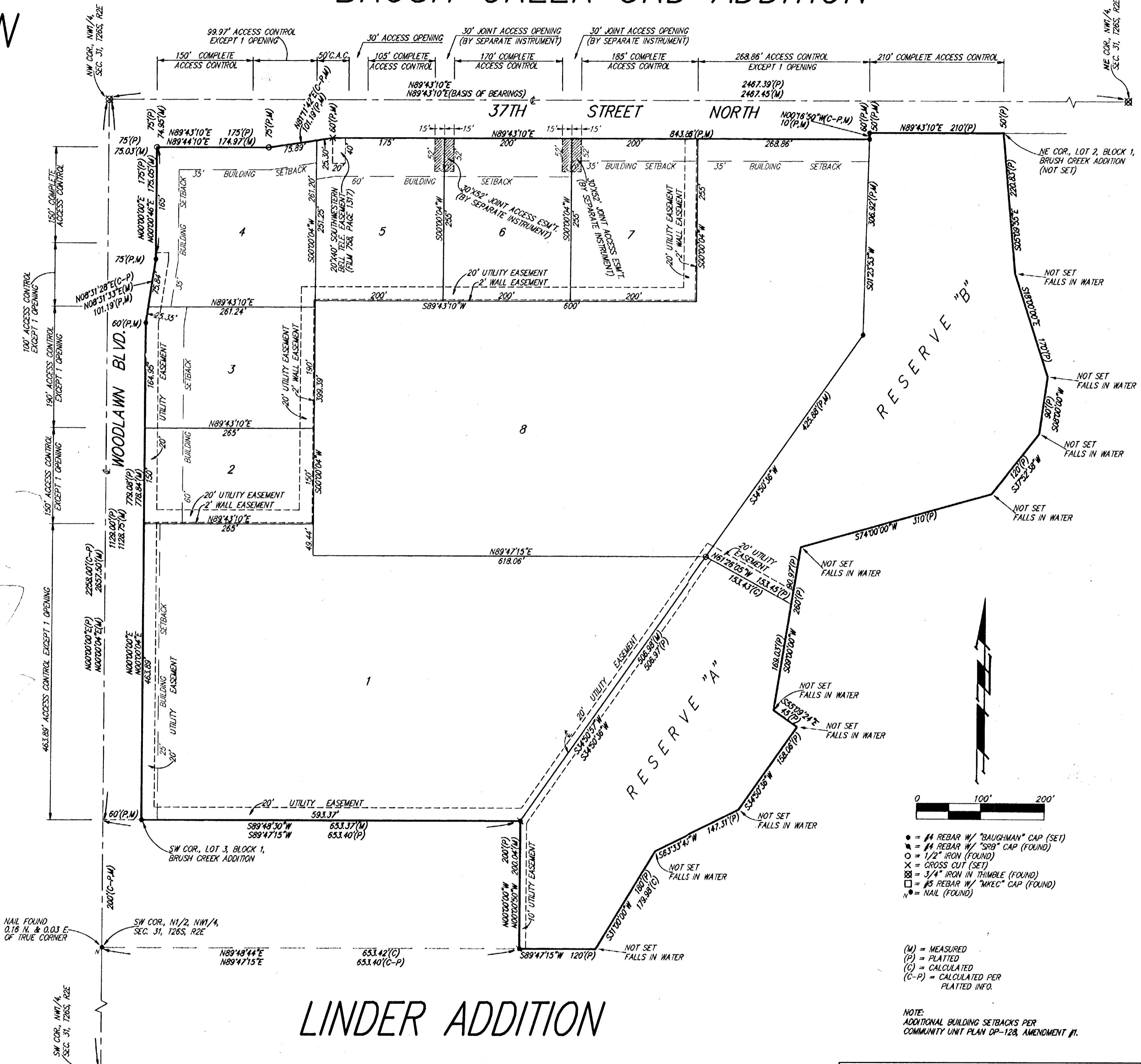
# BRUSH CREEK 3RD ADDITION



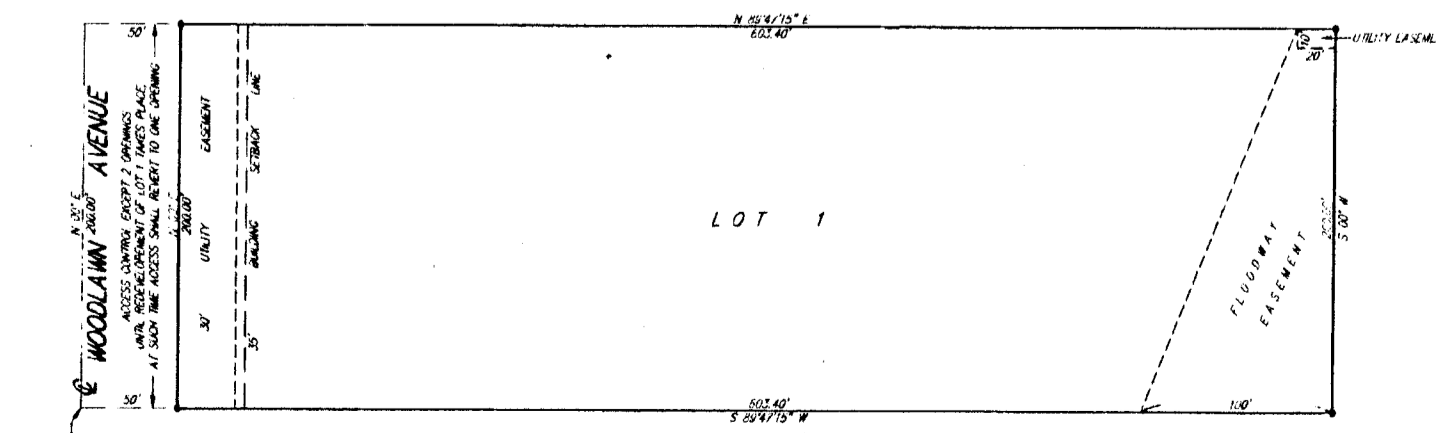
SCALE: 1" = 100'

● = 3/4" IRON PIPE WITH PEC CAP UNLESS NOTED OTHERWISE

B.M. Railroad Spike in East face Power Pole at SW Corner Woodlawn and Brookview.  
Elev. = 183.42 (City Datum)  
Elev. = 1370.82 (N.G.V.D.)



# LINDER ADDITION



- = #4 REBAR W/ "DAUGHMAN" CAP (SET)
- = #4 REBAR W/ "SOS" CAP (FOUND)
- = 1/2" IRON (FOUND)
- × = CROSS CUT (SET)
- ⊗ = 3/4" IRON IN THIMBLE (FOUND)
- = #5 REBAR W/ "WEC" CAP (FOUND)
- = NAIL (FOUND)

(M) = MEASURED  
(P) = PLATTED  
(C) = CALCULATED  
(C-P) = CALCULATED PER PLATTED INFO

NOTE: ADDITIONAL BUILDING SETBACKS PER COMMUNITY UNIT PLAN 09-128, AMENDMENT #1.

WOODLAWN	
PLATS	
Professional Engineering Consultants, P.A. 303 S. TOPEKA • WICHITA, KANSAS 67202 316-262-2691 • FAX 316-262-3003	
Designed by	DRC
Checked by	BER
Drawn by	DEP
Date	JUNE, 2001
Job No.	01034

DSNR: BER OPER: ILS SCALE: 1=100.00  
 Q:\2001\01034\000\Woodlawn\PLAT\_11-13-2001\_01:52:39.pn