

SCALE: 1" = 10'
 * - MATCH EXISTING

6"x12" W4xW4 WIRE FABRIC REINFORCING SHALL BE PLACED SUCH THAT THE WIRES WITH THE 6" SPACING WILL RUN PARALLEL WITH THE LONGITUDINAL JOINT.

5" Asphaltic Concrete Pavement (3" Bit. Base) over 6" Crushed Rock Base on Fabric Reinforcement.

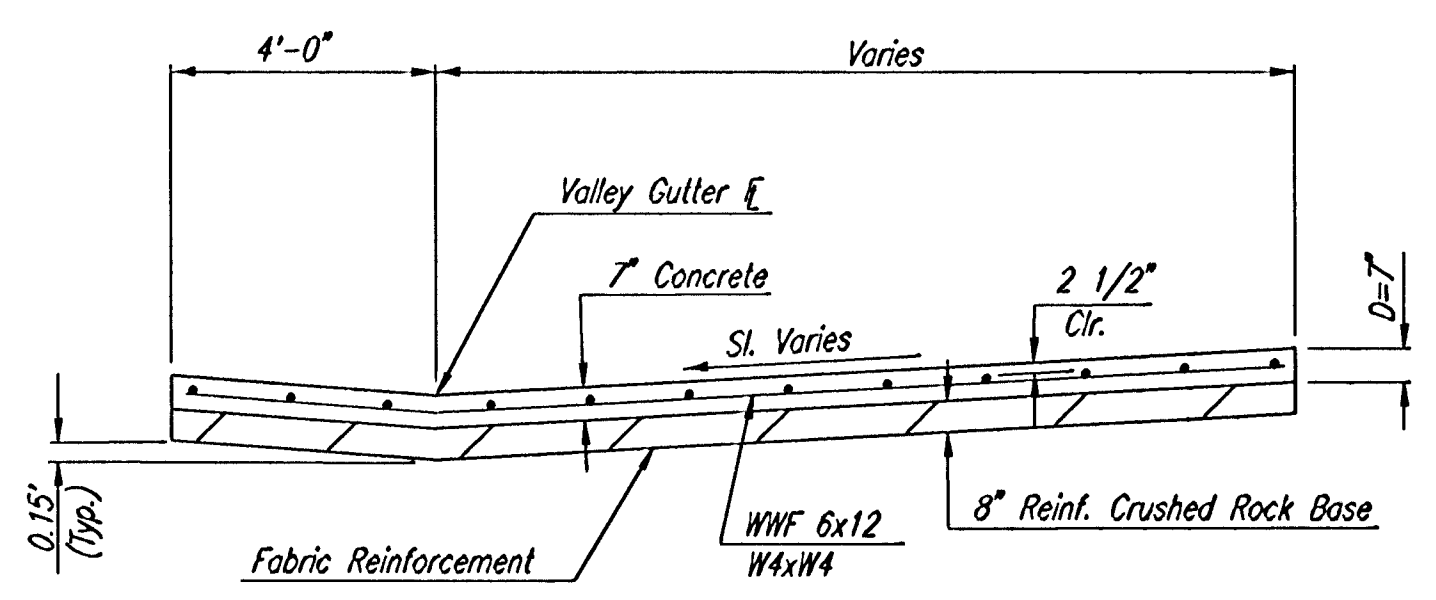
Combined Curb and Gutter (6 5/8") (Typ.)

See Wing Reinforcing Detail this sheet (Typ.)

Sta. 3+55.02 @ Woodlawn = Sta. 40+00.00 @ Brookview

Δ - TRANSITION CURB HT. FROM 0.55' TO 0.50'

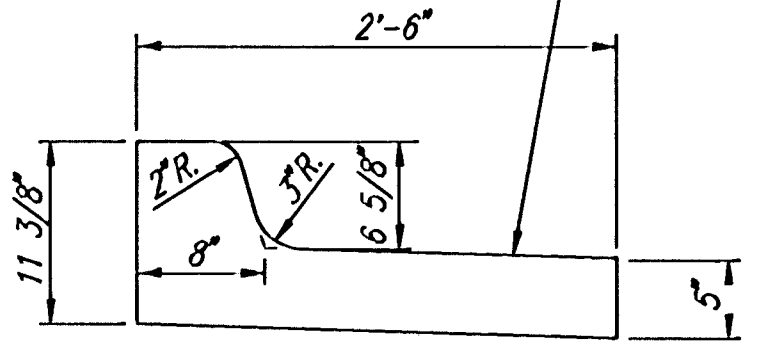
WOODLAWN/BROOKVIEW INTERSECTION DETAIL



SECTION A-A

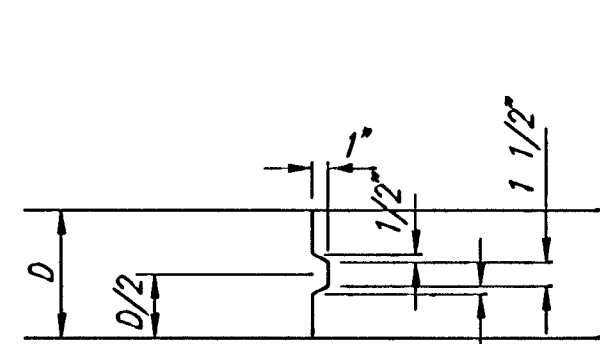
NOTE: OMIT REINFORCING MESH AT ALL JOINTS
 NOTE: ALL CONCRETE VALLEY GUTTER REINFORCEMENT SHALL BE ADEQUATELY SUPPORTED BY BAR CHAIRS IN THE REQUIRED POSITION UNLESS APPROVED OTHERWISE BY THE ENGINEER.

Slope same as adjoining pavement

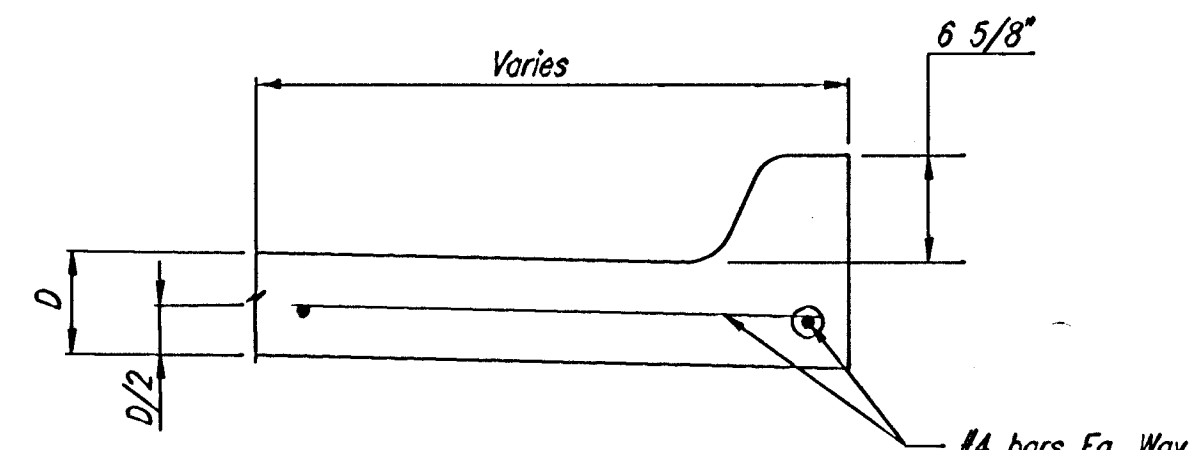


COMBINED CURB & GUTTER (6 5/8")

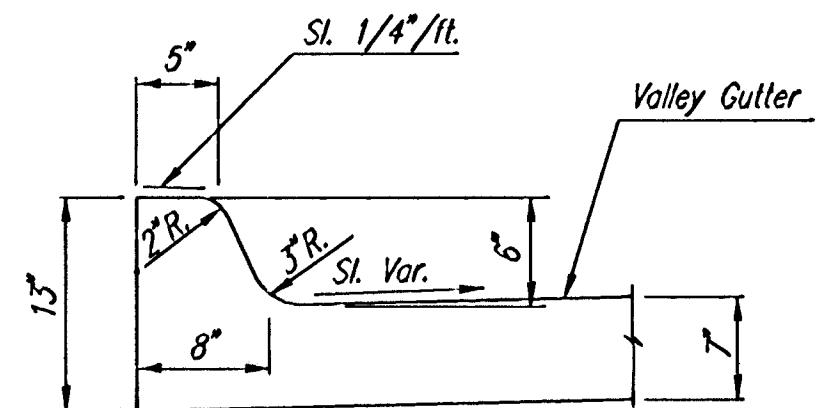
CONTRACTION JOINT DETAIL REINFORCED PAVEMENT (C.J.)



KEYWAY DETAIL

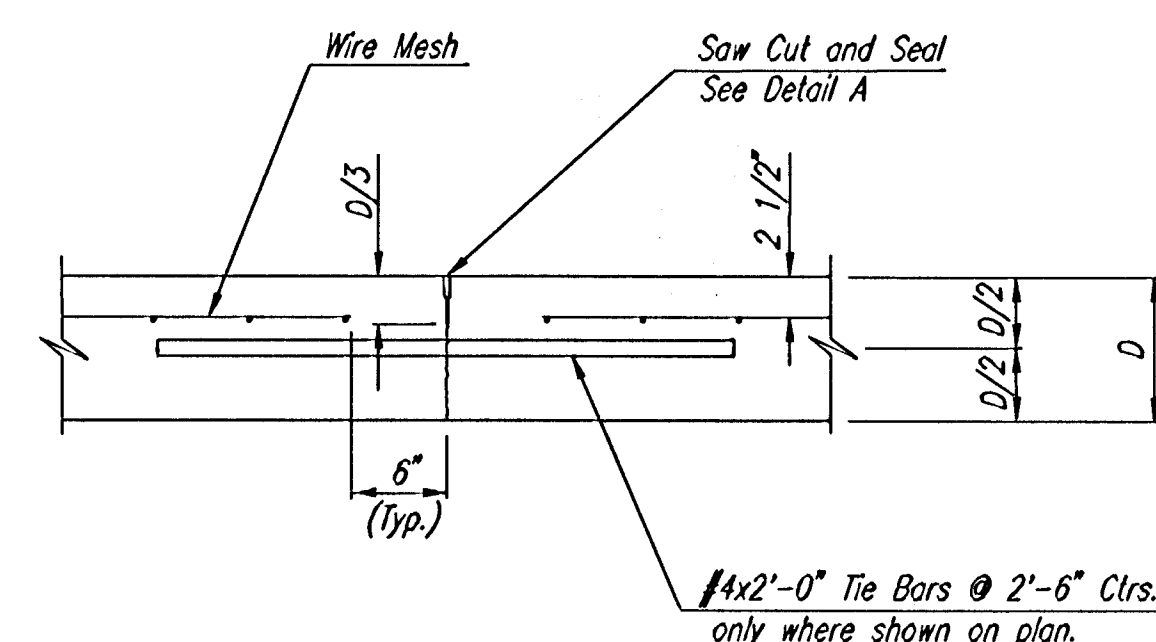


SECTION C-C



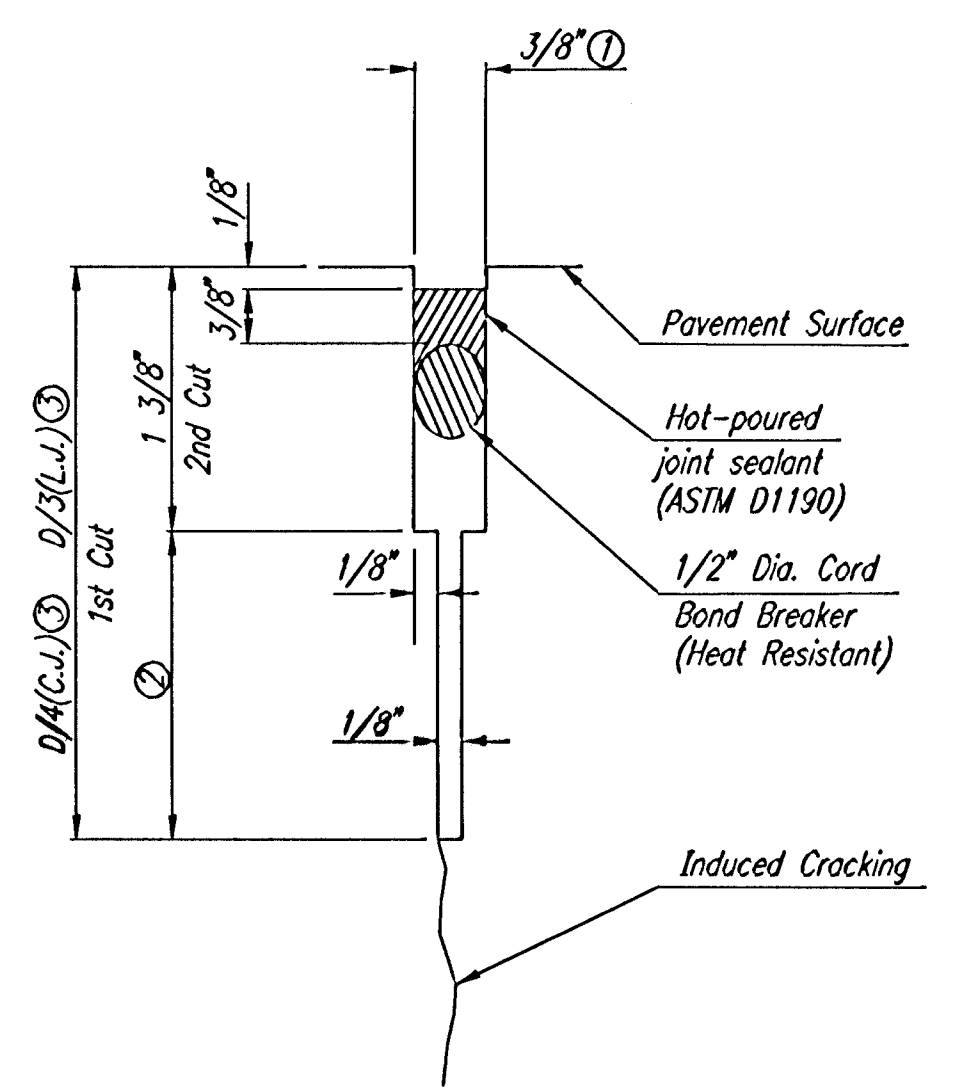
DETAIL B

LONGITUDINAL JOINT DETAIL REINFORCED PAVEMENT (TRANSVERSE SECTION) (L.J.)



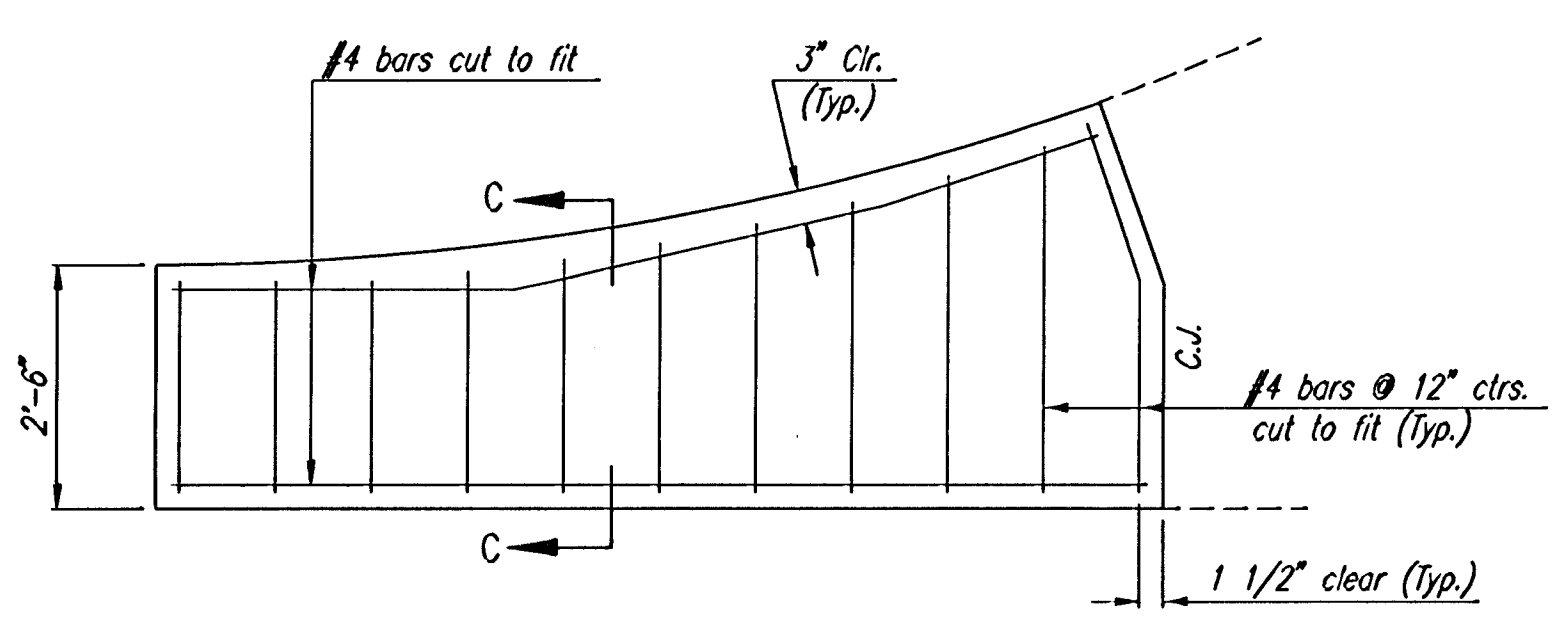
- ① To be accomplished in 2 cuts for Longitudinal Joints and Contraction Joints. Initial cut to be 1/8" wide.
- ② Eliminate bottom of cut when metal keyway is used as part of Longitudinal or Transverse Construction Joint and at Doweled Construction Joint Locations.
- ③ 1 1/2" Minimum

DETAIL A

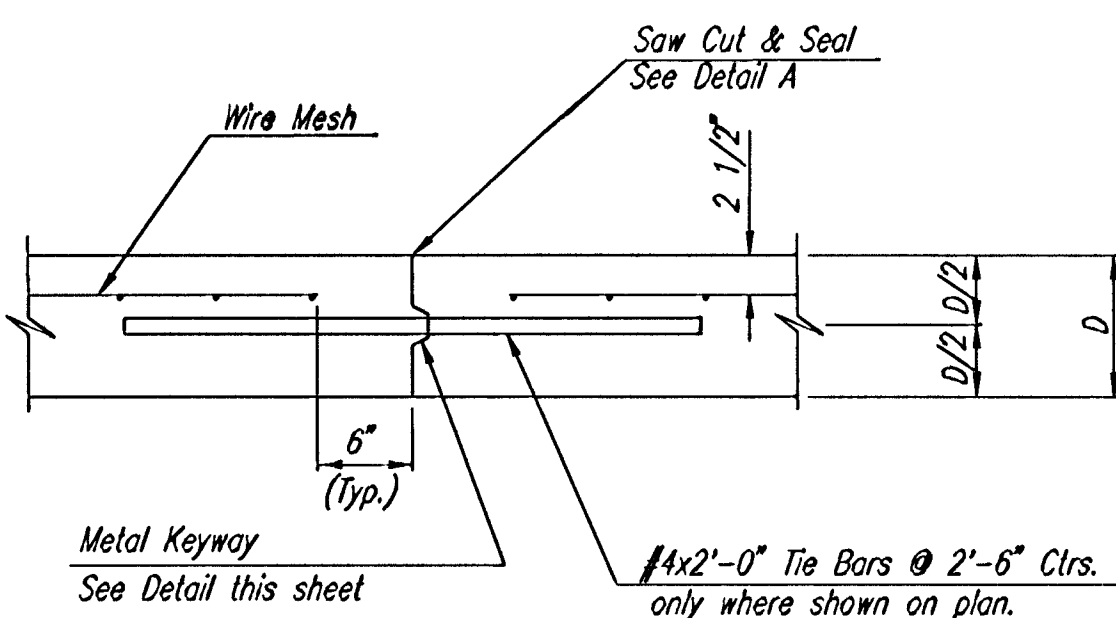


WING REINFORCING DETAIL

NOTE: OMIT WIRE FABRIC REINFORCING IN THIS SECTION.



LONGITUDINAL CONSTRUCTION JOINT DETAIL REINFORCED PAVEMENT (TRANSVERSE SECTION) (ALTERNATE L.J.)



DSNR: RMH OPER: DEP SCALE: 1=10.00
 C:\2001\034\000\Woodlawn\VALGUTDL 11-13-2001 01:16:48 pm

WOODLAWN

VALLEY GUTTER DETAILS

Professional Engineering Consultants, P.A.
 303 S. TOPEKA • WICHITA, KANSAS 67202
 316-262-2691 • FAX 316-262-3003

Designed by DRC	Checked by BER
Drawn by DEP	Date JUNE, 2001 Job No. 01034