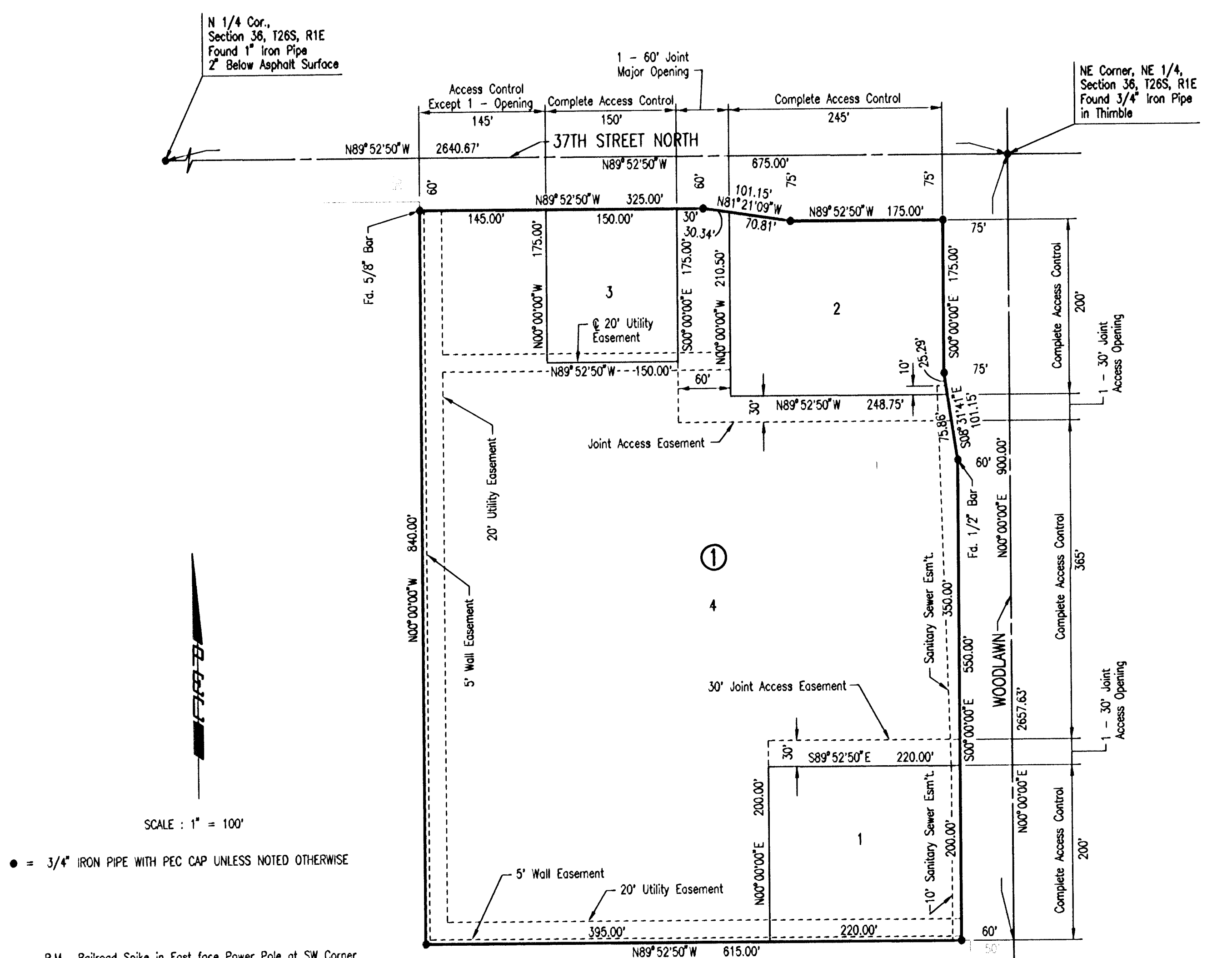


WHISPERING BROOK COMMERCIAL 2ND ADDITION

BRUSH CREEK 3RD ADDITION

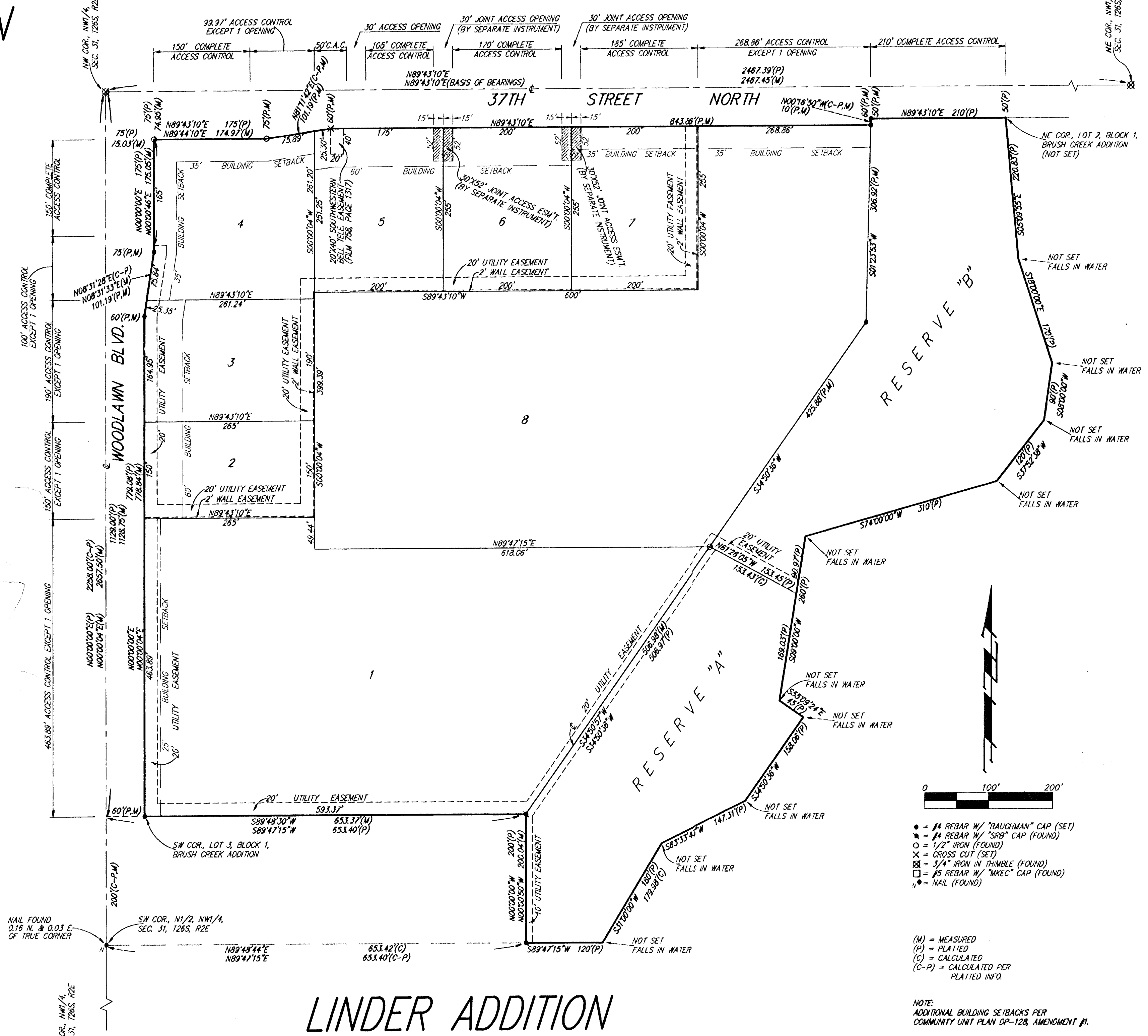


SCALE: 1" = 100'

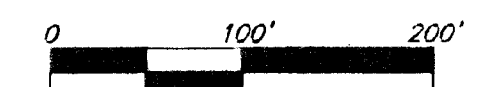
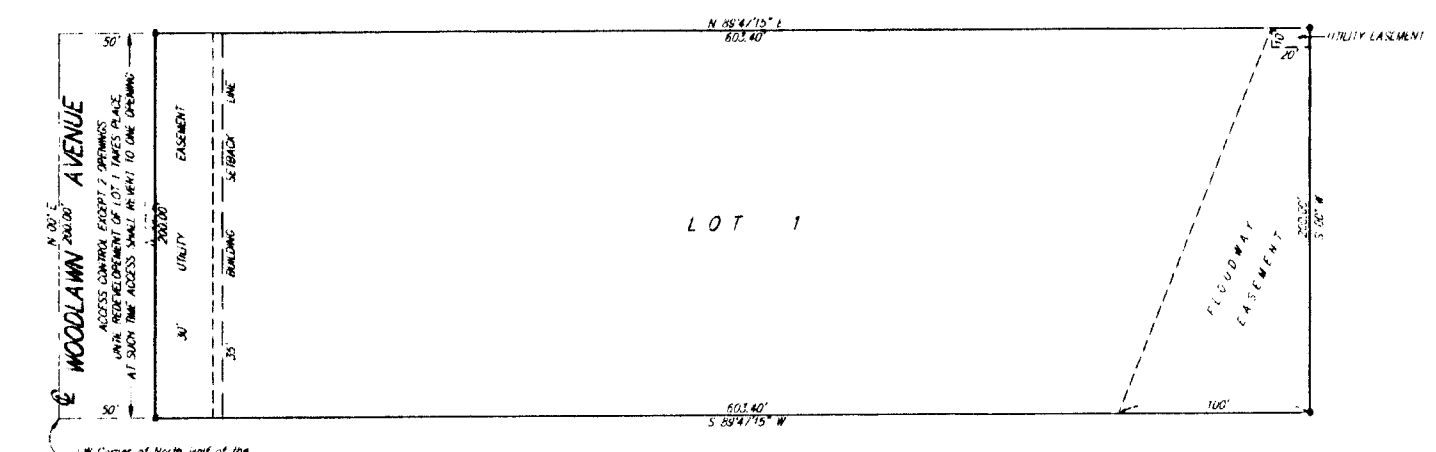
● = 3/4" IRON PIPE WITH PEC CAP UNLESS NOTED OTHERWISE

B.M. Railroad Spike in East face Power Pole at SW Corner Woodlawn and Brookview.
Elev. = 183.42 (City Datum)
Elev. = 1370.82 (N.G.V.D.)

DSNR: BER OPER: DEP SCALE: 1"=100.00
 C:\2001\01034\000\37th PLAT 11-14-2001 11:12:37 am



LINDER ADDITION



- = #4 REBAR W/ "BAUGHMAN" CAP (SET)
- = #4 REBAR W/ "SBB" CAP (FOUND)
- = 1/2" IRON (FOUND)
- X = GROSS CUT (SET)
- = 3/4" IRON IN THIMBLE (FOUND)
- = #5 REBAR W/ "MKEC" CAP (FOUND)
- = NAIL (FOUND)

(M) = MEASURED
(P) = PLATTED
(C) = CALCULATED
(C-P) = CALCULATED PER PLATTED INFO.

NOTE:
ADDITIONAL BUILDING SETBACKS PER COMMUNITY UNIT PLAN DP-128, AMENDMENT #1.

37TH STREET NORTH			
PLATS			
Professional Engineering Consultants, P.A. 303 S. TOPEKA • WICHITA, KANSAS 67202 316-262-2691 • FAX 316-262-3003			
Designed by	DRC	Checked by	BER
Drawn by	DEP	Date	JUNE, 2001
		Job No.	01034