

GENERAL NOTES

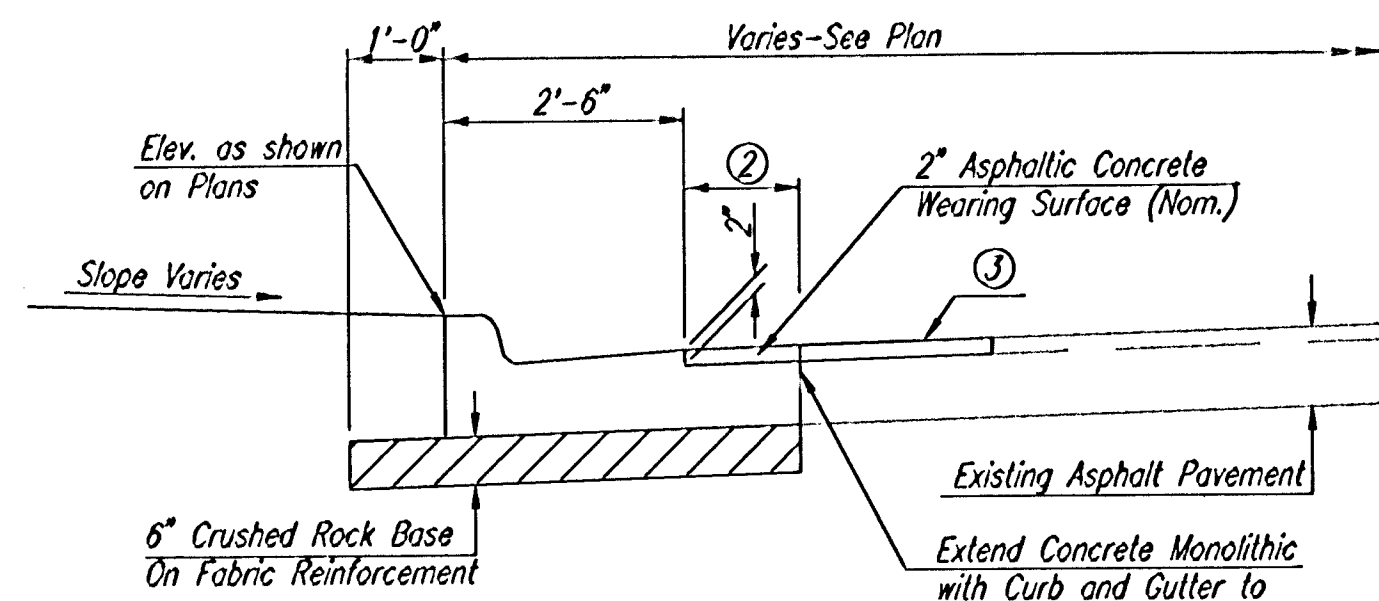
A FULL DEPTH SAW CUT SHALL BE PROVIDED IN CURB AND GUTTER AND/OR SIDEWALK AT THE REMOVAL LIMIT SHOWN ON THE PLANS. THE LIMITS OF REMOVAL SHALL EXTEND TO THE EXISTING JOINT IF A JOINT IS WITHIN 3 FEET OF THE PLAN REMOVAL LIMITS. CUTS SHALL BE CONSIDERED SUBSIDIARY TO OTHER CONTRACT ITEMS.

CONTRACTOR SHALL BE REQUIRED TO PROVIDE A MINIMUM OF ONE LANE OF TRAFFIC EACH DIRECTION AT ALL TIMES. CONTRACTOR SHALL PROVIDE, ERECT AND MAINTAIN ALL TRAFFIC CONTROL DEVICES ACCORDING TO THE LATEST EDITION OF THE "MANUAL ON UNIFORM TRAFFIC CONTROL DEVICES" (MUTCD).

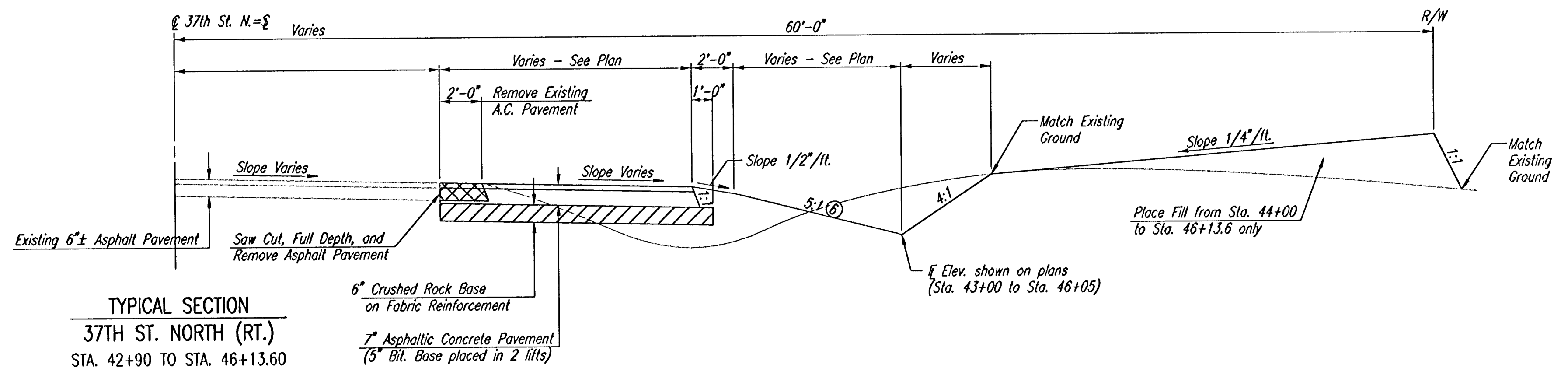
CONTRACTOR SHALL SUBMIT A CONSTRUCTION SEQUENCE AND TRAFFIC HANDLING PLAN TO THE ENGINEER FOR APPROVAL PRIOR TO COMMENCING WORK ON THE PROJECT.

ALL DISTURBED AREAS SHALL BE SEEDED/FERTILIZED AND MULCHED IN ACCORDANCE WITH THE SPECIFICATIONS.

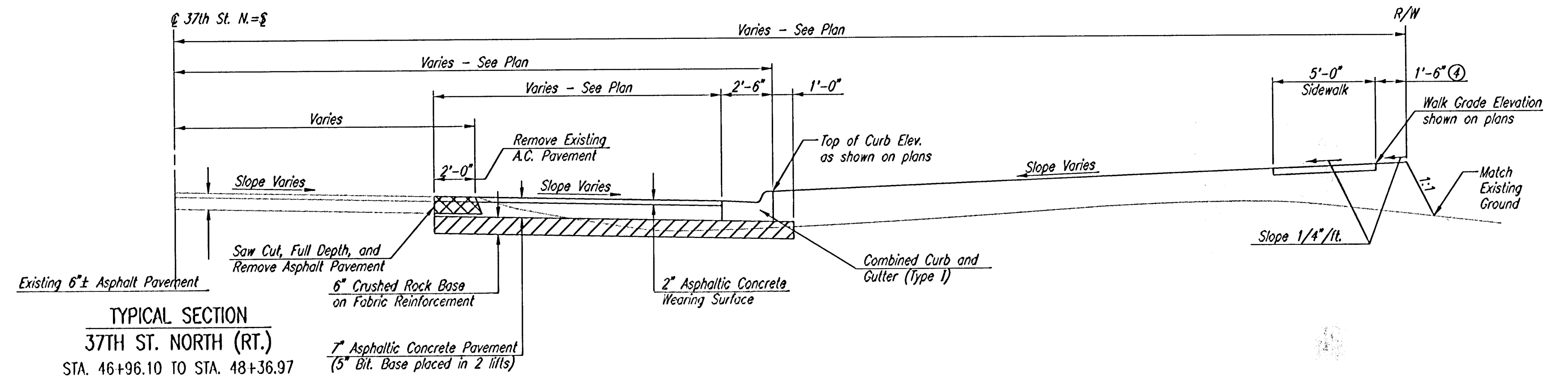
- ① Grade to Drain to Area Inlet as shown on Plan and Cross Sections
- ② Dimension varies from 1'-6" to 0'-0" between Proposed High Edge and Existing Pavement.
- ③ Saw-Cut, Remove, and Replace Surface Course as necessary to provide a neat line. This work to be subsidiary to Asphalt Pavement.
- ④ Varies from Sta. 46+82 to Sta. 47+50. See Plan.
- ⑤ Transition from Sta. 49+00 to Sta. 49+31 to Match Existing Sidewalk Elevation at Sta. 49+31.
- ⑥ Transition slope from Sta. 45+50 to Sta. 46+13.60 to Match Inlet at Sta. 46+05.



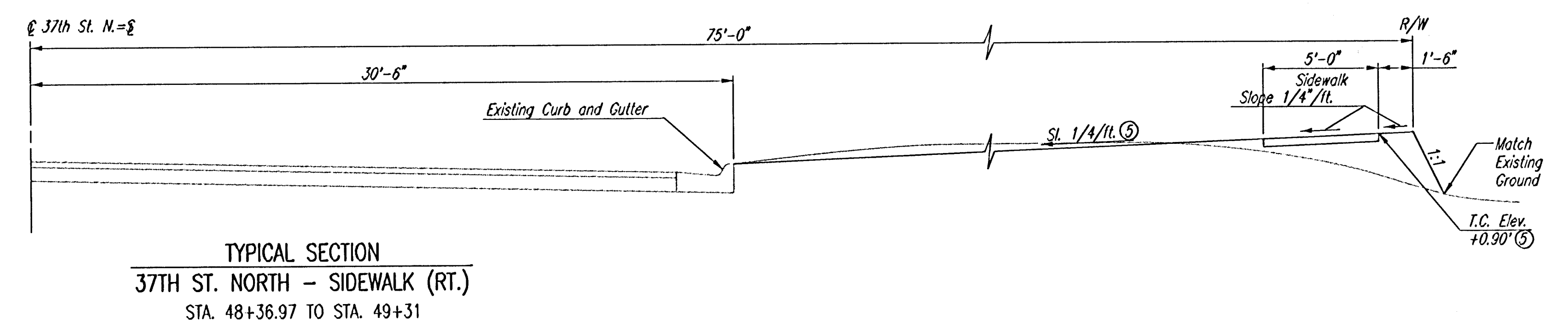
DETAIL A



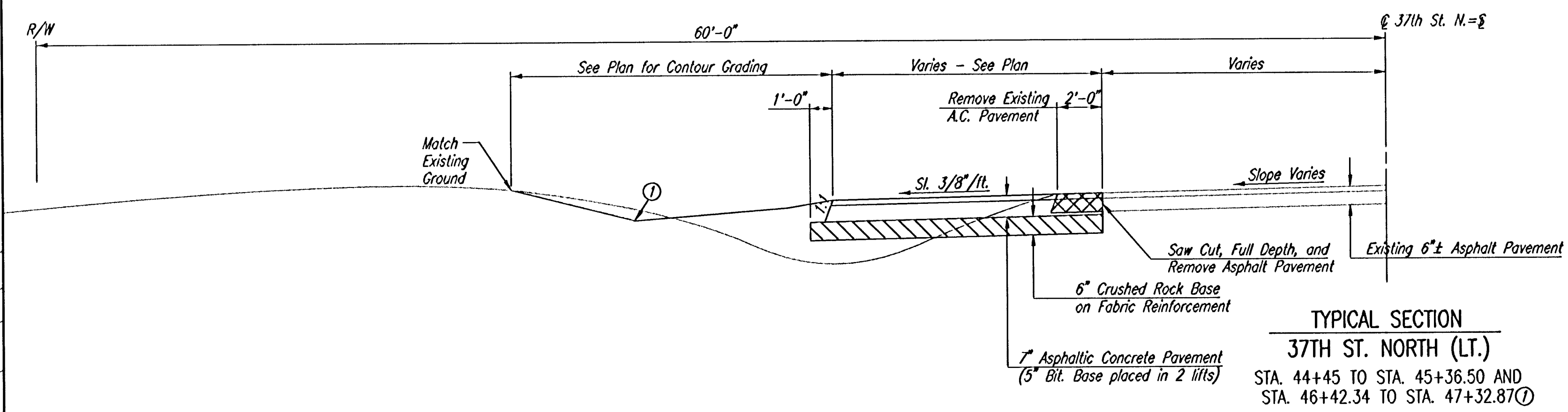
TYPICAL SECTION
37TH ST. NORTH (RT.)
STA. 42+90 TO STA. 46+13.60



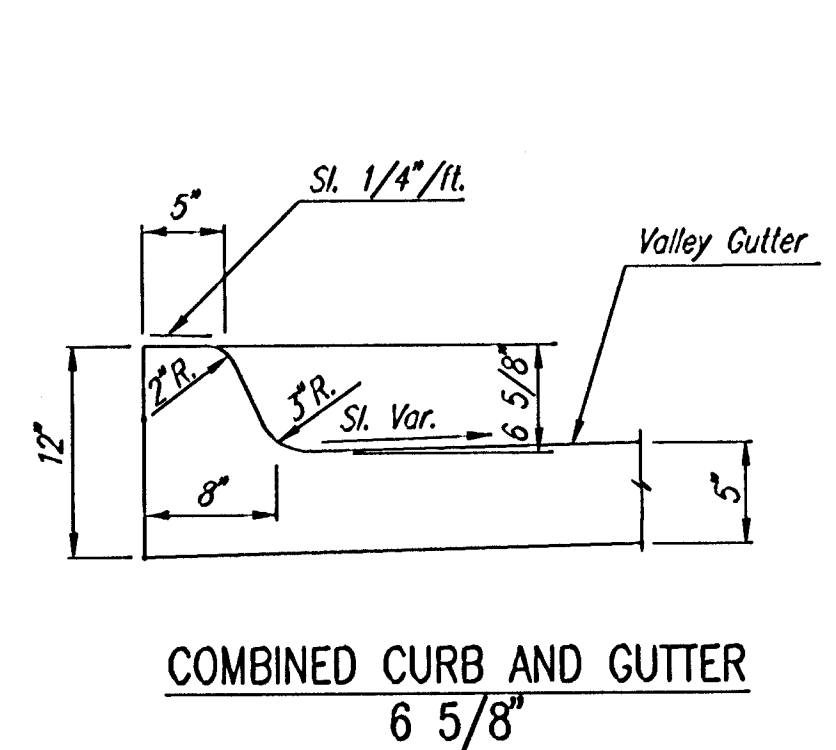
TYPICAL SECTION
37TH ST. NORTH (RT.)
STA. 46+96.10 TO STA. 48+36.97



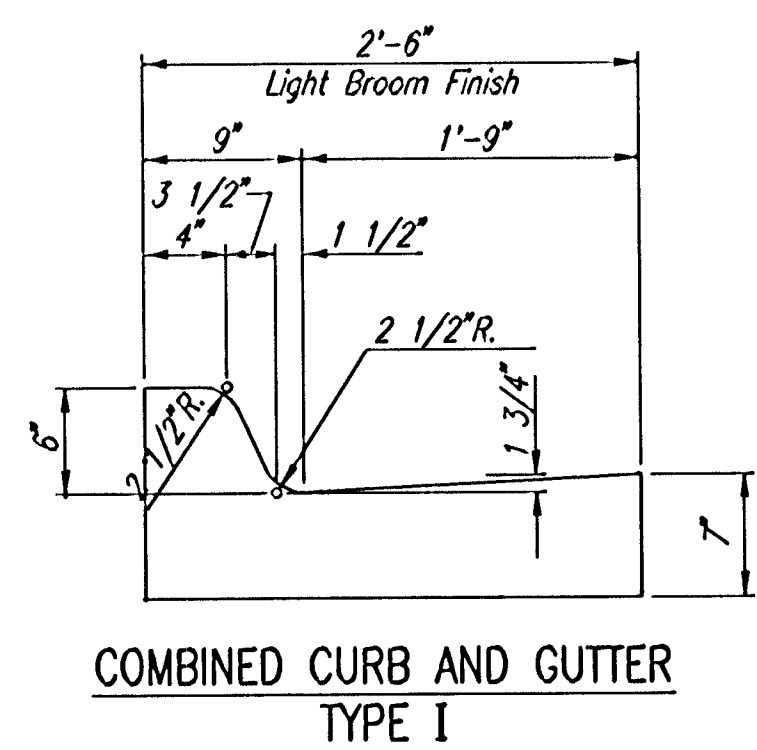
TYPICAL SECTION
37TH ST. NORTH - SIDEWALK (RT.)
STA. 48+36.97 TO STA. 49+31



TYPICAL SECTION
37TH ST. NORTH (LT.)
STA. 44+45 TO STA. 45+36.50 AND
STA. 46+42.34 TO STA. 47+32.87



COMBINED CURB AND GUTTER
6 5/8"



COMBINED CURB AND GUTTER
TYPE I

37TH STREET NORTH

TYPICAL SECTIONS

Professional Engineering Consultants, P.A.
303 S. TOPEKA • WICHITA, KANSAS 67202
316-262-2691 • FAX 316-262-3003

Designed by	DRC	Checked by	BER
Drawn by	DEP	Date	JUNE, 2001
		Job No.	01034

DSNR: BEB OPER: DEP SCALE: 1"=4'-0"
 Q1 2001 01034 000 37th TPSEC 11-14-2001 11:14:49 am