




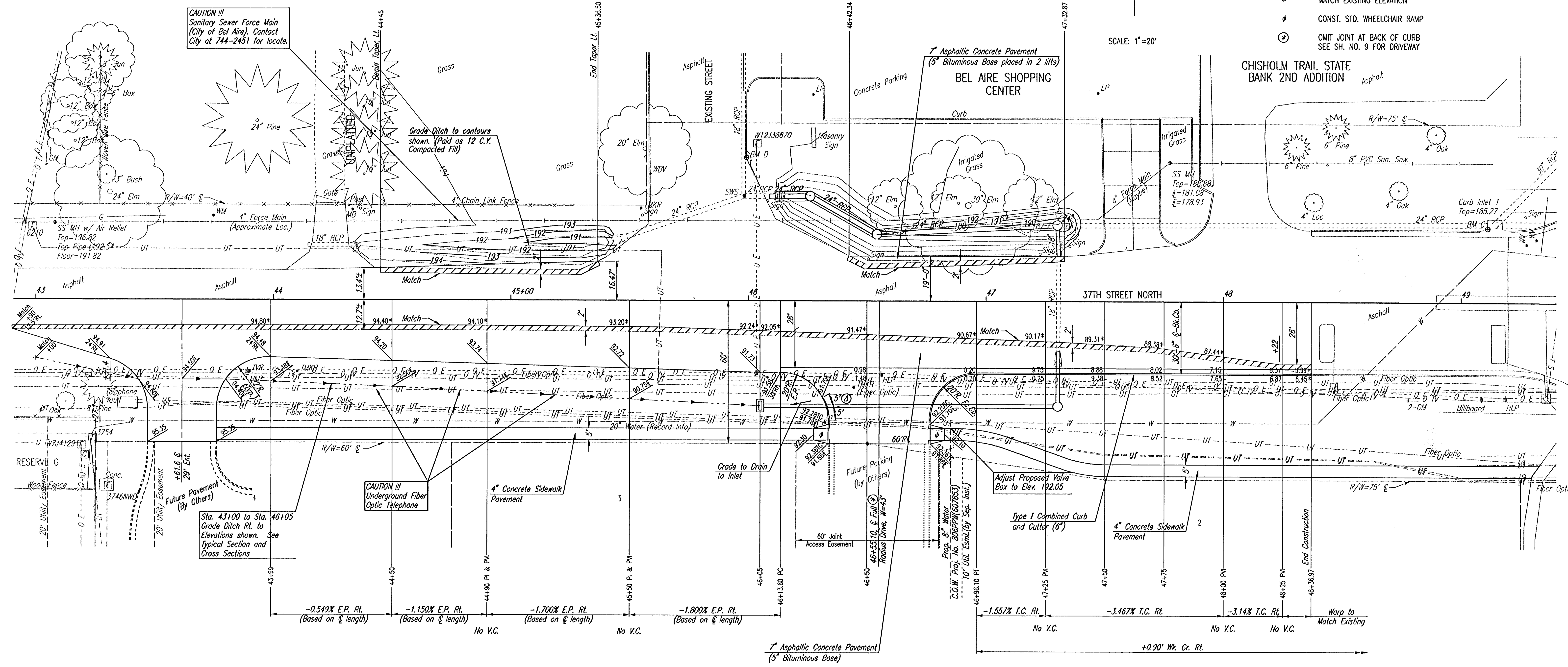


- LEGEND**
-  REMOVE EXISTING ASPHALT PAVEMENT, FULL DEPTH
 -  TRANSITION FROM 6" CURB TO NO CURB
 -  MATCH EXISTING ELEVATION
 -  CONST. STD. WHEELCHAIR RAMP
 -  OMIT JOINT AT BACK OF CURB SEE SH. NO. 9 FOR DRIVEWAY



DSAR: DEP OPER: DEP SCALE: 1"=20.00
 C:\2001\01034\000\37th\37thSTR 11-14-2001 11:32:54 am

NOTE:
 THERE ARE SEVERAL BURIED TELEPHONE AND FIBER OPTIC CABLES (SW BELL) ON THE SOUTH SIDE OF 37TH STREET NORTH. CONFLICTING CABLES WILL BE ADJUSTED BY OTHERS PRIOR TO OR DURING CONSTRUCTION. HOWEVER, THE CONTRACTOR SHALL USE CAUTION WHEN PERFORMING GRADING OPERATIONS IN THE VICINITY OF THESE CABLES.

37TH STREET NORTH
 STA. 44+45.00 TO STA. 48+36.97

Professional Engineering Consultants, P.A.
 303 S. TOPEKA • WICHITA, KANSAS 67202
 316-262-2691 • FAX 316-262-3003

Designed by	DRC	Checked by	
Drawn by	DEP	Date	AUGUST, 2001
		Job No.	01034