

CITY OF WICHITA, KANSAS

MICHAEL E. LINDEBAK, P.E., CITY ENGINEER

STREET IMPROVEMENTS

GENERAL NOTES

UNDERGROUND UTILITY SERVICE LINES AND OVERHEAD UTILITY POLE LINES ARE TO BE ADJUSTED AS NECESSARY BY OTHERS PRIOR TO CONSTRUCTION UNLESS THE PLANS SPECIFICALLY CALL FOR THEIR ADJUSTMENT BY THE CONTRACTOR. EXISTING UTILITIES AND THEIR LOCATION, AS SHOWN ON THE PLANS, REPRESENT THE BEST INFORMATION OBTAINABLE FOR DESIGN. LOCATION INFORMATION HAS BEEN OBTAINED FROM THE VARIOUS UTILITY COMPANIES AND IS EITHER FROM COMPANY RECORD DRAWINGS OR COMPANY PROVIDED FIELD LOCATIONS. THE CONTRACTOR WILL BE REQUIRED TO WORK AROUND EXISTING UTILITIES WITHIN THE RIGHT-OF-WAY WHICH DO NOT CONFLICT WITH PROPOSED CONSTRUCTION.

TREES AND SHRUBS IN PUBLIC RIGHT-OF-WAY WHICH ARE IN DIRECT CONFLICT WITH PROPOSED NEW CONSTRUCTION SHALL BE REMOVED BY THE CONTRACTOR WITH THE ENGINEER'S APPROVAL. TREES AND SHRUBS WHICH ARE NOT IN DIRECT CONFLICT WITH PROPOSED NEW CONSTRUCTION SHALL BE SAVED AND PROTECTED FROM DAMAGE.

RUBBLE FROM THE REMOVAL OF MISCELLANEOUS STRUCTURES SHALL BE DISPOSED OF ON SITES TO BE PROVIDED BY THE CONTRACTOR AND APPROVED AS NOTED BELOW.

ALL DISPOSAL SITES MUST BE APPROVED BY THE KANSAS DEPARTMENT OF HEALTH AND ENVIRONMENT. MATERIAL EITHER STOCKPILED OR DISPOSED OF IN A FLOOD PLAIN WOULD REQUIRE A KANSAS STATE BOARD OF AGRICULTURE PERMIT. ANY MATERIAL DUMPED IN WATERS OF THE UNITED STATES OR WETLANDS IS SUBJECT TO U.S. CORPS OF ENGINEERS PERMITTING REGULATIONS. ANY MATERIAL BURIED OR STOCKPILED BEYOND APPROVED CONSTRUCTION LIMITS WOULD REQUIRE ADDITIONAL ARCHEOLOGICAL INVESTIGATIONS UNLESS BURIED IN A PREVIOUSLY APPROVED BORROW LOCATION.

CONTRACTOR SHALL SATISFY HIMSELF OF SURFACE AND SUBSURFACE CONDITIONS PRIOR TO BIDDING.

TEMPORARY SURFACING MATERIAL (ROCK, ASPHALT, ETC.) MAY HAVE BEEN PLACED WITHIN STREET RIGHTS-OF-WAY FOR HAUL ROADS AND TEMPORARY ACCESS. CONTRACTOR SHALL FIELD VERIFY EXISTING CONDITIONS TO DETERMINE EXTENT, IF ANY, OF SUCH SURFACING. CONTRACTOR SHALL REMOVE SAID TEMPORARY SURFACING IN THE SAME MANNER AS NOTED ABOVE FOR RUBBLE. THIS REMOVAL SHALL BE SUBSIDIARY TO "EXCAVATION".

CONTRACTOR SHALL PROVIDE A MINIMUM FORTY-EIGHT (48) HOUR ADVANCE NOTICE (EXCLUDING WEEKENDS AND HOLIDAYS) PRIOR TO BEGINNING ANY EXCAVATION, TO KANSAS ONE-CALL SYSTEM, A UTILITY LOCATION SERVICE, AT (316) 687-2470 TO REQUEST THE FOLLOWING UTILITY COMPANIES TO LOCATE ALL EXISTING LINES WITHIN THE PROJECT AREA: K.G.S. GAS, PEOPLES NATURAL GAS, WESTAR ENERGY, SOUTHWESTERN BELL TELEPHONE, COX COMMUNICATIONS, CITY OF WICHITA SEWER MAINTENANCE AND CITY OF WICHITA WATER DEPARTMENT.

THE CONTRACTOR SHALL BE RESPONSIBLE FOR PRESERVING PROPERTY IRONS. THE CONTRACTOR WILL BE REQUIRED TO RE-ESTABLISH ANY PROPERTY IRONS WHICH ARE DAMAGED OR DESTROYED BY HIS CONSTRUCTION OPERATIONS. SUCH IRONS SHALL BE RE-ESTABLISHED BY A LICENSED LAND SURVEYOR IN ACCORDANCE WITH STATE LAWS.

THE WATER DEPARTMENT SHALL FIELD LOCATE WATER VALVES ONE TIME DURING CONSTRUCTION WHEN REQUESTED BY THE CONTRACTOR. IT SHALL BE THE CONTRACTOR'S RESPONSIBILITY TO PRESERVE SUCH FIELD LOCATIONS DURING THE CONSTRUCTION PROCESS. WATER VALVES, WATER VALVE BOXES OR FIRE HYDRANTS DAMAGED DURING CONSTRUCTION SHALL BE REPAIRED BY THE CONTRACTOR AT HIS OWN EXPENSE.

THE CONTRACTOR SHALL ADJUST WATER VALVE BOXES AS DIRECTED BY THE ENGINEER. THIS WORK TO BE SUBSIDIARY TO OTHER BID ITEMS.

INLET HOOKUPS SHALL BE BID PER EACH REGARDLESS OF INLET SIZE.

THIS PROJECT DOES NOT INCLUDE ANY PROVISIONS FOR CONSTRUCTION OF DRIVEWAYS.

THE CONTRACTOR SHALL APPLY TEMPORARY SEED AND MULCH TO ALL UNPAVED AREAS DISTURBED BY HIS CONSTRUCTION OPERATIONS IN ACCORDANCE WITH THE CITY OF WICHITA SPECIFICATIONS. THIS WORK SHALL BE PAID FOR AT THE CONTRACT LUMP SUM PRICE BID FOR "PROJECT SEEDING".

EROSION CONTROL (BMP'S)
THE CONTRACTOR SHALL INSTALL AND/OR MAINTAIN EROSION CONTROL METHODS AS SPECIFIED ON SHEET 30. THE FOLLOWING QUANTITIES ARE ESTIMATED, AND SHOULD BE CONSIDERED THE MINIMUM EFFORT REQUIRED. INSTALLATION OF THESE BMP'S DOES NOT RELIEVE THE CONTRACTOR OF THE RESPONSIBILITY OF ABATING SOIL EROSION.

INLET PROTECTION 5 EACH
SILT FENCE BARRIER 1100 LF
CONSTRUCTION ENTRANCE 1 EACH
BACK OF CURB PROTECTION 4550 LF

LOT GRADING AND COORDINATION
THE CONTRACTOR SHALL BE REQUIRED TO WORK AROUND HOUSE CONSTRUCTION CURRENTLY UNDERWAY AND COORDINATE WITH THE HOME BUILDERS AND DEVELOPER ON ACCESS AND LOT GRADING ISSUES.

INDEX OF SHEETS

1. TITLE SHEET
2. KEY MAP
3. PLAT
- 4.-5. TYPICAL SECTIONS
- 6.-7. PAVING PLAN - TIPPERARY
- 8.-9. PAVING PLAN - BRACKEN
10. PAVING PLAN - TIPPERARY COURT
11. PAVING PLAN - BRACKEN COURT
12. PAVING PLAN - BRACKEN CIRCLE
13. VALLEY CUTTER PLANS
14. VALLEY CUTTER DETAILS
15. MISCELLANEOUS PAVING DETAILS
16. SWS LINE NO. 1
- 17.-18. SWS LINE NO. 3
19. SWS LINE NOS. 3 AND 4
20. STD TYPE 1A CURB INLET (6"x5'-0")
21. STD TYPE 1A CURB INLET (6"x10'-0")
22. TYPE C INLET DETAILS
23. STD 2"x2" AREA INLET DETAILS
24. STD AREA INLET DETAILS
25. MANHOLE FRAME AND COVER DETAILS
- 26.-30. EROSION CONTROL (BMP'S)
31. FOUR CORNER GRADING PLAN
32. BERM CONTOUR GRADING PLAN
33. SIGNING DETAILS
- 34.-55. CROSS SECTIONS

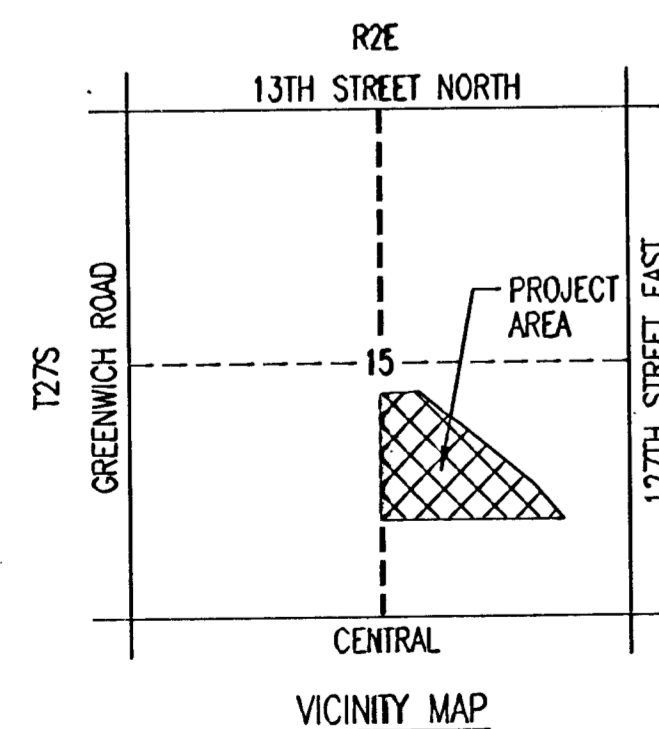
PROJECT SURVEY CONTROL

- BM E-2: RAILROAD SPIKE IN NORTH FACE OF 12" HEDGE TREE SOUTH OF NORTH GAP IN EAST HEDGE ROW NEAR SOUTHEAST CORNER OF LOT 13, BLOCK 4 OF BALTHROP ADDITION. ELEV.=1,375.00
- BM 4-1: T POST SET 6"± BELOW SURFACE, 10"± EAST OF NORTHWEST CORNER, LOT 46, BLOCK 1 BALTHROP 4TH ADDITION. ELEV.=1,355.70
- BM 4-2: T POST SET 6"± BELOW SURFACE, 10"± SOUTH OF POINT OF CURVATURE OF CUL-DE-SAC LOT 30, BLOCK 1 OF BALTHROP 4TH ADDITION. ELEV.=1,365.28
- BM 4-3: T POST SET 6"± BELOW SURFACE, 10"± EAST OF POINT OF CURVATURE, LOT 7, BLOCK 2 OF BALTHROP 4TH ADDITION. ELEV.=1,361.37

EARTHWORK

EXCAVATION 22,274 CU. YDS.
COMPACTED FILL 947 CU. YDS.
PROJECT LENGTH = 2233.19 LIN. FT.

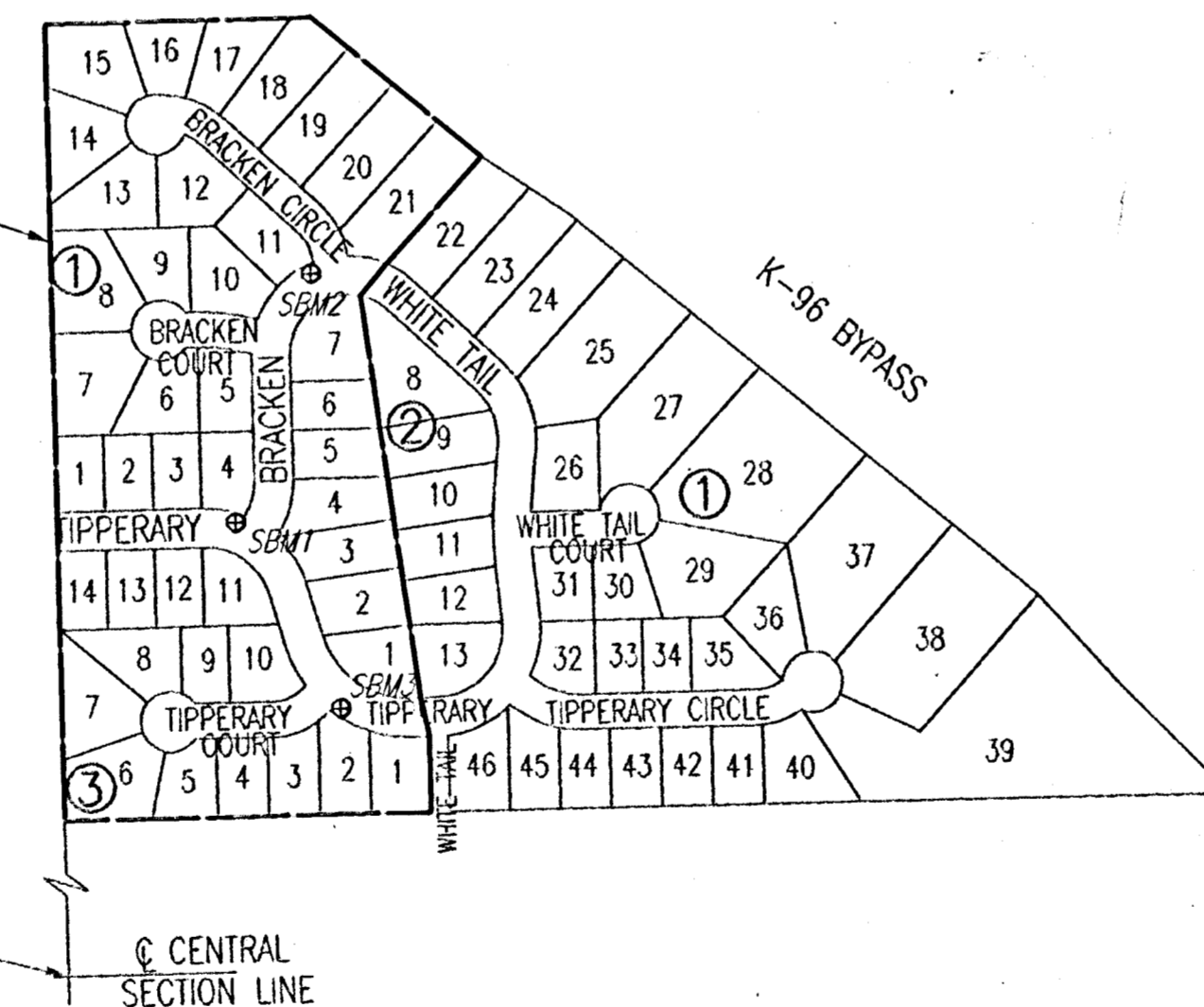
CONTRACTOR SHALL SEE FOUR CORNER GRADING PLAN, BERM CONTOUR GRADING PLAN, AND CROSS SECTIONS FOR GRADING WITHIN THE IMPROVEMENT DISTRICT. ALL EXCAVATED MATERIAL SHALL REMAIN ON SITE, THE CONTRACTOR SHALL BE RESPONSIBLE FOR DISPOSING AT ANY SPOIL POLES REMAINING FROM STORM SEWER (7X4 RCB), AND SANITARY SEWER CONSTRUCTION.



TIPPERARY - FROM THE W.L. OF LOT 1, BLOCK 1 TO THE E.L. LOT 1, BLOCK 3
BRACKEN - FROM THE N.L. OF TIPPERARY TO THE SOUTHERLY LINE OF LOT 21, BLOCK 1
BRACKEN COURT - SERVING LOTS 5 THRU 10, BLOCK 1
BRACKEN CIRCLE - SERVING LOTS 11 THRU 21, BLOCK 1
TIPPERARY COURT - SERVING LOTS 3 THRU 10, BLOCK 3
SIDEWALK - ON THE NORTH SIDE OF TIPPERARY AND THE EAST SIDE OF BRACKEN

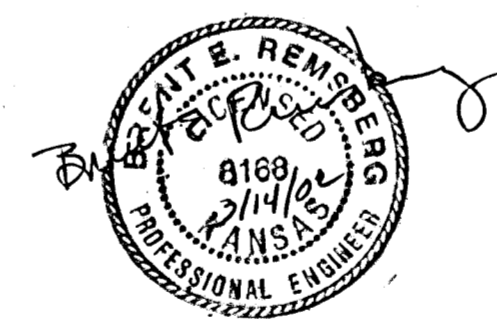
IN BALTHROP 4TH ADDITION CITY OF WICHITA PROJECT NO. 472-83468 OCA NO. 765721

IMPROVEMENT DISTRICT
BOUNDARY



S.W. Corner S.E. 1/4
Sec. 15, T27S, R2E
of the 6th P.M.

SCALE: 1" = 300'



Street Construction Sequence

The street contractor (Project No. 472-83468) shall coordinate his work with the construction of proposed waterlines, sanitary sewers, and the 7"x4" RCB such that all construction can proceed concurrently. Site grading and storm sewer shall be accomplished such that upon completion of the RCB to Sta 22+00 the street subgrade may be immediately accomplished. In this regard, it is expected that the proposed storm sewer construction required to clear street construction be completed as soon as construction of the connection points at the RCB is constructed.

Substantial completion of the street construction, that is, easement grading, storm sewer, and all paving items except the top 2" surface course, shall be completed by June 15, 2002. All remaining items of work shall be completed by July 1, 2002.

Sanitary Sewer Construction Sequence

The sanitary sewer contractor (Project No. 468-83390) shall coordinate his work with the construction of proposed waterlines, streets, and the 7"x4" RCB such that all construction can proceed concurrently. The Contractor shall construct Line 1 from MH 1 to MH 9, Line 3 from MH 7 to MH 16, and Line 4 from MH 8 to MH 17. Upon completion of these portions of the sewer including testing, the Contractor shall complete the remainder of the project. The proposed crossings under the 7"x4" RCB at RCB Sta 14+30, Sta 17+90, Sta 20+30, and Sta 22+90 shall be accomplished without causing delay to the construction of the RCB.

Completion of the portions of Line 1, 3, and 4 as previously noted shall be accomplished by May 15, 2002. All remaining items of work shall be accomplished by June 15, 2002.

Waterline Construction Sequence

The waterline contractor (Project No. 448-89654) shall coordinate his work with the construction of proposed sanitary sewer, streets, and the 7"x4" RCB such that all construction can proceed concurrently. The proposed crossings under the 7"x4" RCB at White Tail, Bracken, and Bracken Circle shall be accomplished without causing delay to the construction of the RCB.

Waterline construction and acceptance shall be accomplished by May 15, 2002.

RCB Construction Sequence

The RCB contractor (Project No. 468-83392) shall coordinate his work with the construction of proposed waterlines, streets, and sanitary sewer such that all construction can proceed concurrently.

Substantial completion, that is, all work required to clear street construction south of Sta 22+00 shall be accomplished by June 1, 2002. All remaining items of work shall be accomplished by June 15, 2002.

FEBRUARY 2002

PLANS PREPARED BY

PROFESSIONAL ENGINEERING CONSULTANTS, P.A.
ENGINEERS
WICHITA, KANSAS

NO.	STREET AND STATION	FROM &	DESCRIPTION	ELEVATION
1	Tipperary Sta. 12+96.86	17' LEFT	SOUTH END RETURN, NORTH SIDE STREET	-----
2	Bracken Sta. 24+70.50	17' LEFT	WEST END RETURN, NORTH SIDE STREET	-----
3	Tipperary Sta. 16+59.31	17' RIGHT	EAST END RETURN, SOUTH SIDE STREET	-----

THE COST OF THE BENCH MARK DISC, INCLUDING INSTALLATION, SHALL BE INCIDENTAL TO THE CURB.