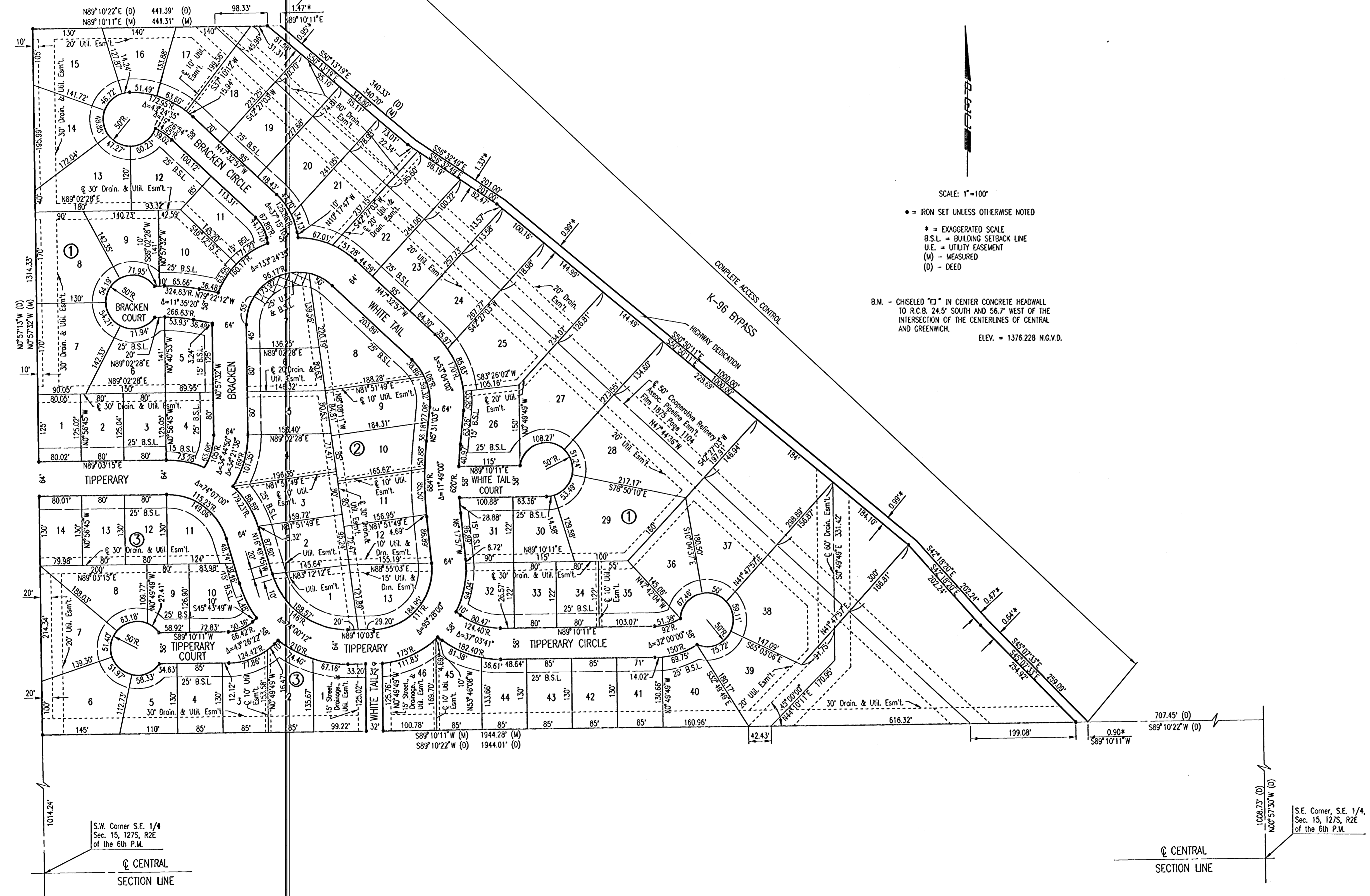


PROJECT NO.	SHEET NO.	TOTAL SHEETS
472-83468	3	55

# BALTHROP 4TH ADDITION

TO WICHITA, SEDGWICK COUNTY, KANSAS



DSNR: BER OPER: SAD SCALE: 1"=100.00  
 Q:\2001\01545\000\PLAT\_03-13-2002\_04:07:39.plt

BALTHROP 4TH ADDITION

## PLAT

**Professional Engineering Consultants, P.A.**  
 303 S. TOPEKA • WICHITA, KANSAS 67202  
 316-262-2691 • FAX 316-262-3003

Designed by	Checked by
Drawn by DEP	Date FEB. 2002
Job No. 01545	