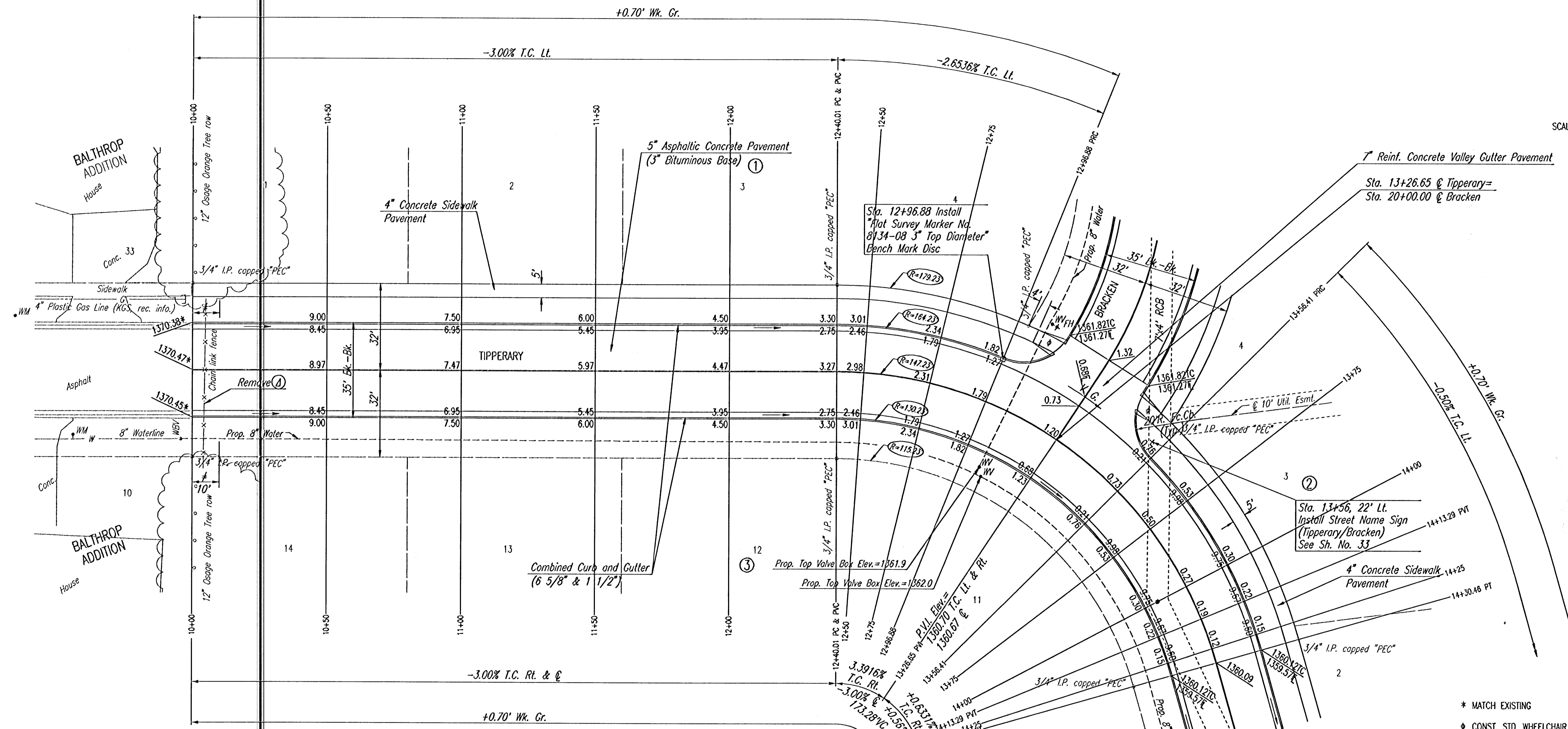
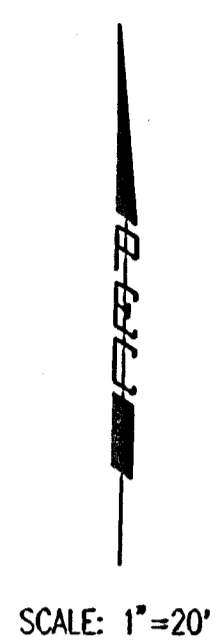


WATER VALVE BOX ELEVATIONS			
STREET	STATION	OFFSET	PROPOSED ELEVATION
TIPPERARY	13+05.10	23.0'RL	1361.9
TIPPERARY	13+07.55	25.5'RL	1362.0



Δ=74°07'00" D=39°54'33" R=147.23' L=190.45' T=111.18' E=37.26'

CURVE DATA BASED ON Δ RADIUS Δ/2=37°03'30"

STATION	ARC LENGTH	FACE CURB LENGTH		CHORD LENGTH		DEFLECTION ANGLE	TOTAL DEFLECTION
		LEFT CURB	RIGHT CURB	8' OFF LEFT FACE CURB	8' OFF RIGHT FACE CURB		
12+40.01						0°00'00"	0°00'00"
12+50	9.99'	10.94'	9.04'	11.48'	8.50'	1°56'38"	1°56'37"
12+75	25.00'	27.38'	22.62'	28.70'	21.24'	4°51'52"	6°48'29"
12+96.88	21.88'	23.96'	19.80'	25.13'	18.59'	4°15'27"	11°03'56"
13+26.65	29.77'	32.60'	26.94'	34.16'	25.28'	5°47'33"	16°51'30"
13+56.41	29.76'	32.59'	26.93'	34.15'	25.27'	5°47'26"	22°38'56"
13+75	18.59'	20.36'	16.82'	21.35'	15.80'	3°37'02"	26°15'58"
14+00	25.00'	27.38'	22.62'	28.70'	21.24'	4°51'52"	31°07'50"
14+25	25.00'	27.38'	22.62'	28.70'	21.24'	4°51'52"	35°59'42"
14+30.46	5.46'	5.98'	4.94'	6.28'	4.65'	1°03'48"	37°03'30"
TOTAL	190.45'	208.56'	172.34'				

Defl./ft.=11.874980 min.

- * MATCH EXISTING
- ◆ CONST. STD. WHEELCHAIR RAMP
- ≠ TRANSITION FROM EXISTING CURB AND GUTTER TO 6 5/8" CURB AND GUTTER
- Δ INCLUDE AS PART OF "SITE CLEARING"

BALTHROP 4TH ADDITION

TIPPERARY
STA. 10+00.00 TO STA. 14+30.46

Professional Engineering Consultants, P.A.
303 S. TOPEKA • WICHITA, KANSAS 67202
316-262-2691 • FAX 316-262-3003

Designed by	BER	Checked by	
Drawn by	DEP	Date	FEB. 2002
		Job No.	01545

DSNR: DEP OPER: S4D SCALE: 1"=20.00
 Q:\2001\01545\001\TIPPERARY-14.DWG 03-13-2002 04:06:33 pm