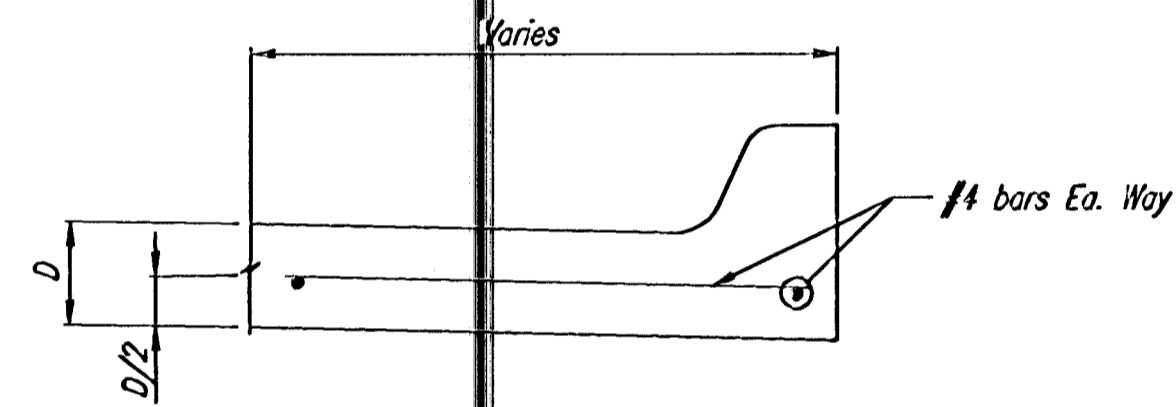
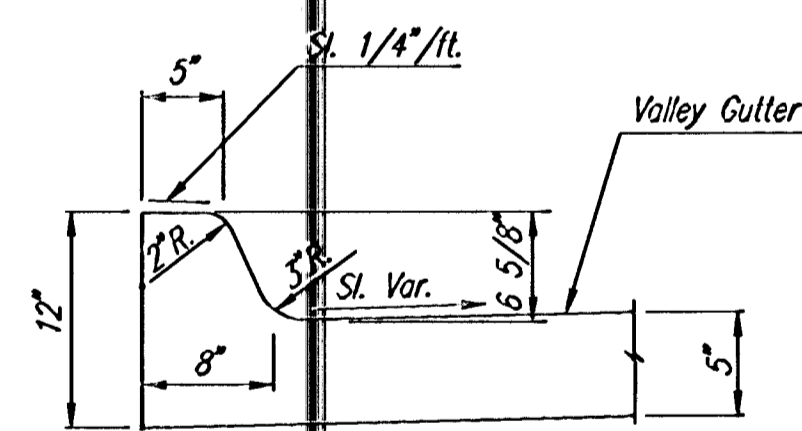


SECTION A-A

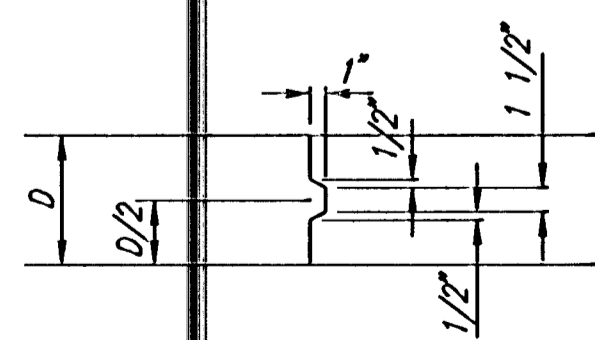
NOTE: OMIT REINFORCING MESH AT ALL JOINTS  
 NOTE: ALL CONCRETE VALLEY GUTTER REINFORCEMENT SHALL BE ADEQUATELY SUPPORTED BY BAR CHAIRS IN THE REQUIRED POSITION UNLESS APPROVED OTHERWISE BY THE ENGINEER.



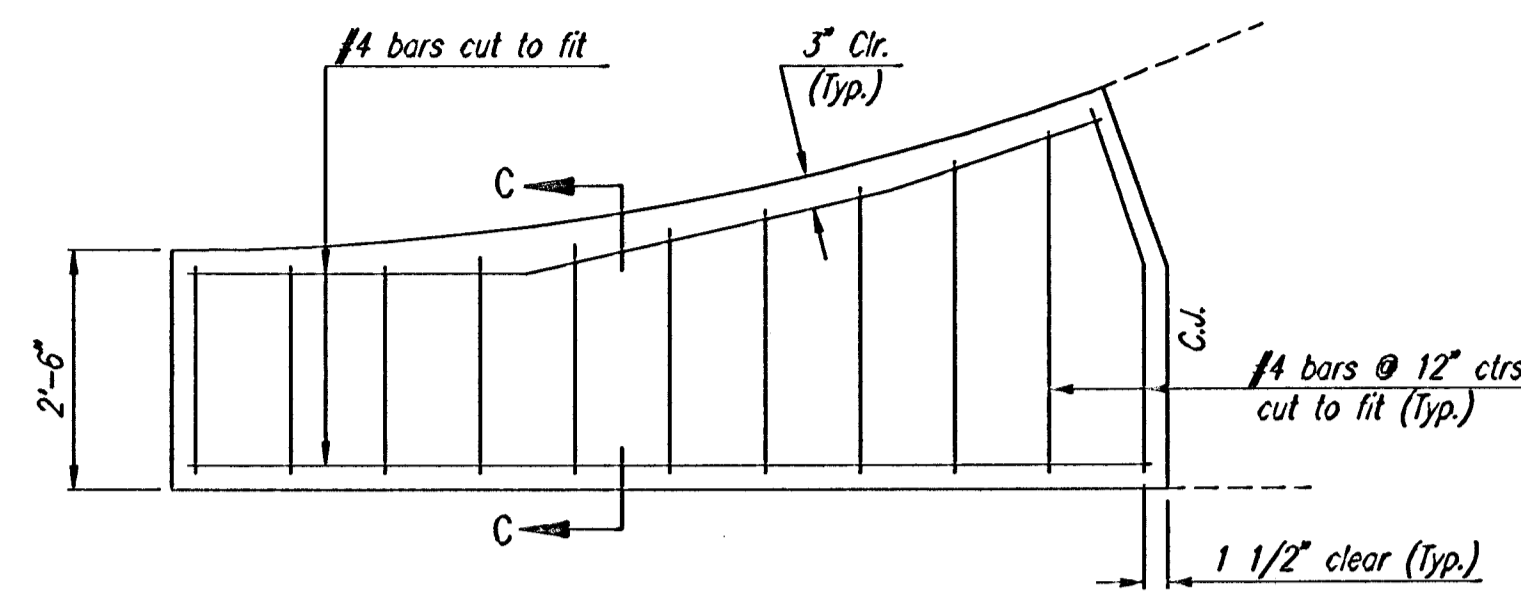
SECTION C-C



DETAIL B

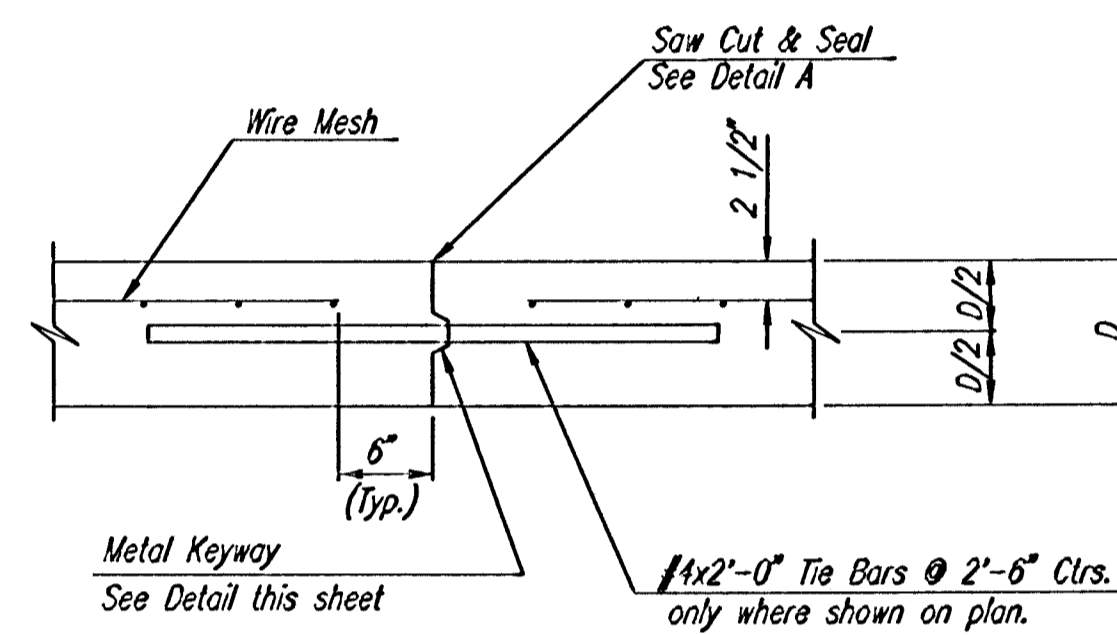


KEYWAY DETAIL

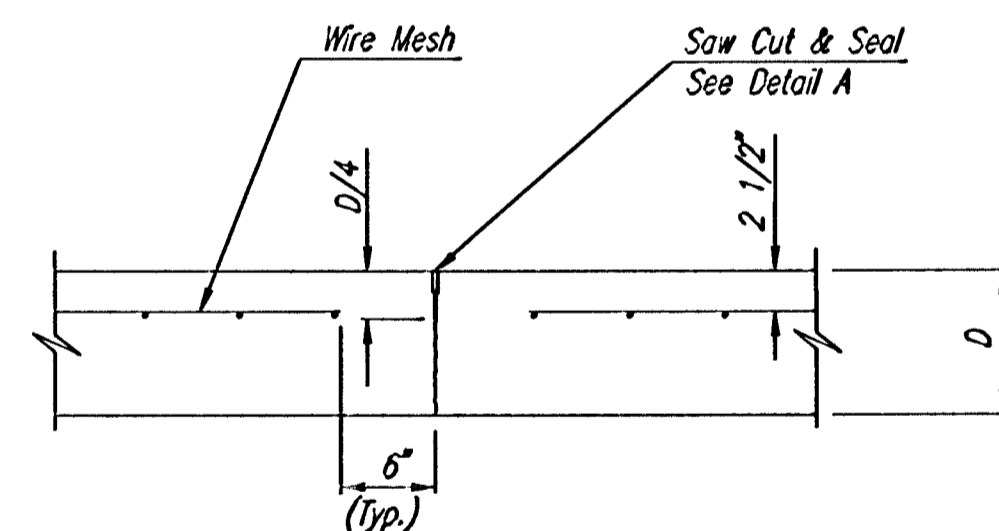


WING REINFORCING DETAIL

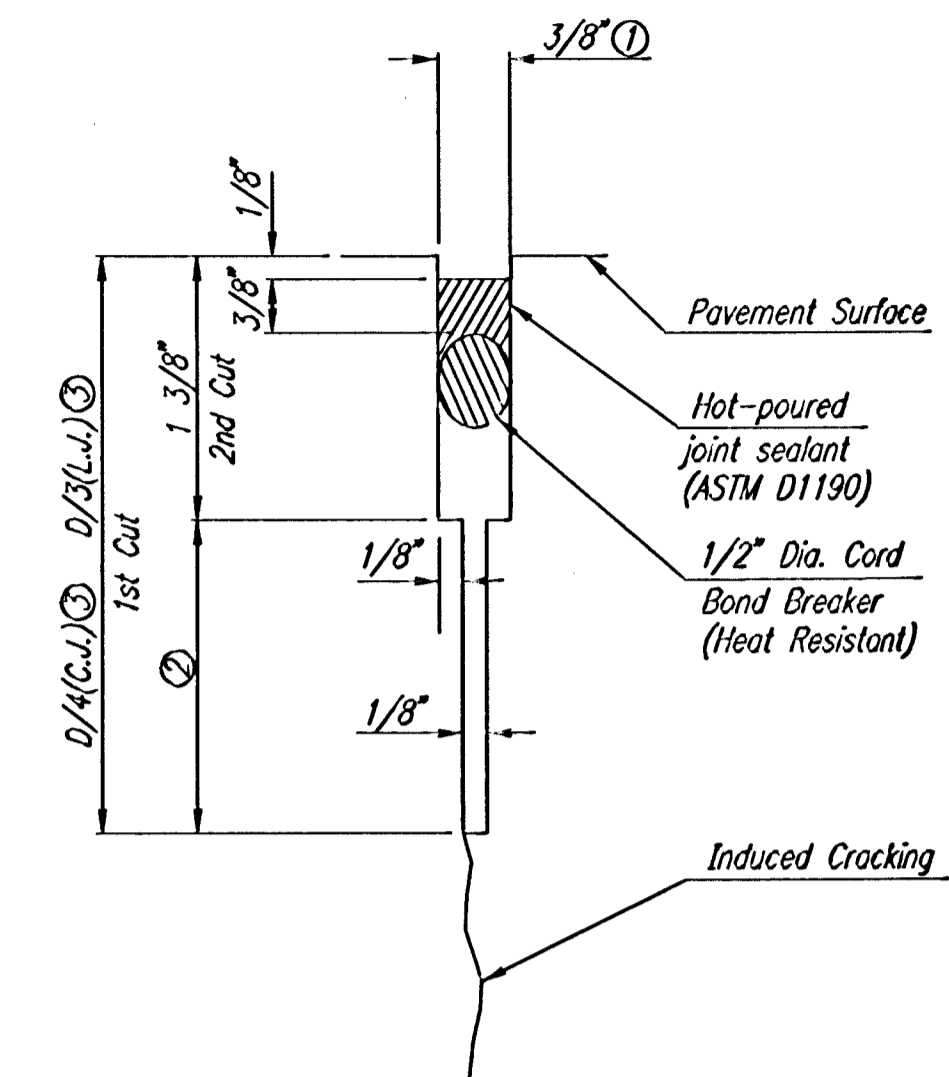
NOTE: OMIT WIRE FABRIC REINFORCING IN THIS SECTION.



LONGITUDINAL CONSTRUCTION JOINT DETAIL  
 REINFORCED PAVEMENT  
 (TRANSVERSE SECTION)  
 (ALTERNATE L.J.)

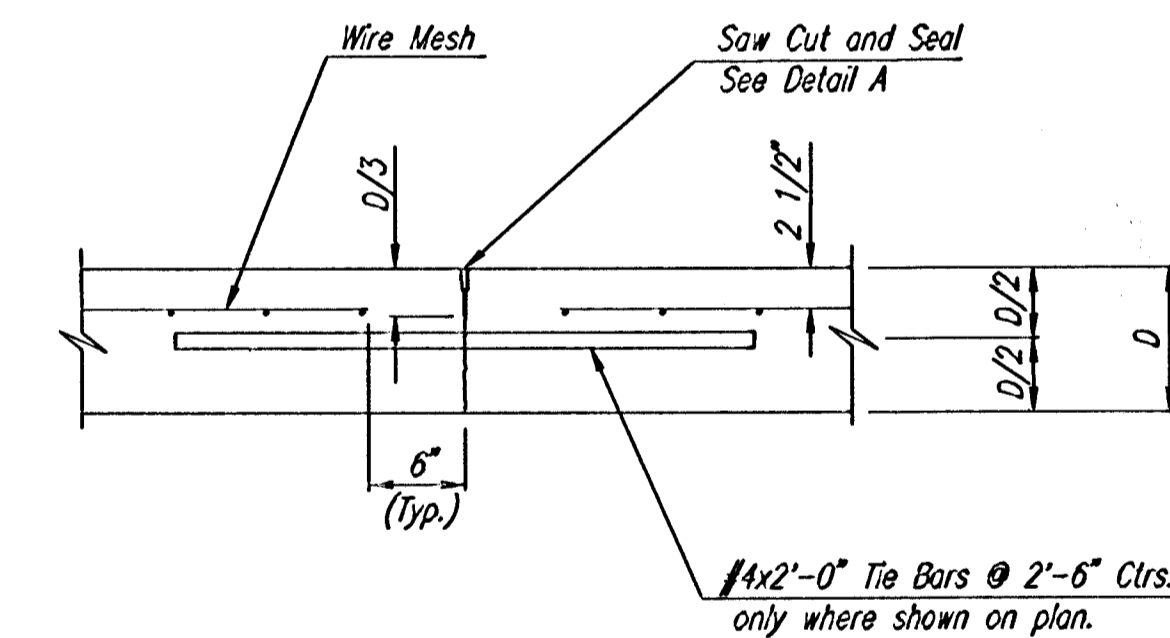


CONTRACTION JOINT DETAIL  
 REINFORCED PAVEMENT  
 (C.J.)



DETAIL A

- ① To be accomplished in 2 cuts for Longitudinal Joints and Contraction Joints. Initial cut to be 1/8" wide.
- ② Eliminate bottom of cut when metal keyway is used as part of Longitudinal or Transverse Construction Joint and at Doweled Construction Joint Locations.
- ③ 1 1/2" Minimum



LONGITUDINAL JOINT DETAIL  
 REINFORCED PAVEMENT  
 (TRANSVERSE SECTION)  
 (L.J.)

DSNR: BER OPER: SAO SCALE: 1=10.00  
 C:\2001\01545\000\VALGUTD1L 03-13-2002 04:01:15 pm

BALTHROP 4TH ADDITION

VALLEY GUTTER DETAILS



Professional Engineering Consultants, P.A.  
 303 S. TOPKA • WICHITA, KANSAS 67202  
 316-262-2691 • FAX 316-262-3003

Designed by	BER	Checked by	
Drawn by	DEP	Date	FEB. 2002
		Job No.	01545