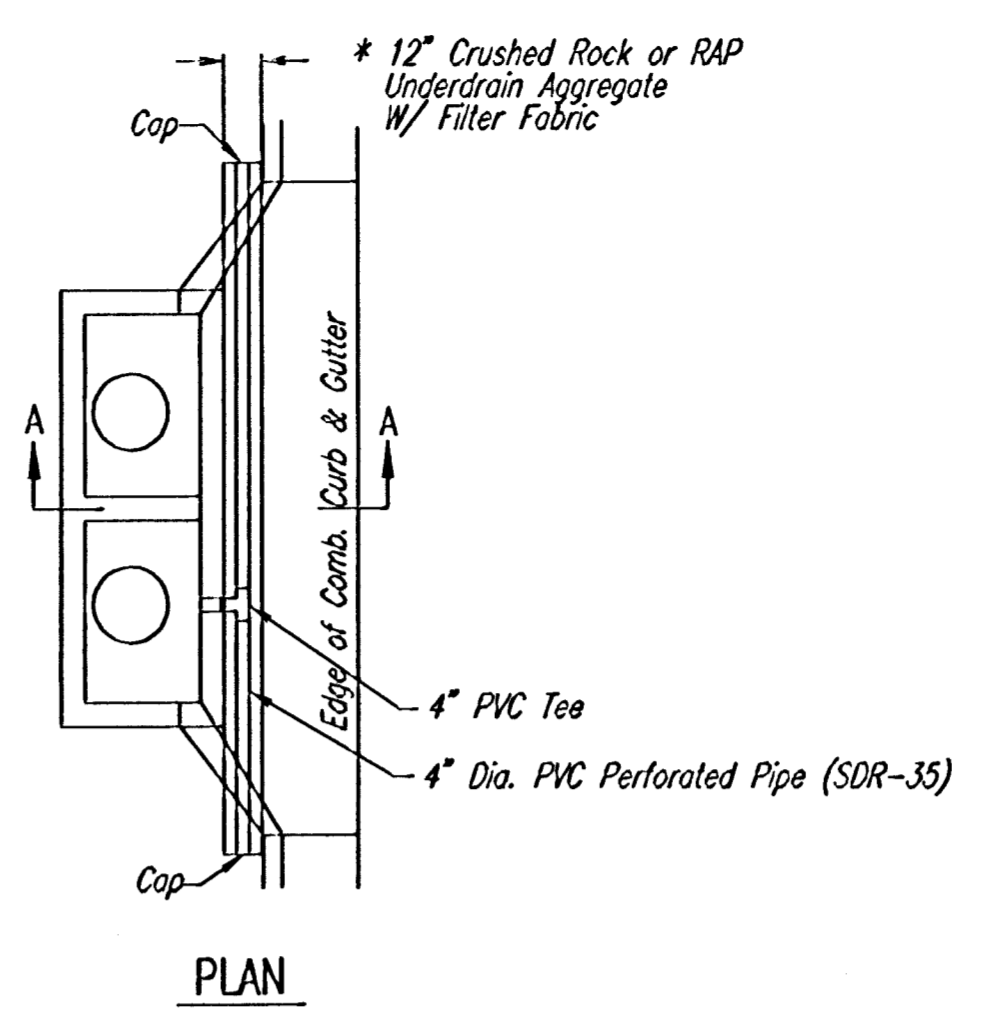


COMPACTED FILL DETAIL
WHERE SIDEWALK IS CONSTRUCTED
(See Plan Sheets for Locations)



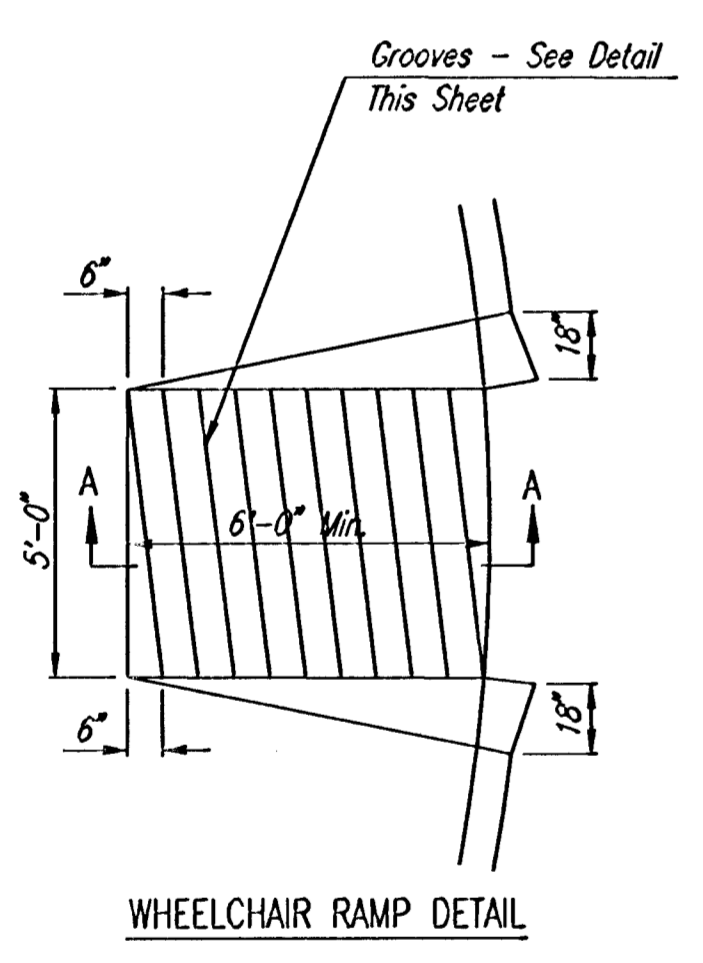
* UNDERDRAIN AGGREGATE
PERCENT OF AGGREGATE RETAINED

1"	0
3/4"	0-10
3/8"	45-80
1/4"	90-100
1/8"	95-100

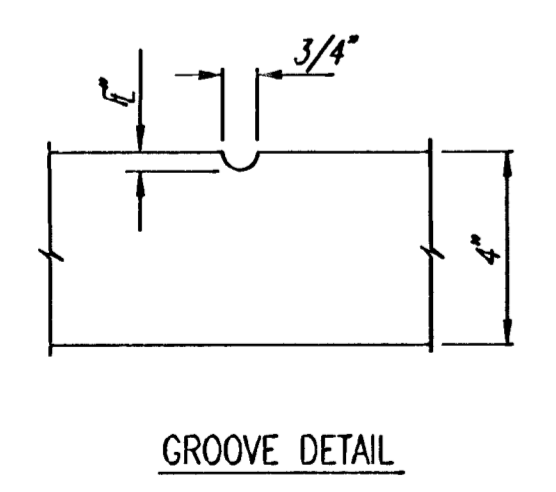
ROCK QUALITY SHALL CONFORM TO THE REQUIREMENTS SPECIFIED BY THE KDOT 1990 EDITION STANDARD SPECIFICATION SUBSECTION 1102 FOR DURABILITY CLASS I.

PAVEMENT UNDERDRAIN LOCATIONS

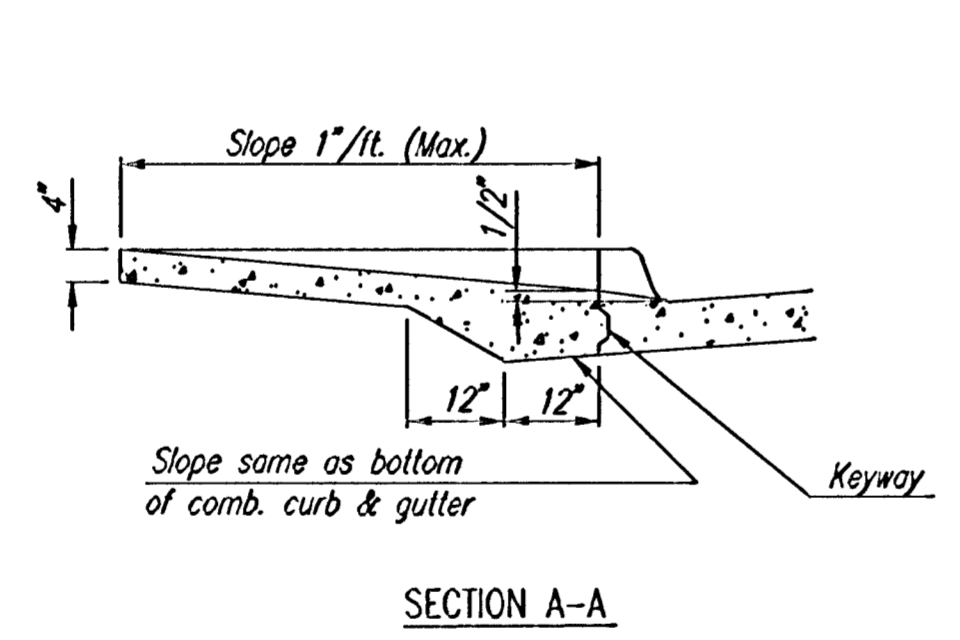
STREET	STATION	SIDE
TIPPERARY	14+78.61	RT.
TIPPERARY	17+57.17	RT.
TIPPERARY	17+63.17	LT.
BRACKEN	21+96.63	LT. & RT.



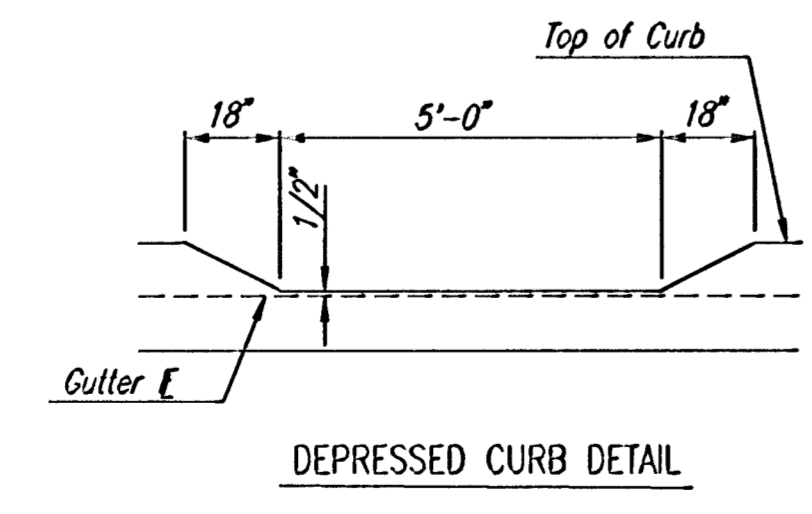
WHEELCHAIR RAMP DETAIL



GROOVE DETAIL

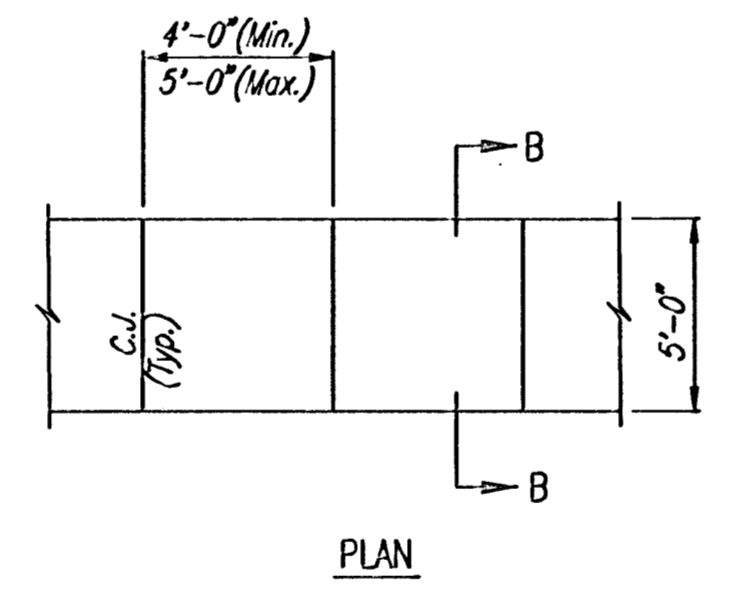


SECTION A-A

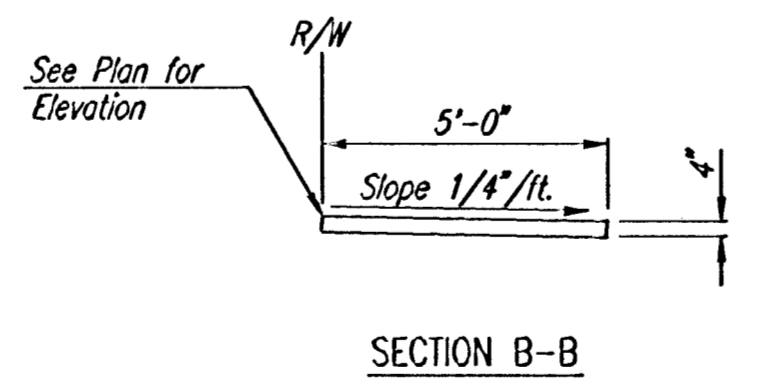


DEPRESSED CURB DETAIL

TYPICAL WHEELCHAIR RAMP DETAILS

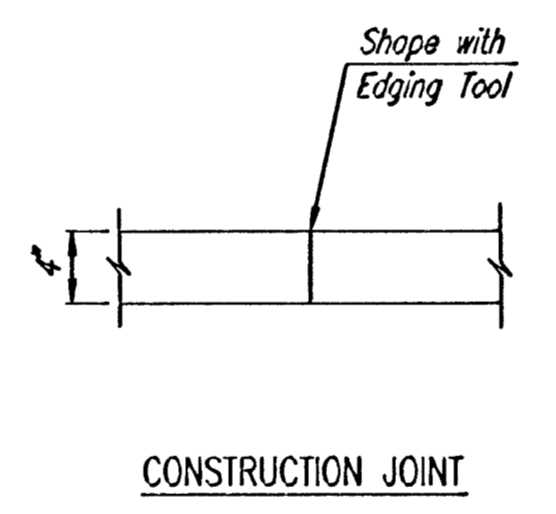


PLAN

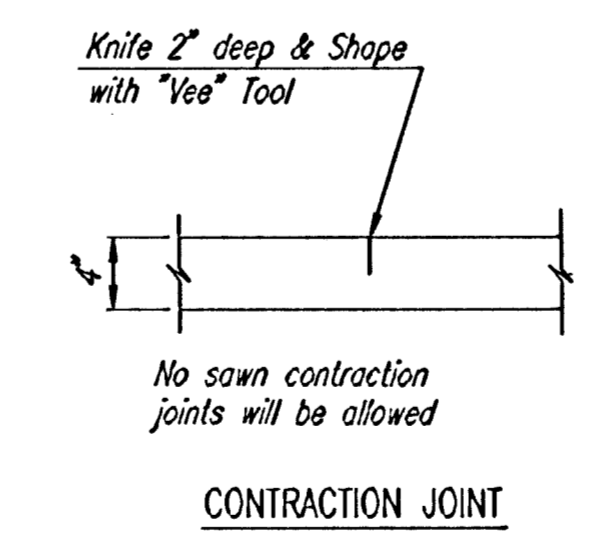


SECTION B-B

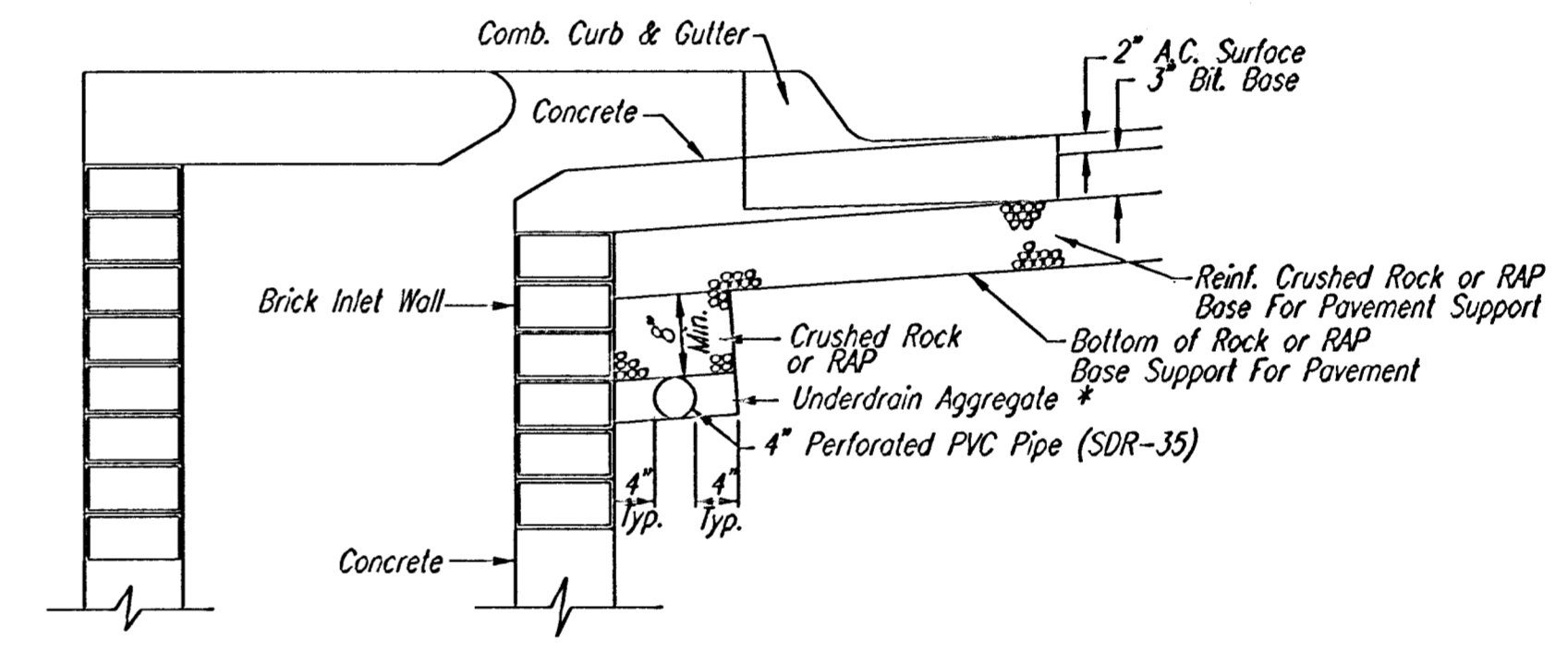
4" WALK DETAILS



CONSTRUCTION JOINT



CONTRACTION JOINT



(Min. 16 Perforations Per Lin. Ft. @ 1/4" Dia.)
Perforations to be on Bottom Half

SECTION A-A

PAVEMENT UNDERDRAIN DETAIL

NOTE: PLACE 4" PVC PERFORATED PIPE AT ALL DRAINAGE SUMP LOCATION
COST OF UNDERDRAIN SYSTEM TO BE INCIDENTAL TO THE REINFORCED CRUSHED ROCK OR REINFORCED RECYCLED ASPHALT PAVEMENT (RAP) BASE.
INLET TYPE MAY VARY FROM THAT SHOWN.

BALTHROP 4TH ADDITION

MISCELLANEOUS PAVING DETAILS

Professional Engineering Consultants, P.A.
303 S. TOPEKA • WICHITA, KANSAS 67202
316-262-2691 • FAX 316-262-3003

Designed by	BER	Checked by	
Drawn by	DEP	Date	FEB. 2002
		Job No.	01545

DSNR:BER OPER: S40 SCALE: 1=10.00
 C:\2001\01545\000\MISC01L_03-13-2002_04:00:49.pm