

Sta. 40+22.10, SWS Line No. 1A=
 @ Tipperary Sta. 17+57.17, 20.17' Rt.
 Const. Std. Type 1A Curb Inlet
 L=5'-0", W=3'-0"
 Top Elev.=1358.46
 I=Out=1352.35
 See Sh. No. 20

Sta. 10+29.00, SWS Line No. 1=
 @ Tipperary Sta. 17+63.17, 20.17' Lt.
 Const. Std. Type 1A Curb Inlet
 L=10'-0", W=3'-0"
 Top Elev.=1358.49
 Install 19.19 L.F. 30" RCP (N)
 See Sh. No. 21

Sta. 13+18.15, SWS Line No. 1=
 Const. Std. 2'x2' Area Inlet
 L=2'-0", W=2'-0"
 Top Elev.=1359.00
 Install 169.81 L.F. 15" RCP (N)
 See Sh. No. 23

Sta. 40+09.95, SWS Line No. 1A=
 Connect to Exist. 18" RCP Stub 3/4" I.P. capped "PEC"
 Install 12.15 L.F. 18" RCP(SE)
 I=1352.30

Sta. 10+00.00, SWS Line No. 1=
 Sta. 40+00.00, SWS Line No. 1A=
 @ Tipperary Sta. 17+74.53, 6.52' Rt.

Sta. 10+09.30, SWS Line No. 1=
 Connect to Exist. 30" RCP Stub
 Install 19.70 L.F. 30" RCP(N)

Sta. 10+48.19, SWS Line No. 1=
 Const. Std. Area Inlet
 L=4'-0", W=2'-0"
 Top Elev.=1358.00
 Install 111.83 L.F. 30" RCP (N)
 See Sh. No. 24

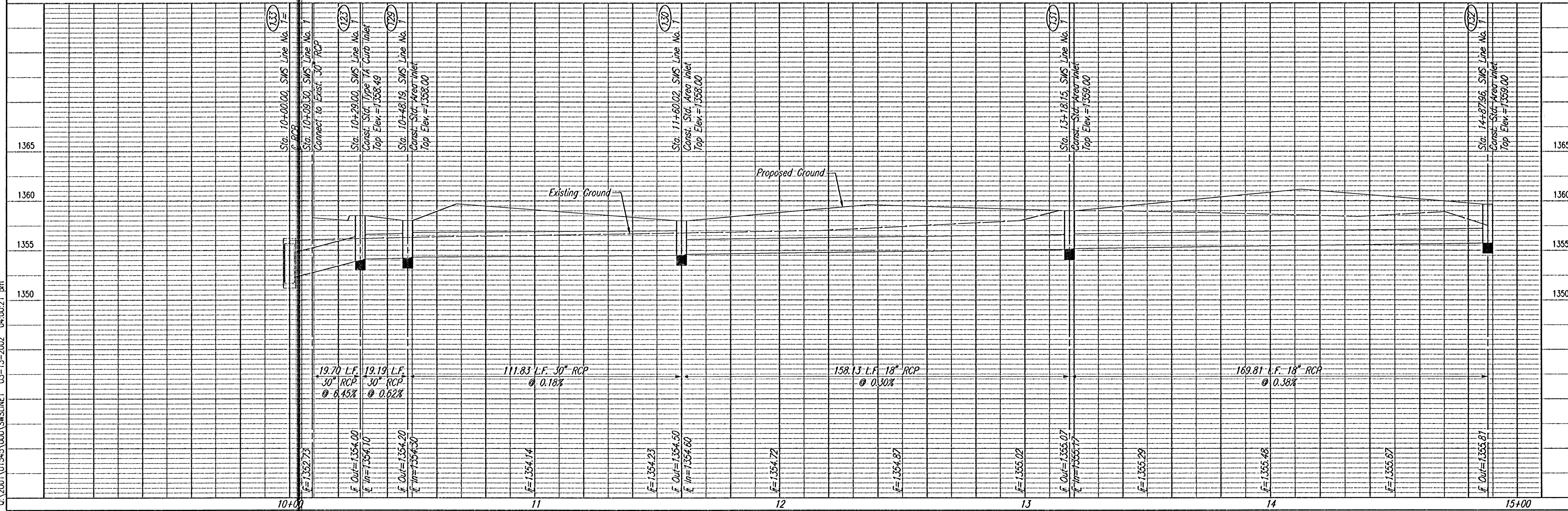
Sta. 11+60.02, SWS Line No. 1=
 Const. Type C Area Inlet
 L=4'-0", W=4'-0"
 Top Elev.=1358.00
 Install 158.13 L.F. 18" RCP (N)
 Plug with Temporary Redwood Pipe Plug
 See Sh. No. 22

Sta. 14+87.96, SWS Line No. 1=
 Const. Std. 2'x2' Area Inlet
 L=2'-0", W=2'-0"
 Top Elev.=1359.00
 See Sh. No. 23

SCALE: 1"=20'

SEE SHEET NO. 19 FOR COORDINATES.

DSNR: DEP OPER: S40 SCALE: 1"=20.00
 0:2007101545000/SWS/INLET 03-13-2002 04:00:21 pm



BALHROP 4TH ADDITION

SWS LINE NO. 1
 STA. 10+09.30 TO STA. 14+87.96

C.O.W. PROJ. NO. 472-83468

Professional Engineering Consultants, P.A.
 303 S. TOPEKA • WICHITA, KANSAS 67202
 316-266-2691 • FAX 316-266-3003

Designed by: BER
 Drawn by: DEP

Job No. 01945
 Date: MARCH, 2002

Sheet 16 of 55