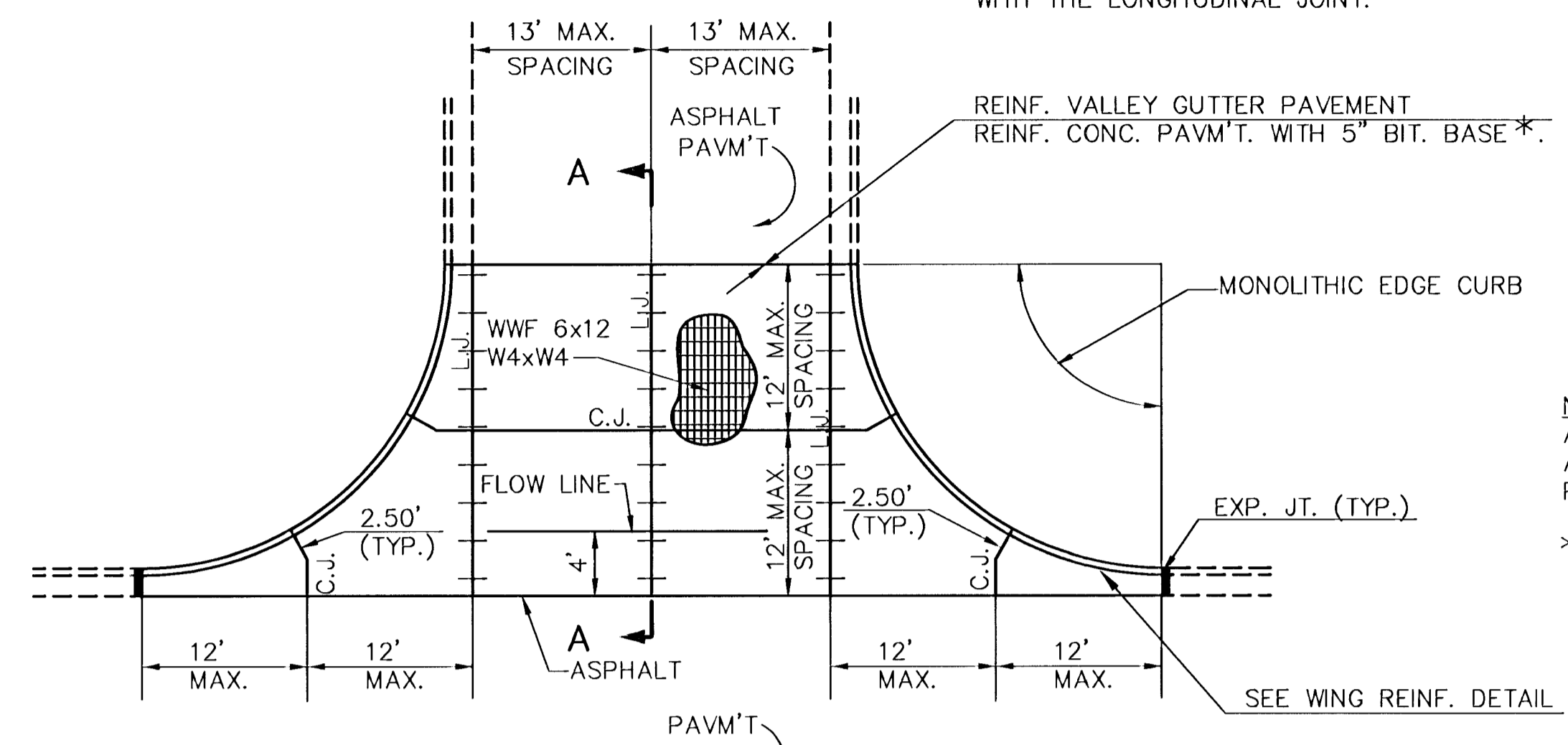
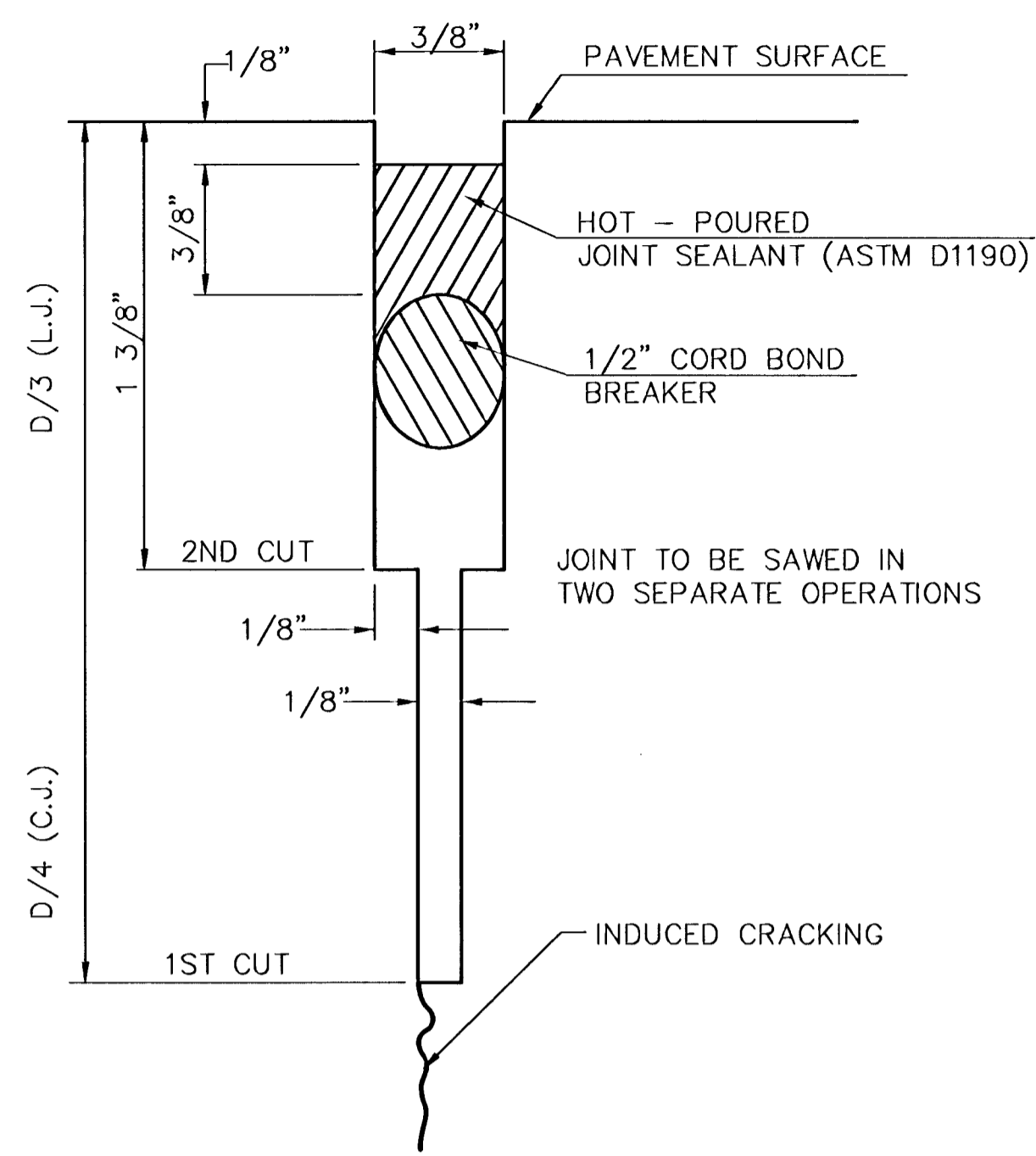


6"x12" W4xW4 WIRE FABRIC REINFORCING SHALL BE PLACED SUCH THAT THE WIRES WITH THE 6" SPACING WILL RUN PARALLEL WITH THE LONGITUDINAL JOINT.

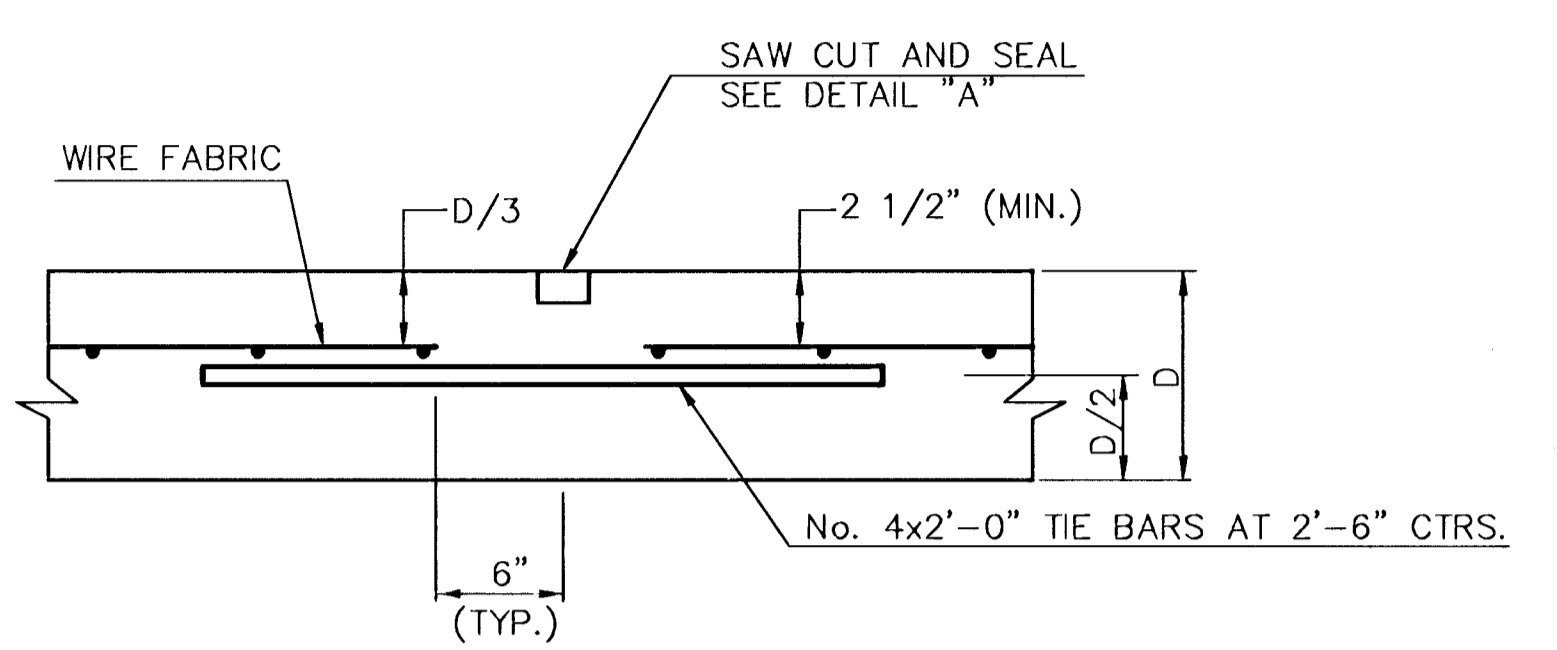


PLAN
REINFORCED VALLEY GUTTER
SCALE: NONE

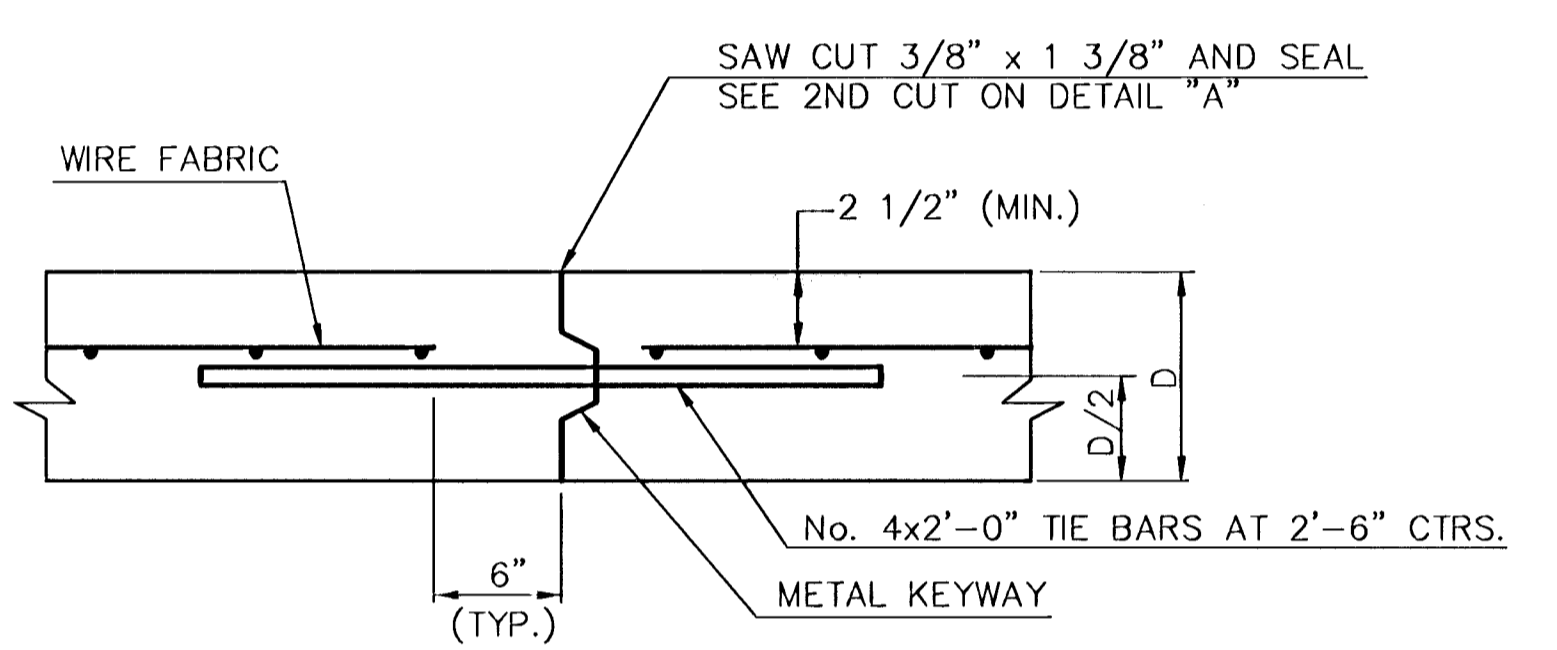
NOTE:
ALL CONCRETE VALLEY GUTTER REINFORCEMENT SHALL BE ADEQUATELY SUPPORTED BY BAR CHAIRS IN THE REQUIRED POSITION UNLESS APPROVED OTHERWISE BY THE ENGINEER.
* NOT TO BE USED WITH CRUSHED ROCK BASE.



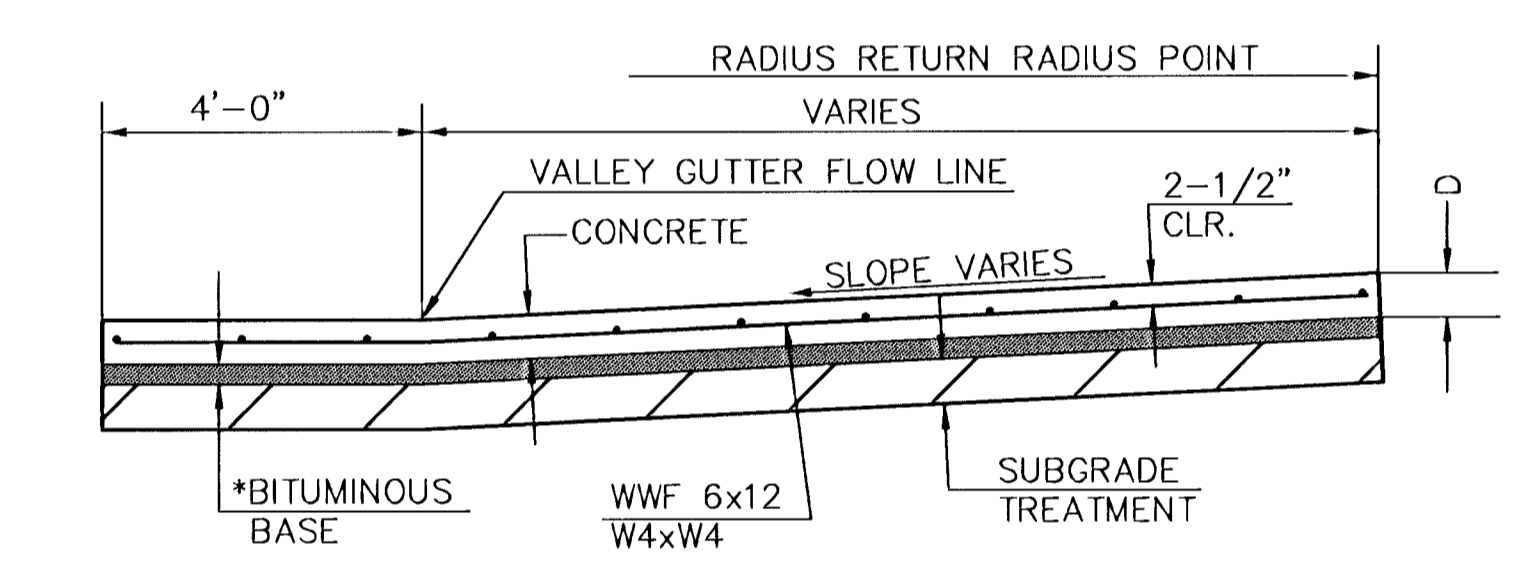
DETAIL "A"
SCALE: NONE



LONGITUDINAL JOINT DETAIL (L.J.)
SCALE: NONE

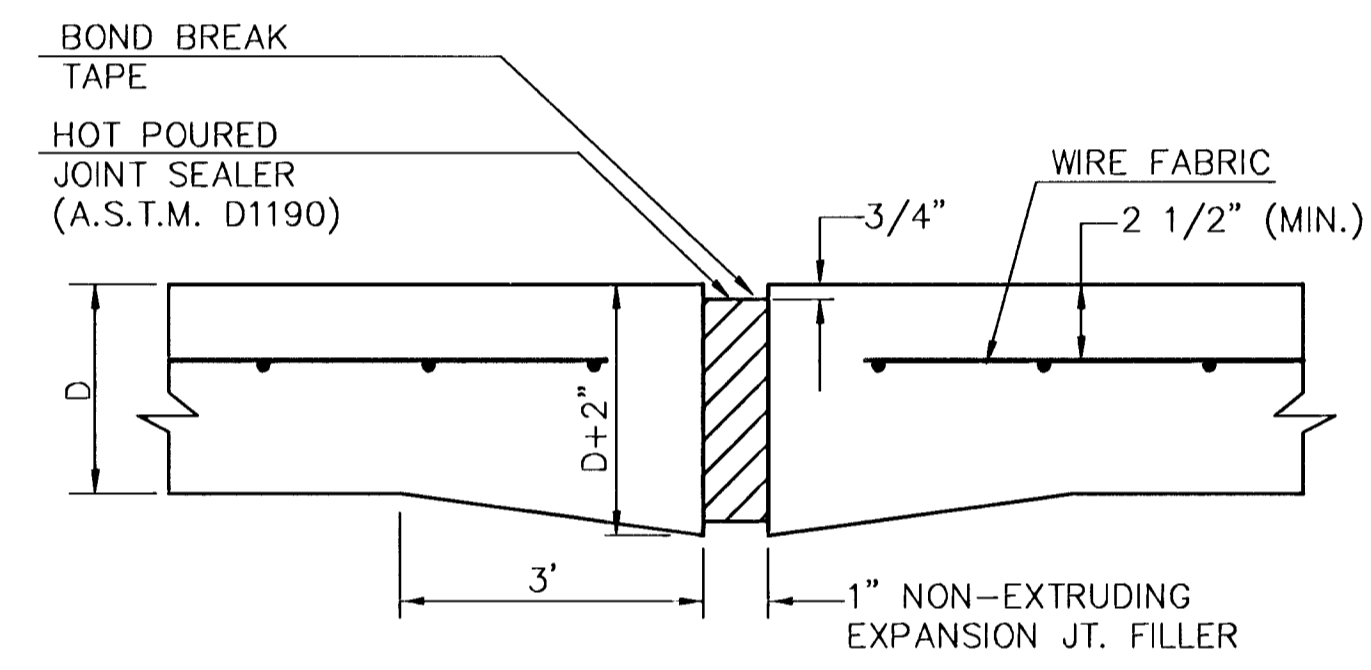


OPTIONAL LONGITUDINAL CONSTRUCTION JOINT (L.J.)
SCALE: NONE
(Alternate L.J.)



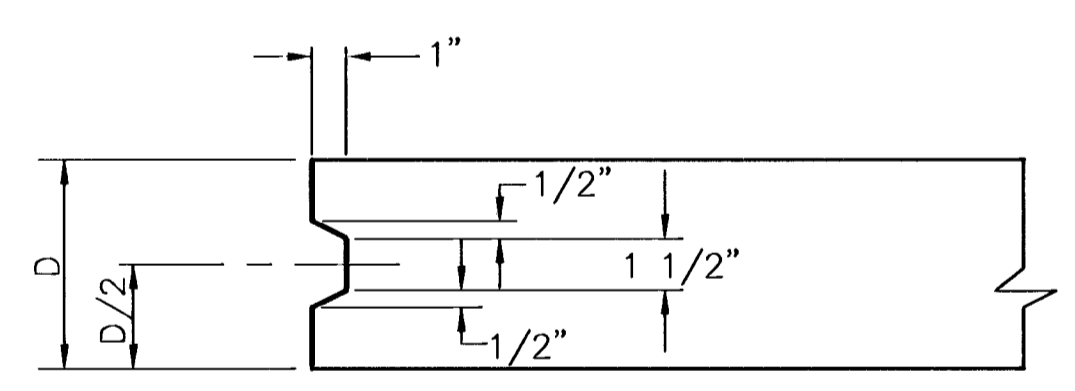
SECTION A-A
SCALE: NONE

*NOT TO BE USED WITH CRUSHED ROCK BASE

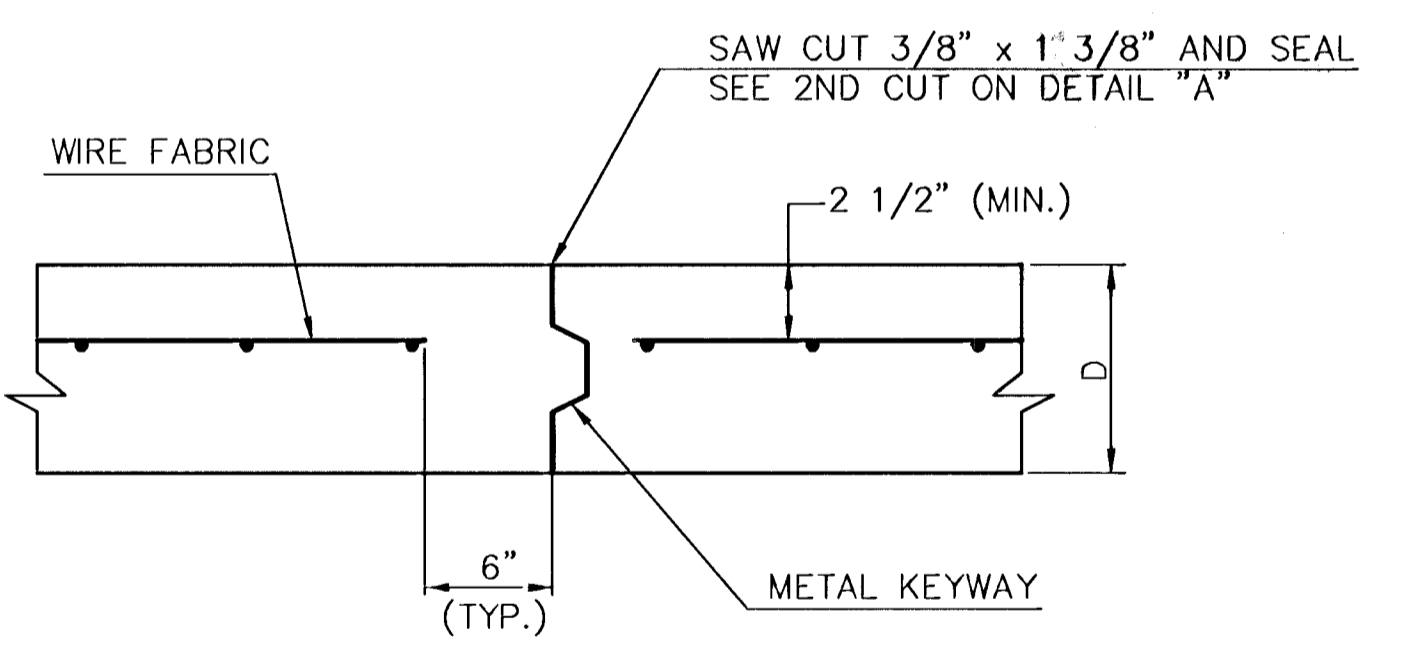


EXPANSION JOINT
SCALE: NONE

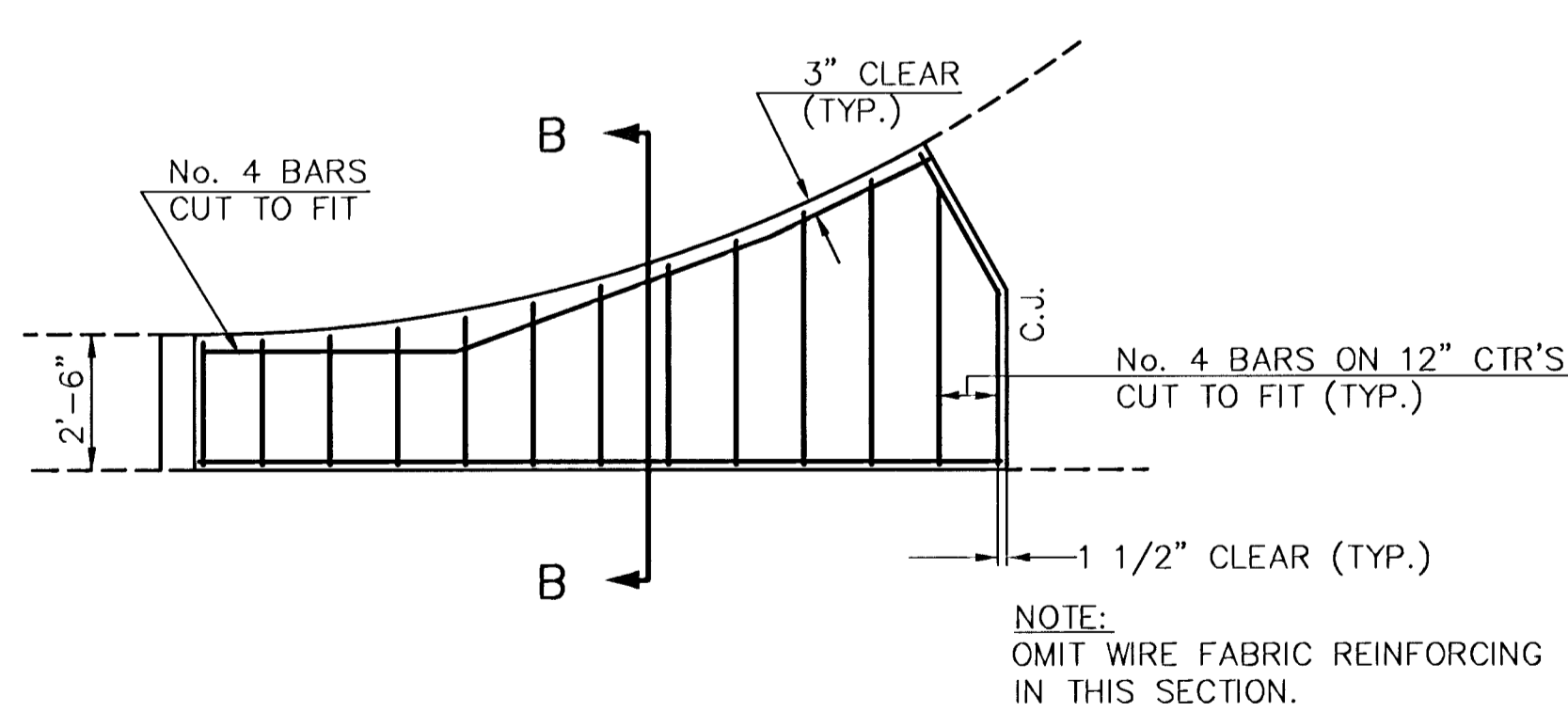
NOTE:
EXTRA THICKNESS TO BE SUBSIDIARY TO PRICE OF SQ. YDS. PAVEMENT.



KEYWAY DETAIL
SCALE: NONE

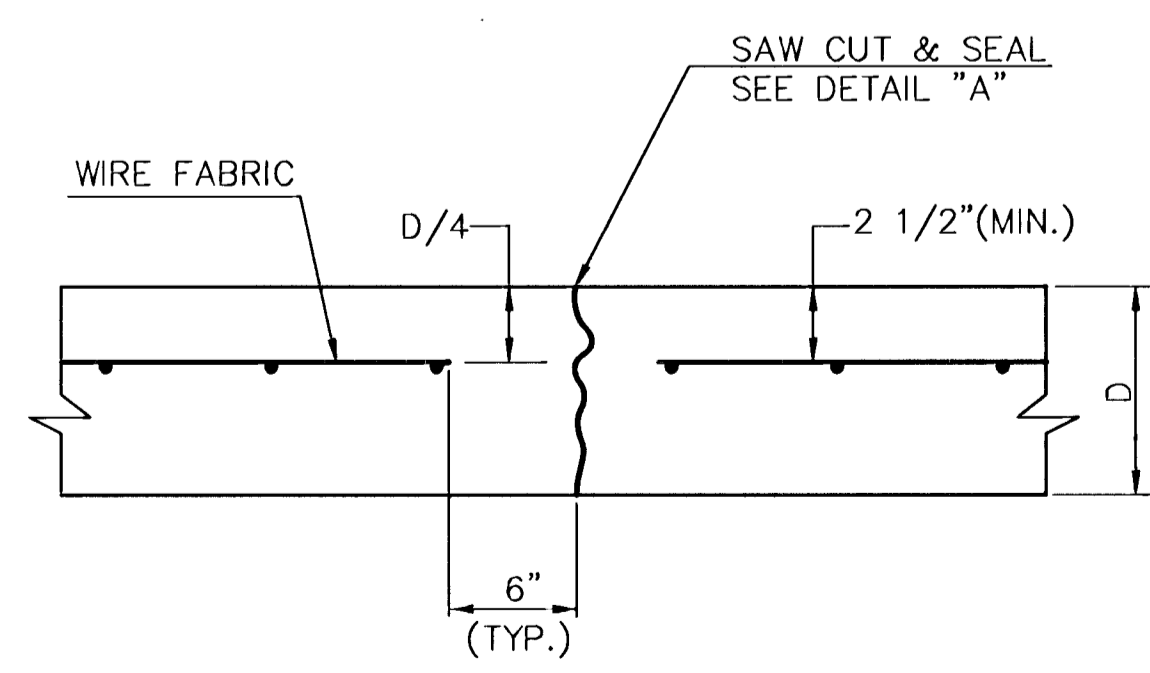


OPTIONAL CONTRACTION CONSTRUCTION JOINT (C.J.)
SCALE: NONE
(Alternate C.J.)

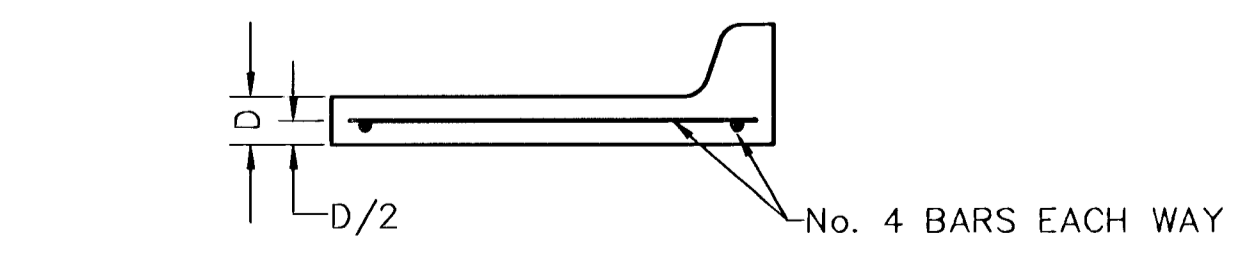


WING REINFORCING DETAIL
SCALE: NONE

NOTE:
OMIT WIRE FABRIC REINFORCING IN THIS SECTION.



CONTRACTION JOINT DETAIL (C.J.)
SCALE: NONE



SECTION B-B
SCALE: NONE

LEGEND
C.J. IDENTIFIES CONTRACTION JOINT
L.J. IDENTIFIES LONGITUDINAL JOINT

| | |
|--------------------------------|---------|
| VALLEY GUTTER & MISC. DETAILS | |
| CITY OF WICHITA, KANSAS | |
| PROJECT NUMBER 472-83286 | 4 18 |

H:\ACTIV\100243\DWG\PAV\00243E03.DWG Mod Nov 27 17:05:01 2000

F:\LIBRARY\CIVIL\PAVE\WICHITA\VEGTLED.DWG