

CONST. 16 L.F. OF CONC. SLOPE DRAIN SPECIAL. (SEE DETAIL THIS SHEET) PROVIDE SEDIMENT BARRIER (SEE DETAIL SHEET 14)

CONST. 7" A.C. PAVEMENT ON 6" CRUSHED ROCK BASE W/GEOGRID

CONST. 8" CONCRETE VALLEY GUTTER W/5" CRUSHED ROCK BASE ON GEOGRID REINF. (MATCH INTO EXISTING)

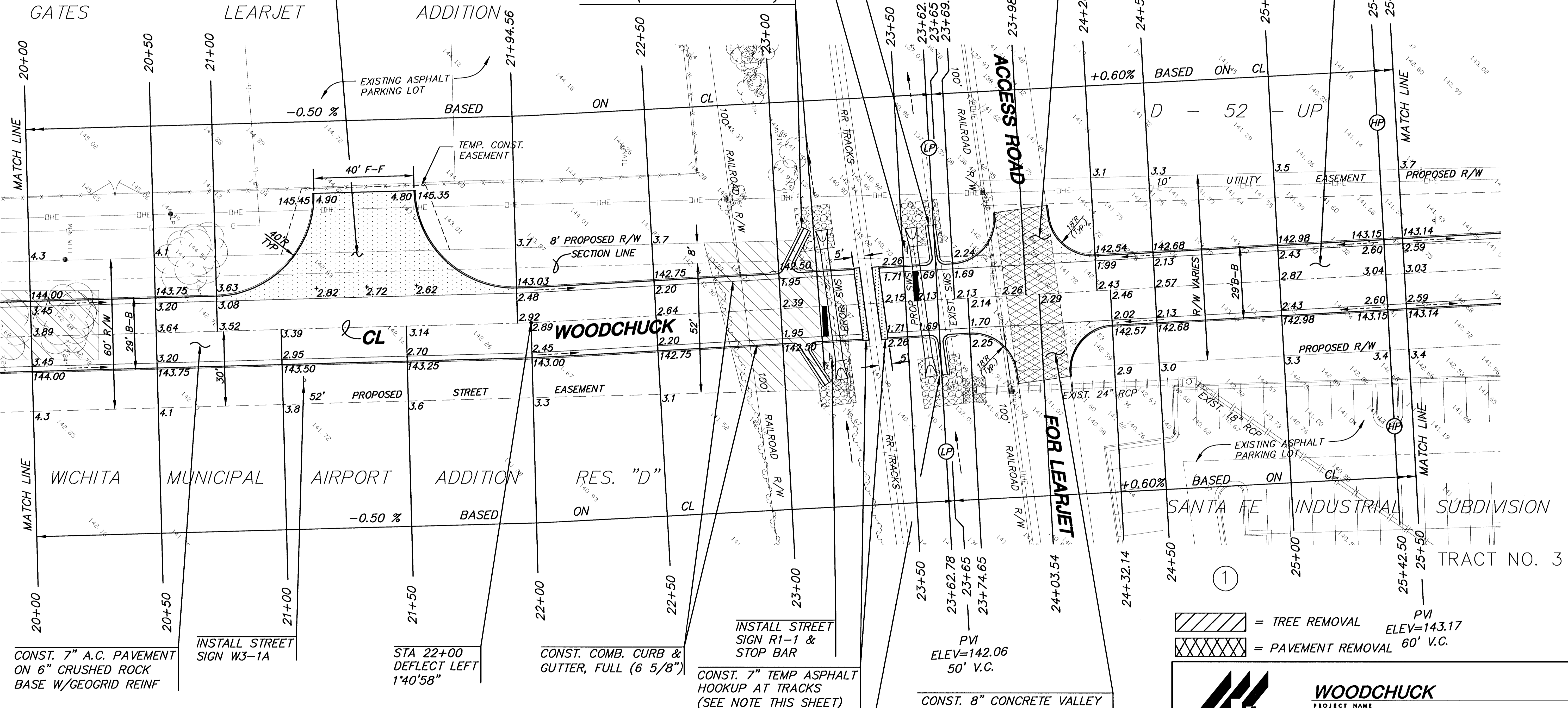
CONST. 8" CONC. VALLEY GUTTER W/5" CRUSHED ROCK BASE ON GEOGRID REINF.

CONST. 22 L.F. OF CONC. SLOPE DRAIN SPECIAL EACH. (SEE DETAIL SHEET 8) PROVIDE SEDIMENT BARRIER (SEE DETAIL SHEET 14)

INSTALL STREET SIGN R1-1 & STOP BAR

PVI ELEV=142.06 50' V.C.

PVI ELEV=143.17 60' V.C.



CONST. 7" A.C. PAVEMENT ON 6" CRUSHED ROCK BASE W/GEOGRID REINF

INSTALL STREET SIGN W3-1A

STA 22+00 DEFLECT LEFT 1'40"58"

CONST. COMB. CURB & GUTTER, FULL (6 5/8")

CONST. 7" TEMP ASPHALT HOOKUP AT TRACKS (SEE NOTE THIS SHEET)

CONST. 8" CONCRETE VALLEY GUTTER W/5" CRUSHED ROCK BASE ON GEOGRID REINF. (MATCH INTO EXISTING)

Legend:
 [Hatched Box] = TREE REMOVAL
 [Cross-hatched Box] = PAVEMENT REMOVAL
 PVI ELEV=143.17 60' V.C.

NOTE: CONTRACTOR TO CONSTRUCT ASPHALT PAVING & CURB AND GUTTER TO WITHIN 5' OF THE CENTER LINE OF EXISTING MAINLINE RR TRACKS. CONTRACTOR SHALL INSTALL TEMP. PAVEMENT HOOKUP UP TO TRACKS. CONTRACTOR SHALL COORDINATE WORK AT TRACKS WITH CENTRAL KANSAS RAILROAD (CKR). CKR WILL PROVIDE AND INSTALL PAVING MATERIAL IN THE CENTER OF THE MAIN LINE TRACKS. CONTRACTOR SHALL GIVE ADVANCED NOTICE TO CKR AS TO WHEN THIS WORK WILL NEED TO BE DONE.

CONST. 16 L.F. OF CONC. SLOPE DRAIN SPECIAL. (SEE DETAIL THIS SHEET) PROVIDE SEDIMENT BARRIER (SEE DETAIL SHEET 14)

WOODCHUCK
PROJECT NAME

PAVING PLANS
SHEET TITLE

DFL DESIGN BY.	GJR DRAWN BY.	KHB CHECKED BY.
OCT. 2000 DATE	00243E3 JOB NO.	9 / 18 SHEET/OF

411 N. WEBB ROAD
WICHITA, KS. 67206
316-684-9600

H:\ACTIV\100243E3.DWG\PAV\00243E3.DWG Mon Nov 27 16:55:56 2000