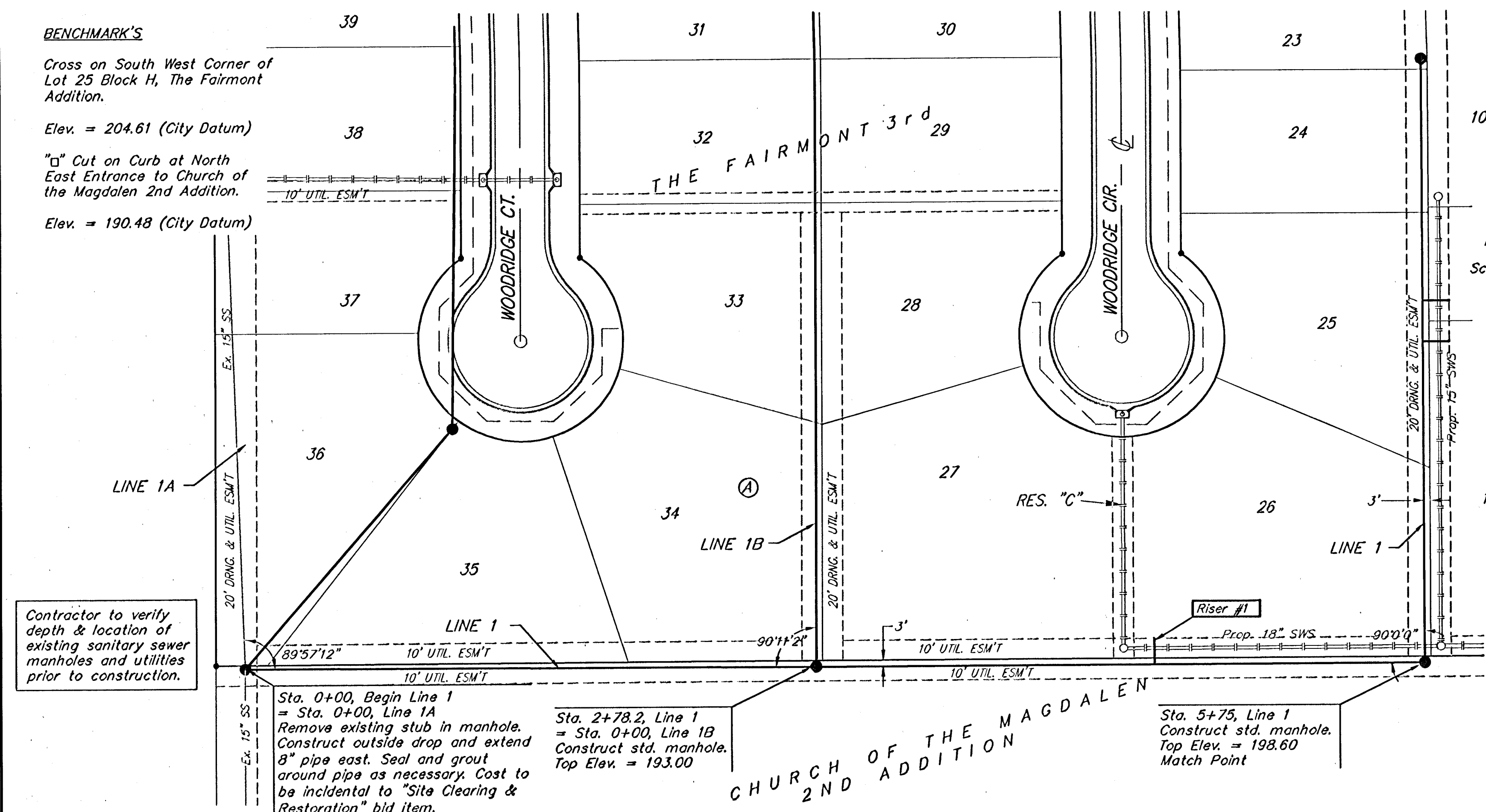


BENCHMARK'S

Cross on South West Corner of Lot 25 Block H, The Fairmont Addition.
Elev. = 204.61 (City Datum)

"C" Cut on Curb at North East Entrance to Church of the Magdalen 2nd Addition.
Elev. = 190.48 (City Datum)



Contractor to verify depth & location of existing sanitary sewer manholes and utilities prior to construction.

Sta. 0+00, Begin Line 1 = Sta. 0+00, Line 1A
Remove existing stub in manhole. Construct outside drop and extend 8" pipe east. Seal and grout around pipe as necessary. Cost to be incidental to "Site Clearing & Restoration" bid item.
Top Elev. = 191.50

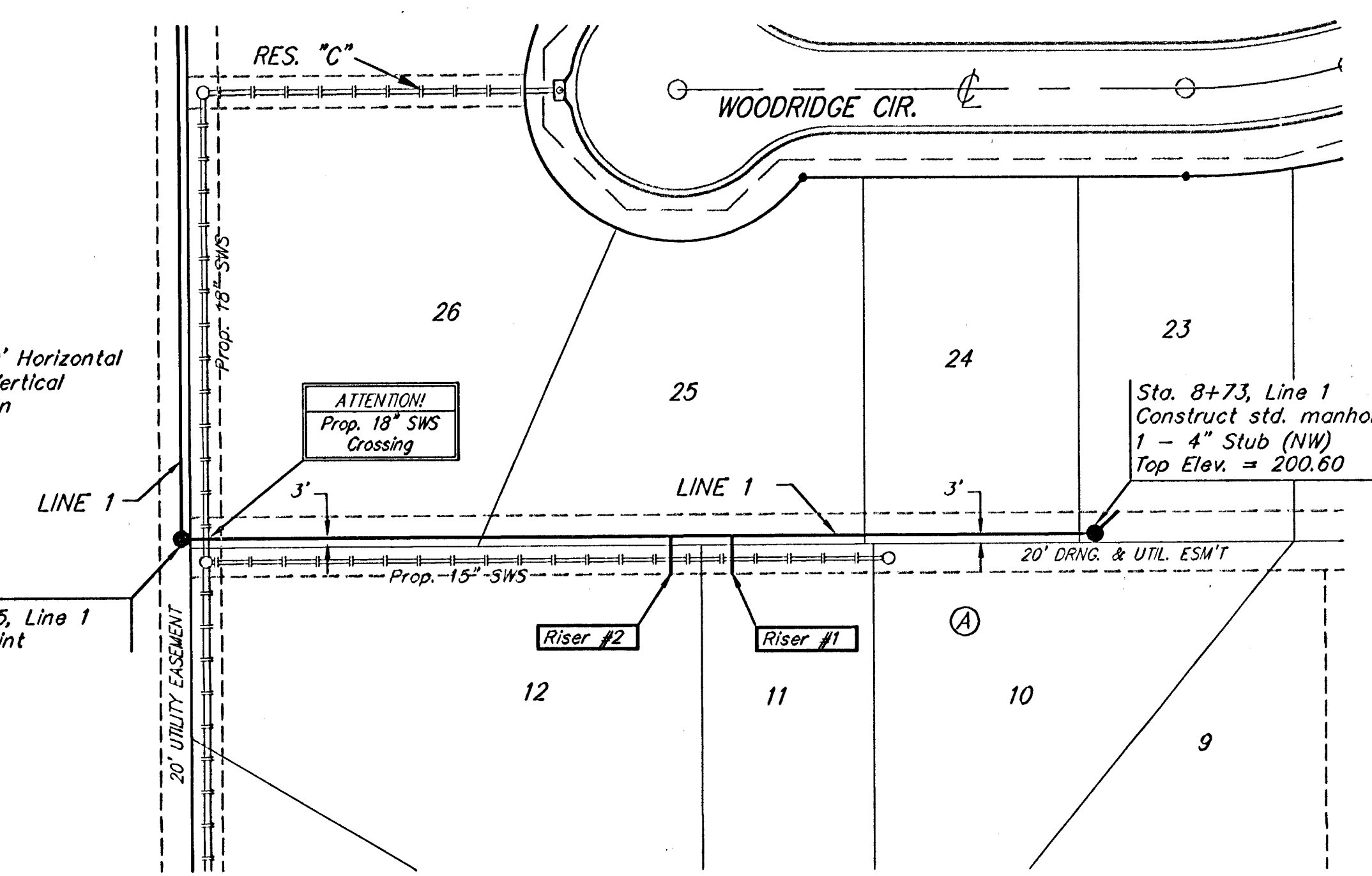
Sta. 2+78.2, Line 1 = Sta. 0+00, Line 1B
Construct std. manhole.
Top Elev. = 193.00

Sta. 5+75, Line 1
Construct std. manhole.
Top Elev. = 198.60
Match Point

Scale: 1" = 40' Horizontal
1" = 5' Vertical
• = Iron

Scale: 1" = 40' Horizontal
1" = 5' Vertical
• = Iron

Sta. 5+75, Line 1
Match Point



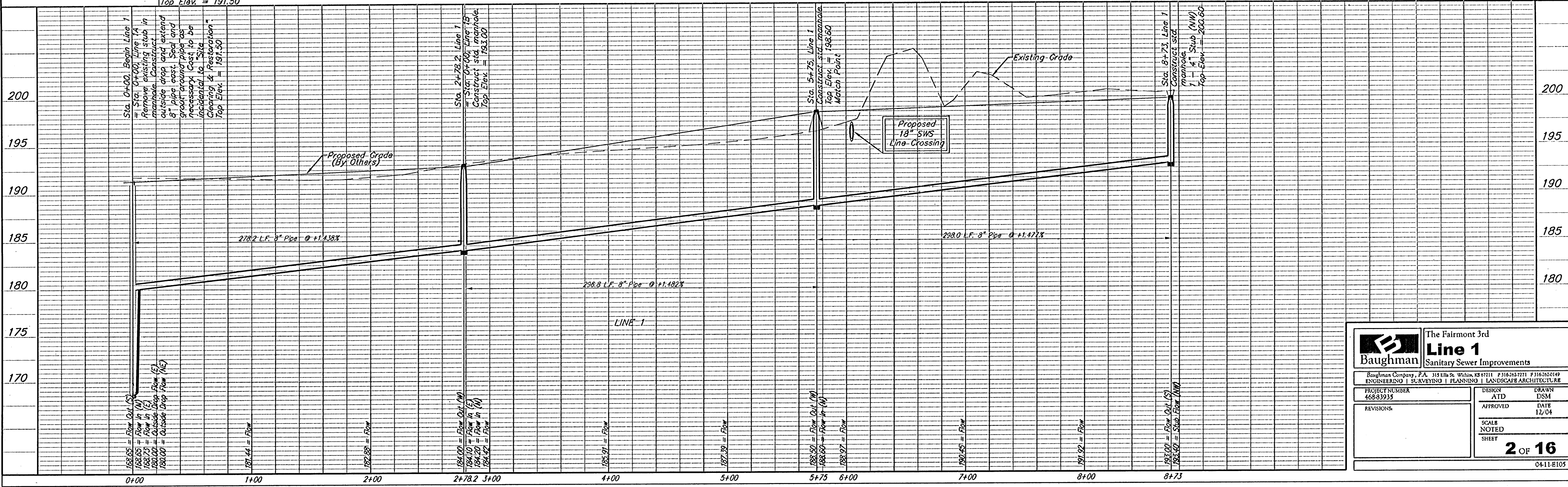
Scale: 1" = 40' Horizontal
1" = 5' Vertical
• = Iron

Sta. 8+73, Line 1
Construct std. manhole.
1 - 4" Stub (NW)
Top Elev. = 200.60

SEWER SERVICE TABLE

NUMBER	TYPE	LOCATION			FOR INFORMATION ONLY	
		LOT NO.	BLOCK NO.	LINE NO.	STATION DIRECTION	APPROXIMATE LENGTH 4" PIPE
1	8" X 4" Tee Saddle	26	A	1	4+43.0/RL	5.0' VERTICAL 13.0' HORIZONTAL
2	8" X 4" Tee Saddle	12	A	1	7+35.0/RL	4.0' VERTICAL 13.0' HORIZONTAL
3	8" X 4" Tee Saddle	11	A	1	7+55.0/RL	4.0' VERTICAL 13.0' HORIZONTAL

NOTE: Vertical Riser Pipe shall be extended to 2' minimum above ground water elevation and 4' maximum below proposed ground elevation. Riser construction shall be according to method "B". See Detail, sheet 10.



Baughman The Fairmont 3rd
Line 1
Sanitary Sewer Improvements

Baughman Company, P.A. 115 E. St. W. Schuylkill, PA 19101-1111 P 3162627271 F 3162620149
ENGINEERING | SURVEYING | PLANNING | LANDSCAPE ARCHITECTURE

PROJECT NUMBER: 468-83933
DESIGN: ATD
DRAWN: DSM
APPROVED: [Signature]
DATE: 12/04

REVISIONS: [Table]
SCALE: NOTED
SHEET: **2 OF 16**

0411-E105