

BENCHMARK'S

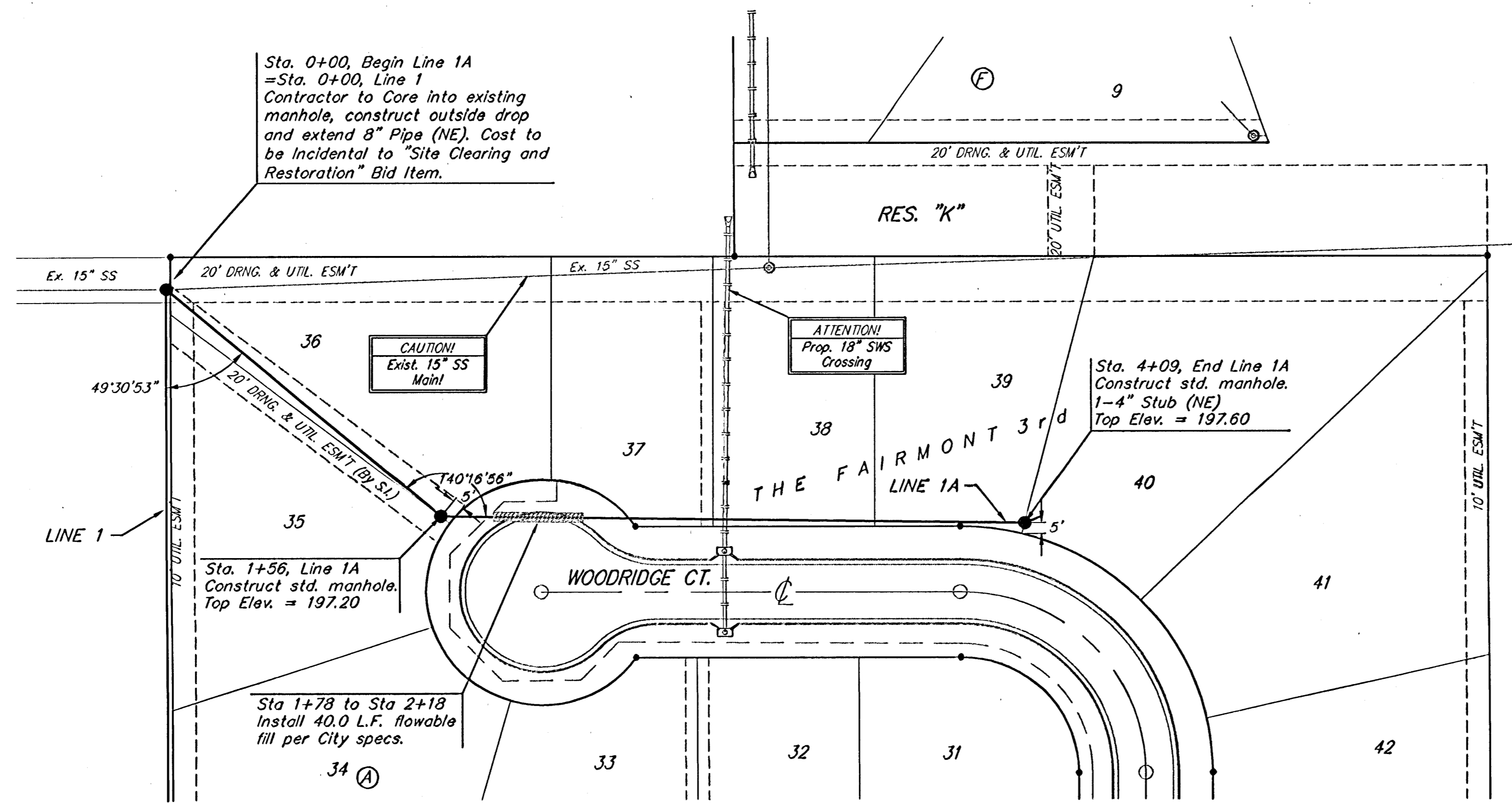
Cross on South West Corner of Lot 25 Block H, The Fairmont Addition.

Elev. = 204.61 (City Datum)

"a" Cut on Curb at North East Entrance to Church of the Magdalen 2nd Addition.

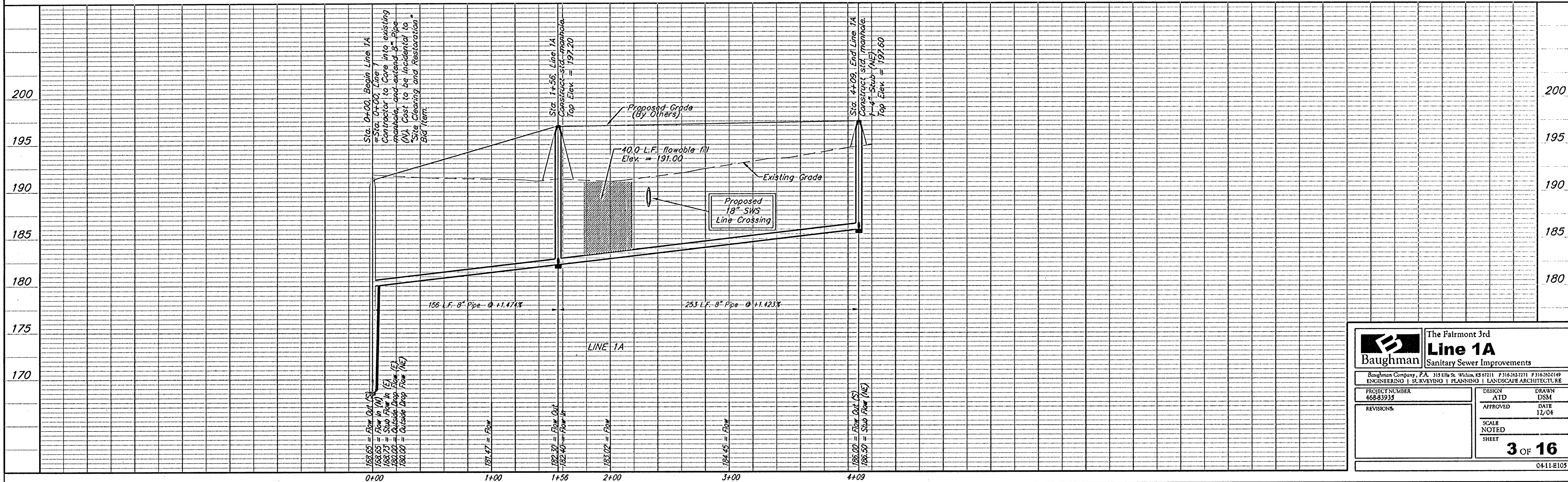
Elev. = 190.48 (City Datum)

Contractor to verify depth & location of existing sanitary sewer manholes and utilities prior to construction.



Scale: 1" = 40' Horizontal
1" = 5' Vertical
• = Iron

All trench and manhole excavation areas from Sta. 1+56 to Sta. 4+09, Line 1A shall be backfilled with sand. Except where flowable fill is called out. The sand backfill shall be within two feet of existing grade and shall be water-jetted and vibrated during backfilling. All costs shall be subsidiary to pipe cost.



		The Fairmont 3rd Line 1A Sanitary Sewer Improvements	
<small>Baughman Company, P.A. 315 E. St. W. Schu. KS 0711 P 316 262 7271 F 316 262 1049 ENGINEERING SURVEYING PLANNING LANDSCAPE ARCHITECTURE</small>			
PROJECT NUMBER 468-83933	DESIGN ATD	DRAWN DSM	
REVISIONS:	APPROVED DATE 12/04	SCALE NOTED	
		3 OF 16	
<small>04-11-B105</small>			