

BENCHMARK'S

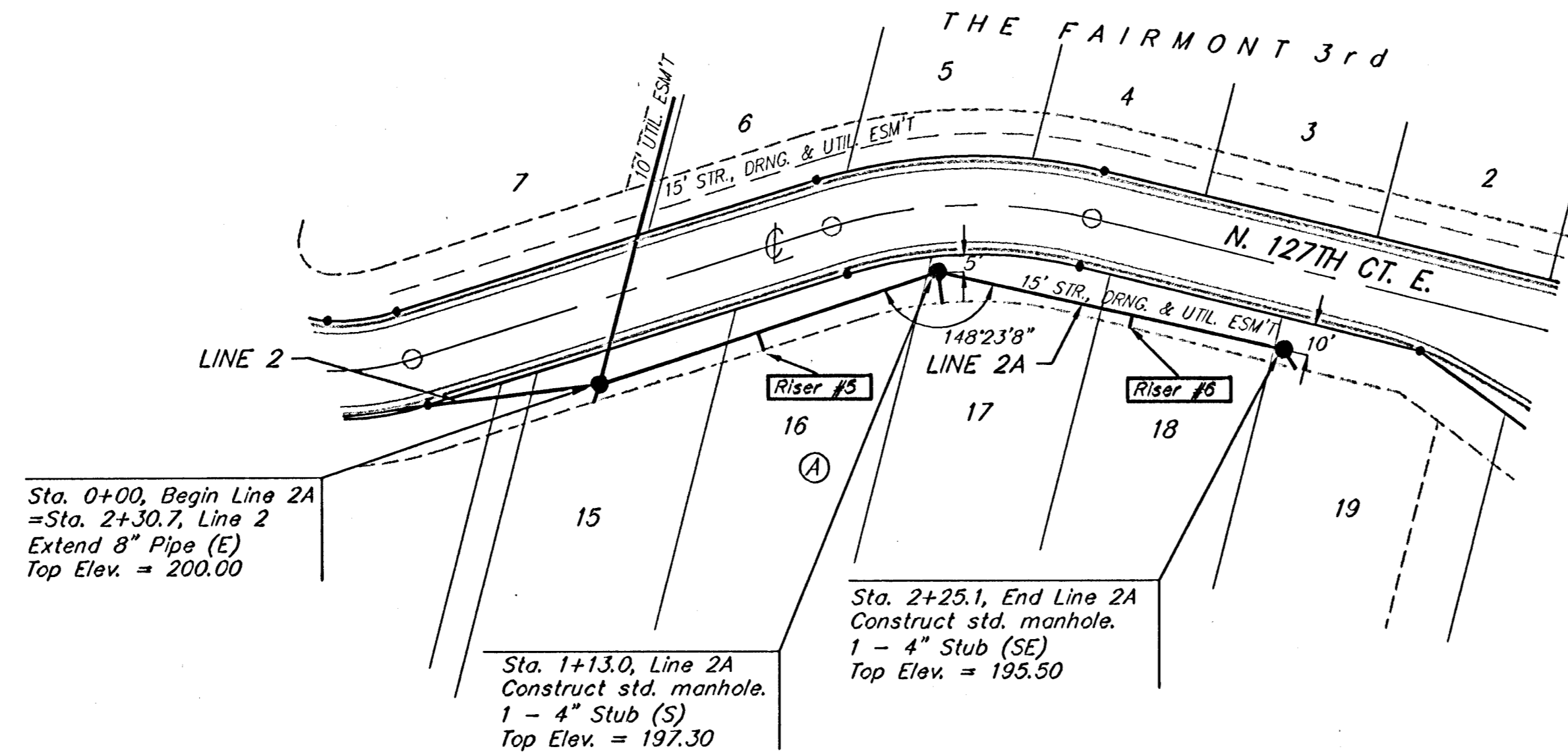
Cross on South West Corner of Lot 25 Block H, The Fairmont Addition.

Elev. = 204.61 (City Datum)

"d" Cut on Curb at North East Entrance to Church of the Magdalen 2nd Addition.

Elev. = 190.48 (City Datum)

Contractor to verify depth & location of existing sanitary sewer manholes and utilities prior to construction.

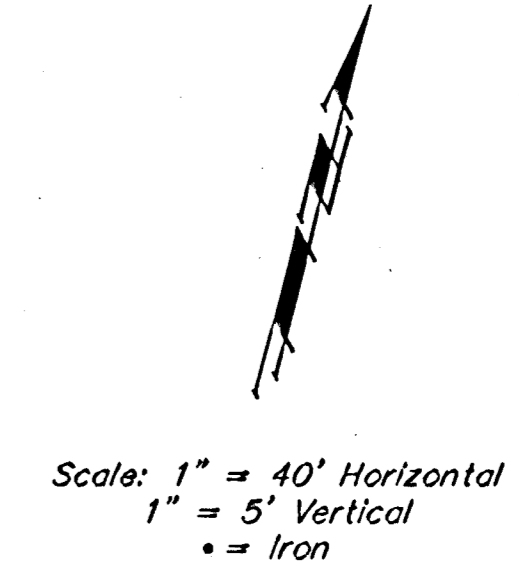


Sta. 0+00, Begin Line 2A
=Sta. 2+30.7, Line 2
Extend 8" Pipe (E)
Top Elev. = 200.00

Sta. 1+13.0, Line 2A
Construct std. manhole.
1 - 4" Stub (S)
Top Elev. = 197.30

Sta. 2+25.1, End Line 2A
Construct std. manhole.
1 - 4" Stub (SE)
Top Elev. = 195.50

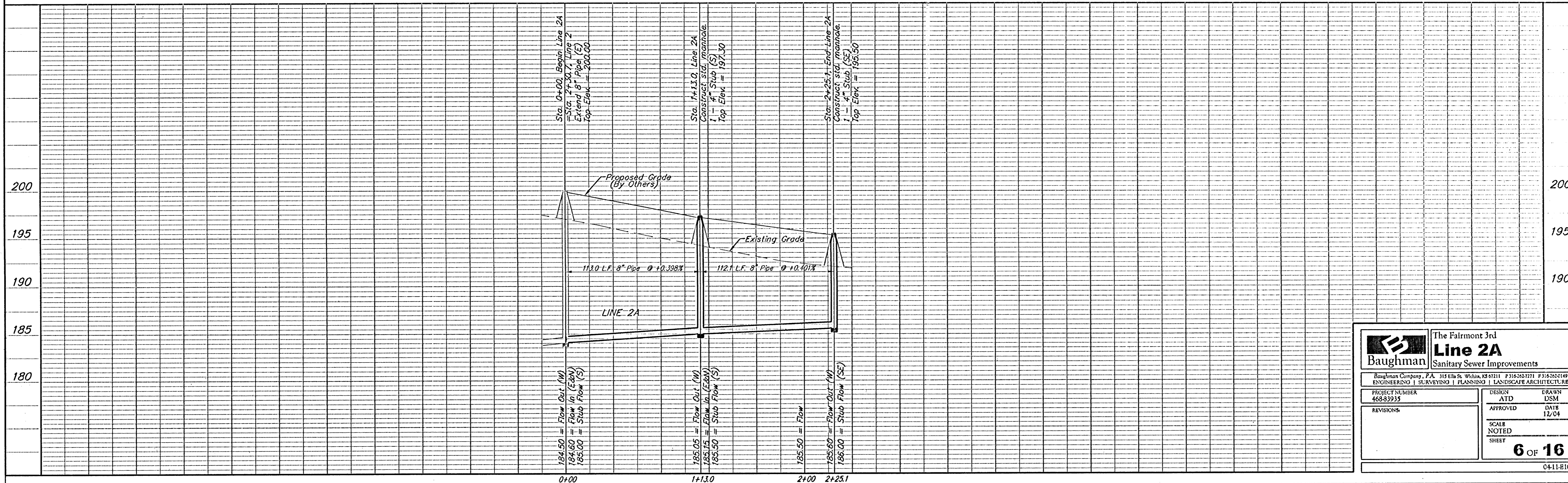
All trench and manhole excavation areas from Sta. 0+00 to Sta. 2+25.1, Line 2A shall be backfilled with sand. Except where flowable fill is called out. The sand backfill shall be within two feet of existing grade and shall be water-jettted and vibrated during backfilling. All costs shall be subsidiary to pipe cost.



SEWER SERVICE TABLE

NUMBER	TYPE	LOCATION				FOR INFORMATION ONLY	
		LOT NO.	BLOCK NO.	LINE NO.	STATION\ DIRECTION	APPROXIMATE LENGTH 4" PIPE VERTICAL	HORIZONTAL
5	8" X 4" Tee Saddle	16	A	2A	0+53.0/Rt.	10.5'	6.0'
6	8" X 4" Tee Saddle	18	A	2A	1+76.0/Rt.	7.0'	4.0'

NOTE: Vertical Riser Pipe shall be extended to 2' minimum above ground water elevation and 4' maximum below proposed ground elevation. Riser construction shall be according to method "B". See Detail, sheet 10.



Baughman		The Fairmont 3rd Line 2A Sanitary Sewer Improvements	
Baughman Company, P.A. 315 Elm & Walnut, #547111 F 316202711 F 316202719 ENGINEERING SURVEYING PLANNING LANDSCAPE ARCHITECTURE			
PROJECT NUMBER 468-83933	DESIGN ATD	DRAWN DSM	
REVISIONS:	APPROVED	DATE 12/04	
	SCALE NOTED SHEET	6 OF 16	
04-11-B105			