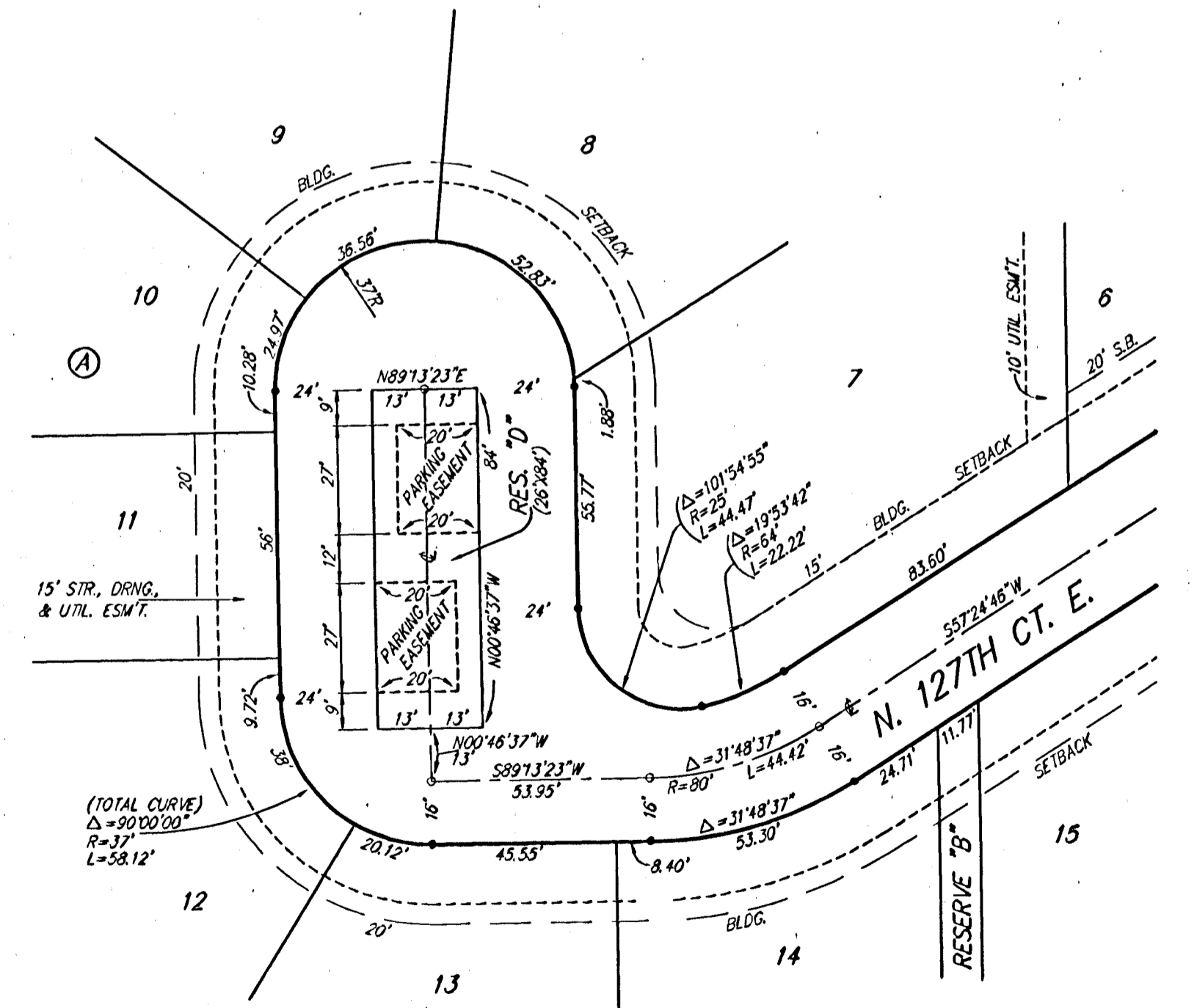
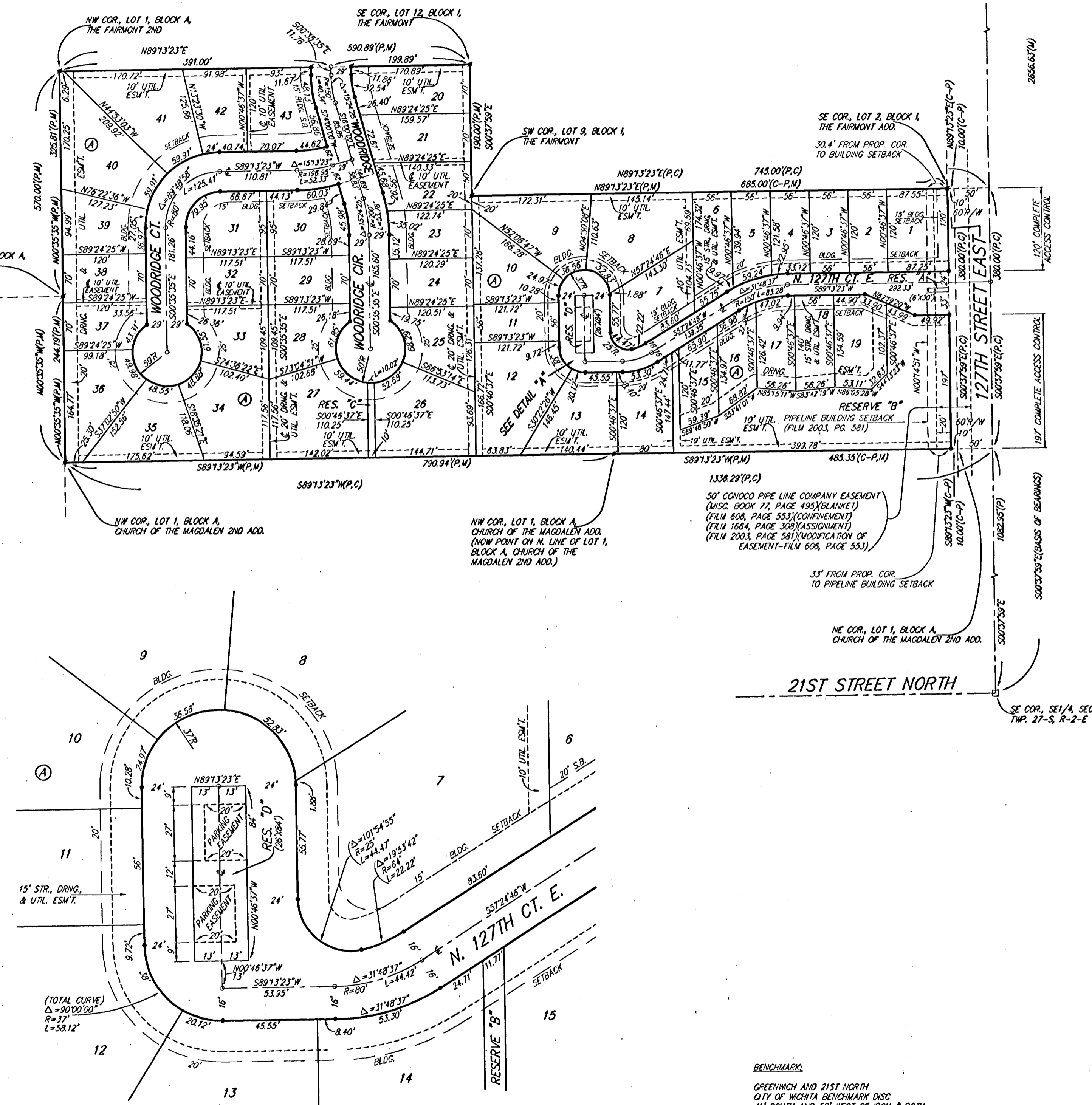
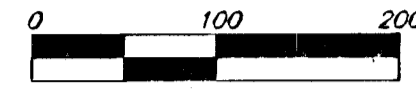


THE FAIRMONT 3RD

AN ADDITION TO WICHITA, SEDGWICK COUNTY, KANSAS

- = #4 REBAR W/ "BAUGHMAN" CAP (SET)
- = #4 REBAR W/ "BAUGHMAN" CAP (FOUND)
- = 1/4" IRON (FOUND)
- △ = STONE (FOUND)

- (M) = MEASURED
- (P) = PLATTED
- (C) = CALCULATED
- (C-P) = CALCULATED PER PLATTED INFO.



BENCHMARK:
 GREENWICH AND 21ST NORTH
 CITY OF WICHITA BENCHMARK DISC
 41" SOUTH AND 58" WEST OF IRON & BOTH
 12.0' SW OF ASPHALT, 14.2' EAST OF P.P.
 12.0' WEST OF P.P.
 ELEV. = 123.98 CITY DATUM
 (1381.38 NGVD29)

TOP OF IRON - SE COR., SE 1/4, SEC. 3
 TWP. 27-S, R-2-E, (127TH ST. EAST &
 21ST ST. NORTH)
 ELEV. = 158.01 CITY DATUM
 (1385.41 NGVD29)

+ CUT, SW COR., LOT 25, BLOCK H,
 THE FAIRMONT.
 ELEV. = 204.61 CITY DATUM
 (1382.01 NGVD29)

LOT	BLOCK	CITY DATUM	ELEVATION
14-19	A	189.1	1378.5
36-40	A	196.5	1383.9

NOTE:
 LOTS 1 THROUGH 19, BLOCK A, WITHIN
 THE FAIRMONT 3RD SHALL HAVE A
 5 FOOT INTERIOR SIDEYARD SETBACK.

State of Kansas) SS We, Baughman Company, P.A., Surveyors in
 Sedgwick County) SS aforesaid county and state do hereby certify that we have surveyed and
 platted "THE FAIRMONT 3RD", an Addition to Wichita, Sedgwick County,
 Kansas and that the accompanying plat is a true and correct exhibit of
 the property surveyed, described as and being a replat of Lot 1, Block A,
 The Fairmont 2nd, an Addition to Wichita, Sedgwick County, Kansas.
 Existing public easements and dedications
 being vacated by virtue of K.S.A. 12-512(b).
 Baughman Company, P.A.

This plat of "THE FAIRMONT 3RD", an
 Addition to Wichita, Sedgwick County, Kansas has been submitted to and
 approved by the Wichita-Sedgwick County Metropolitan Area Planning
 Commission, Wichita, Kansas.
 Dated this _____ day of _____, 2004.
 Wichita-Sedgwick County Metropolitan Area Planning Commission

_____, Chair
 Ronald L. Marnell
 _____, Secretary
 John L. Schlegel
 _____, Surveyor
 Michael G. Conroy

Know all men by these presents that we,
 the undersigned, have caused the land in the surveyors certificate to be
 platted into Lots, Blocks, Streets, and Reserves, to be known as "THE
 FAIRMONT 3RD", an Addition to Wichita, Sedgwick County, Kansas. The
 utility easements are hereby granted as indicated for the construction and
 maintenance of all public utilities. The drainage and utility easements are
 hereby granted as indicated for drainage purposes and for the
 construction and maintenance of all public utilities. The drainage
 easements are hereby granted as indicated for drainage purposes. The
 street, drainage, and utility easements are hereby granted as indicated for
 street related purposes, for drainage purposes, and for the construction
 and maintenance of all public utilities. The streets are hereby dedicated
 to and for the use of the public. Reserve "A" is hereby reserved for
 entry monuments, landscaping, drainage purposes, open space, streets,
 and utilities. Reserve "B" is hereby reserved for lakes, drainage purposes,
 open spaces, berms, pedestrian access and utilities as confined to
 easements. Reserve "C" is hereby reserved for open space, landscaping,
 sidewalks, and public pedestrian access. No obstructions shall be
 constructed or placed on or within said Reserve "C". Reserve "D" is
 hereby reserved for open space, landscaping, streets, parking as confined
 to easements, drainage purposes, and utilities. The parking easements
 within said Reserve "D" shall be used for residential parking exclusively.
 No obstructions shall be constructed or placed on or within the parking
 easements in said Reserve "D". Reserves "A", "B", "C", and "D" shall be
 owned and maintained by the homeowners association for the addition
 provided, however, that the undersigned, or the homeowners association,
 as the undersigned's successor in interest, may, in their discretion, deed a
 parcel of a Reserve to an owner or owners of an adjacent Lot, subject to
 the obligation to maintain such deeded parcel of a Reserve in compliance
 with the provisions hereof and in compliance with the maintenance
 covenants of any applicable restrictive covenants and/or regulations.
 Access controls shall be as depicted on the face of the plat and are
 hereby granted to the City of Wichita, Kansas. The Minimum Building Pad
 Elevations for the lowest opening to the structures shall be as indicated
 on the face of the plat.

This plat approved and all dedications
 shown hereon accepted by the City Council of the City of Wichita,
 Kansas, this _____ day of _____, 2004.
 _____, Mayor
 Carlos Mayans
 _____, City Clerk
 Karen Sublett

Reviewed in accordance with K.S.A. 58-2005
 on this _____ day of _____, 2004.
 _____, Deputy County Surveyor
 Tricia L. Robello, L.S. #1246
 Sedgwick County, Kansas

Fairmont LLC, a Kansas limited liability company
 Ritchie Associates, Inc., Manager
 _____, President
 Kevin M. Mullen

Entered on transfer record this _____ day
 of _____, 2004.
 _____, County Clerk
 Don Brace

State of Kansas) SS The foregoing instrument acknowledged before me,
 Sedgwick County) SS this _____ day of _____, 2004, by Kevin M. Mullen, President of
 Ritchie Associates, Inc., as Manager of Fairmont LLC, a Kansas limited
 liability company, on behalf of the limited liability company.

_____, Notary Public
 My App'l. Exp. _____

We, the undersigned holders of mortgages on the
 above described property, do hereby consent to this plat of "THE
 FAIRMONT 3RD", an Addition to Wichita, Sedgwick County, Kansas.
 INTRUST Bank, N.A.

State of Kansas) SS This is to certify that this plat has been
 Sedgwick County) SS filed for record in the office of the Register of Deeds, this _____ day
 of _____, 2004 at _____ o'clock _____ M; and is duly recorded.

_____, Register of Deeds
 Bill Meek
 _____, Deputy
 Linda Kizzire

State of Kansas) SS The foregoing instrument acknowledged be-
 Sedgwick County) SS fore me, this _____ day of _____, 2004, by _____,
 of INTRUST Bank, N.A., on behalf of the bank.

_____, Notary Public
 My App'l. Exp. _____