

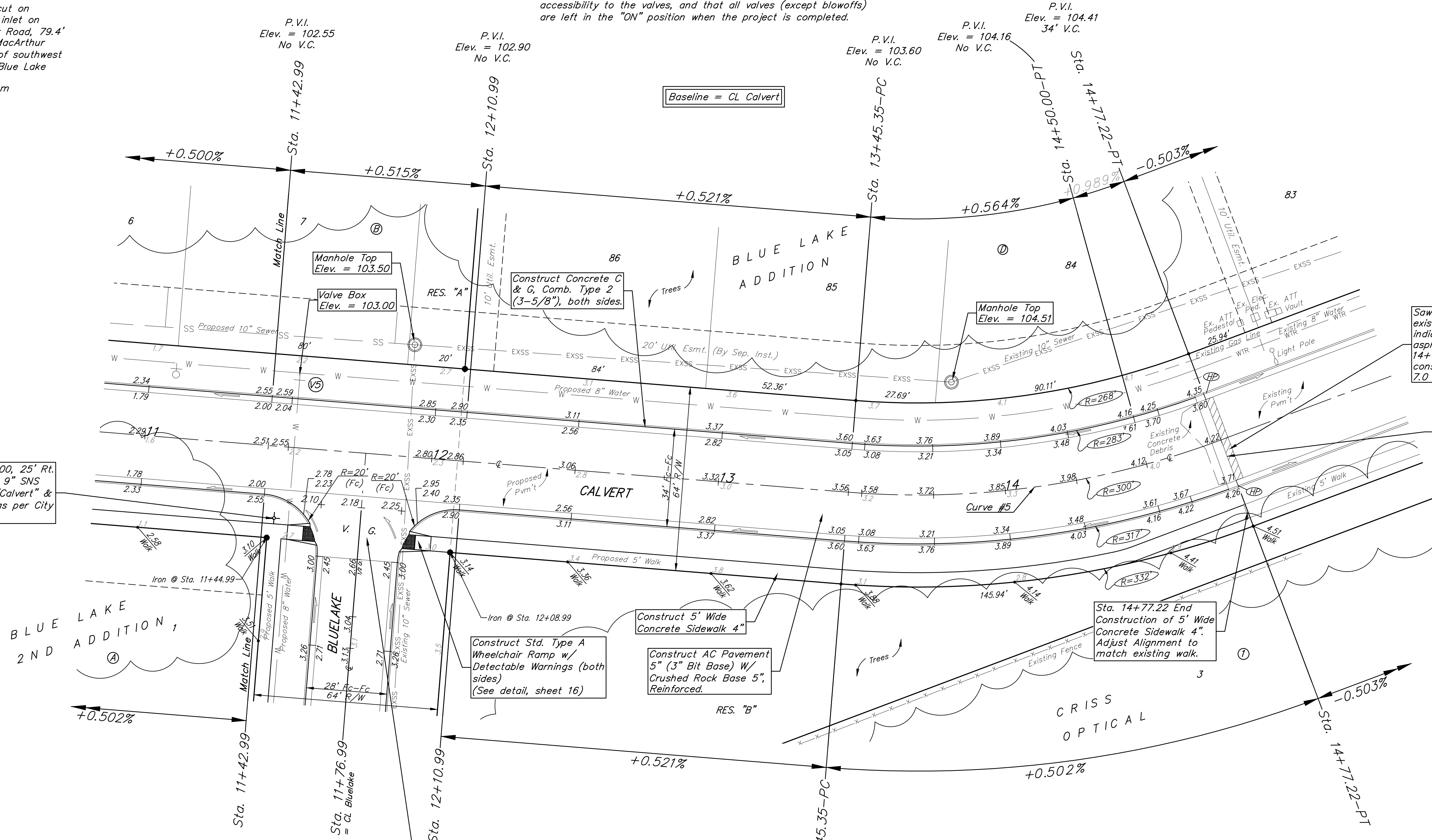
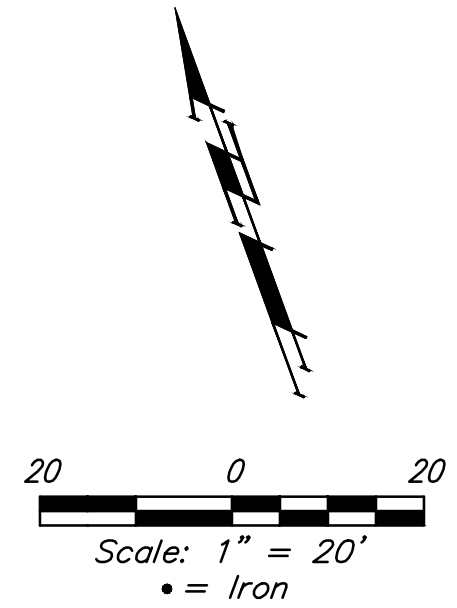
**BENCHMARKS:**  
 BM #1 - "□" on top of curb, north side of Calvert, 14.7' south of the most southerly corner common to Lots 83 and 84, Block D, Blue Lake Addition.  
 Elev. = 103.95 City Datum

BM #2 - "□" with + cut on northwest face of drop inlet on north side of MacArthur Road, 79.4' North of centerline of MacArthur Road and 152.3' E/SE of southwest corner of Reserve "C", Blue Lake 3rd Addition.  
 Elev. = 95.55 City Datum

**WATER VALVE LOCATION TABLE**

VALVE NUMBER	STREET	BASELINE STATION	OFFSET DISTANCE	OFFSET DIRECTION
V5	Calvert	11+51.99	26'	Lt.

Paving contractor will be responsible to operate all water valves on the project, in the presence of the inspector, to ensure accessibility to the valves, and that all valves (except blowoffs) are left in the "ON" position when the project is completed.



Sta 11+47.00, 25' Rt. Install Std. 9" SNS Assembly "Calvert" & "Bluelake" as per City specs.

Sawcut, remove and replace existing surface course as indicated. Sawcut existing asphalt to full depth at Sta. 14+77.22 to create neat asphalt construction joint. To be bid as 7.0 S.Y. AC Pavement Removed

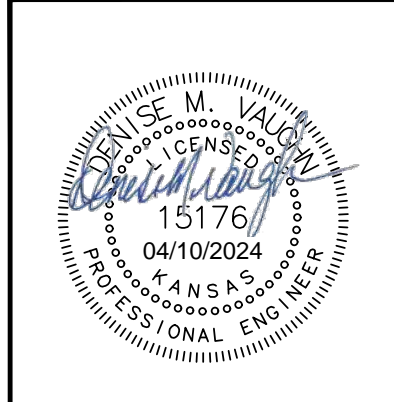
Sta 14+77.22, End construction of AC Pavement 5" (3" Bit Base) W/ Crushed Rock Base 5", Reinforced.

Sta. 14+77.22 End Construction of 5' Wide Concrete Sidewalk 4". Adjust Alignment to match existing walk.

Construct Concrete Pavement (VG) 7" (Reinf) on Crushed Rock Base 5", Reinforced with Concrete Curb, Mono Edge (6-5/8"). Transition from Concrete Curb, Mono Edge (6-5/8") to Concrete C & G, Comb. Type 2 (3-5/8") in 5', outside of valley gutter radius (both sides).

Curve #5					
Curve Data Based on Centerline					
Rad. = 300' Delta = 25°11'08" Tangent = 67.02'					
Arc = 131.87' L.C. = 130.81' Def./Ft. = 5.72963 Min.					
Face Chord Lengths					
Station	Arc	8' Left	8' Right	Defl.	Total Defl.
13+45.35	-	-	-	0°00'00"	0°00'00"
13+50.00	4.65'	4.26'	5.04'	0°26'39"	0°26'39"
13+75.00	25.00'	22.91'	27.08'	2°23'14"	2°49'53"
14+00.00	25.00'	22.91'	27.08'	2°23'14"	5°13'07"
14+25.00	25.00'	22.91'	27.08'	2°23'15"	7°36'22"
14+50.00	25.00'	22.91'	27.08'	2°23'14"	9°59'36"
14+77.22	27.22'	24.94'	29.48'	2°35'58"	12°35'34"

NOTE: ROLL TYPE CURB & GUTTER (TYPE 2) TO BE CONSTRUCTED ON THE PAVEMENT SHOWN ON THIS SHEET. TOP OF CURB ELEVATIONS ARE GIVEN FOR FULL HEIGHT CURB (TYPE 4).



**BAUGHMAN COMPANY**  
 315 Ellis St.  
 Wichita, KS 67211  
 316-262-7271  
 BaughmanCo.com

BLUE LAKE ADD./2ND ADD. PHASE 1

**CALVERT**

STREET & SWS IMPROVEMENTS

PROJECT NUMBER: 472-2023-085885

DESIGN: AEG DRAWN: TMS

DATE: April 10, 2024

SHEET 5 OF 37

File: E:\Projects\Blue Lake 2nd Addition\Engineering\Phase 1\1St\SW\1St\SW1.dwg