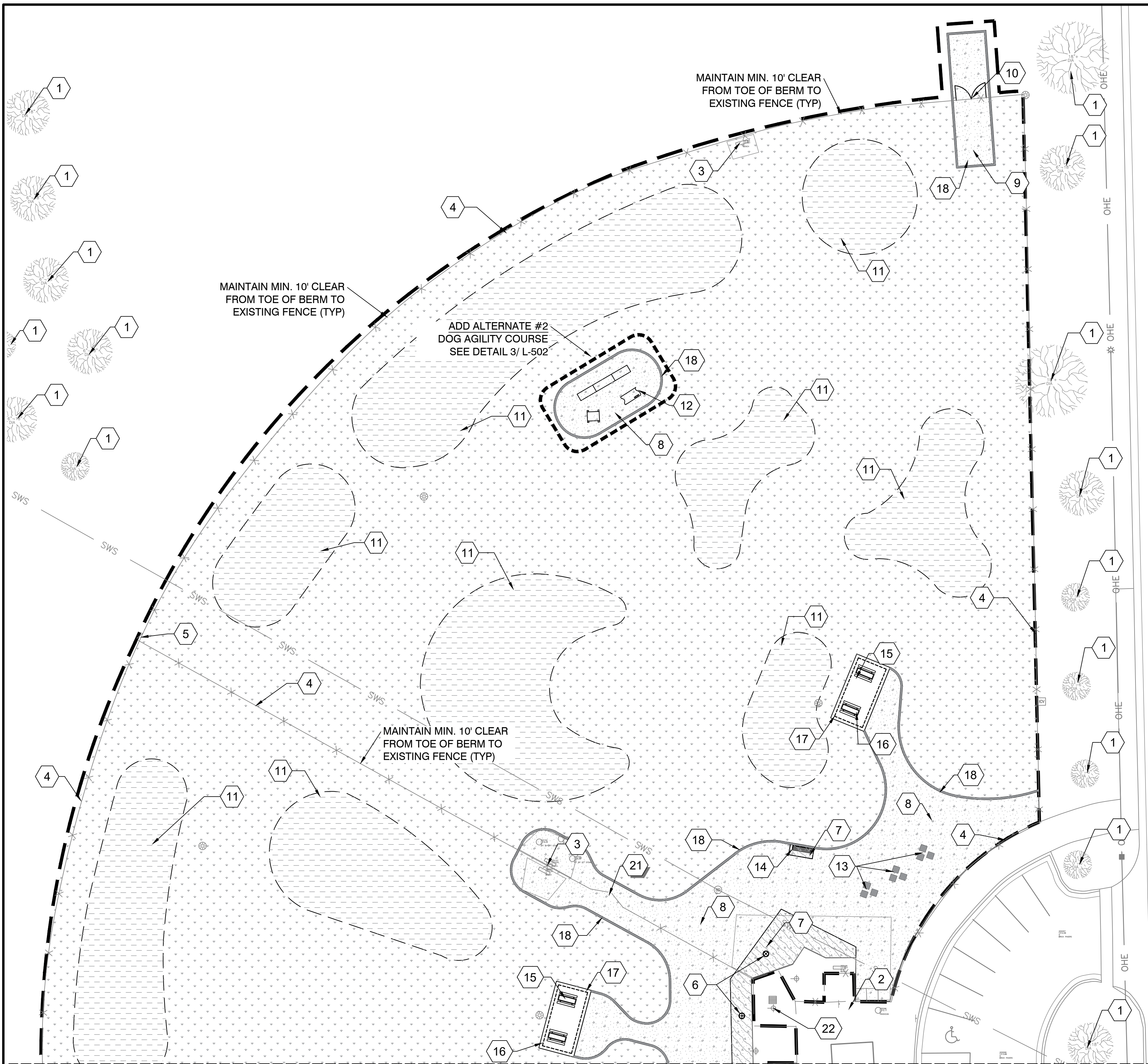
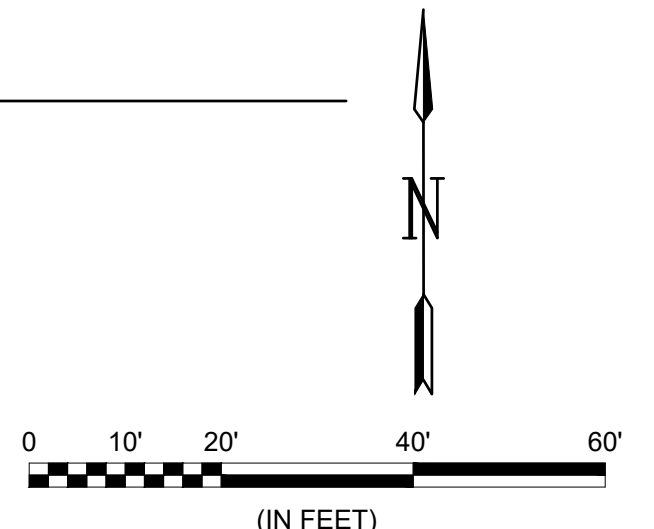


File: L:\2023\F02-2302060 - Meridian Dog Park Enhancements\Drawings\MER-C101-SP.dwg Last Save: 4/29/2024 11:37 AM Last saved by: BGillespie
 Last plotted by: Gillespie, Bailey I. Plot Style: AEC_B&W.ctb Plot Date: 4/29/2024 11:39 AM Plotter used: AutoCAD PDF (General Documentation).pc3




A SITE PLAN- DOG PARK NORTH
SCALE: 1" = 20'



LEGEND	
	PROPOSED SEEDED GRASS (90,560 S.F.) REFER TO SHEET L-101 FOR NOTES AND PLANT SCHEDULE
	PROPOSED BERMS WITH SEEDED GRASS (30,355 S.F.) REFER TO DETAIL 3/ SHEET L-502
	PROPOSED 4" CONCRETE PAVEMENT SURFACE (1,345 S.F.) REFER TO DETAIL 1/ SHEET C-501
	PROPOSED PERMEABLE GRAVEL PAVER W/ 3/8" CLEAN CHIPS (14,100 S.F.) REFER TO DETAIL 3/ SHEET L-501

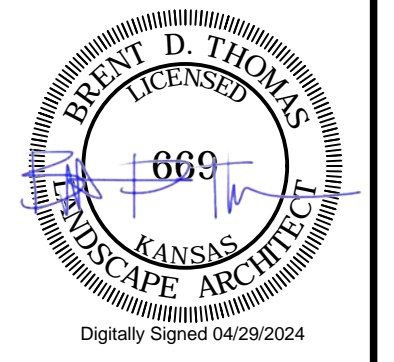
REFERENCE NOTES SCHEDULE	
SYMBOL	DESCRIPTION
1	EXISTING TREES TO REMAIN.
2	EXISTING CONCRETE PAVEMENT TO REMAIN.
3	EXISTING BENCHES TO REMAIN.
4	EXISTING FENCE TO REMAIN
5	EXISTING MAINTENANCE GATES TO REMAIN
6	PROPOSED LOCATION OF NEW DRINKING FOUNTAINS. REFER TO DETAIL 1/SHEETS L-502.
7	INSTALL 4" CONCRETE PAVEMENT SURFACE. REFER TO DETAIL 1/ SHEET C-501
8	INSTALL PERMEABLE GRAVEL PAVERS WITH 3/8" CLEAN CHIPS REFER TO DETAIL 3/ SHEET L-501
9	PROPOSED AGGREGATE VEHICLE ACCESS PAD AT GATE. REFER TO DETAIL 3/ SHEET L-501
10	PROPOSED DOUBLE SWING VEHICLE GATE. REFER TO DETAIL 1/ SHEET L-503
11	PROPOSED BERMS WITH GRASS COVER REFER TO DETAIL 2/ SHEET L-501
12	PROPOSED DOG AGILITY COURSE (ADD ALT. #2) REFER TO DETAILS SHEET L-502
13	PROPOSED LIMESTONE BLOCKS REFER TO DETAIL 5/ SHEET L-501
14	PROPOSED BENCHES REFER TO DETAIL 3/ SHEET L-502
15	PROPOSED PICNIC TABLES REFER TO FURNISHINGS SCHEDULE ON SHEET C-101
16	PROPOSED SHADE STRUCTURE REFER TO DETAIL 1/ SHEET L-504
17	PROPOSED STRUCTURAL SLAB AT SHELTER. REFER TO STRUCTURAL PLANS
18	6" WIDE CONCRETE EDGER (ADD ALT. #1) REFER TO DETAIL 4/ SHEET L-502
21	INSTALL MESH FENCE WHERE REMOVING EXISTING VEHICLE ACCESS GATES. REFER TO DETAIL 2/ SHEET L-503
22	PROPOSED DOG WASH FOUNTAIN REPLACEMENT

SITE FURNISHINGS SCHEDULE			
ITEM NUMBER	SITE ELEMENT	MANUFACTURER	DESCRIPTION
1	6' PARK BENCH WITH BACK	SUPERIOR INTERNATIONAL PRODUCTS (FORMERLY WEBCOAT) (WWW.SRPSITEAMENITIES.COM, 866-268-1701)	STANDARD ULTRALEISURE BECH WITH BACK MODEL: 8BW8ULPERF-POLY SEAT COLOR: GREEN FRAME COLOR: BLACK MOUNTING: IN-GROUND
2	8' PICNIC TABLE (STANDARD)	SUPERIOR INTERNATIONAL PRODUCTS (FORMERLY WEBCOAT) (WWW.SRPSITEAMENITIES.COM, 866-268-1701)	ULTRALEISURE RECTANGLE PORTABLE TABLE MODEL: 8BULPERF-POLY SEAT/ TABLE TOP COLOR: GREEN FRAME COLOR: BLACK MOUNTING: SURFACE (INSTALL PER MANUFACTURER INSTRUCTIONS) INSTALL 1 AT EACH SHELTER
3	8' PICNIC TABLE (ACCESSIBLE)	SUPERIOR INTERNATIONAL PRODUCTS (FORMERLY WEBCOAT) (WWW.SRPSITEAMENITIES.COM, 866-268-1701)	ULTRALEISURE ACCESSIBLE RECTANGLE PORTABLE TABLE MODEL: 8BWBPERFHDCPALT-POLY SEAT/ TABLE TOP COLOR: GREEN FRAME COLOR: BLACK MOUNTING: SURFACE (INSTALL PER MANUFACTURER INSTRUCTIONS) INSTALL 1 AT EACH SHELTER
4	DRINKING FOUNTAIN	MOST DEPENDABLE FOUNTAINS (WWW.MOSTDEPENDABLE.COM, 901-867-0039)	DRINKING FOUNTAIN WITH BOTTLE FILLER, PET FOUNTAIN AND HI/O DRINKING FOUNTAINS MODEL: 10140 SMSS W/ OPTIONAL PET FOUNTAIN AND RECESSED HOSE BIBB AND LOCK DOOR COLOR: GREEN MOUNTING: SURFACE
5	SHADE STRUCTURE	SUPERIOR SHELTER MONOSLOPE SHELTER (MODEL #MS) (WWW.SRPSHELTER.COM, 866-274-1297) -OR- POLYGON SHADE STRUCTURES MONOSLOPE STRUCTURE (MODEL #MSL) (WWW.POLYGON.COM, 616-888-3500)	MONOSLOPE STRUCTURE SIZE: 10' X 21' COLUMNS: SQUARE ROOF MATERIAL: MULTI-RIB ROOFING STRUCTURE COLOR: TBD BY OWNER ROOF COLOR: TBD BY OWNER MOUNTING STYLE: SURFACE
6	LIMESTONE BLOCKS		REFER TO DETAIL 5 ON SHEET L-501 FOR INFORMATION ON LIMESTONE BLOCKS
7	DOG COURSES	HTTPS://WWW.DOGPARKPRODUCT.COM/COURSES/	REFER TO DETAILS ON SHEET L-502 FOR INFORMATION ON DOG COURSES
8	DOG WASH FOUNTAIN	MOST DEPENDABLE FOUNTAINS (WWW.MOSTDEPENDABLE.COM, 901-867-0039)	DOG WASH FOUNTAIN MODEL 370 SM COLOR: GREEN MOUNTING STYLE: SURFACE



© 2024 GARVER, LLC
THIS DOCUMENT, ALONG WITH THE IDEAS AND DESIGNS CONVEYED HEREIN, SHALL BE CONSIDERED INSTRUMENTS OF PROFESSIONAL SERVICE AND ARE PROPERTY OF GARVER, LLC. ANY USE, REPRODUCTION, OR DISTRIBUTION OF THIS DOCUMENT, ALONG WITH THE IDEAS AND DESIGN CONTAINED HEREIN, IS PROHIBITED UNLESS AUTHORIZED IN WRITING BY GARVER, LLC OR EXPLICITLY ALLOWED IN THE GOVERNING PROFESSIONAL SERVICES AGREEMENT FOR THIS WORK.

1995 Midfield Road
Wichita, KS 67209
(316) 264-8008



Digitally Signed 04/29/2024

BY	DESCRIPTION	DATE	REV.

CITY OF WICHITA
DEPT. OF PARK & RECREATION
WICHITA, KANSAS

2024 PARK FACILITY
ENHANCEMENTS-
K9 ROOSTER DOG PARK
ENHANCEMENTS

SITE PLAN NORTH

JOB NO.: 2302060
DATE: MAY 2024
DESIGNED BY: BDT
DRAWN BY: HG

BAR IS ONE INCH ON ORIGINAL DRAWING
IF NOT ONE INCH ON THIS SHEET, ADJUST SCALES ACCORDINGLY.

DRAWING NUMBER
C-101

SHEET NUMBER