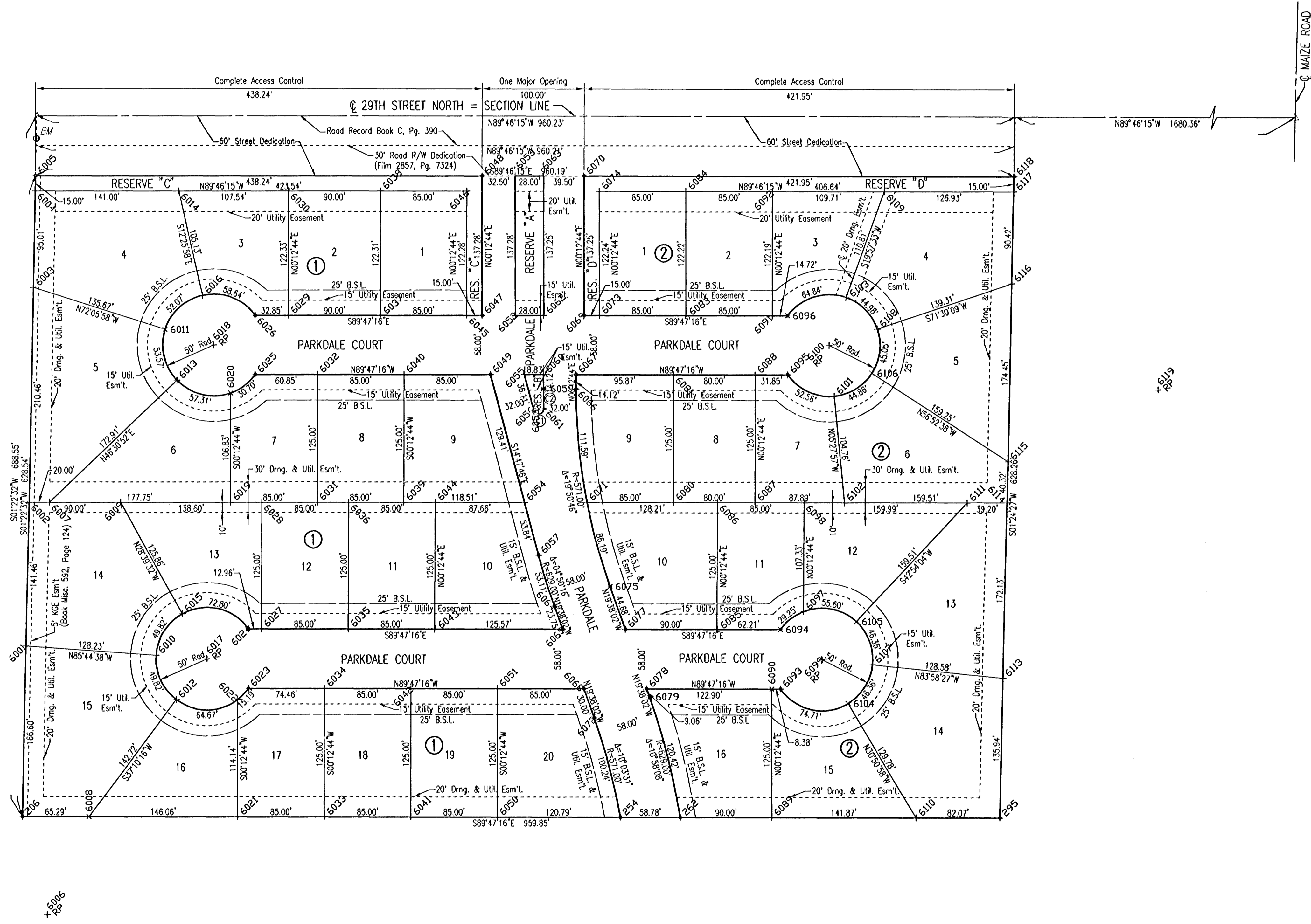


EVERGREEN 5TH

AN ADDITION TO WICHITA, SEDGWICK COUNTY, KANSAS



SCALE: 1" = 60'

BENCHMARK:
CITY OF WICHITA STANDARD 3" BRASS DISK SET IN CONCRETE,
FLUSH WITH THE GROUND, 0.5 MILES WEST OF MAIZE ROAD AT THE
SOUTH RIGHT OF WAY OF 29TH STREET NORTH AT POLE LINE.
ELEVATION: 178.29 CITY DATUM
1365.69 N.G.V.D.

PNT#	NORTHING	EASTING	PNT#	NORTHING	EASTING
206	9588.212031	2471.039426	6057	9842.327175	2978.440980
254	9586.036189	3058.175349	6058	9885.745821	2978.827512
262	9585.818375	3116.951070	6059	10005.196174	2983.587863
295	9584.654991	3430.882012	6060	10019.315379	2983.640186
6001	9754.766810	2475.038959	6061	9885.887199	2983.825507
6002	9896.166739	2478.434920	6062	10077.313128	2984.355121
6003	10106.582712	2483.487226	6063	10214.551397	2984.863744
6004	10201.568902	2485.768160	6064	9791.672151	2994.154462
6005	10216.567582	2486.128328	6065	9769.245127	3002.133908
6006	9491.055090	2495.130421	6066	10005.077588	3015.587643
6007	9896.112623	2498.434783	6067	10019.196792	3015.639967
6008	9587.970078	2536.328866	6068	9711.167947	3022.852968
6009	9895.853221	2568.432684	6069	10077.166747	3023.854850
6010	9745.250422	2602.910535	6070	10214.415016	3024.363473
6011	10064.883841	2612.588576	6071	9894.151371	3028.045901
6012	9701.637897	2622.562747	6072	9682.915998	3032.931864
6013	10015.105742	2623.890738	6073	10077.111160	3038.854747
6014	10201.004993	2626.770105	6074	10199.355130	3039.307766
6015	9785.414187	2628.793035	6075	9811.100649	3048.782279
6016	10098.341798	2649.403504	6077	9769.016617	3063.795777
6017	9741.539611	2652.772643	6078	9710.939437	3084.514837
6018	10049.514320	2680.168138	6079	9702.404496	3087.559681
6019	9895.451928	2678.179268	6080	9893.842375	3111.045317
6020	10002.283802	2678.574958	6081	10018.841517	3111.508546
6021	9587.428788	2682.392074	6083	10076.796164	3123.854163
6022	9701.571467	2682.815070	6084	10199.015191	3124.307090
6023	9712.388869	2683.395718	6085	9768.683092	3153.795159
6024	9770.388470	2693.610656	6086	9893.682234	3154.258358
6025	10020.363577	2700.791213	6087	9893.545909	3191.044768
6026	10078.363179	2701.006151	6088	10018.545051	3191.507997
6027	9770.340460	2706.565828	6089	9585.484850	3206.950452
6028	9895.339802	2707.029951	6090	9710.483991	3207.413681
6029	10078.241439	2713.856841	6091	10076.481169	3208.853580
6030	10200.574907	2734.310192	6092	10198.675253	3209.306414
6031	9895.138932	2761.178482	6093	9710.452951	3215.789771
6032	10020.138074	2761.641711	6094	9768.452553	3218.004710
6033	9587.113793	2767.391490	6095	10018.427025	3223.356326
6034	9712.112934	2767.854719	6096	10076.426627	3223.571264
6035	9710.025855	2781.585244	6097	9786.038390	3238.600659
6036	9895.074608	2792.029473	6098	9893.367238	3239.257804
6037	10077.907914	2823.856223	6099	9739.301810	3256.627784
6038	10200.214973	2824.309476	6100	10047.275884	3264.194339
6039	9894.823936	2846.177898	6101	9997.503231	3268.957008
6040	10019.823078	2846.641127	6102	9893.220198	3278.935693
6041	9586.798797	2852.390906	6103	10094.272728	3281.281756
6042	9711.797939	2852.854135	6104	9696.375954	3282.787029
6043	9769.710469	2876.584681	6105	9715.328243	3290.664594
6044	9894.096111	2877.021890	6106	10019.954174	3305.089441
6045	10077.592918	2908.855640	6107	9734.052957	3306.351517
6046	10199.875035	2909.308800	6108	10083.139146	3311.611181
6047	10077.537331	2923.855537	6109	10198.236486	3319.017331
6048	10214.814943	2924.364268	6110	9584.959119	3348.815346
6049	10019.508082	2931.640544	6111	9892.774333	3399.249233
6050	9586.483801	2937.390323	6113	9720.555024	3434.220913
6051	9711.482943	2937.853552	6114	9892.629066	3438.448566
6052	10077.476891	2956.355314	6115	9932.936339	3439.438668
6053	10214.694304	2956.364045	6108	10100.332688	3443.723690
6054	9894.384745	2964.690531	6117	10197.728666	3445.944504
6055	10019.385308	2964.770466	6118	10212.727512	3446.313003
6056	9984.468718	2973.993308	6119	10002.961558	3586.583722

×106 = COORDINATE POINT NO.

DSNR: MDK OPER: ILS SCALE: 1"=60.00
 Q:\2005\05415\001\05415-001-C-PLAT 10-06-2005 11:16:08 am

Revision		By	Date
LATERAL 11, MAIN 7 OF THE NORTHWEST INTERCEPTOR SEWER PLAT JAMES L. ARMOUR, P.E. - CITY ENGINEER CITY OF WICHITA PROJECT NO. 468-83900 Professional Engineering Consultants, P.A. 303 S. TOPEKA • WICHITA, KANSAS 67202 316-262-2691 • FAX 316-262-3003			
Designed by	MDK	Job No.	35-05415-1-042
Drawn by		Date	JULY 2005
			Sht. 3 of 14