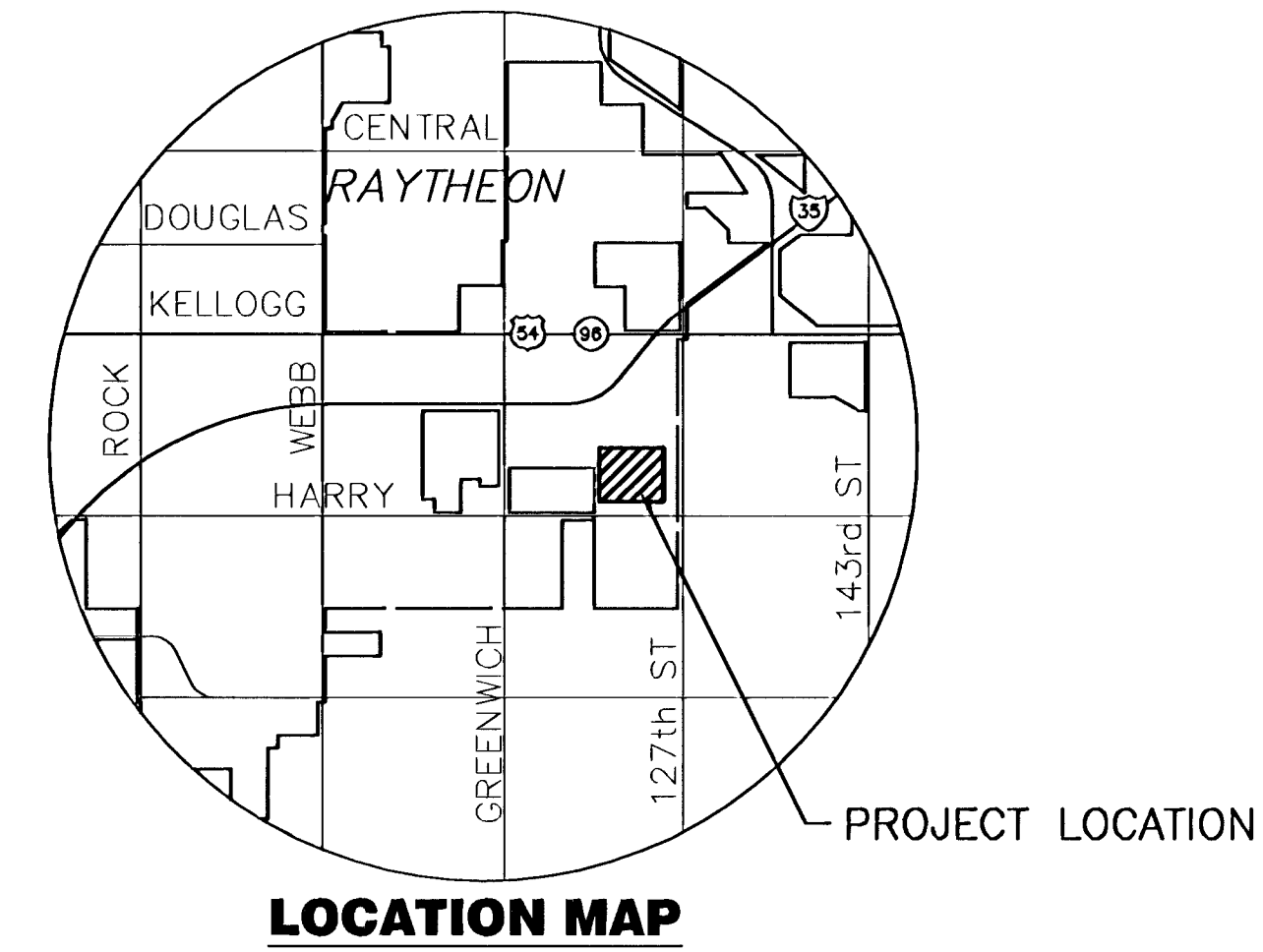


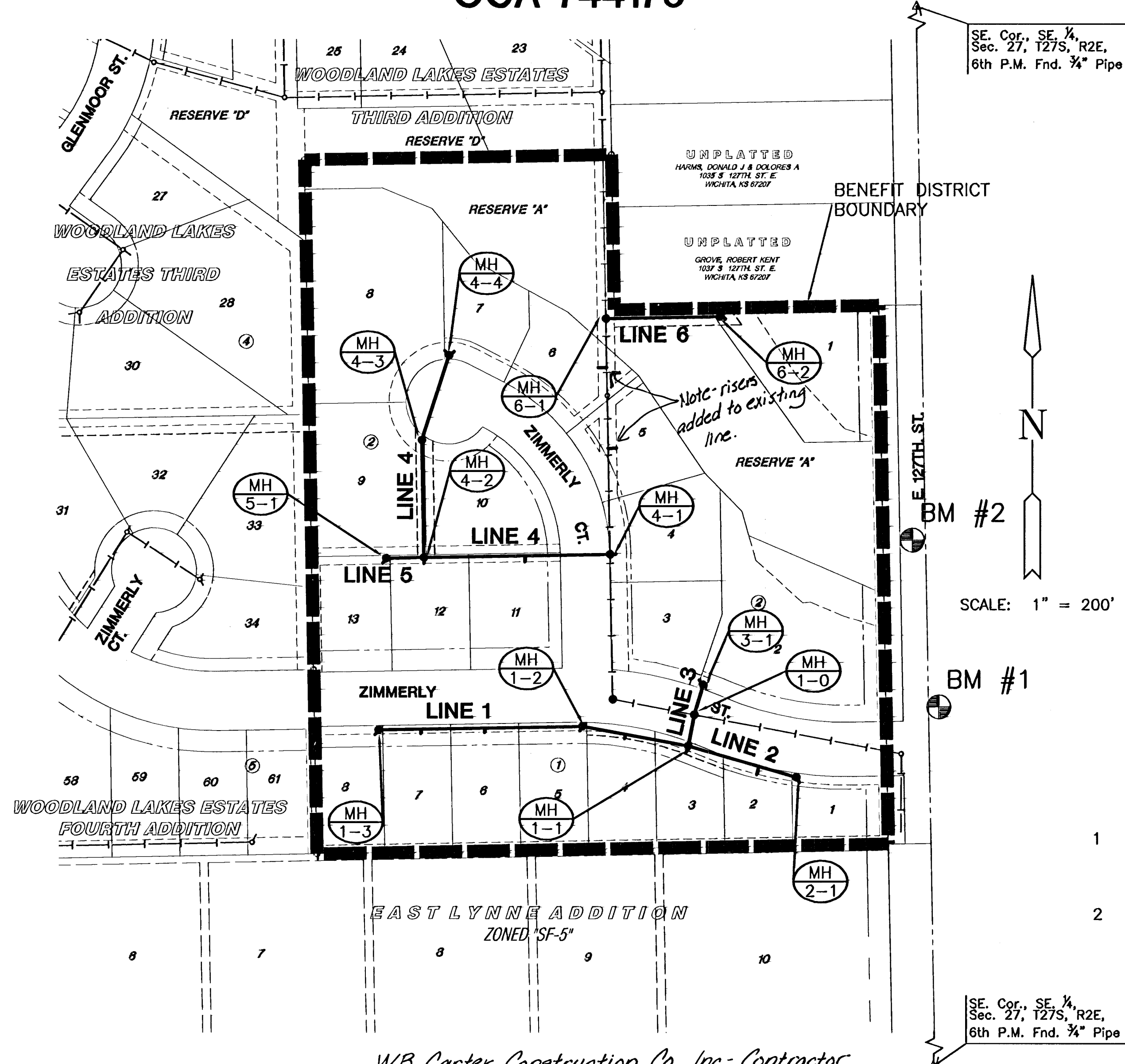
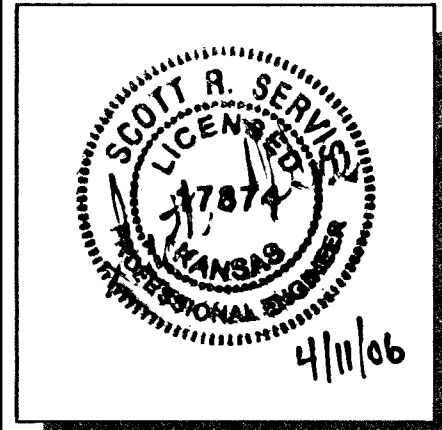
GENERAL NOTES

- UNLESS SHOWN OR STATED OTHERWISE ON THESE DRAWINGS, MATERIALS AND CONSTRUCTION SHALL BE IN ACCORDANCE WITH CITY OF WICHITA STANDARD SPECIFICATIONS.
- THE CONTRACTOR SHALL BE RESPONSIBLE FOR PRESERVING PROPERTY IRONS. THE CONTRACTOR WILL BE REQUIRED TO RE-ESTABLISH ANY PROPERTY IRONS WHICH ARE DAMAGED OR DESTROYED BY HIS CONSTRUCTION OPERATIONS. SUCH IRONS SHALL BE RE-ESTABLISHED BY A LICENSED LAND SURVEYOR IN ACCORDANCE WITH STATE LAWS.
- EXISTING UTILITIES AND THEIR LOCATIONS, AS SHOWN ON THE PLANS REPRESENT THE BEST INFORMATION OBTAINABLE FOR DESIGN. LOCATION INFORMATION HAS BEEN OBTAINED FROM THE VARIOUS UTILITY COMPANIES AND IS EITHER FROM COMPANY RECORD DRAWINGS OR COMPANY PROVIDED FIELD LOCATIONS. THE PLAN LOCATIONS SHOWN ARE NOT GUARANTEED. ADDITIONAL EXISTING UTILITIES MAY ALSO BE ENCOUNTERED.
- CONTRACTOR WILL BE REQUIRED TO PROVIDE A MINIMUM ADVANCE NOTICE OF FORTY-EIGHT (48) HOURS TO UTILITY COMPANIES PRIOR TO STARTING ANY EXCAVATION AS FOLLOWS:
 KANSAS ONE-CALL 1-800-344-7233 or 687-2470 (LOCAL WICHITA) 1-800-344-7233 or 687-2470 (LOCAL WICHITA)
- THE CONTRACTOR MUST NOTIFY THE FOLLOWING IN CASE OF AN EMERGENCY:
 SOUTHWESTERN BELL TELEPHONE COMPANY 1-800-734-7630
 CABLEVISION 262-0661
 K.G.&E. (GAS & ELECTRIC) 383-8600
 CITY OF WICHITA WATER & SEWER MAINTENANCE 262-6000
- RUBBLE FROM THE REMOVAL OF MISCELLANEOUS STRUCTURES AND EXCESS EXCAVATION WHICH IS TO BE WASTED SHALL BE DISPOSED OF ON SITES TO BE PROVIDED BY THE CONTRACTOR. THESE SITES SHALL BE APPROVED BY THE ENGINEER AS TO SUITABILITY, APPEARANCE AND SITE LOCATION. LOCATIONS THAT, IN THE OPINION OF THE ENGINEER, WILL LEAVE AN UNSIGHTLY APPEARANCE WILL NOT BE APPROVED. ALL DISPOSAL SITES MUST BE APPROVED BY THE KANSAS DEPARTMENT OF HEALTH AND ENVIRONMENT. MATERIAL EITHER STOCKPILED OR DISPOSED OF IN A FLOOD PLAIN WOULD REQUIRE A KANSAS STATE BOARD OF AGRICULTURE PERMIT. ANY MATERIAL DUMPED IN WATERS OF THE UNITED STATES OR WETLANDS IS SUBJECT TO U.S. CORPS OF ENGINEERS PERMITTING REGULATIONS. ANY MATERIAL BURIED OR STOCKPILED BEYOND APPROVED CONSTRUCTION LIMITS WOULD REQUIRE ADDITIONAL ARCHAEOLOGICAL INVESTIGATIONS UNLESS BURIED IN A PREVIOUSLY APPROVED BORROW LOCATION.
- COST OF EXCAVATION, HAULING, AND DUMPING OF EXCESS EXCAVATION SHALL BE SUBSIDIARY TO THE PROJECT.
- A PORTION OF EXCESS EXCAVATED MATERIAL SHALL BE MOUNDED AROUND MANHOLES WHICH EXTEND MORE THAN ONE (1) FOOT ABOVE THE EXISTING GROUND. SUCH MOUNDS SHALL BE CONSTRUCTED WITH A SIX (6) FOOT DIAMETER FLAT TOP WITH 4 TO 1 SIDE SLOPES DOWN TO THE ORIGINAL GROUND. THE ELEVATION OF THE FLAT TOP OF THE MOUND SHALL BE 0.4 FOOT BELOW THE TOP OF THE MANHOLE.
- ALL STUBS AND PLUGGED PIPES SHALL BE LOCATED WITH GREEN PLASTIC TAPE IN THE SAME MANNER AS RISERS.
- CONNECTING TO EXISTING MANHOLES:
 PRIOR TO LAYING SEWER LINES USING EXISTING STUBS IN EXISTING MANHOLES, THE CONTRACTOR SHALL EXPOSE AND VERIFY THE ELEVATION, GRADE AND ALIGNMENT OF EXISTING STUBS AND NOTIFY THE ENGINEER OF ANY DEVIATION FROM THE PLAN. WHERE CONNECTION TO AN EXISTING MANHOLE THAT DOES NOT HAVE AN EXISTING STUB OR THE STUB IS UNUSABLE DUE TO ELEVATION GRADE OR ALIGNMENT, THE CONTRACTOR SHALL BORE CUT INTO EXISTING MANHOLE WALL TO MAKE CONNECTION USING APPROVED WATER STOP GASKET, AND RESHAPE THE EXISTING MANHOLE INVERT TO PROVIDE SMOOTH FLOW. THE COST OF CONNECTING TO EXISTING MANHOLES IS INCIDENTAL TO THE PROJECT.
- ALL DISTURBED AREAS TO BE SEEDDED WITH RYE GRASS AT A RATE OF 200 LBS. PER ACRE WITHIN 10 DAYS OF CONSTRUCTION. CONTRACTOR TO PREPARE GROUND PER CITY SPECIFICATIONS. COST IS SUBSIDIARY TO SITE PREPARATION AND RESTORATION.
- ALL EXISTING TREES ARE AN IMPORTANT ASSET TO THE DEVELOPER. NO TREE OF ANY SIZE SHALL BE REMOVED UNLESS NOTED OTHERWISE. THE CONTRACTOR SHALL COORDINATE TREE REMOVAL WITH MKEC.
- EQUIPMENT AND CONSTRUCTION MATERIALS SHALL REMAIN OUT OF AND AWAY FROM TREE DRILINES SO AS NOT TO COMPACT THE ROOT ZONE OR DAMAGE THE TREE. CONSULT WITH ENGINEER BEFORE GRADING NEAR DRILINE OF TREES.
- ANY TREE THAT MUST HAVE BRANCHES REMOVED SHALL BE TRIMMED WITH A SHARP INSTRUMENT/TOOL THAT IS INTENDED FOR SUCH OPERATION. GAIN APPROVAL FROM MKEC BEFORE REMOVING BRANCHES FROM ANY TREE. KNOCKING BRANCHES OFF WITH A BACKHOE OR OTHER SIMILAR MACHINES IS NOT ACCEPTABLE!
- CONTRACTOR SHALL MAINTAIN EROSION CONTROL THROUGHOUT CONSTRUCTION.
- CONTRACTOR TO INSTALL PLASTIC SEWER MANHOLE MARKERS. SEWER DEPARTMENT WILL PROVIDE THE MATERIALS. COST TO INSTALL MARKERS SUBSIDIARY TO MANHOLES.

SANITARY SEWER MAIN PLANS
THE TIMBERLANDS ADDITION
LATERAL 385 FOUR MILE CREEK SEWER
PROJECT NO. 468-84093
CITY OF WICHITA, KANSAS
JIM ARMOUR, CITY ENGINEER
OCA 744179



MKEC
 ENGINEERING
 CONSULTANTS, INC.
 411 N. WEBB ROAD
 WICHITA, KS. 67206
 316-684-9600



INDEX TO DRAWINGS

SHEET NO.	DESCRIPTION
1	TITLE SHEET
2	MANHOLE DETAILS
3	BUBBLE MAP
4	VERTICAL RISER DETAILS
5	LINE 1, 2, & 3
6	LINE 4, 5, & 6
7-8	EROSION CONTROL
9	FINAL PLATS

BENCHMARKS

ELEVATION	DESCRIPTION
1 1329.72	Railroad spike in West side of 24" tree on Northeast corner 127th Street East and Zimmerly, 30' East of the centerline of 127th Street East and on the North line of Zimmerly extended.
2 1346.58	Chiseled square on East end of North headwall of RCB, 31' East and 11' North of the Center of Section 27, Township 27 South, Range 2 East.

*WB Carter Construction Co, Inc- Contractor
 Wood, City- Inspector
 Released 8/31/06
 As-Built
 Risers & Stubs
 .pdf by JDL 10/27/06*

SANITARY SEWER PLANS
THE TIMBERLANDS ADD.

TITLE SHEET
 SHEET TITLE
 468-84093
 PROJECT NUMBER

DESIGN BY SRS
 DRAWN BY BEL/DM
 CHECKED BY GJA

ISSUED APRIL 2006
 REVISED

SHEET NO.
 1 of 9