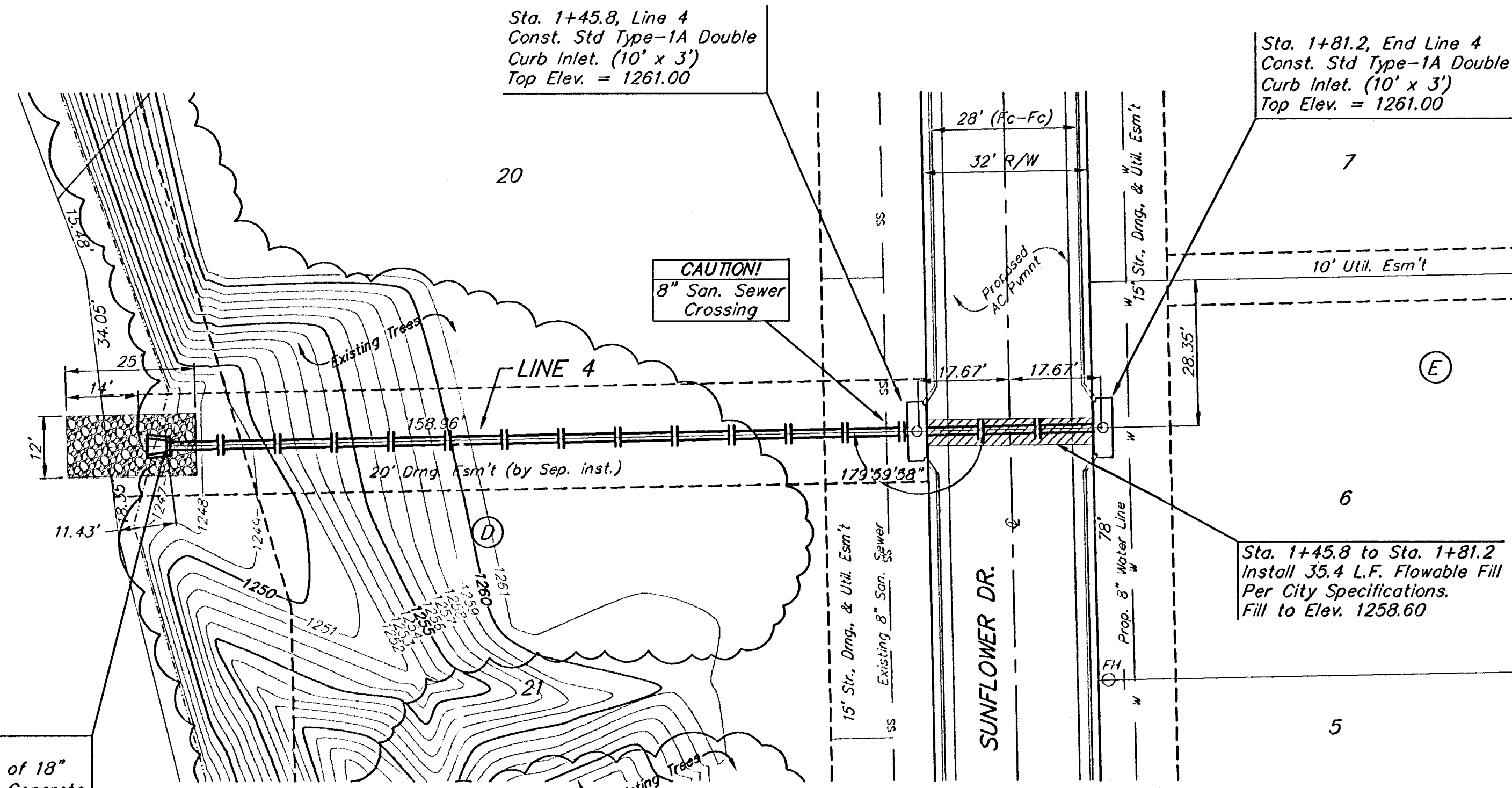


BENCHMARK:
 Arkansas River bridge & 63rd St. S. City of
 Wichita Benchmark Disc. SW Cor. of bridge,
 top of hubguard, 500'± E. of Grove.
 Elev. = 1269.95 NGVD29 (per City record)
 Brass plate on the NE wingwall of Arkansas
 River bridge & 63rd St. S.
 Elev. = 1267.48 NGVD29 (per County record)

POND DATA:
 STATIC POOL ELEVATION: 1246.6 NGVD29
 100 YEAR DWS: 1256.0 NGVD29

Existing Lake
 RESERVE "B"

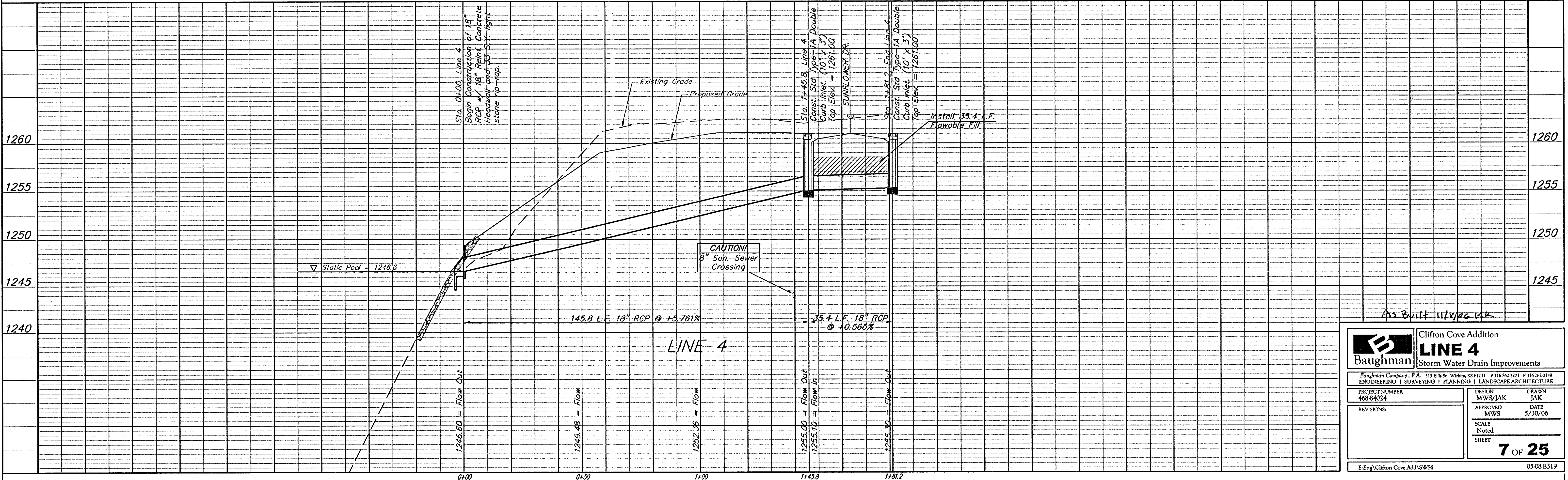
Sta. 0+00, Line 4
 Begin Construction of 18"
 RCP w/ 18" Reinf. Concrete
 Headwall and 33 S.Y. light
 stone rip-rap.



CLIFTON COVE ADDITION

Remove Existing Trees Only as **ABSOLUTELY**
 Necessary for Construction. Trees Not in
 Direct Conflict With Proposed New
 Construction Shall Remain And Be Protected
 From Damage. Cost to be included in Bid
 Item "Site Clearing & Restoration"

SCALE:
 1" = 20' HORIZONTAL
 1" = 5' VERTICAL
 • = IRON



As Built 11/18/2014

Baughman		Clifton Cove Addition LINE 4 Storm Water Drain Improvements	
Baughman Company, P.A. 315 Ellis St. Wichita, KS 67211 P 3162627271 F 3162620149 ENGINEERING SURVEYING PLANNING LANDSCAPE ARCHITECTURE			
PROJECT NUMBER 4684024	DESIGN MWS/JAK	DRAWN JAK	
REVISIONS	APPROVED MWS	DATE 5/30/06	
	SCALE Noted	SHEET	7 OF 25
E:\Eng\Clifton Cove Add\SW6			05-08-E319