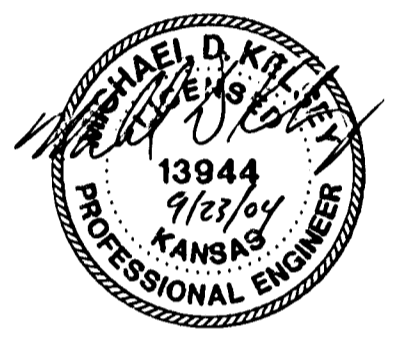
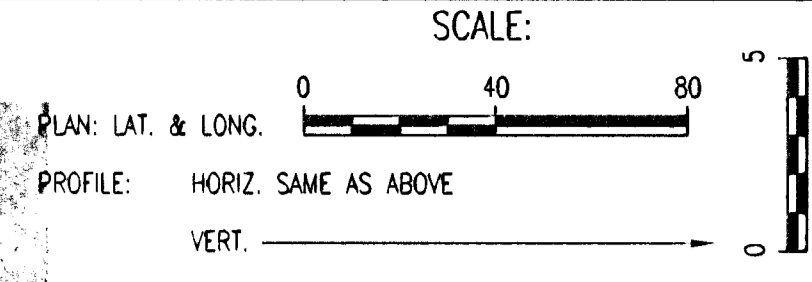
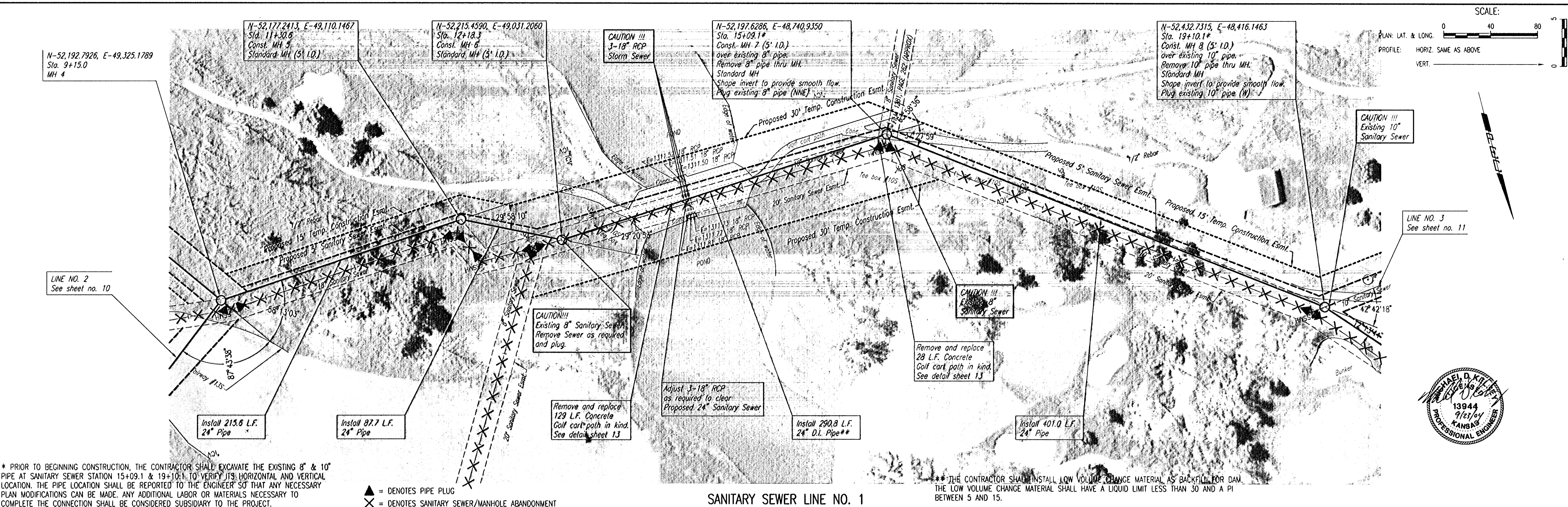


DATE	
BY	
CHECKED	
PLAN	

DATE	
BY	
CHECKED	
PROFILE	

DSNR: OPER: JCA SCALE: 1"=40.00
 Q:\2002\02633\sspp02 09-24-2004 10:39:49 am

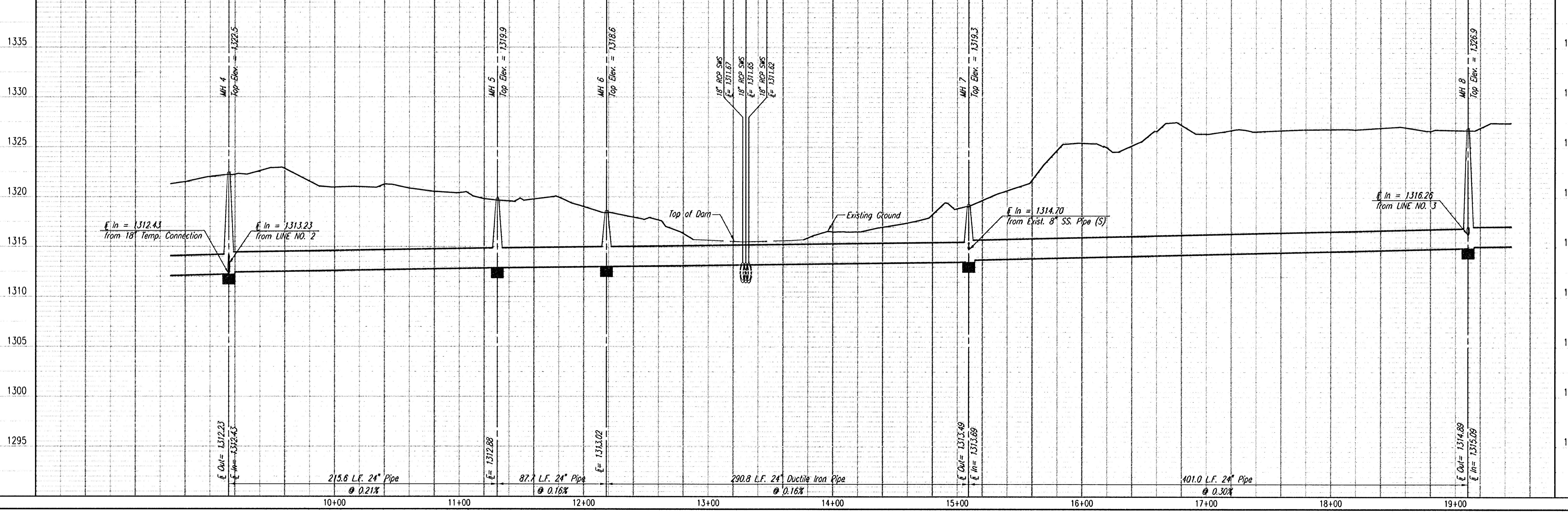


* PRIOR TO BEGINNING CONSTRUCTION, THE CONTRACTOR SHALL EXCAVATE THE EXISTING 8" & 10" PIPE AT SANITARY SEWER STATION 15+09.1 & 19+10.1 TO VERIFY ITS HORIZONTAL AND VERTICAL LOCATION. THE PIPE LOCATION SHALL BE REPORTED TO THE ENGINEER SO THAT ANY NECESSARY PLAN MODIFICATIONS CAN BE MADE. ANY ADDITIONAL LABOR OR MATERIALS NECESSARY TO COMPLETE THE CONNECTION SHALL BE CONSIDERED SUBSIDIARY TO THE PROJECT.

▲ = DENOTES PIPE PLUG
 X = DENOTES SANITARY SEWER/MANHOLE ABANDONMENT

SANITARY SEWER LINE NO. 1

** THE CONTRACTOR SHALL INSTALL LOW VOLUME CHANGE MATERIAL AS BACKFILL FOR DAM. THE LOW VOLUME CHANGE MATERIAL SHALL HAVE A LIQUID LIMIT LESS THAN 30 AND A PI BETWEEN 5 AND 15.



SANITARY SEWER LINE NO. 1

MAIN 17, FOUR MILE CREEK
 CRESTVIEW SEWER - PHASE 1

Professional Engineering Consultants, P.A.
 303 S. TOPEKA - WICHITA, KANSAS 67202
 316-262-8591 - FAX 316-262-8685

Designed By: MDK
 Drawn By: JCA

Job No. 35-02633-3687
 Date: JULY 2004

Sheet 5 of 23

JAMES L. ARMOUR, P.E. - ACTING CITY ENGINEER
 CITY OF WICHITA, PROJECT NO. 468-83903