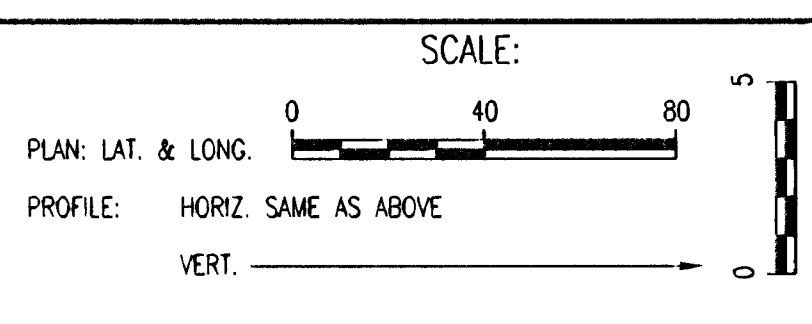
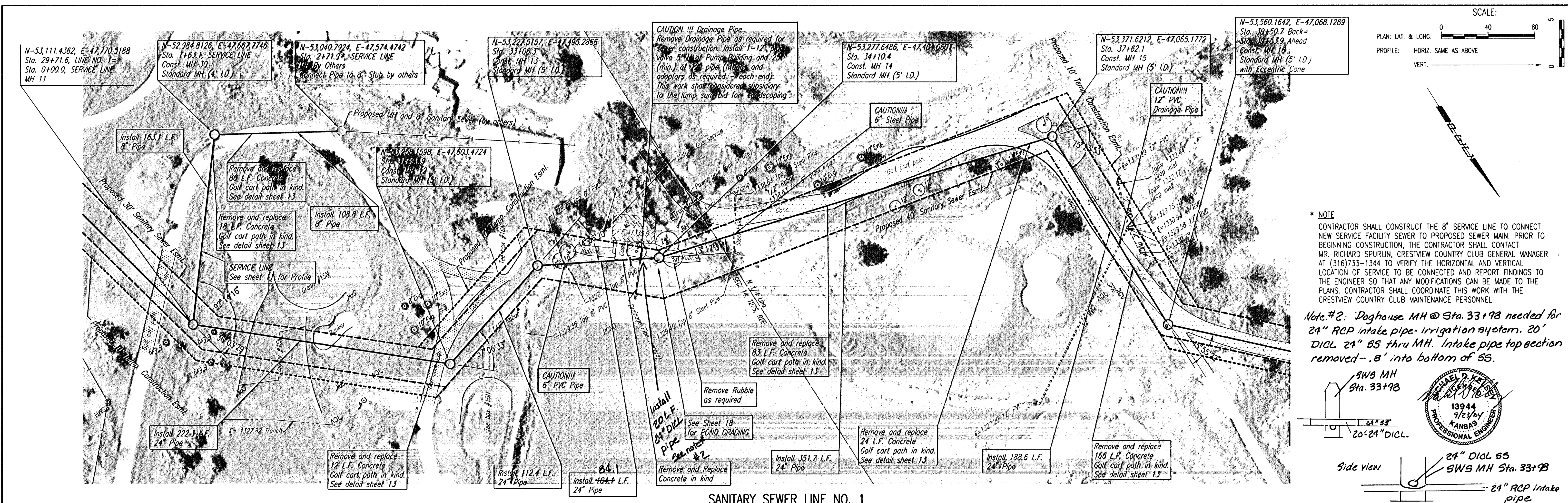


PLAN	CHECKED	DATE

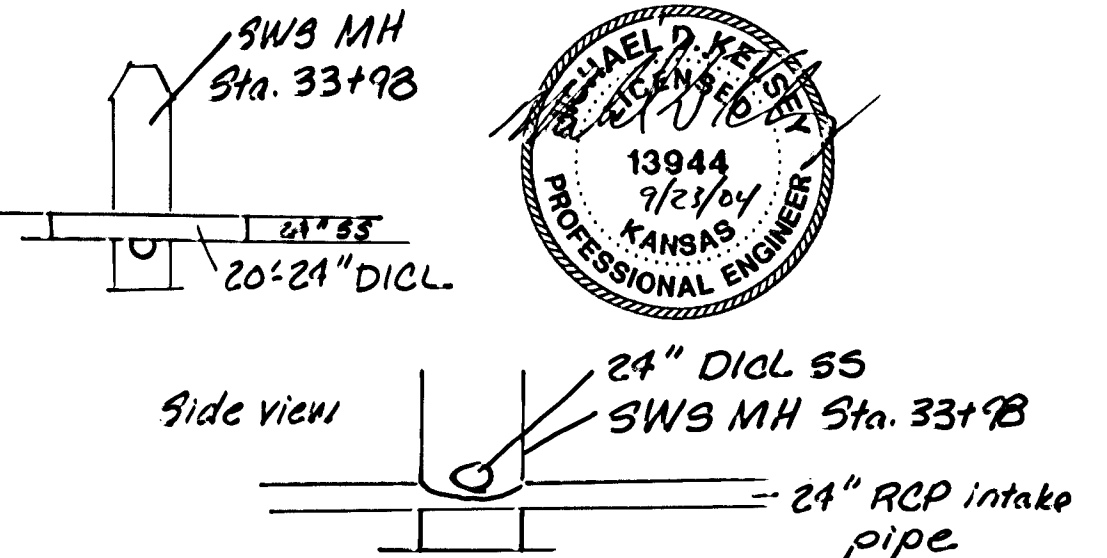
PROFILE	CHECKED	DATE

DSNR: OPER: JGA SCALE: 1"=40.00
 01/2002/026333\sepp04_09-24-2004 11:21:12 am

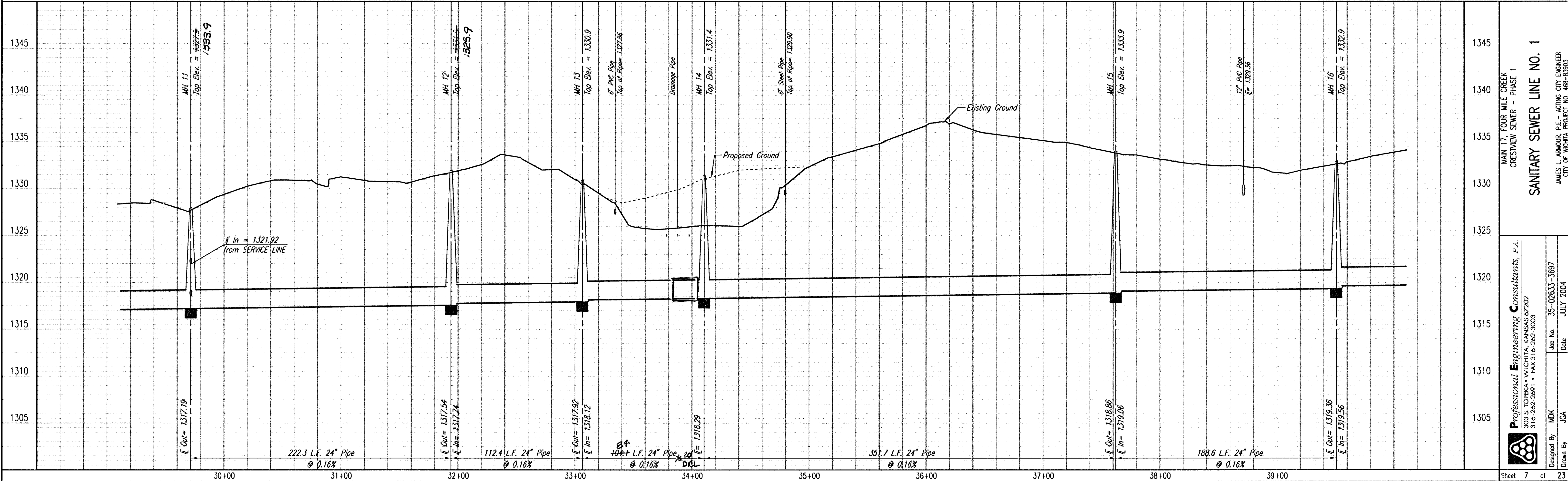


*** NOTE**
 CONTRACTOR SHALL CONSTRUCT THE 8" SERVICE LINE TO CONNECT NEW SERVICE FACILITY SEWER TO PROPOSED SEWER MAIN. PRIOR TO BEGINNING CONSTRUCTION, THE CONTRACTOR SHALL CONTACT MR. RICHARD SPURLIN, CRESTVIEW COUNTRY CLUB GENERAL MANAGER AT (316)733-1344 TO VERIFY THE HORIZONTAL AND VERTICAL LOCATION OF SERVICE TO BE CONNECTED AND REPORT FINDINGS TO THE ENGINEER SO THAT ANY MODIFICATIONS CAN BE MADE TO THE PLANS. CONTRACTOR SHALL COORDINATE THIS WORK WITH THE CRESTVIEW COUNTRY CLUB MAINTENANCE PERSONNEL.

Note #2: Doghouse MH @ Sta. 33+98 needed for 24" RCP intake pipe- irrigation system. 20' DICL 24" SS thru MH. Intake pipe top section removed-.8' into bottom of SS.



SANITARY SEWER LINE NO. 1



Professional Engineering Consultants, P.A.
 303 S. TOPEKA • WICHITA, KANSAS 67202
 316-262-2691 • FAX 316-262-3003

Professional Engineer
 JAMES L. ARMOUR, P.E. - ACTING CITY ENGINEER
 CITY OF WICHITA PROJECT NO. 488-63903

Job No. 35-02633-3687
 Date JULY 2004

Designed By MDK
 Drawn By JCA

Sheet 7 of 23