

# Street Paving for Ridgpoint with Incidental SWS Improvements

to serve

## SILVERTON ADDITION - PHASE I

- Nickelton Cir. (Lots 1-20, Block A), from the south line of Ridgpoint, south to and including the cul-de-sac
- Nickelton Ct. (Lots 7-12, Block B), from the east line of Nickelton, east to and including the cul-de-sac
- Nickelton Ct. (Lots 1-6, Block B), from the east line of Nickelton, east to and including the cul-de-sac
- Nickelton Cir. (Lots 1-21, Block C), from the north line of Jamesburg, north to and including the cul-de-sac
- Nickelton Ct. (Lots 1-6, Block C), from the east line of Nickelton Cir., east to and including the cul-de-sac
- Nickelton, from the north line of Ridgpoint, north to the south line of Jamesburg
- Jamesburg, from the east line of Nickelton, east to the east line of the plat
- Ridgpoint, from the east line of Nickelton, east to the east line of the plat

### CITY OF WICHITA, KANSAS

James L. Armour, P.E. City Engineer

Project Number

472-84459

O.C.A. Number

766152

Scale: 1" = 150'

### GENERAL NOTES:

- Contractor will be required to provide notice to utility companies a minimum of forty-eight (48) hours prior to any excavation, as follows:  
Kansas One-Call 687-2470  
The Contractor must notify the following in case of an emergency:  
Cox Communications 262-4270  
Kansas Gas Service 1-888-482-4950  
Westar Energy 383-8650  
Aquila Energy 1-800-303-0357  
SBC 268-2245  
City of Wichita Water Dept. 268-4563  
City of Wichita Sewer Maint. 268-4024  
City of Wichita Storm Sewer Maint. 268-4090  
City of Wichita Traffic Maint. 268-4034  
Conoco Phillips Pipeline Co. 1-877-267-2290  
Southern Star Pipeline Co. 529-6600  
Kinder-Morgan Pipeline Co. 1-888-844-5658
- Utility service lines, poles, valve boxes, meters, and etcetera are to be adjusted as necessary by others prior to construction unless the plans specifically call for their adjustment by the Contractor or unless the plans specifically identify a utility to be adjusted by its owner during construction. Existing utilities and their location, as shown on the plans, represent the best information obtainable for design. The Contractor will be required to work around existing utilities within the right-of-way which do not conflict with proposed construction.
- Rubble from the removal of miscellaneous structures and excess excavation which is to be wasted shall be disposed of on sites to be provided by the Contractor. These sites shall be approved by the Engineer as to suitability, appearance and site location. Locations, in the opinion of the Engineer, that will leave an unsightly appearance will not be approved. All disposal sites must be approved by the Kansas Department of Health and Environment. Material either stockpiled or disposed of in a flood plain would require a Kansas State Board of Agriculture permit. Any material dumped in waters of the United States or wetlands is subject to U.S. Corps of Engineers permitting regulations. Any material buried or stockpiled beyond approved construction limits would require additional archaeological investigations unless buried in a previously approved borrow location.
- Trees and shrubs in public right-of-way which are in direct conflict with proposed new construction shall be removed by the Contractor with the Engineer's approval. Trees and shrubs which are not in direct conflict with proposed new construction shall be saved and protected from damage.
- The Contractor shall give all property owners and/or tenants of developed property abutting the construction of this project a minimum of ten (10) days notice prior to start of construction.
- The Contractor shall be responsible for preserving property irons. The Contractor will be required to re-establish any property irons which are damaged or destroyed by his construction operations. Such irons shall be re-established by a licensed land surveyor in accordance with state laws.
- All excess excavation shall remain on-site and shall be spread evenly on the lots outside of easements & R/W's
- All existing and proposed erosion control measures including silt fencing, erosion control mat, straw bales, inlet barriers, and const. entrance shall be maintained throughout construction by the contractor and until project is accepted by the City of Wichita. The on-site engineer shall complete weekly reports on the status of erosion control measures. The contractor shall be required to comply with maintenance and/or replacement of erosion control measures as determined by the on-site engineer until project is accepted by City of Wichita.  
Seed: Kansas Premium Fescue Blend: 8 lbs./1000 sq. ft.  
Mulch: Prairie Hay: 2 tons/acre  
Fertilizer: 12-24-12: 850 lbs./acre
- All costs associated with seeding, mulching, and fertilizing shall be included in bid item "Project Seeding." All seeding operations shall conform to City of Wichita Standard Specifications.
- All other areas disturbed during construction shall be seeded at 300 lbs./acre with Rye Grass immediately following construction in that area. Contractor shall prepare ground per City Specifications.
- A saw cut of at least one-half the depth of existing surface courses or one-fourth the depth of the existing total pavement thickness shall be provided at locations where proposed construction abuts the existing surface course or pavement for which partial removal of that surface or pavement is required. Sawed joint to facilitate removal within three (3) feet of existing joints will not be permitted and for such instances the limits of removal shall extend to the existing joint. Such saw cuts will not be paid for directly and this cost shall be considered as subsidiary to the removal of the surface or pavement.
- The contractor shall adjust valve boxes as necessary to match proposed grade. Cost to be included in bid item, "Site Clearing & Restoration."
- Street R/W's and Easements will be brought to grade ±0.2' prior to construction with the Mass Grading project. Cross Sections reflect proposed grade by Mass Grading Contractor. Contractor of this project shall satisfy himself with the earthwork quantities as bid for Excavation and Compacted Fill and Easement Grading prior to bidding. No additional payments or change orders for earthwork will be accepted.
- The developer for this project is Paul E. Kelsey, (316) 722-1077

### Sheet Index

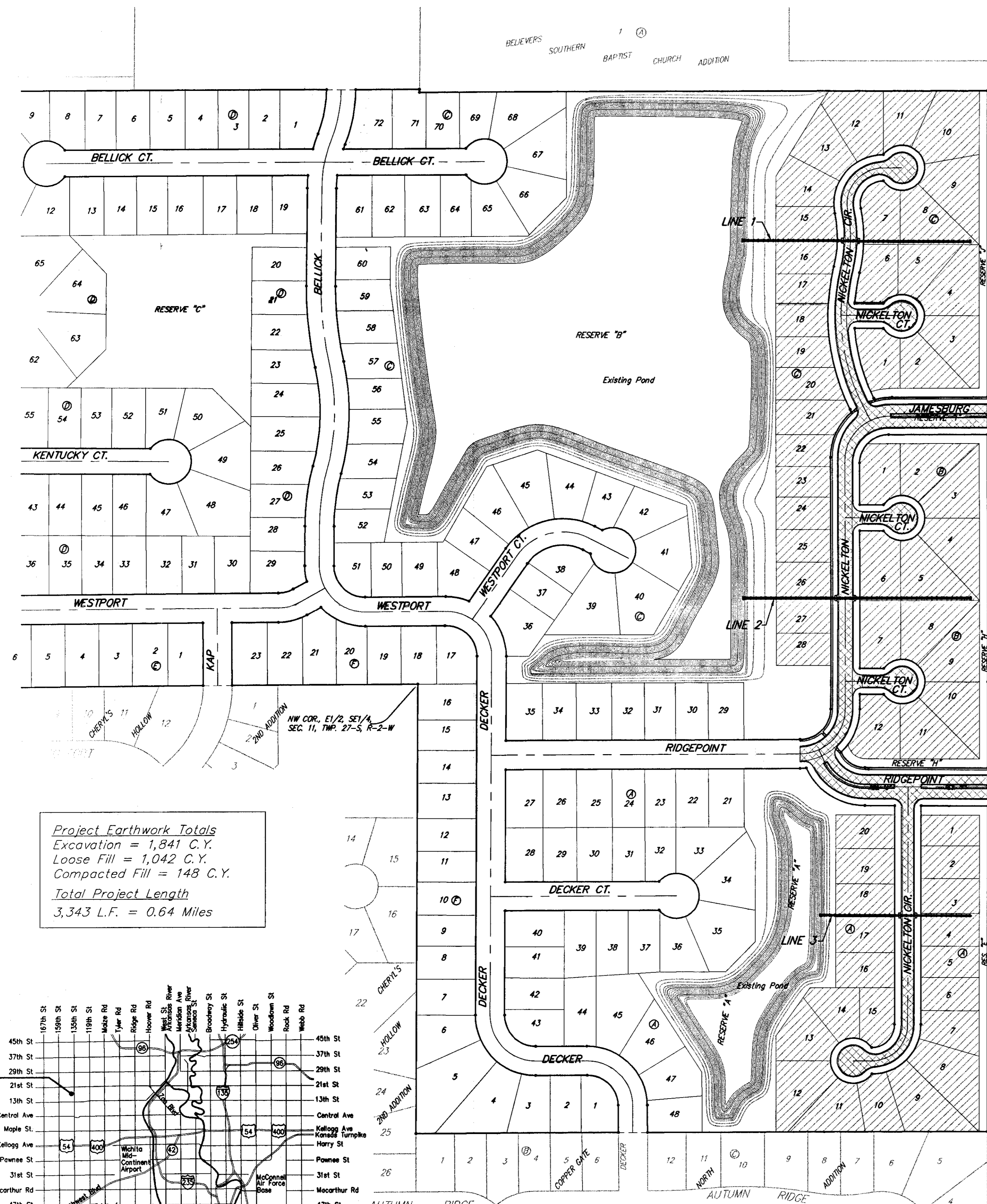
Title Sheet	1
35' Pavement Detail	2
29' Pavement Detail	3
Sign Detail	4
Miscellaneous Details	5
Entrance Detail	6
Ridgpoint	7
Nickelton Cir. (Lots 1-20, Block A)	8-9
Nickelton/Jamesburg	10-12
Nickelton Ct. (Lots 7-12, Block B)	13
Nickelton Ct. (Lots 1-6, Block B)	14
Nickelton Cir. (Lots 1-21, Block C)	15-16
Nickelton Ct. (Lots 1-6, Block C)	17
SWS Line 1	18
SWS Line 2	19
SWS Line 3	20
Std. Type 1A Double Inlet Detail	21
Special Yard Inlet Detail	22
Standard Drop Inlet Detail	23
Headwall Detail	24
Erosion Control/Esmt. Grading Plan	25-26
Erosion Control BMP Details	27-30
Coordinate Sheet	31-32
Earthwork Cross Sections	33-43
Copy of Plat	44

### Benchmarks

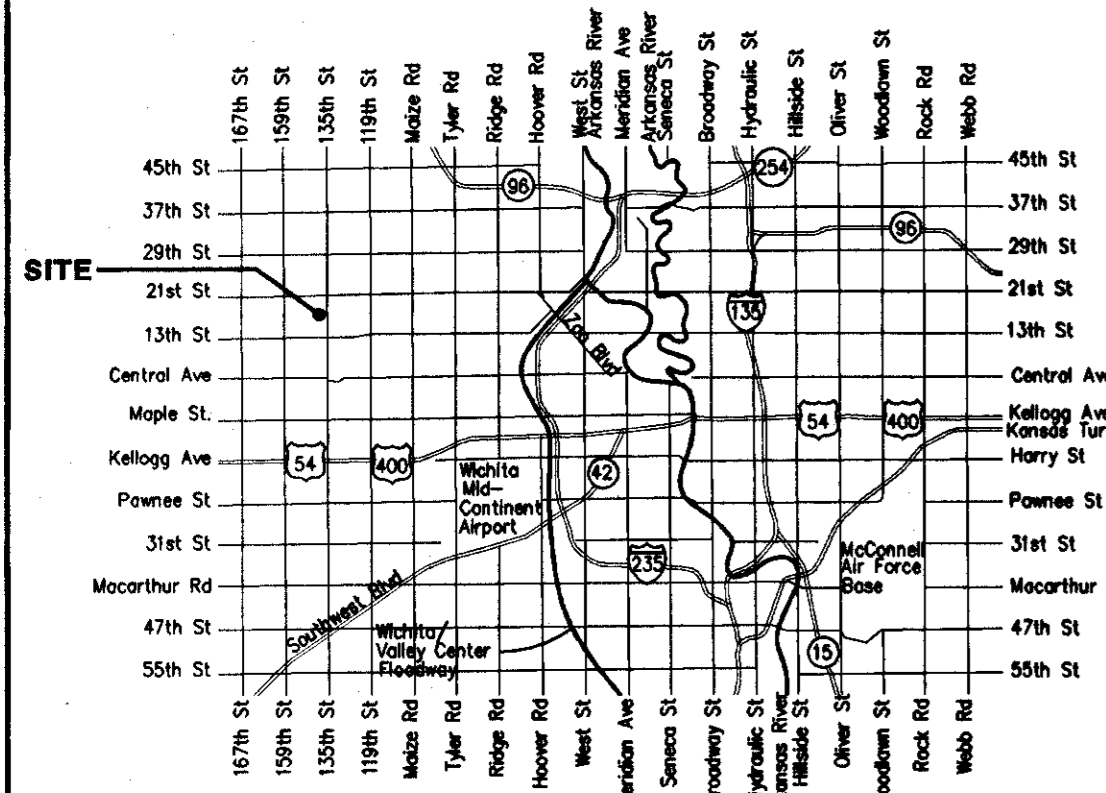
135th St. W. & 13th St. N. - City of Wichita Disc at Southwest Corner of Intersection, 30.00± S. of E. of 13th St. N. 35.00± W. of E. of 135th St. W. Elev. = 1355.65 MSL

"□" Cut in Top of Curb 10' South of end of Existing Pavement, East Curb adjacent to Lot 12, Block D, Copper Gate North Addition. Elev. = 1362.13 MSL

BM Disc in top Curb Adjacent to Fire Hydrant at E. End of N. Curb Return of Kiwi & Decker, adjacent to Lot 16, Block D, Copper Gate North Addition. Elev. = 1361.04 MSL



**Project Earthwork Totals**  
Excavation = 1,841 C.Y.  
Loose Fill = 1,042 C.Y.  
Compacted Fill = 148 C.Y.  
**Total Project Length**  
3,343 L.F. = 0.64 Miles



Vicinity Map

Benefit District  
Proposed Streets