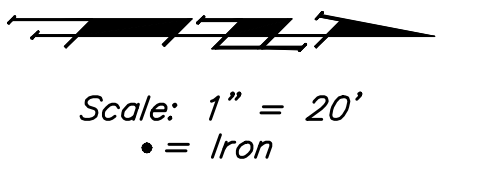


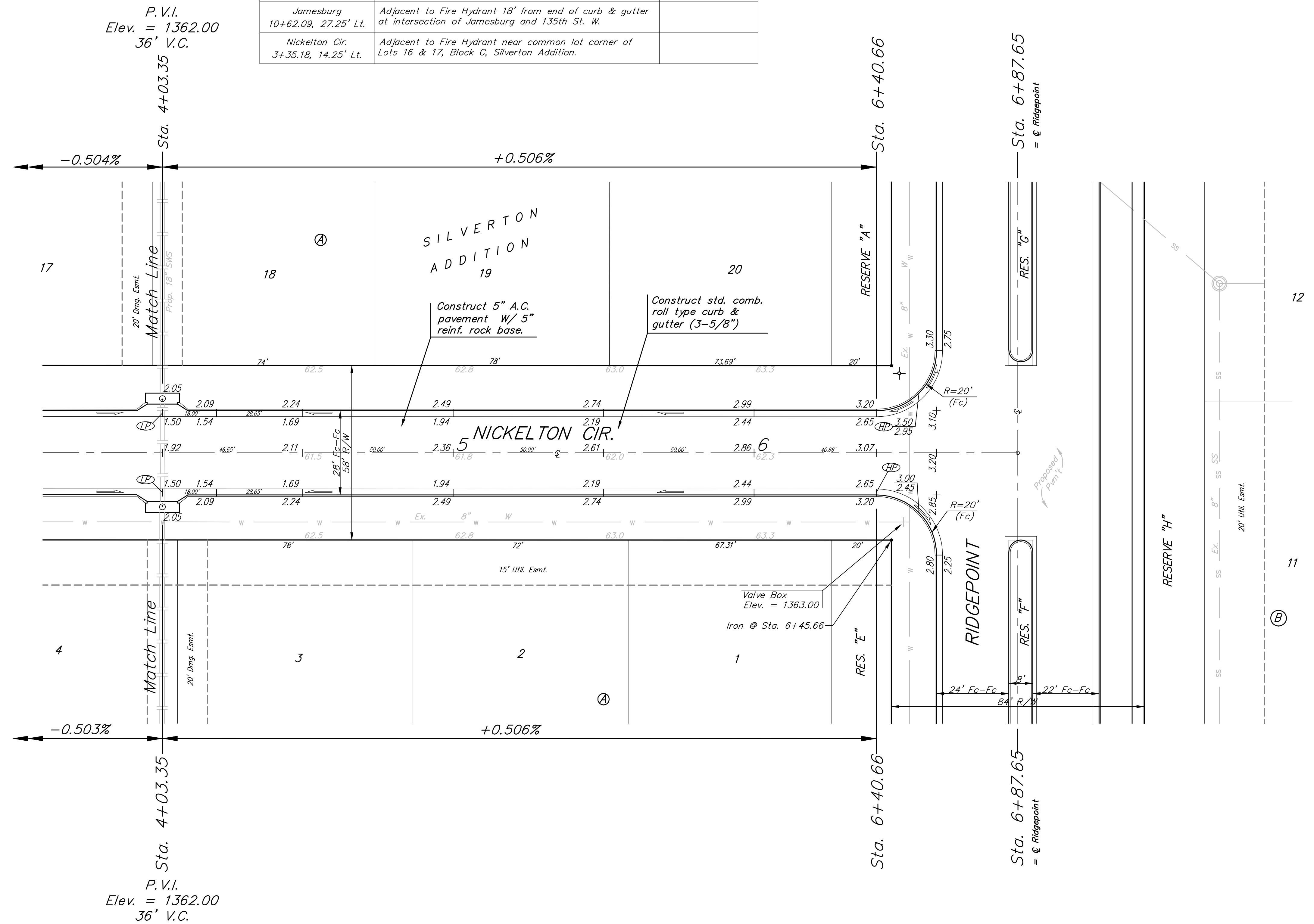
BENCHMARKS:
 135th St. W. & 13th St. N. - City
 of Wichita Disc at Southwest Corner
 of Intersection, 30.00'± S. of C of
 13th St. N. 35.00'± W. of C of
 135th St. W.
 Elev. = 1355.65 MSL

"□" Cut in Top of Curb 10' South
 of end of Existing Pavement, East
 Curb adjacent to Lot 12, Block D,
 Copper Gate North Addition.
 Elev. = 1362.13 MSL

BM Disc in top Curb Adjacent to
 Fire Hydrant at E. End of N. Curb
 Return of Kiwi & Decker, adjacent
 to Lot 16, Block D, Copper Gate
 North Addition.
 Elev. = 1361.04 MSL



Subdivision Bench Marks		
Street & Station	Location Description	Elevation
Ridgepoint 3+90.65, 27.25' Rt.	Adjacent to Fire Hydrant 18' from end of curb & gutter at intersection of Ridgepoint and 135th St. W.	
Nickelton Cir. 1+96.35, 14.25' Rt.	Adjacent to Fire Hydrant near common lot corner of Lots 6 & 7, Block A, Silverton Addition.	
Nickelton 3+26.37, 17.25' Lt.	Adjacent to Fire Hydrant near common lot corner of Lots 27 & 28, Block C, Silverton Addition.	
Jamesburg 10+62.09, 27.25' Lt.	Adjacent to Fire Hydrant 18' from end of curb & gutter at intersection of Jamesburg and 135th St. W.	
Nickelton Cir. 3+35.18, 14.25' Lt.	Adjacent to Fire Hydrant near common lot corner of Lots 16 & 17, Block C, Silverton Addition.	



P.V.I.
 Elev. = 1362.00
 36' V.C.

P.V.I.
 Elev. = 1362.00
 36' V.C.

NOTE: ROLL TYPE CURB & GUTTER TO BE CONSTRUCTED ON THE PAVEMENT SHOWN ON THIS SHEET. TOP OF CURB ELEVATIONS ARE GIVEN FOR FULL HEIGHT CURB.

		Silverton Addition - Phase I NICKELTON CIR STA. 4+03.35 TO STA. 6+87.65	
<small>Baughman Company, P.A. 315 Ellis St. Wichita, KS 67211 P 316-262-7271 F 316-262-0149 ENGINEERING SURVEYING PLANNING LANDSCAPE ARCHITECTURE</small>			
PROJECT NUMBER 472-84459	DESIGN JAK	DRAWN TMS	DATE 7/18/07
APPROVED NBW	SCALE Noted	SHEET 9 OF 44	
REVISIONS:		Silverton\Phase1\Str3	