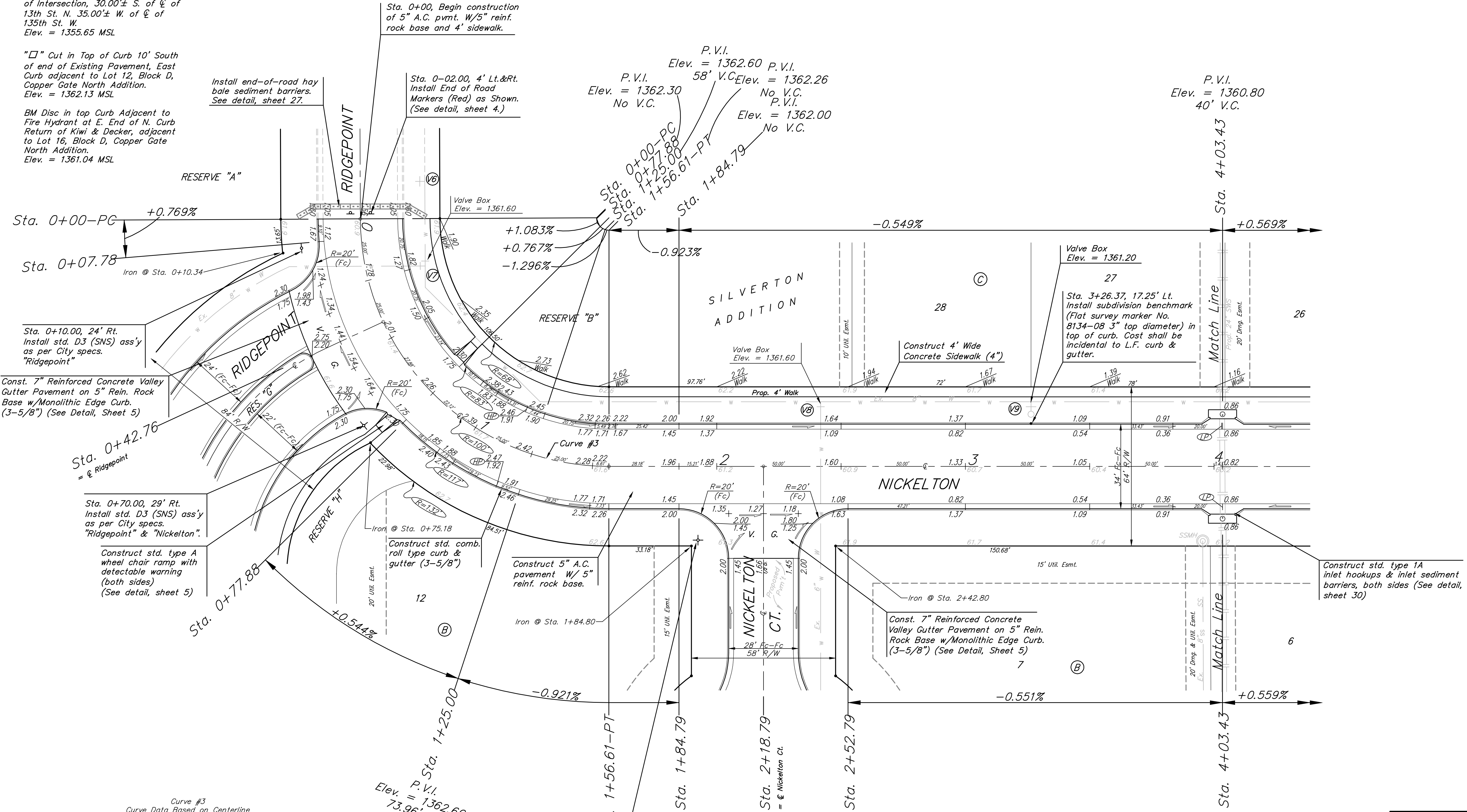
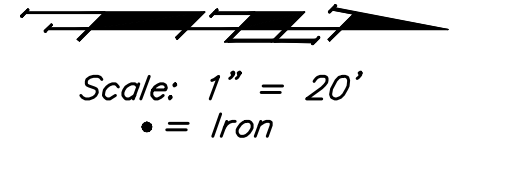


BENCHMARKS:
 135th St. W. & 13th St. N. - City of Wichita Disc at Southwest Corner of Intersection, 30.00± S. of C of 13th St. N. 35.00± W. of C of 135th St. W.
 Elev. = 1355.65 MSL

"□" Cut in Top of Curb 10' South of end of Existing Pavement, East Curb adjacent to Lot 12, Block D, Copper Gate North Addition.
 Elev. = 1362.13 MSL

BM Disc in top Curb Adjacent to Fire Hydrant at E. End of N. Curb Return of Kiwi & Decker, adjacent to Lot 16, Block D, Copper Gate North Addition.
 Elev. = 1361.04 MSL



Sta. 0+10.00, 24' Rt. Install std. D3 (SNS) ass'y as per City specs. "Ridgepoint"

Const. 7" Reinforced Concrete Valley Gutter Pavement on 5" Rein. Rock Base w/Monolithic Edge Curb. (3-5/8") (See Detail, Sheet 5)

Sta. 0+70.00, 29' Rt. Install std. D3 (SNS) ass'y as per City specs. "Ridgepoint" & "Nickelton".

Construct std. type A wheel chair ramp with detectable warning (both sides) (See detail, sheet 5)

Curve #3
 Curve Data Based on Centerline
 Rad. = 100' Delta = 89° 43' 59" Tangent = 99.54'
 Arc = 156.61' L.C. = 141.09' Def/Ft. = 17.18914 Min.

Station	Arc	FACE CHORD LENGTHS		Defl.	T. Defl.
		8' Lt.	8' Rt.		
0+00.00	-	-	-	0'00"00"	0'00"00"
0+07.78	7.78'	5.83'	9.72'	2'13"44"	2'13"44"
0+25.00	17.22'	12.90'	21.50'	4'55"60"	7'09"44"
0+42.76	17.76'	13.30'	22.17'	5'05"17"	12'15"00"
0+50.00	7.24'	5.43'	9.05'	2'04"27"	14'19"27"
0+75.00	25.00'	18.70'	31.17'	7'09"44"	21'29"11"
0+77.88	2.88'	2.16'	3.60'	0'49"30"	22'18"41"
1+00.00	22.12'	16.56'	27.59'	6'20"13"	28'38"55"
1+25.00	25.00'	18.70'	31.17'	7'09"44"	35'48"38"
1+50.00	25.00'	18.70'	31.17'	7'09"44"	42'58"22"
1+56.61	6.61'	4.96'	8.26'	1'53"37"	44'51"59"

Sta. 1+92.00, 29' Rt. Install std. D3 (SNS) ass'y as per City specs. "Nickelton" & Metro SNS "Nickelton Ct" (1728 - 1810).

NOTE: ROLL TYPE CURB & GUTTER TO BE CONSTRUCTED ON THE PAVEMENT SHOWN ON THIS SHEET. TOP OF CURB ELEVATIONS ARE GIVEN FOR FULL HEIGHT CURB.

Silverton Addition - Phase I
NICKELTON
 STA. 0+00 TO STA. 4+03.43

Baughman Company, P.A. 315 Ellis St. Wichita, KS 67211 P 316-262-7271 F 316-262-0149
 ENGINEERING | SURVEYING | PLANNING | LANDSCAPE ARCHITECTURE

PROJECT NUMBER: 472-84459
 DESIGN: JAK
 DRAWN: TMS
 APPROVED: NBW
 DATE: 7/18/07
 SCALE: Noted
 SHEET: 10 OF 44

Silverton\Phase I\Str4 06-08-E621