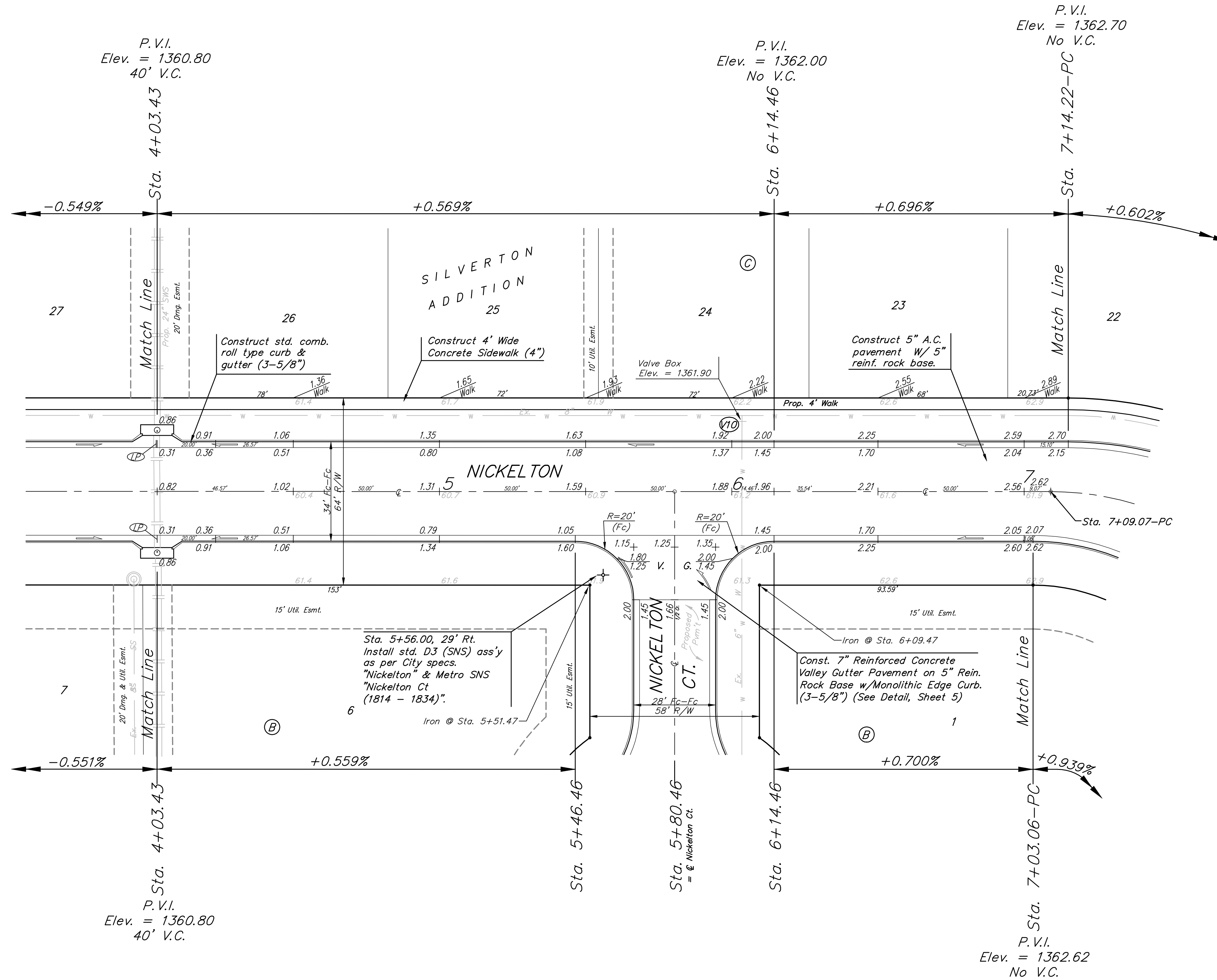


BENCHMARKS:
 135th St. W. & 13th St. N. - City
 of Wichita Disc at Southwest Corner
 of Intersection, 30.00'± S. of C of
 13th St. N. 35.00'± W. of C of
 135th St. W.
 Elev. = 1355.65 MSL

"□" Cut in Top of Curb 10' South
 of end of Existing Pavement, East
 Curb adjacent to Lot 12, Block D,
 Copper Gate North Addition.
 Elev. = 1362.13 MSL

BM Disc in top Curb Adjacent to
 Fire Hydrant at E. End of N. Curb
 Return of Kiwi & Decker, adjacent
 to Lot 16, Block D, Copper Gate
 North Addition.
 Elev. = 1361.04 MSL

Scale: 1" = 20'
 • = Iron



P.V.I.
 Elev. = 1360.80
 40' V.C.

P.V.I.
 Elev. = 1362.00
 No V.C.

P.V.I.
 Elev. = 1362.70
 No V.C.

P.V.I.
 Elev. = 1360.80
 40' V.C.

P.V.I.
 Elev. = 1362.62
 No V.C.

NOTE: ROLL TYPE CURB & GUTTER TO BE CONSTRUCTED ON THE PAVEMENT SHOWN ON THIS SHEET. TOP OF CURB ELEVATIONS ARE GIVEN FOR FULL HEIGHT CURB.

		Silverton Addition - Phase I NICKELTON STA. 4+03.43 TO STA. 7+03.06	
<small>Baughman Company, P.A. 315 Ellis St. Wichita, KS 67211 P 316-262-7271 F 316-262-0149 ENGINEERING SURVEYING PLANNING LANDSCAPE ARCHITECTURE</small>			
PROJECT NUMBER 472-84459	DESIGN JAK	DRAWN TMS	DATE 7/18/07
REVISIONS:	APPROVED NBW	SCALE Noted	SHEET 11 OF 44
<small>Silverton\Phase1\Str5</small>		<small>06-08-E621</small>	