

BENCHMARKS:
 135th St. W. & 13th St. N. - City of Wichita Disc at Southwest Corner of Intersection, 30.00'± S. of & of 13th St. N. 35.00'± W. of & of 135th St. W.
 Elev. = 1355.65 MSL

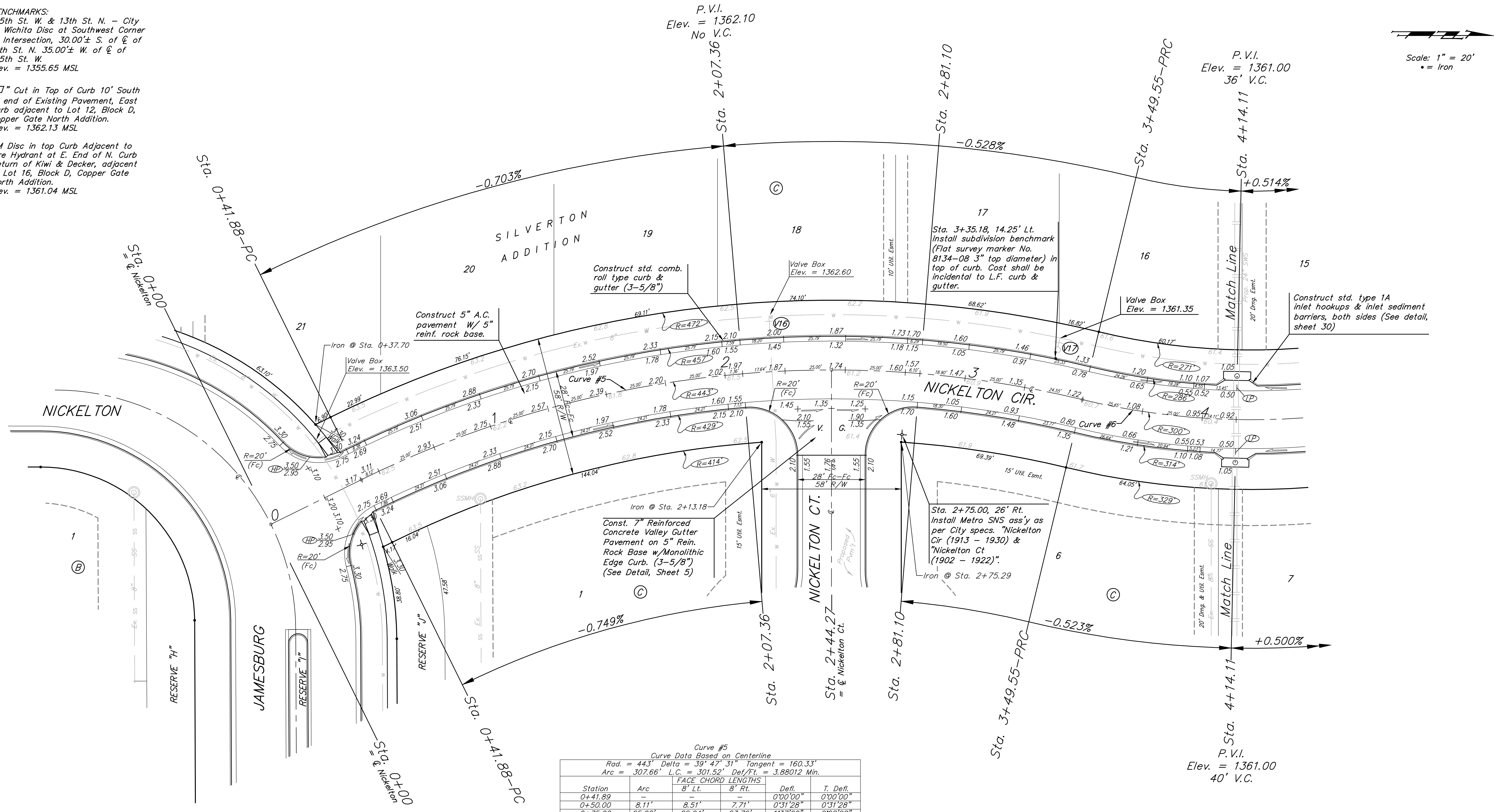
"□" Cut in Top of Curb 10' South of end of Existing Pavement, East Curb adjacent to Lot 12, Block D, Copper Gate North Addition.
 Elev. = 1362.13 MSL

BM Disc in top Curb Adjacent to Fire Hydrant at E. End of N. Curb Return of Kiwi & Decker, adjacent to Lot 16, Block D, Copper Gate North Addition.
 Elev. = 1361.04 MSL

P.V.I.
 Elev. = 1362.10
 No V.C.

P.V.I.
 Elev. = 1361.00
 36' V.C.

Scale: 1" = 20'
 • = Iron



Curve #5
 Curve Data Based on Centerline
 Rad. = 443' Delta = 39° 47' 31" Tangent = 160.33'
 Arc = 307.66' L.C. = 301.52' Def/ft. = 3.88012 Min.

Station	Arc	FACE CHORD LENGTHS		Defl.	T. Defl.
		8' Lt.	8' Rt.		
0+41.89	-	-	-	0°00'00"	0°00'00"
0+50.00	8.11'	8.51'	7.71'	0°31'28"	0°31'28"
0+75.00	25.00'	26.24'	23.76'	1°37'00"	2°08'28"
1+00.00	25.00'	26.24'	23.76'	1°37'00"	3°45'28"
1+25.00	25.00'	26.24'	23.76'	1°37'00"	5°22'28"
1+50.00	25.00'	26.24'	23.76'	1°37'00"	6°59'29"
1+75.00	25.00'	26.24'	23.76'	1°37'00"	8°36'29"
2+00.00	25.00'	26.24'	23.76'	1°37'00"	10°13'29"
2+07.36	7.36'	7.73'	6.99'	0°28'33"	10°42'02"
2+25.00	17.64'	18.52'	16.76'	1°08'27"	11°50'29"
2+44.27	19.27'	20.23'	18.31'	1°14'46"	13°05'15"
2+50.00	5.73'	6.01'	5.45'	0°22'14"	13°27'29"
2+75.00	25.00'	26.24'	23.76'	1°37'00"	15°04'30"
2+81.10	6.10'	6.40'	5.80'	0°23'40"	15°28'10"
3+00.00	18.90'	19.84'	17.96'	1°13'20"	16°41'30"
3+25.00	25.00'	26.24'	23.76'	1°37'00"	18°18'30"
3+49.55	24.55'	25.77'	23.33'	1°35'15"	19°53'45"

NOTE: ROLL TYPE CURB & GUTTER TO BE CONSTRUCTED ON THE PAVEMENT SHOWN ON THIS SHEET. TOP OF CURB ELEVATIONS ARE GIVEN FOR FULL HEIGHT CURB.

Baughman Silvererton Addition - Phase I
NICKELTON CIR
 STA. 0+00 TO STA. 4+14.11

Baughman Company, P.A. 315 Ellis St. Wichita, KS 67211 P 316-262-7271 F 316-262-0149
 ENGINEERING | SURVEYING | PLANNING | LANDSCAPE ARCHITECTURE

PROJECT NUMBER: 472-84459
 DESIGN: JAK
 DRAWN: TMS
 APPROVED: NBW
 DATE: 7/18/07
 SCALE: Noted
 SHEET: 15 OF 44

Revisions:

Silvererton\Phase1\Su9 06-08-E621