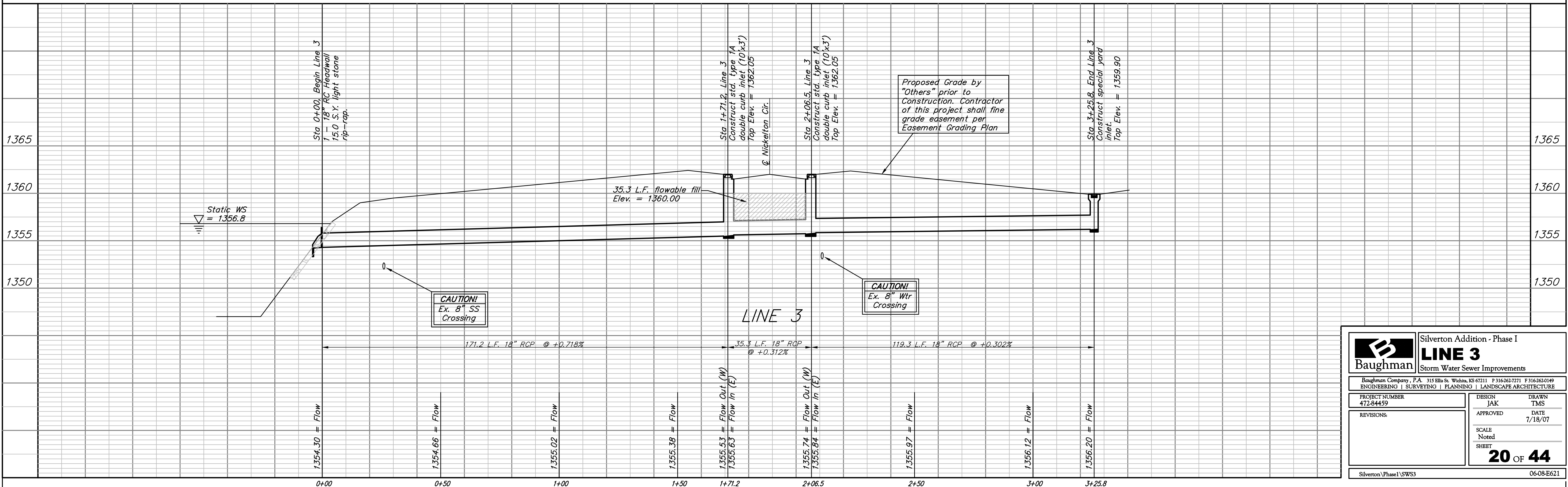
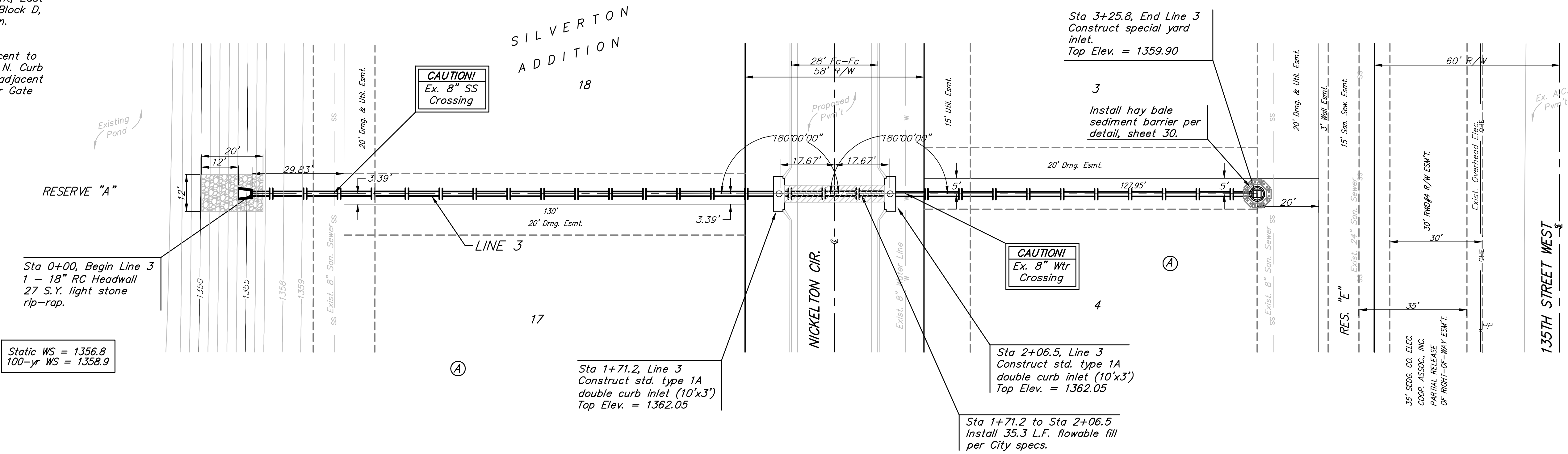


BENCHMARKS:
 135th St. W. & 13th St. N. - City of Wichita Disc at Southwest Corner of Intersection, 30.00± S. of \mathcal{C} of 13th St. N. 35.00± W. of \mathcal{C} of 135th St. W.
 Elev. = 1355.65 MSL

"□" Cut in Top of Curb 10' South of end of Existing Pavement, East Curb adjacent to Lot 12, Block D, Copper Gate North Addition.
 Elev. = 1362.13 MSL

BM Disc in top Curb Adjacent to Fire Hydrant at E. End of N. Curb Return of Kiwi & Decker, adjacent to Lot 16, Block D, Copper Gate North Addition.
 Elev. = 1361.04 MSL

Scale: 1" = 20' Horizontal
 1" = 5' Vertical
 • = Iron



		Silverton Addition - Phase I LINE 3 Storm Water Sewer Improvements	
		<small>Baughman Company, P.A. 315 Ellis St. Wichita, KS 67211 P 316-262-7271 F 316-262-0149 ENGINEERING SURVEYING PLANNING LANDSCAPE ARCHITECTURE</small>	
PROJECT NUMBER 472-84459	DESIGN JAK	DRAWN TMS	DATE 7/18/07
REVISIONS:	APPROVED	SCALE Noted	SHEET 20 OF 44
<small>Silverton\Phase1\SW3</small>		<small>06-08-E621</small>	