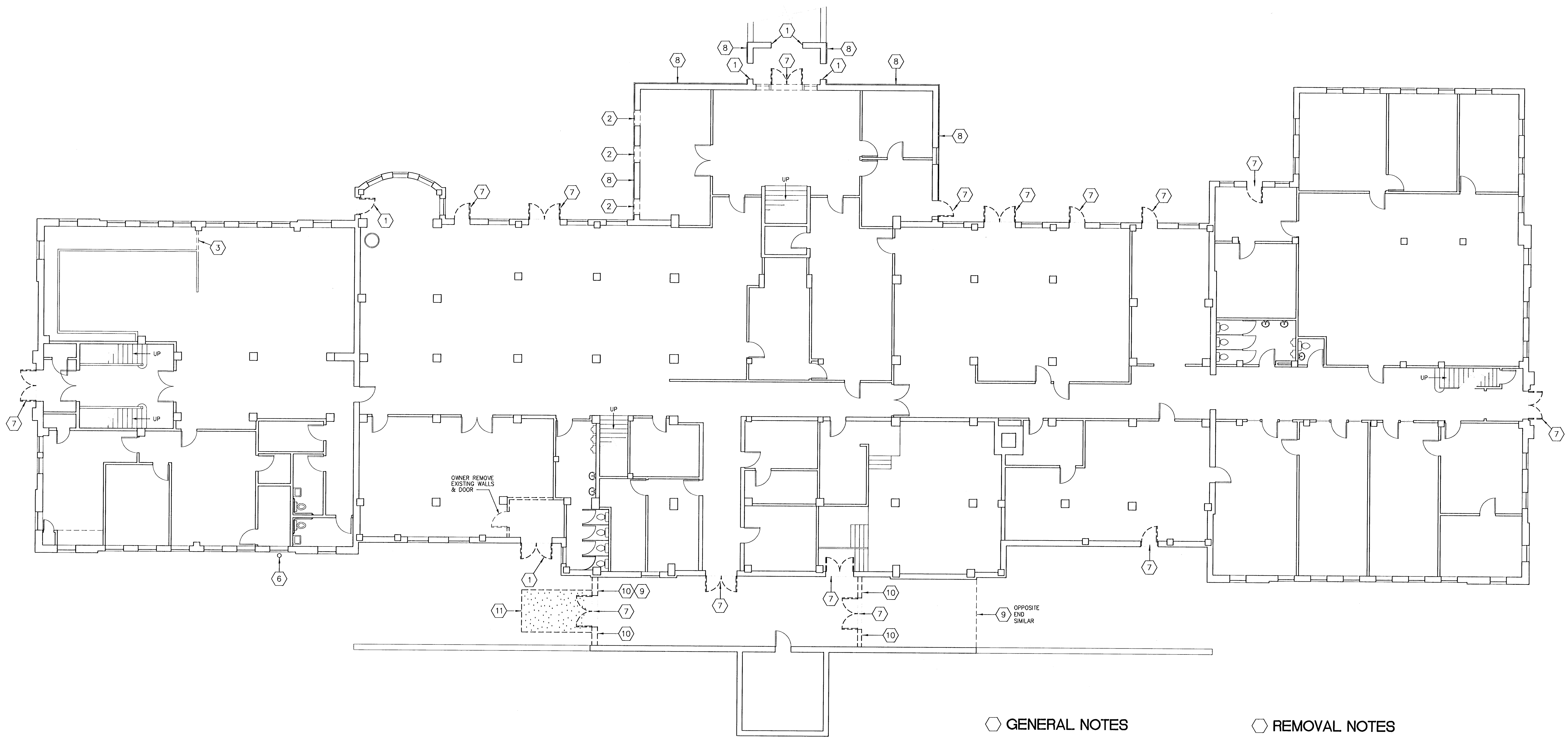


CREATED: 04/13/99  
PLOTTED:

DWG: M:\2632.10\A1-0.DWG  
DWGSCALE: 1/8" = 1'-0"

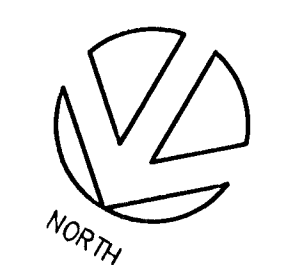


**GENERAL NOTES**

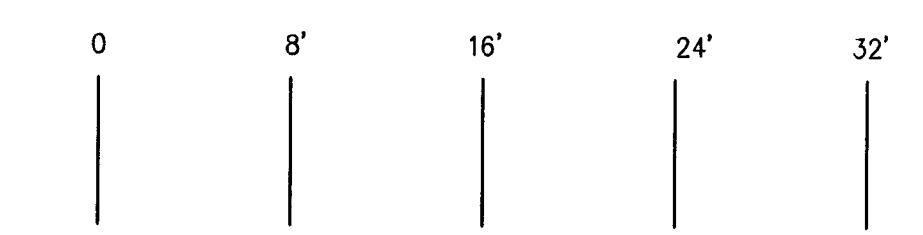
- A. REFER WINDOW REFURBISHING SPEC. FOR REMOVAL OF PAINT, RUST, & WINDOW PUTTY FROM EXISTING STEEL WINDOWS, TYPICAL ALL FLOORS.
- B. OWNER RESPONSIBLE FOR ENCAPSULATING & REMOVING ANY EXPOSED PIPING WRAPPED WITH ASBESTOS-CONTAINING MATERIALS, TYPICAL ALL FLOORS.
- C. OWNER RESPONSIBLE FOR MOVING EXHIBITRY & STORED ITEMS AWAY FROM ALL AREAS REQUIRING WORK, TYPICAL ALL FLOORS.

**REMOVAL NOTES**

- 1. REMOVE EXISTING WOOD DOOR FRAME.
- 2. REMOVE THRU-WALL LOUVERS (FOR INFILL).
- 3. REMOVE PORTION OF EXISTING GYP. BD. PARTITION AS REQUIRED FOR ACCESSING NEW WORK.
- 4. REMOVE EXISTING CLOSET AND DOOR.
- 5. REMOVE/REPLACE EXISTING SUSPENDED ACOUSTICAL CEILING SYSTEM AS REQUIRED (PER SHADED AREA) FOR NEW WORK.
- 6. REMOVE/RELOCATE EXISTING METAL FLUE.
- 7. REMOVE EXISTING DOOR AND FRAME (FOR REPLACEMENT).
- 8. REMOVE COATINGS FROM FACE OF CONCRETE, TYPICAL.
- 9. REMOVE/SALVAGE EXISTING BRICK TERRACE WALL DOWN TO EXISTING STEEL LINTEL ABOVE OPENING.
- 10. REMOVE EXISTING MASONRY WALL & CONC. CURB IT RESTS ON.
- 11. REMOVE CONC. DRIVE AS REQ'D. FOR NEW CONC. RAMP.



**GROUND FLOOR REMOVAL PLAN**  
SCALE: 1" = 8'-0"



	PROJECT NO. 2632.10	YEAR 2004	SHEET NO. A1-0	TOTAL SHEETS 15
SCHAEFER JOHNSON COX FREY & ASSOCIATES PA ARCHITECTURE ENGINEERING PLANNING & INTERIOR DESIGN 287 N. BROADWAY WICHITA, KANSAS 67202 TEL: 620-694-6535 FAX: 620-694-0171				
<h1 style="margin: 0;">KANSAS AVIATION MUSEUM</h1> <p style="margin: 0;">3350 S. GEORGE WASHINGTON BOULEVARD WICHITA, KANSAS</p>				
REVISION DATE				
PROJECT NO. 2632.10				
DATE APRIL 2004				
<h2 style="margin: 0;">A1-0</h2>				