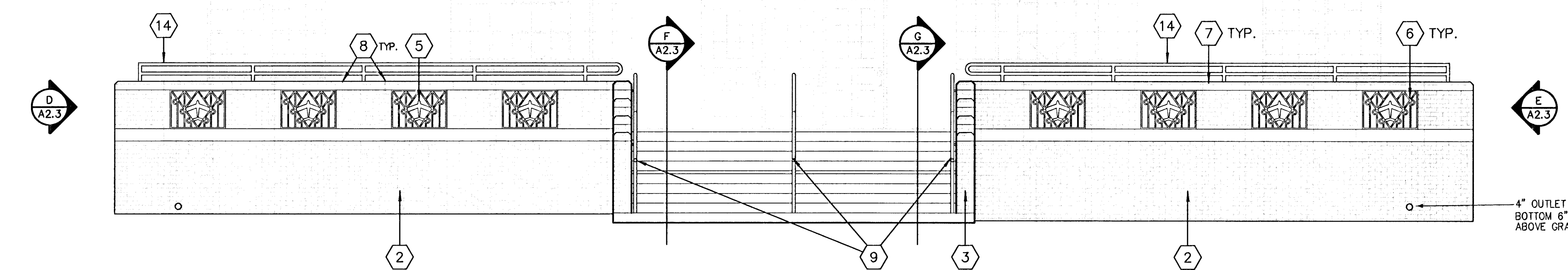
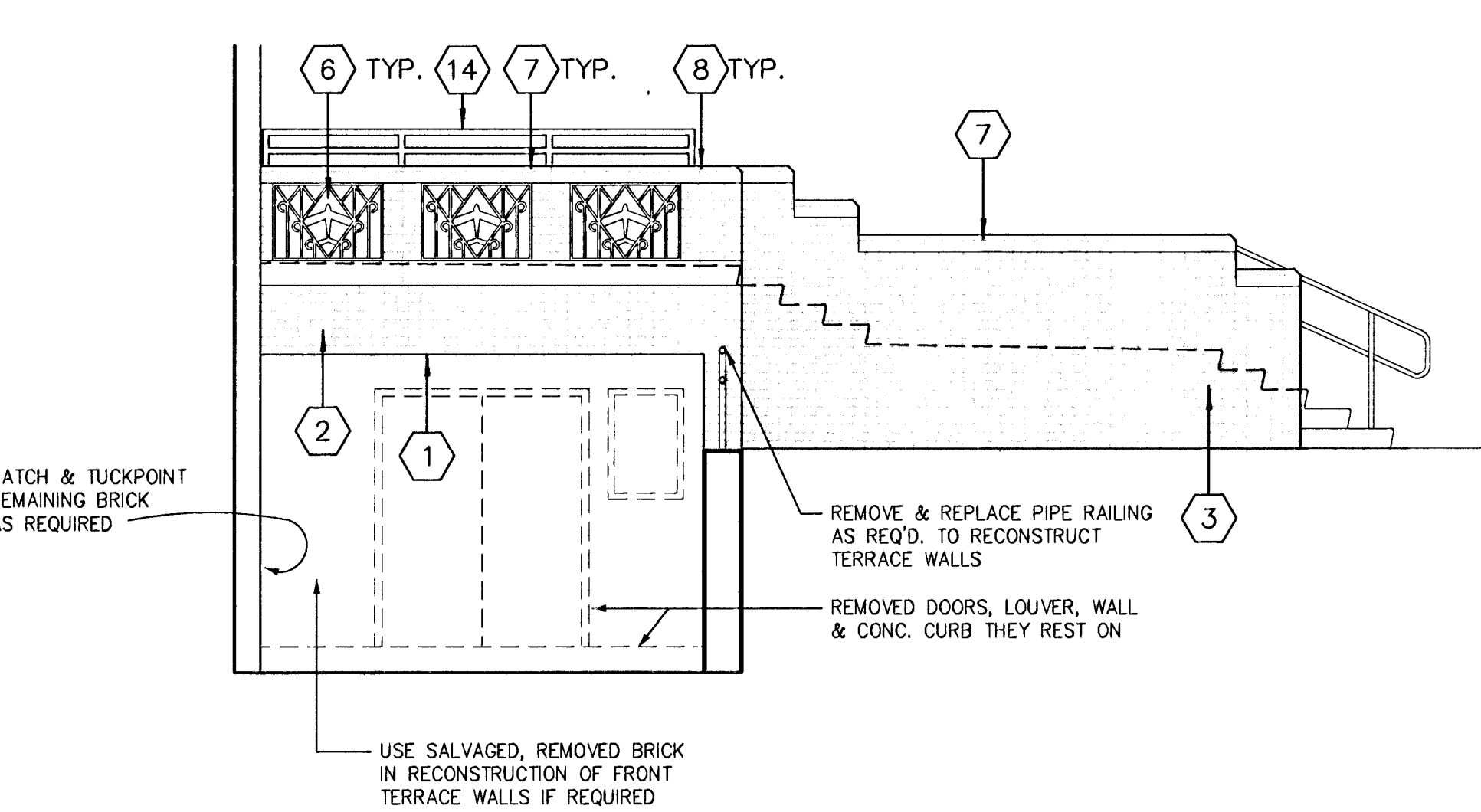


**A FRONT (NORTH) TERRACE PLAN**  
SCALE: 1/4" = 1'-0"

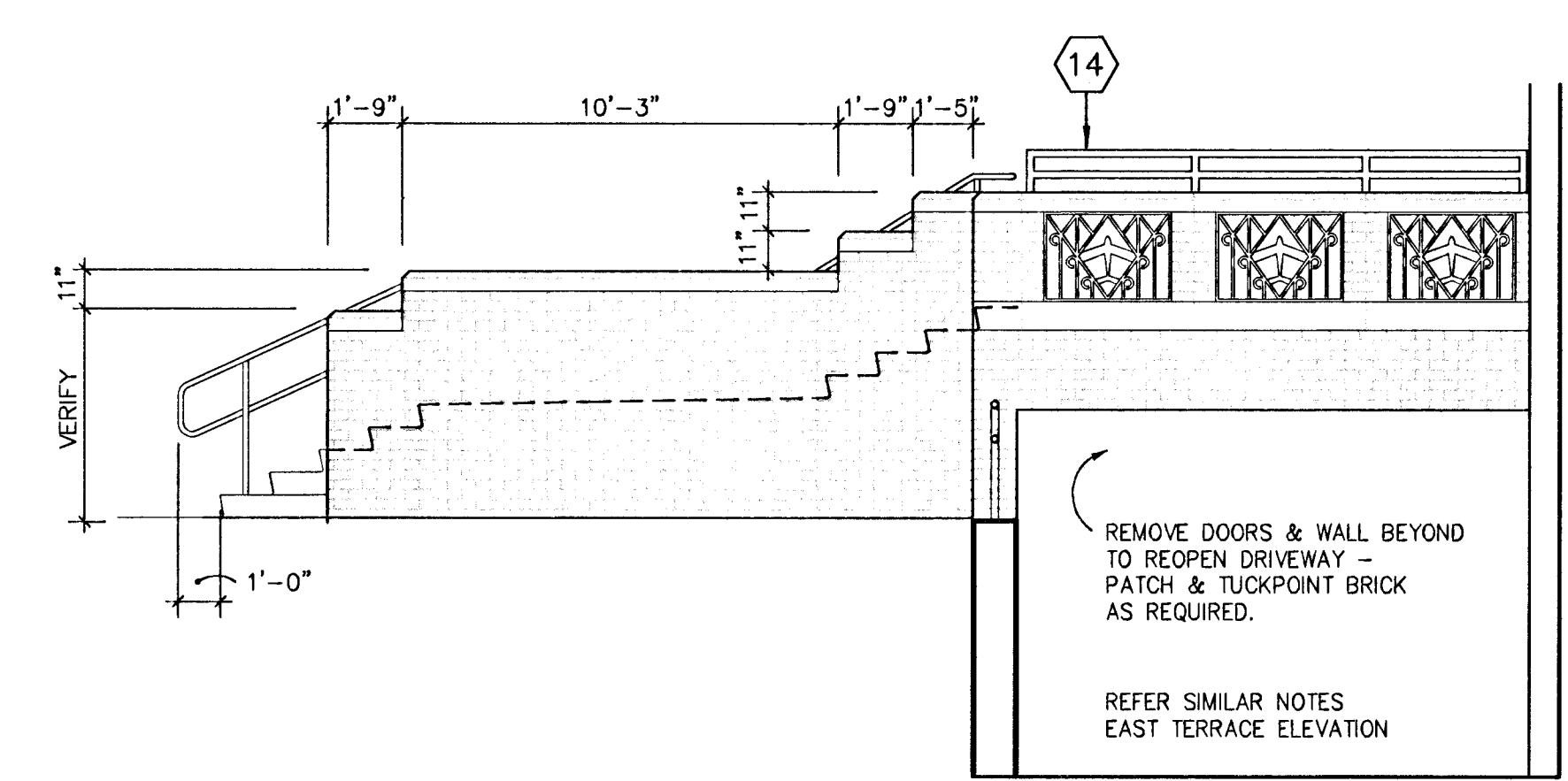


**B FRONT (NORTH) TERRACE ELEVATION**  
SCALE: 1/4" = 1'-0"

NOTE:  
THE TERRACE WALLS ARE TO BE TAKEN DOWN CAREFULLY TO AVOID DAMAGE TO MATERIALS THAT ARE NEEDED TO RECONSTRUCT WALLS. SALVAGE ALL EXISTING PRECAST & BRICK FOR RECONSTRUCTION IN SAME CONFIGURATION.



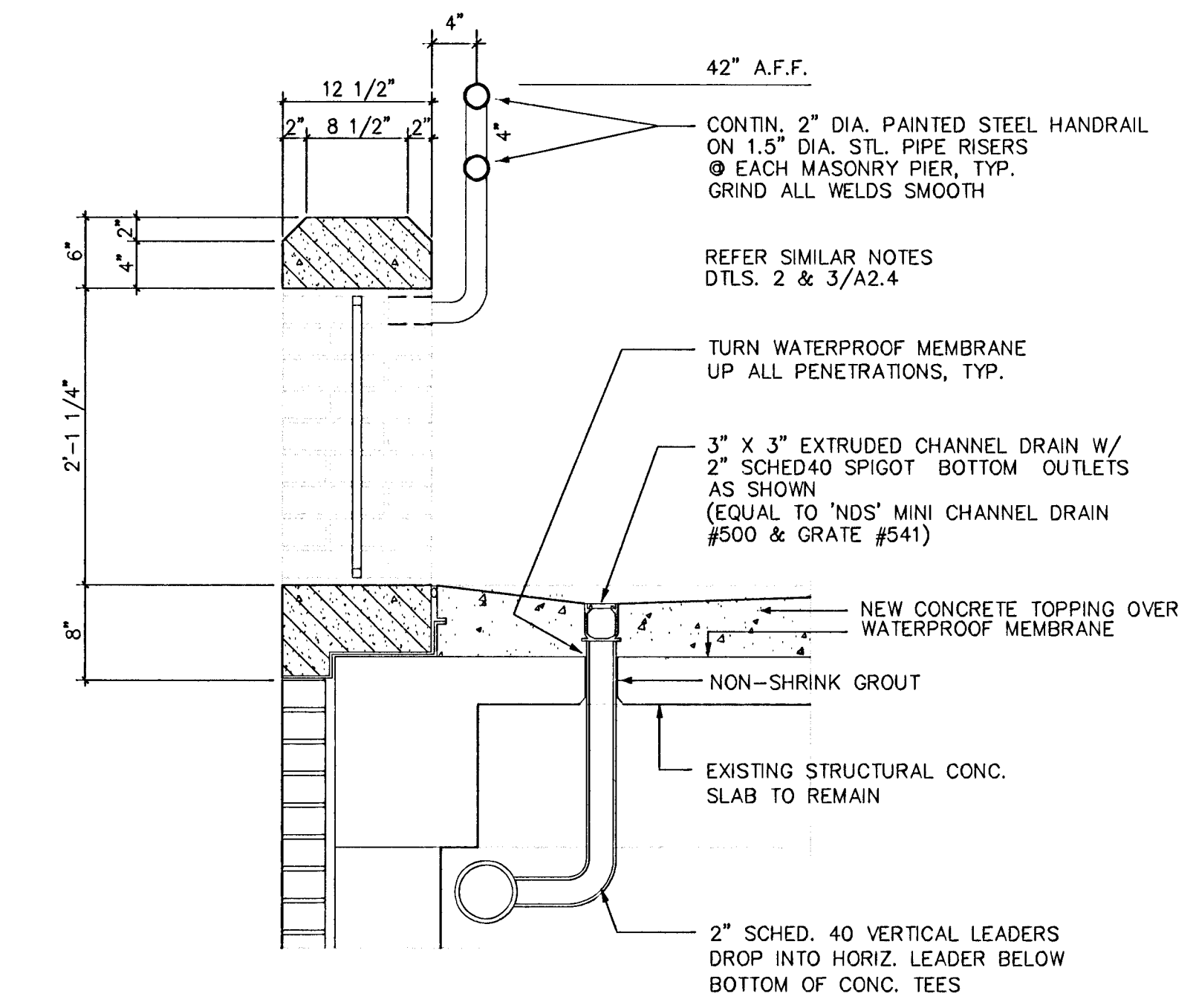
**D EAST ELEVATION - FRONT TERRACE**  
SCALE: 1/4" = 1'-0"



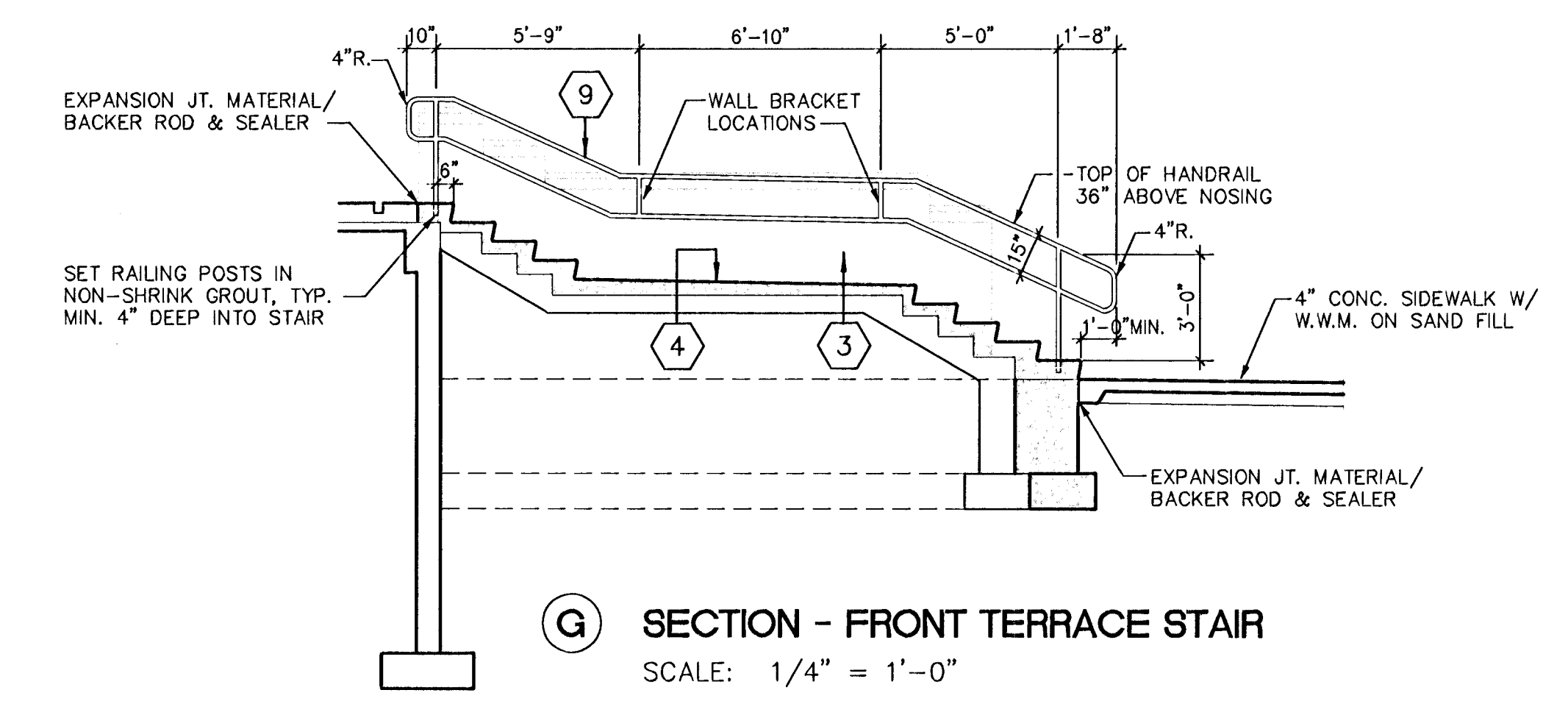
**E WEST ELEVATION - FRONT TERRACE**  
SCALE: 1/4" = 1'-0"

**KEYED NOTES**

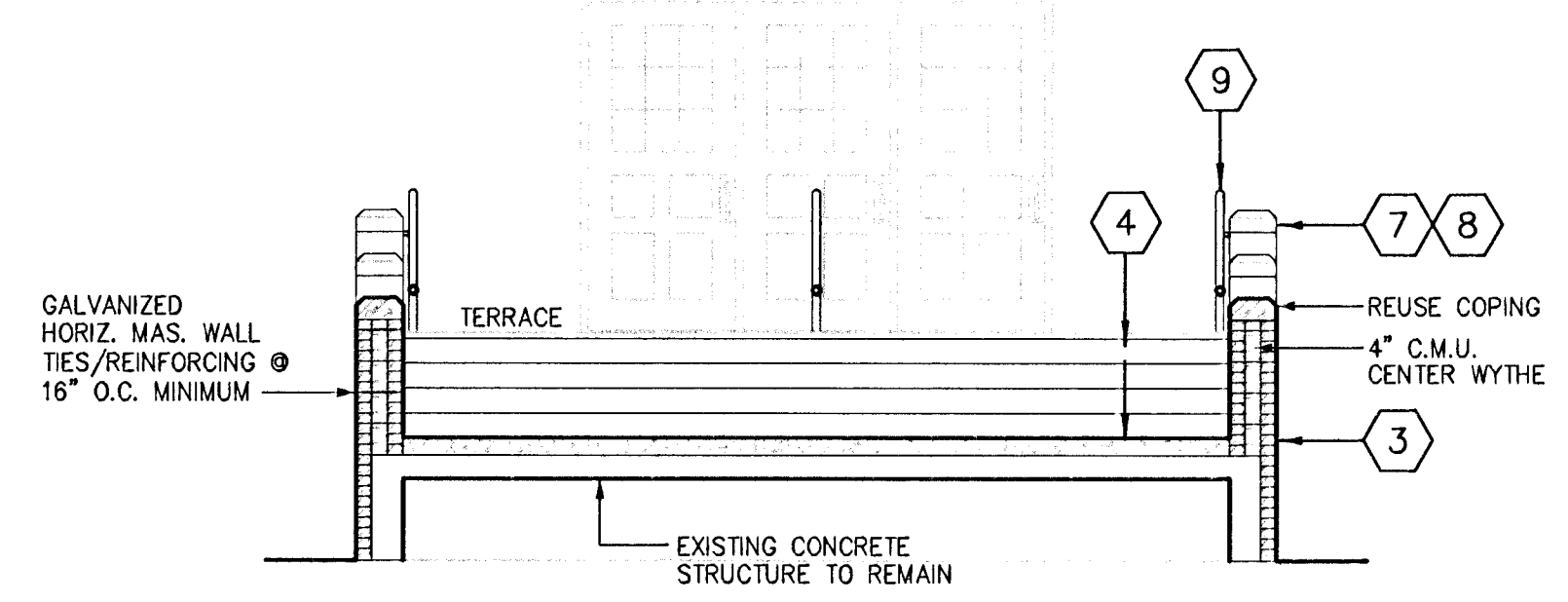
1. REPLACE STEEL LINTEL AND PAINT
2. RECONSTRUCT MASONRY WALLS W/ SALVAGED BRICK.
3. RECONSTRUCT MASONRY STAIR WALL W/ SALVAGED BRICK. (4" BRICK, 4" C.M.U., 4" BRICK)
4. NEW COLORED CONCRETE TOPPING @ STAIRS & LANDING.
5. NEW CONCRETE TOPPING @ TERRACE. SLOPE TO CHANNEL DRAINS.
6. REINSTALL SALVAGED & REPAINTED CAST ORNAMENTAL GRILLES.
7. NEW PRECAST ARCH. CONC. COPING. NEW CONCRETE CAPS TO MATCH PROFILE OF EXISTING.
8. SEAL COPING JOINTS, REFER SPEC.
9. NEW 1 1/2" STEEL HANDRAIL, PAINTED. ALL JOINTS WELDED & GROUND SMOOTH, TYPICAL.
10. NEW 3" CHANNEL DRAIN.
11. NEW 4" THRU-WALL SCOPPER.
12. SLOPE CONC. FROM TRENCH DRAIN BACK UP TO TOP OF PRE-CAST CONC. BELT COURSE.
13. SEALANT & BACKER ROD @ RAKED OUT JOINT @ PERIMETER OF CONCRETE TERRACE, TYPICAL.
14. PAINTED STEEL PIPE RAIL @ PERIMETER OF CONCRETE TERRACE, TYPICAL.



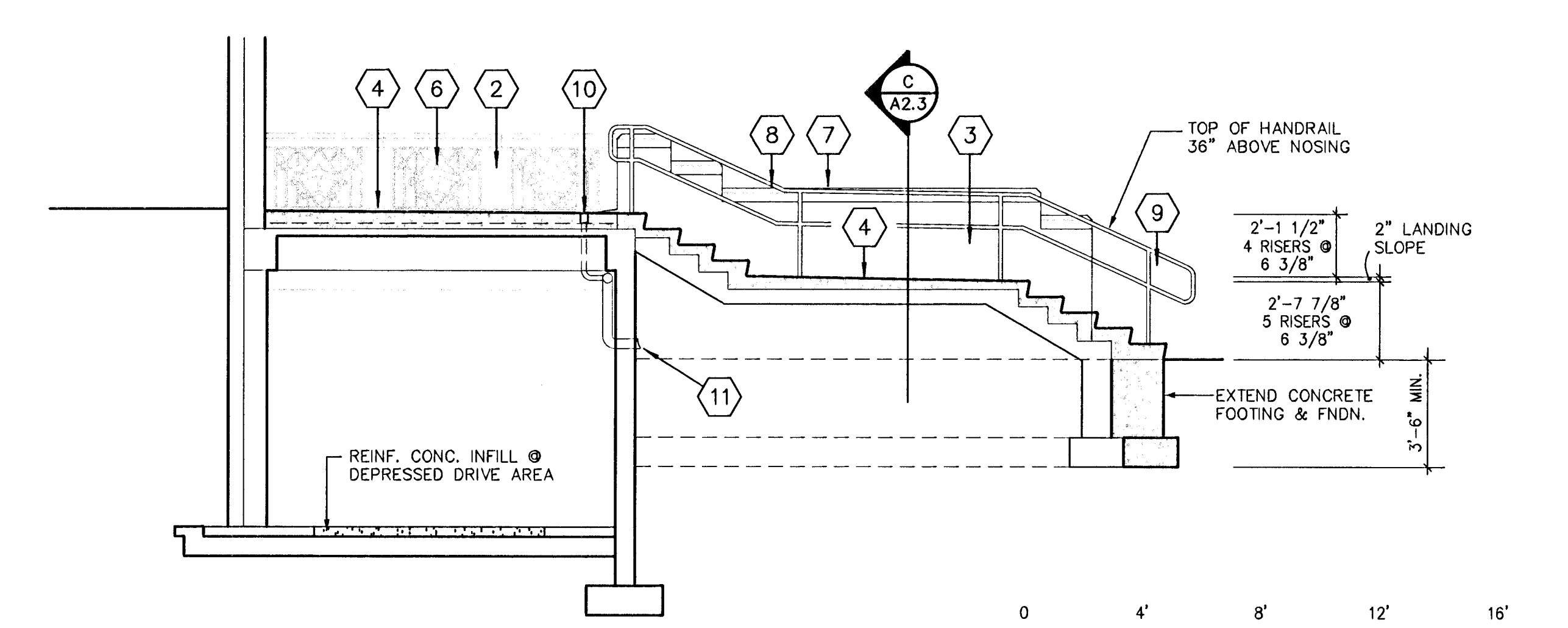
**1 SECTION C.I. GRILLEWORK**  
SCALE: 1" = 1'-0"



**G SECTION - FRONT TERRACE STAIR**  
SCALE: 1/4" = 1'-0"



**C SECTION - FRONT TERRACE**  
SCALE: 1/4" = 1'-0"



**F SECTION - FRONT TERRACE**  
SCALE: 1/4" = 1'-0"

**FRONT TERRACE DRAWINGS**

PROJECT NO. 2632.10  
 SHEET NO. A2-3  
 DATE APRIL 2004  
 ARCHITECTURE ENGINEERING PLANNING & INTERIOR DESIGN  
 WICHITA, KANSAS 67202-2911  
 2877 N. BRADWAY  
 WICHITA, KANSAS 67202-2911  
 FAX (316) 684-8666  
 (316) 684-0171

SCHAEFER JOHNSON COX FREY & ASSOCIATES PA  
 KANSAS AVIATION MUSEUM  
 WICHITA, KANSAS  
 3350 S. GEORGE WASHINGTON BOULEVARD

REVISION DATE  
 PROJECT NO. 2632.10  
 DATE APRIL 2004  
 A2-3

M:\2632.10\A2-3  
 1/4" = 1'-0"