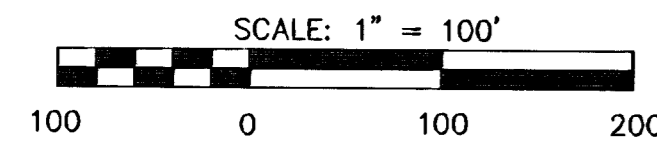


FINAL PLAT

REGENCY PARK ADDITION

AN ADDITION TO WICHITA, SEDGWICK COUNTY, KANSAS

NW COR., NE 1/4
SEC 4, T27S, R2E



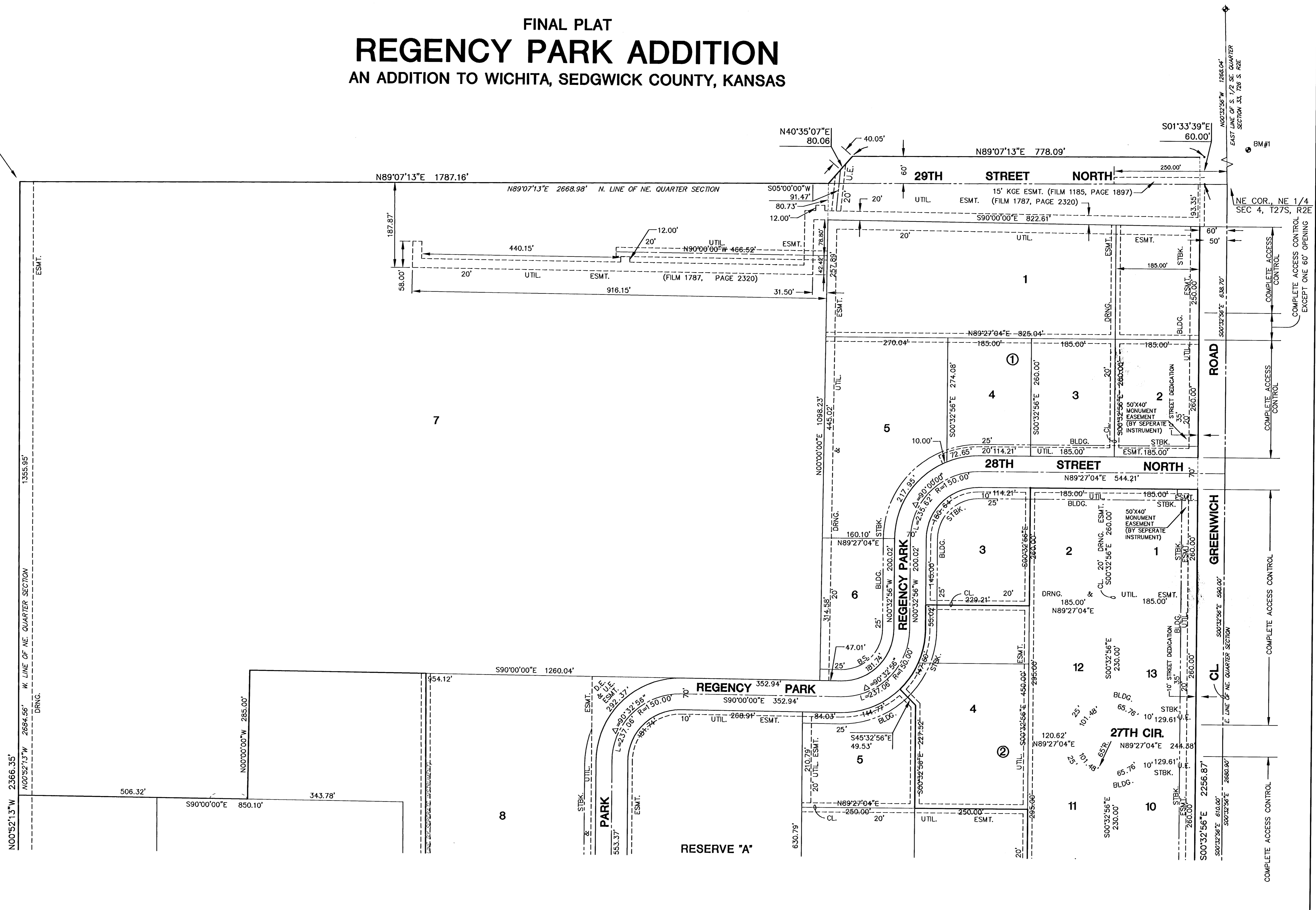
LEGEND

- = I.P.
- B.S. = BUILDING SETBACK
- U.E. = UTILITY EASEMENT
- = 10' STREET DEDICATION

| MINIMUM PAD ELEVATIONS (LOWEST OPENINGS) | | | |
|---|-------|---------------------------|---------------------|
| LOT | BLOCK | ELEVATION (CITY DATUM) | ELEVATION (USGS) |
| 9 | 1 | 190.3 | 1377.7 |
| 10 | 1 | 188.8 | 1376.2 |
| 11 | 1 | 187.3 | 1374.7 |
| 5 | 2 | 192.1 | 1379.5 |
| 6 | 2 | 192.1 | 1379.5 |

BENCHMARKS

- BM#1 STEP SPIKE IN WEST SIDE PP,
1st. POLE NORTH OF 29th. ST.
ON EAST SIDE GREENWICH RD.
ELEV. = 201.51
- BM#2 STEP SPIKE IN WEST SIDE PP,
6th. POLE NORTH OF K-96 ON
EAST SIDE GREENWICH RD.
ELEV. = 192.04
- BM#3 STEP SPIKE IN WEST SIDE PP,
1st. POLE NORTH OF K-96 ON
EAST SIDE GREENWICH RD.
ELEV. = 184.45



COMPLETE ACCESS CONTROL
EXCEPT ONE 60' OPENING

COMPLETE ACCESS CONTROL

COMPLETE ACCESS CONTROL

N00°52'13"W 2366.35' DRNG. & U.E. ESMT. N LINE OF NE QUARTER SECTION

N00°32'13"W 2684.56' DRNG. & U.E. ESMT. W LINE OF NE QUARTER SECTION

N00°00'00"W 285.00' DRNG. & U.E. ESMT. N LINE OF NE QUARTER SECTION

N00°32'56"W 1266.04' DRNG. & U.E. ESMT. EAST LINE OF S. 1/2 SE. QUARTER SECTION 33, T26 S, R2E

S00°32'56"E 2680.90' DRNG. & U.E. ESMT. E LINE OF NE QUARTER SECTION