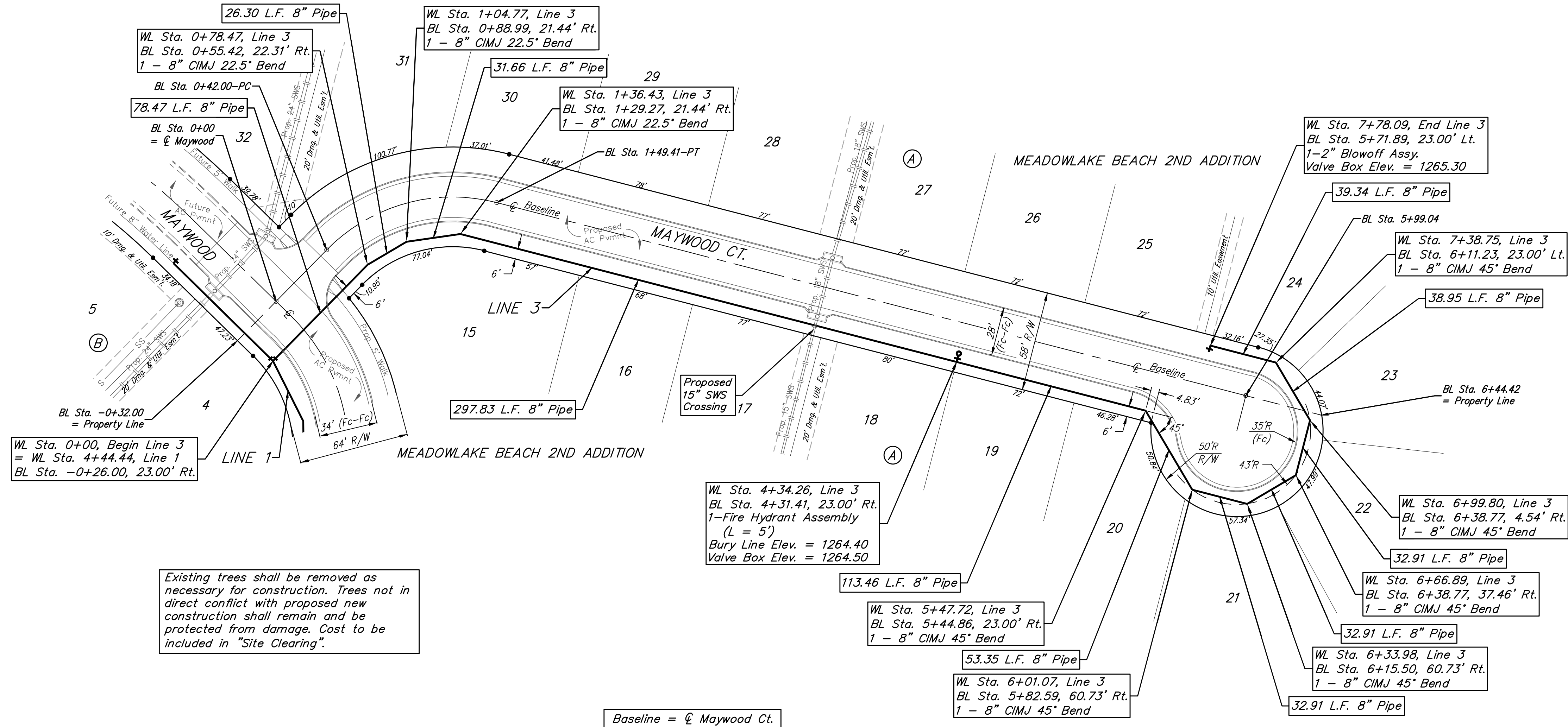


BENCHMARK:

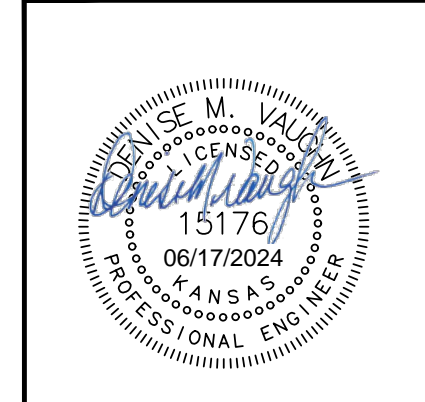
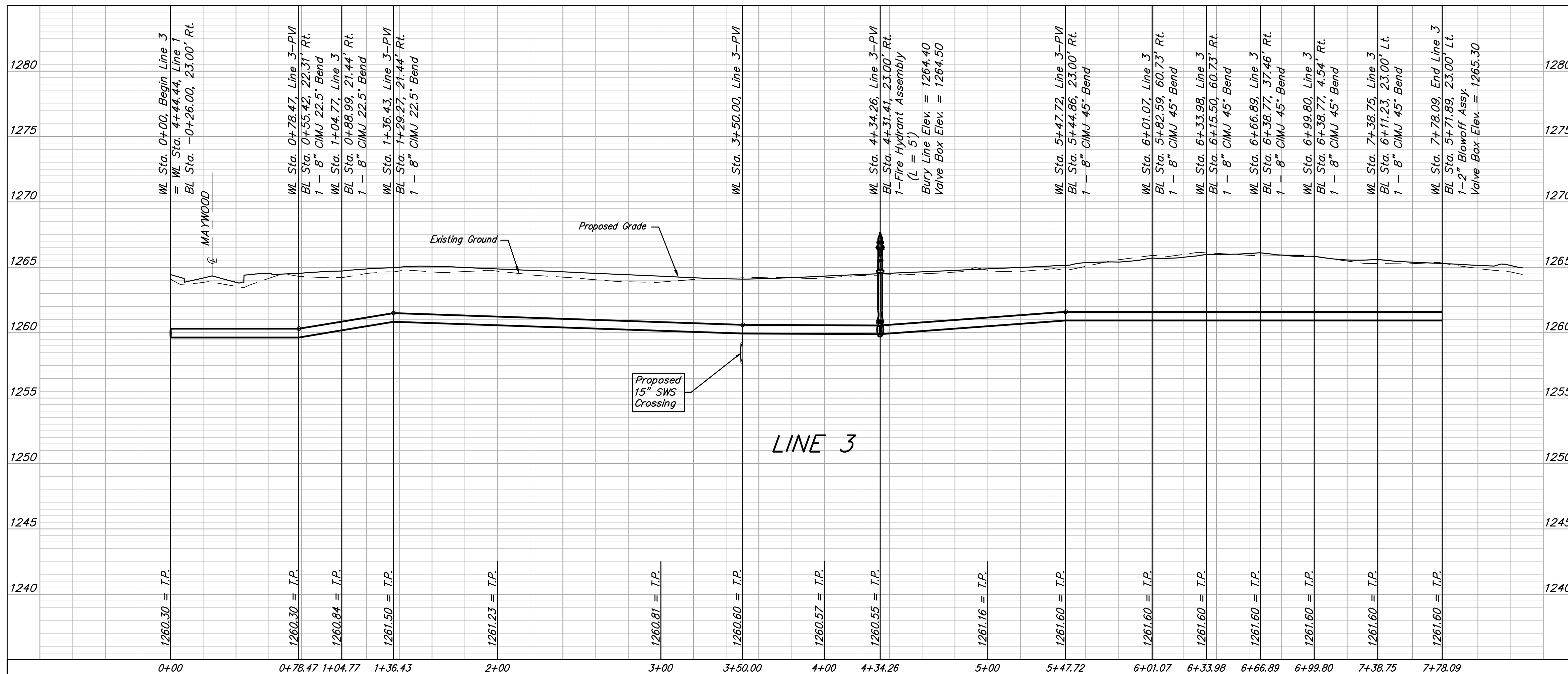
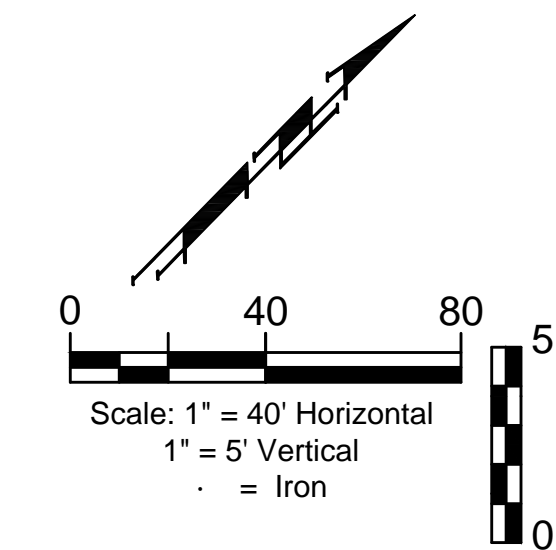
BM #1 - City of Wichita Benchmark Disc, SE Corner of Clifton and 55th Street South, Southwest corner of RCBC, on top of hubguard at the West end.
Elev. = 1263.61 NAVD88

BM #2 - " " Cut on top of curb, north side of Shoffner, adjacent to SE corner of Lot 14 Block B, Meadowlake Beach Addition, Sedgwick County, Kansas.
Elev. = 1264.80 NAVD88



Existing trees shall be removed as necessary for construction. Trees not in direct conflict with proposed new construction shall remain and be protected from damage. Cost to be included in "Site Clearing".

Baseline = ϕ Maywood Ct.



BAUGHMAN COMPANY
 315 Ellis St.
 Wichita, KS 67211
 316-262-7271
 BaughmanCo.com

MEADOWLAKE BEACH 2ND ADDITION - PHASE I

LINE 3

WATER DISTRIBUTION SYSTEM

PROJECT NUMBER:

DESIGN: DMV DRAWN: JAK
 DATE: June 12, 2024

SHEET 6 OF 15