

PAVING STREETS AND INCIDENTAL DRAINAGE IN
PHASE 2

REED'S COVE FOURTH ADDITION

AN ADDITION TO THE CITY OF WICHITA
SEDGWICK COUNTY, KANSAS

PROJECT NO. 472-84384

JIM ARMOUR, P.E. - CITY ENGINEER

OCA - 765986

GENERAL NOTES

- UNLESS SHOWN OR STATED OTHERWISE ON THESE DRAWINGS, MATERIALS AND CONSTRUCTION SHALL BE IN ACCORDANCE WITH CITY OF WICHITA CONCRETE PAVEMENT AND ASPHALTIC CONCRETE PAVEMENT SPECIFICATIONS.
- CONTRACTOR WILL BE REQUIRED TO PROVIDE A MINIMUM ADVANCE NOTICE OF SEVENTY-TWO (72) HOURS TO UTILITY COMPANIES PRIOR TO STARTING ANY EXCAVATION AS FOLLOWS:
KANSAS ONE-CALL 1-800-344-7233
OR 687-2470 (LOCAL WICHITA)
- THE CONTRACTOR MUST NOTIFY THE FOLLOWING IN CASE OF AN EMERGENCY:
SBC (TELEPHONE) 800-870-8390
COX COMMUNICATIONS (CABLE) 262-0661
WESTAR (ELECTRIC) 383-8600
KANSAS GAS SERVICE (GAS) 832-3101
CITY OF WICHITA WATER & SEWER MAINT. 282-6000
AQUILA (GAS) 946-0098
- THE CONTRACTOR SHALL BE RESPONSIBLE FOR PRESERVING PROPERTY IRONS. THE CONTRACTOR WILL BE REQUIRED TO RE-ESTABLISH ANY PROPERTY IRONS WHICH ARE DAMAGED OR DESTROYED BY HIS CONSTRUCTION OPERATIONS. SUCH IRONS SHALL BE RE-ESTABLISHED BY A LICENSED LAND SURVEYOR IN ACCORDANCE WITH STATE LAWS.
- EXISTING UTILITIES AND THEIR LOCATIONS, AS SHOWN ON THE PLANS REPRESENT THE BEST INFORMATION OBTAINABLE FOR DESIGN. LOCATION INFORMATION HAS BEEN OBTAINED FROM THE VARIOUS UTILITY COMPANIES AND IS EITHER FROM COMPANY RECORD DRAWINGS OR COMPANY PROVIDED FIELD LOCATIONS. THE PLAN LOCATIONS SHOWN ARE NOT GUARANTEED. ADDITIONAL EXISTING UTILITIES MAY ALSO BE ENCOUNTERED.
- RUBBLE FROM THE REMOVAL OF MISCELLANEOUS STRUCTURES AND EXCESS EXCAVATION WHICH IS TO BE WASTED SHALL BE DISPOSED OF ON SITES TO BE PROVIDED BY THE CONTRACTOR. THESE SITES SHALL BE APPROVED BY THE ENGINEER AS TO SUITABILITY, APPEARANCE AND SITE LOCATION. LOCATIONS THAT, IN THE OPINION OF THE ENGINEER, WILL LEAVE AN UNSIGHTLY APPEARANCE WILL NOT BE APPROVED. ALL DISPOSAL SITES MUST BE APPROVED BY THE KANSAS DEPARTMENT OF HEALTH AND ENVIRONMENT. MATERIAL EITHER STOCKPILED OR DISPOSED OF IN A FLOOD PLAIN WOULD REQUIRE A KANSAS STATE BOARD OF AGRICULTURE PERMIT. ANY MATERIAL DUMPED IN WATERS OF THE UNITED STATES OR WETLANDS IS SUBJECT TO U.S. CORPS OF ENGINEERS PERMITTING REGULATIONS. ANY MATERIAL BURIED OR STOCKPILED BEYOND APPROVED CONSTRUCTION LIMITS WOULD REQUIRE ADDITIONAL ARCHAEOLOGICAL INVESTIGATIONS UNLESS BURIED IN A PREVIOUSLY APPROVED BORROW LOCATION.
- ALL DISTURBED AREAS SHALL BE SEEDED AND MULCHED. SEEDING SHALL BE RYE GRASS AT A RATE OF 200 LBS PER ACRE.
- EXCESS EXCAVATION SHALL REMAIN ON SITE AND BE PLACED AS LOT FILL IN THE AREAS SHOWN ON THE EROSION CONTROL PLAN AND AS DIRECTED BY THE ENGINEER.

BENCHMARKS

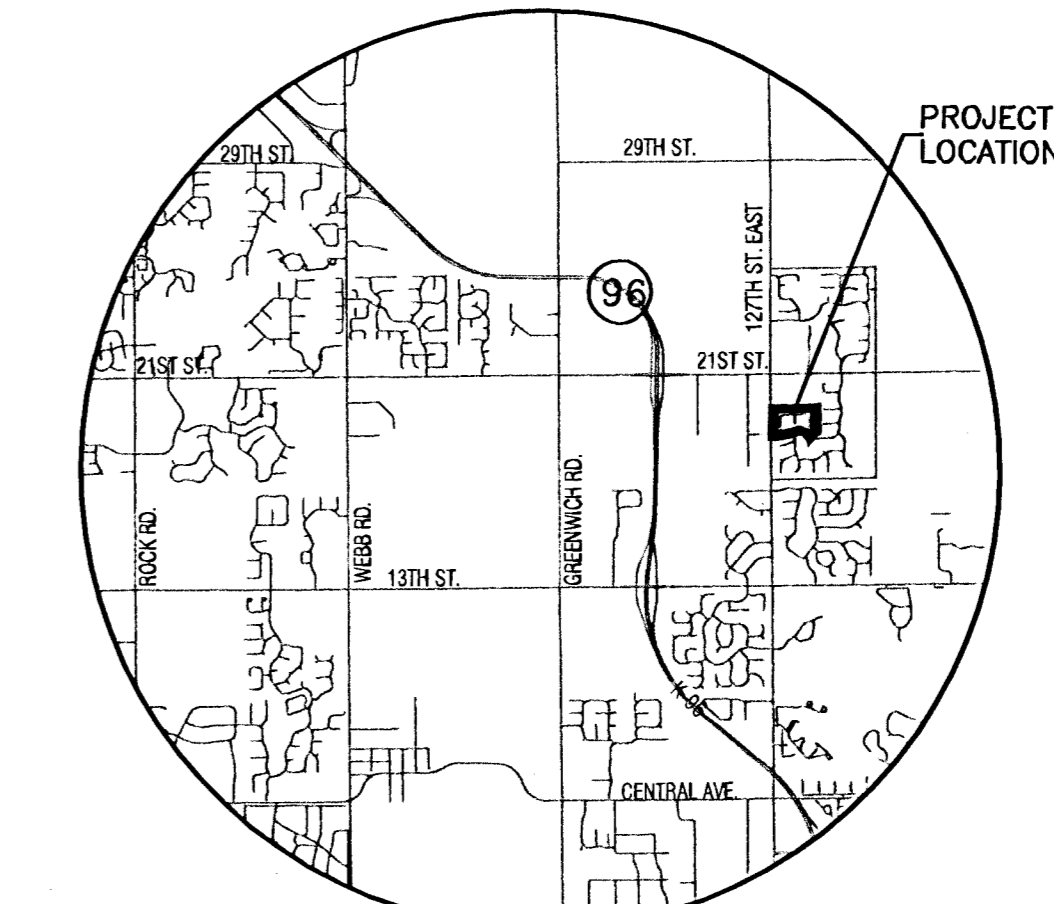
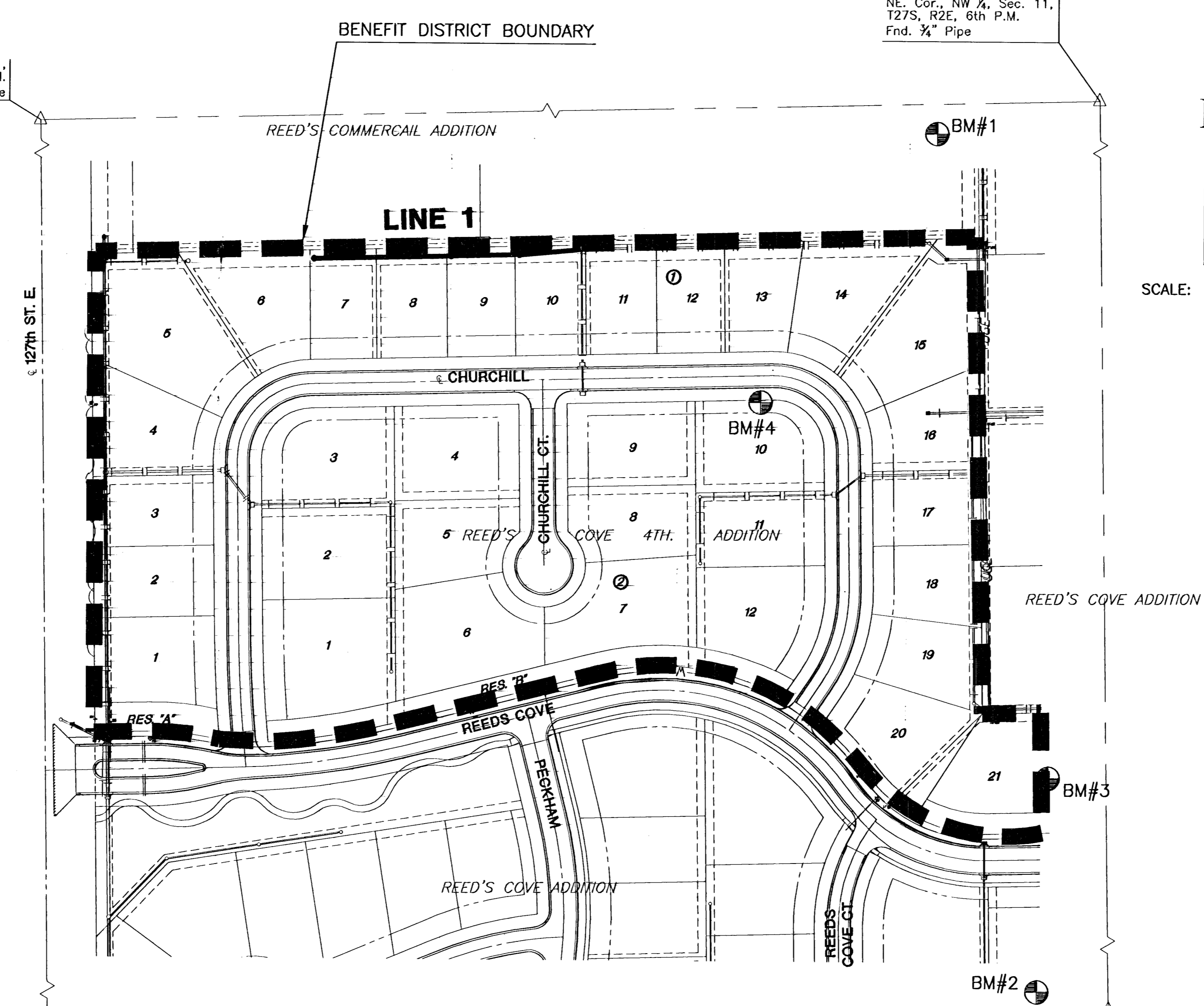
- BM 1 SQUARE CUT W. END OF S. HEADWALL OF RCB UNDER 21ST ST. N., 1506'+/- E. & 25' +/- S. OF NW COR SEC 11, T 27 S, R 2 E. ELEV.=1351.77
- BM 2 RR SPIKE IN N. FACE N. H-POLE, 4TH H-POLE EAST OF 127TH ST. EAST, 1940'+/- E. & 86'+/- NORTH OF W 1/4 COR SEC 11, T 27 S, R 2 E. ELEV.=1356.10
- BM 3 "T" POST 15'+/- N. & 15'+/- W. OF SE COR LOT 1 BLOCK 3, REED'S COVE. ELEV.=1354.30
- BM 4 "T" POST 10'+/- N. & 10'+/- W. OF SE COR LOT 1, BLOCK 1, REED'S COMMERCIAL (NE COR LOT 40, BLOCK 1, REED'S COVE). ELEV.=1363.37

SW. Cor., NW 1/4, Sec. 11, T27S, R2E, 6th P.M., Fnd. 3/4" Pipe in Thimble

NW. Cor., NW 1/4, Sec. 11, T27S, R2E, 6th P.M., Fnd. 3/4" Pipe in Thimble

NE. Cor., NW 1/4, Sec. 11, T27S, R2E, 6th P.M., Fnd. 3/4" Pipe

SE. Cor., NW 1/4, Sec. 11, T27S, R2E, 6th P.M., Fnd. Stone



LOCATION MAP

INDEX TO DRAWINGS

SHEET NO.	DESCRIPTION
1	TITLE SHEET
2	MANHOLE DETAILS
3	LINE 1 SWS
4	EASEMENT GRADING
5-8	BMP
9	BUBBLE MAP
10	FINAL PLAT

EARTHWORK SUMMARY

EXCAVATION	1400 C.Y.
LOOSE FILL	1400 C.Y.

MKEC
ENGINEERING
CONSULTANTS, INC.

411 N. WEBB ROAD
WICHITA, KS. 67206
316-684-9600

SCOTT R. ARMOUR
REGISTERED PROFESSIONAL ENGINEER
KANSAS
8/22/06

PAVING STREETS AND INCIDENTAL DRAINAGE
REEDS COVE FOURTH ADDITION
PHASE 2

TITLE SHEET
SHEET TITLE
472-84384
PROJECT NUMBER

SRS / DM / GJA
DESIGNED DRAWN CHECKED

ISSUED
August 2006

REVISED

SHEET NO.
1 of 10

PLOTTED: Tuesday, August 22, 2006 @ 08:17AM

H:\CIVIL\021214TH ADDITION\PAV\PHASE 2_PAV\0210101.DWG