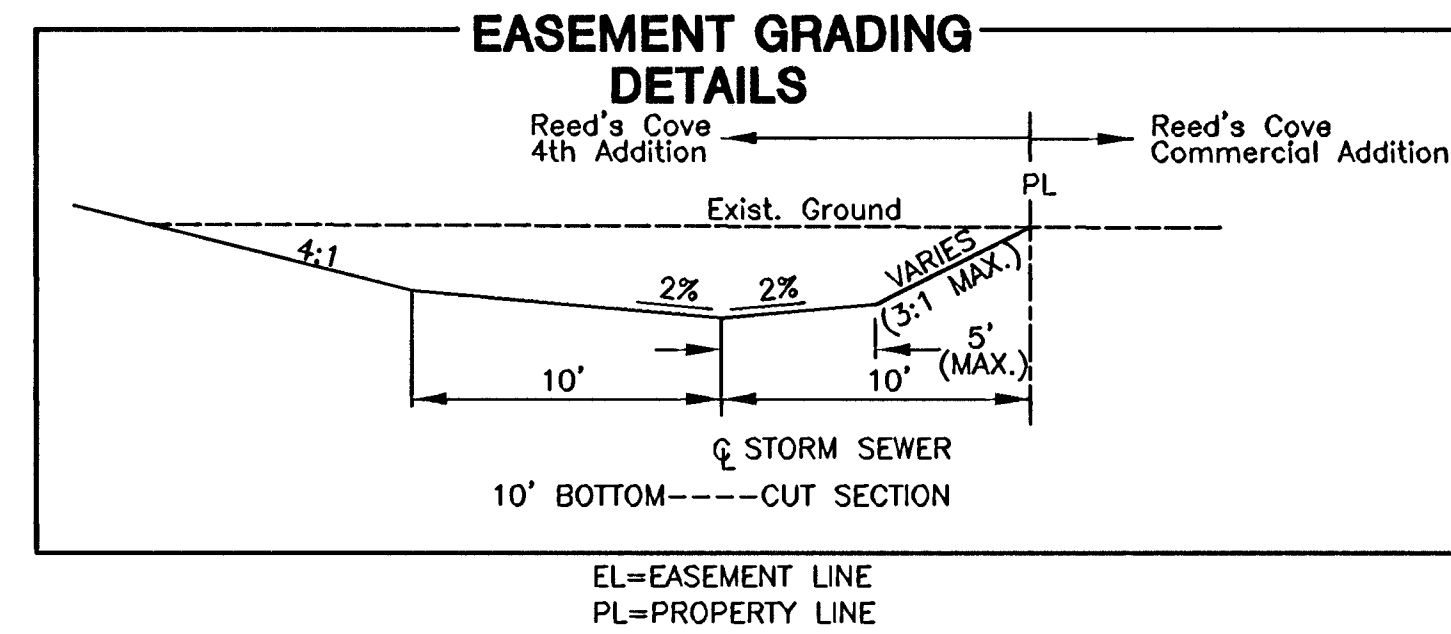
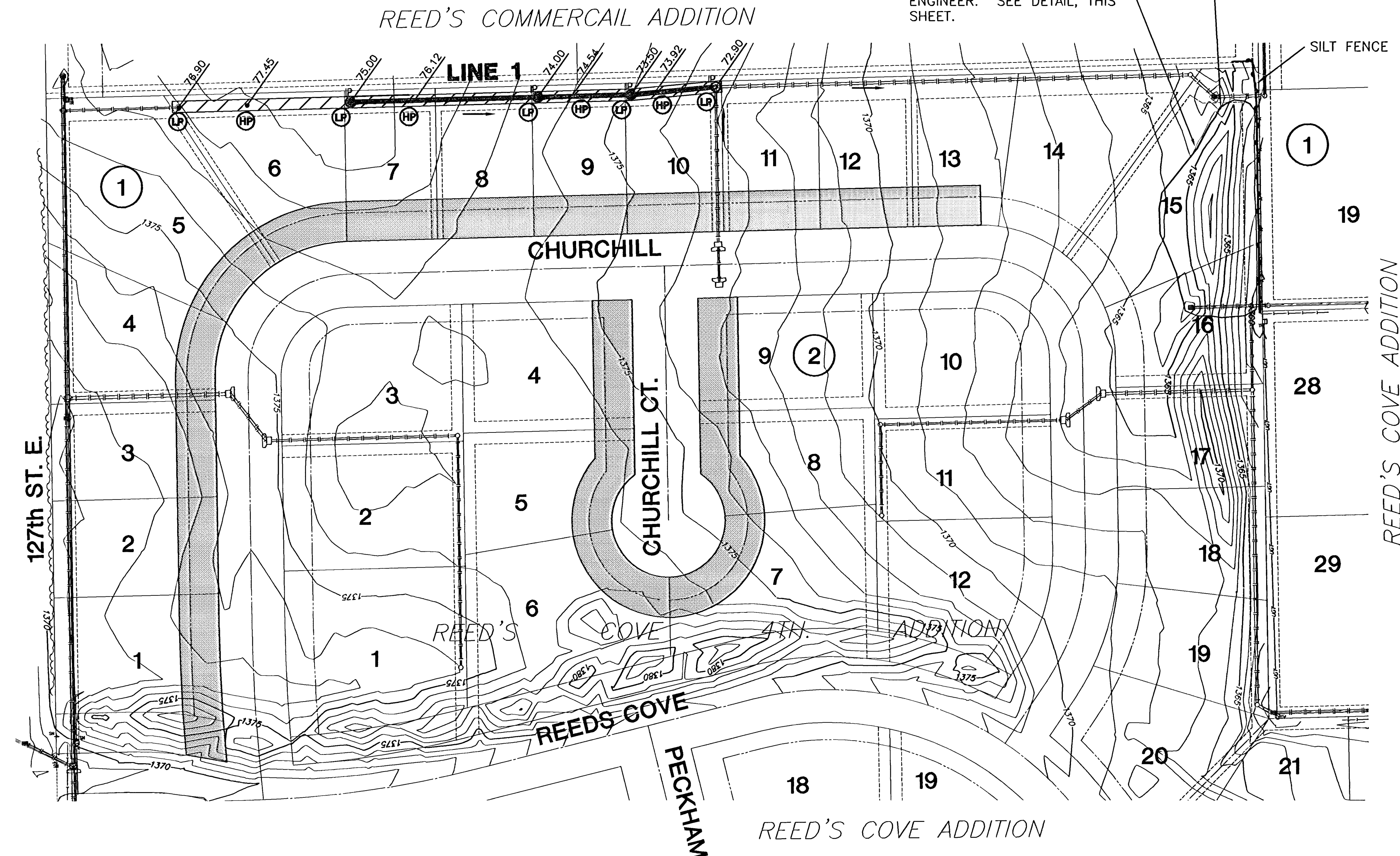


NOTE:
EXISTING BERM AND EXCESS EXCAVATION FROM
EASEMENT GRADING SHALL BE USED TO
CONSTRUCT LOT FILLS IN LOCATIONS SHOWN AND
AS DIRECTED BY THE ENGINEER. ALL EXCAVATION
SHALL REMAIN ON SITE AND BE WASTED ON LOTS.

CONTRACTOR SHALL EXCAVATE
EXISTING BERM AND PLACE AS
LOT FILL AS DIRECTED BY
ENGINEER. SEE DETAIL, THIS
SHEET.



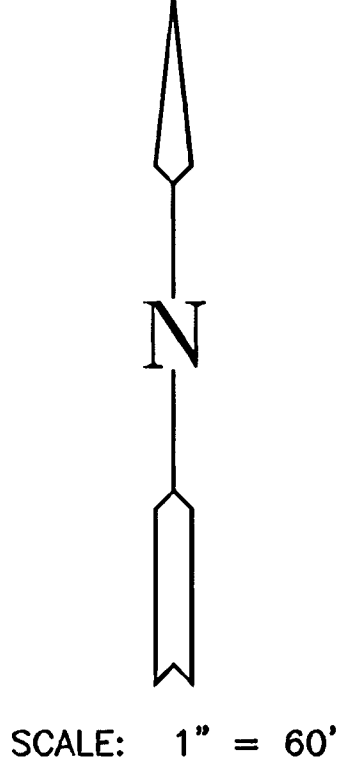
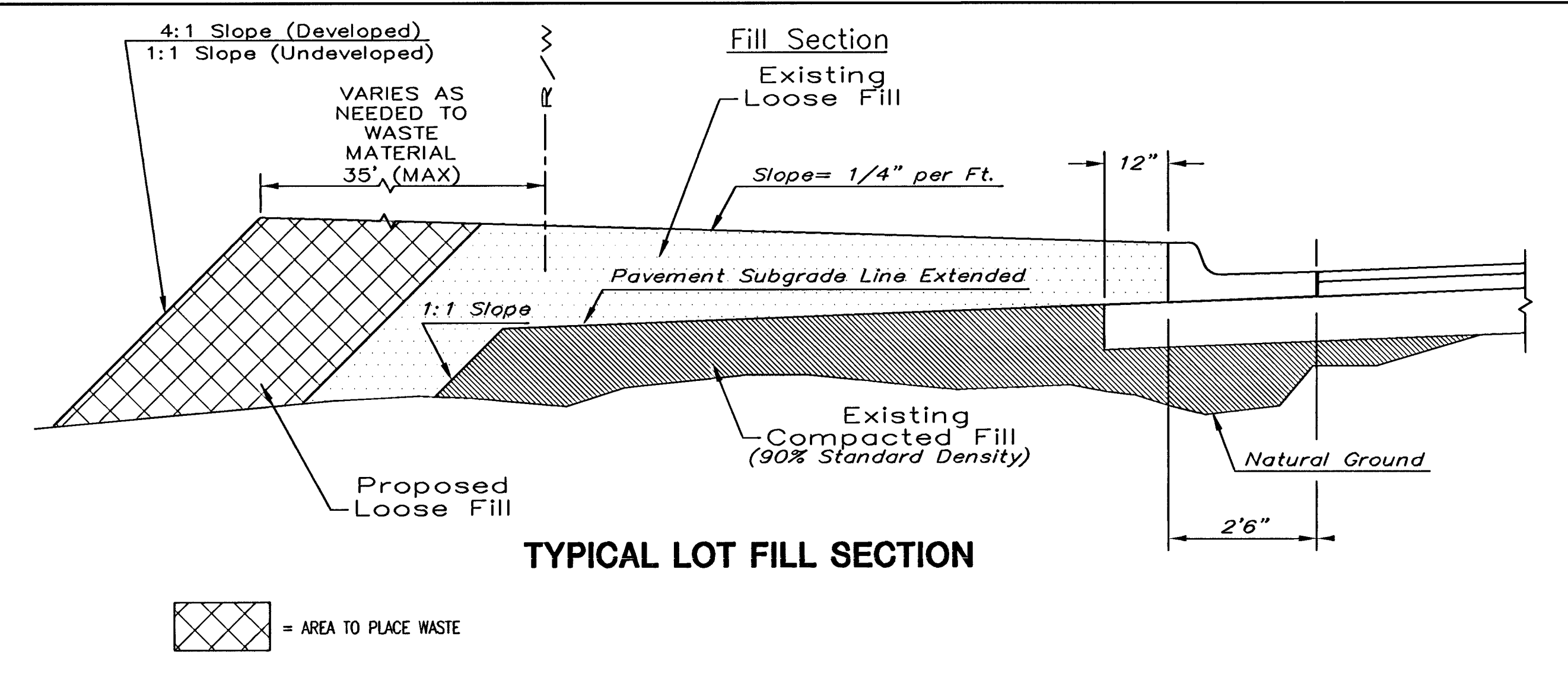
EASEMENT GRADING DETAILS

- = AREAS TO BE GRADED (AREA SHOWN REPRESENTS DITCH BOTTOM)
- = PROPOSED FILL AREA
- = LOCATION FOR SEDIMENT CONTROL
- = LOCATION OF INLET SEDIMENT CONTROL
- = CURB INLET FILTER
- H.P. = HIGH POINT
- L.P. = LOW POINT
- M.E. = MATCH EXISTING
- 55.5 X = GRADE BREAK ELEVATION
- 38.1 = LOT CORNER ELEVATION
- 2% = PERCENT GRADING
- = AREA INLET PROTECTION
- = SILT FENCE
- = CURB INLET PROTECTION
- 1.300 = EXISTING CONTOUR

**Graded widths and slopes may vary as approved by the Engineer to minimize conflict with existing trees.

Easement Grading and berm excavation will be bid on a lump sum basis for grading the easements to the profile and elevations shown on the Easement Grading Plan (this sheet). Approximate quantities of earthwork for easement grading and berm excavation are shown below. These approximate quantities are given for information only. The Contractor should verify the quantities when preparing the proposal.

Cut 1400 C.Y. (Approximate)
Fill 0 C.Y. (Approximate)



PAVING STREETS AND INCIDENTAL DRAINAGE
REEDS COVE FOURTH ADDITION
PHASE 2

EASEMENT GRADING
SHEET TITLE
472-84384
PROJECT NUMBER

DESIGN BY SRS
DRAWN BY DM
CHECKED BY GJA

ISSUED August 2006
REVISED

SHEET NO.
4 of 10

PLOTTED: Sunday, August 22, 2005 @ 09:24AM

H:\CVL\02121\4TH-ADDITION\PAV\PHASE 2 PAV\02121EG.DWG